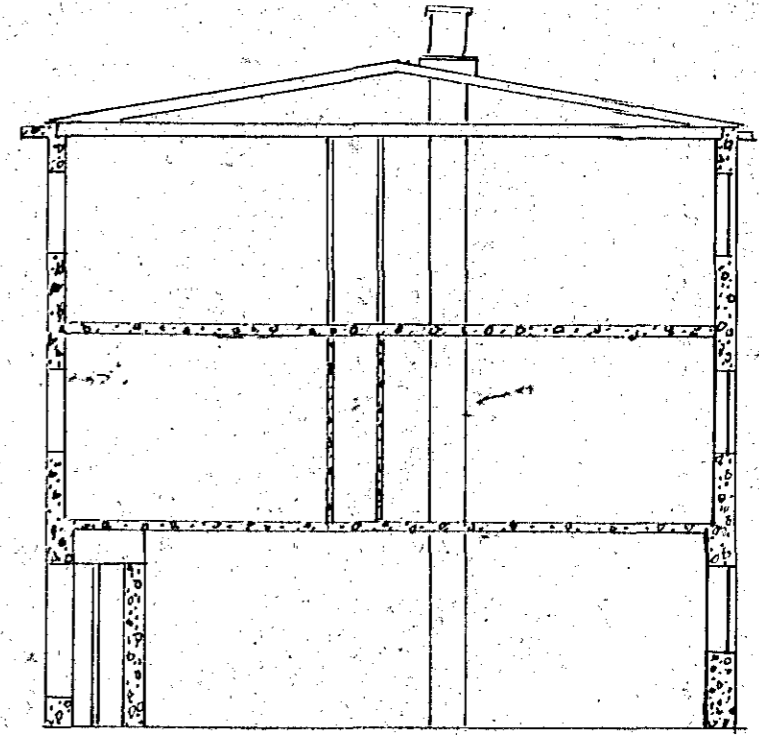
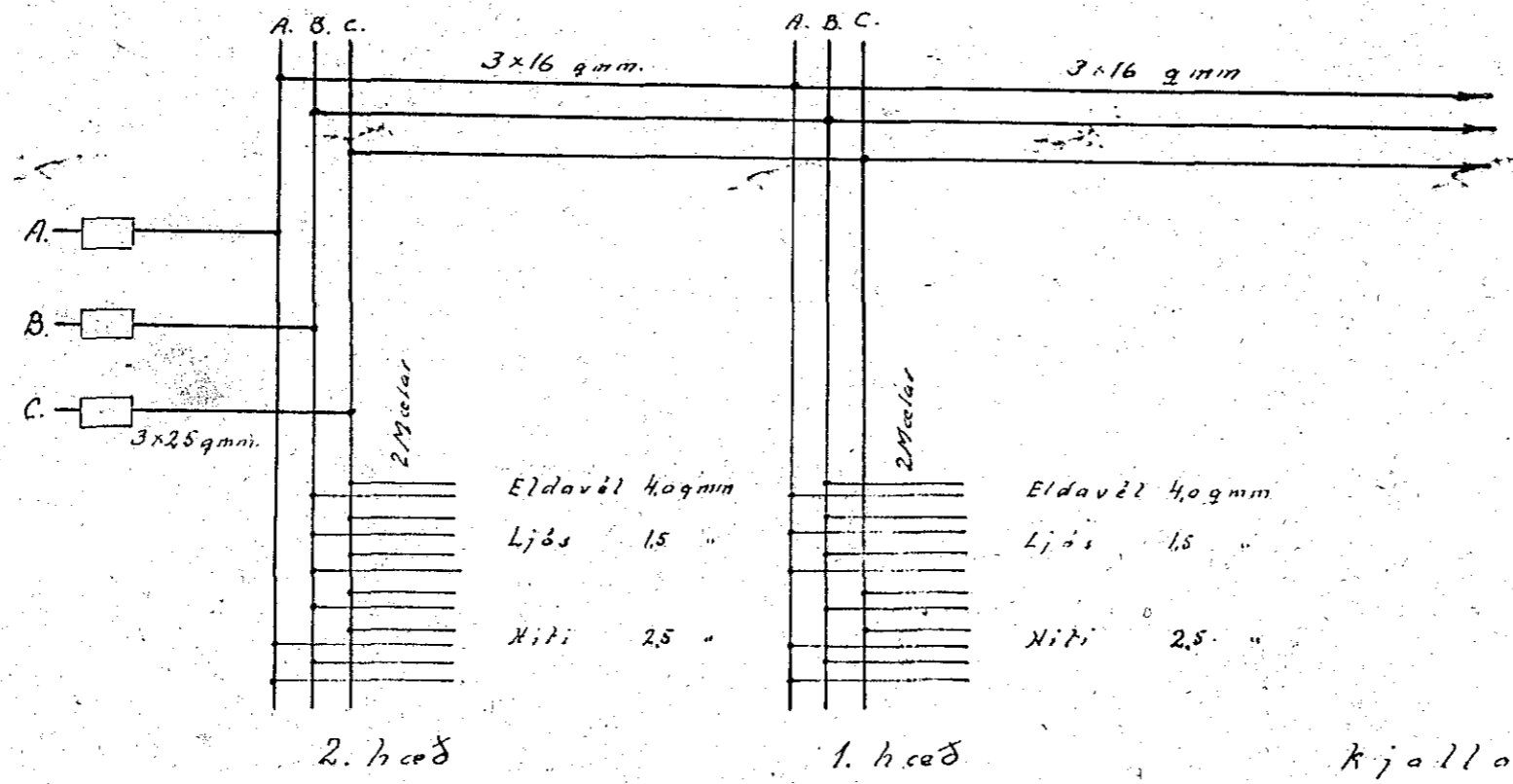


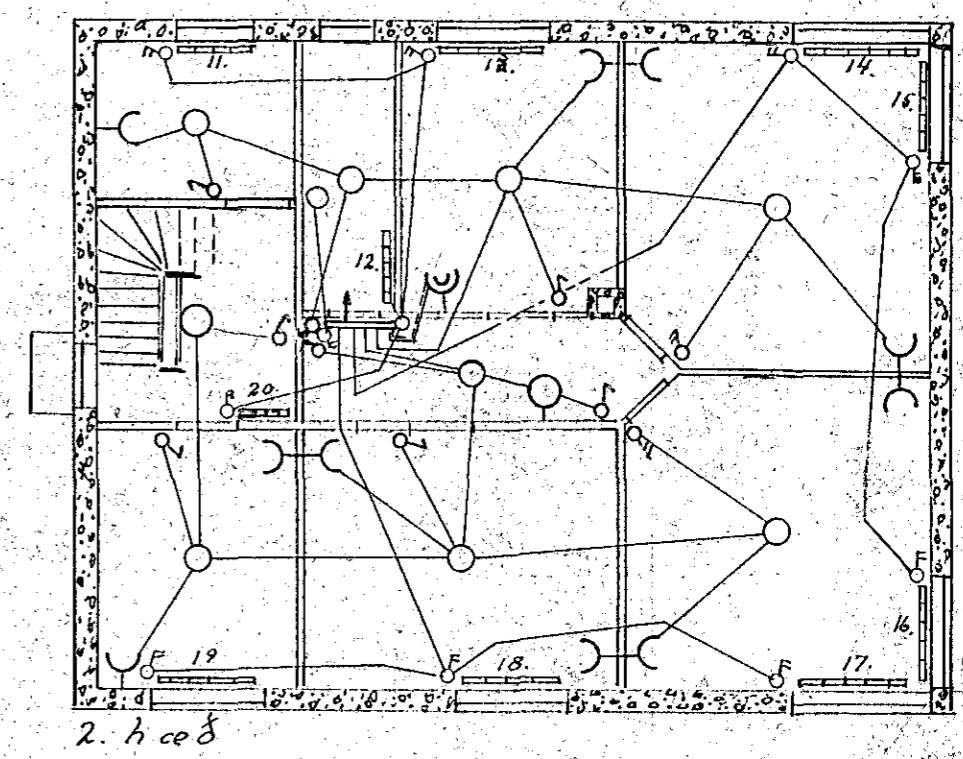
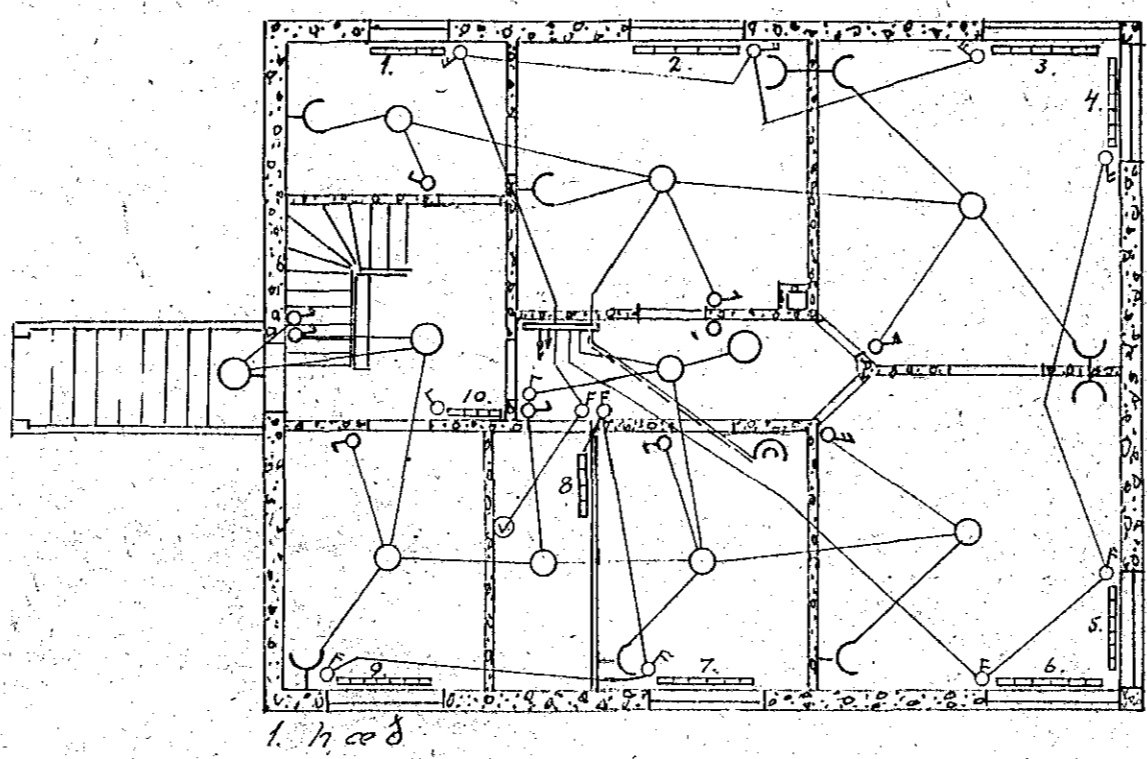
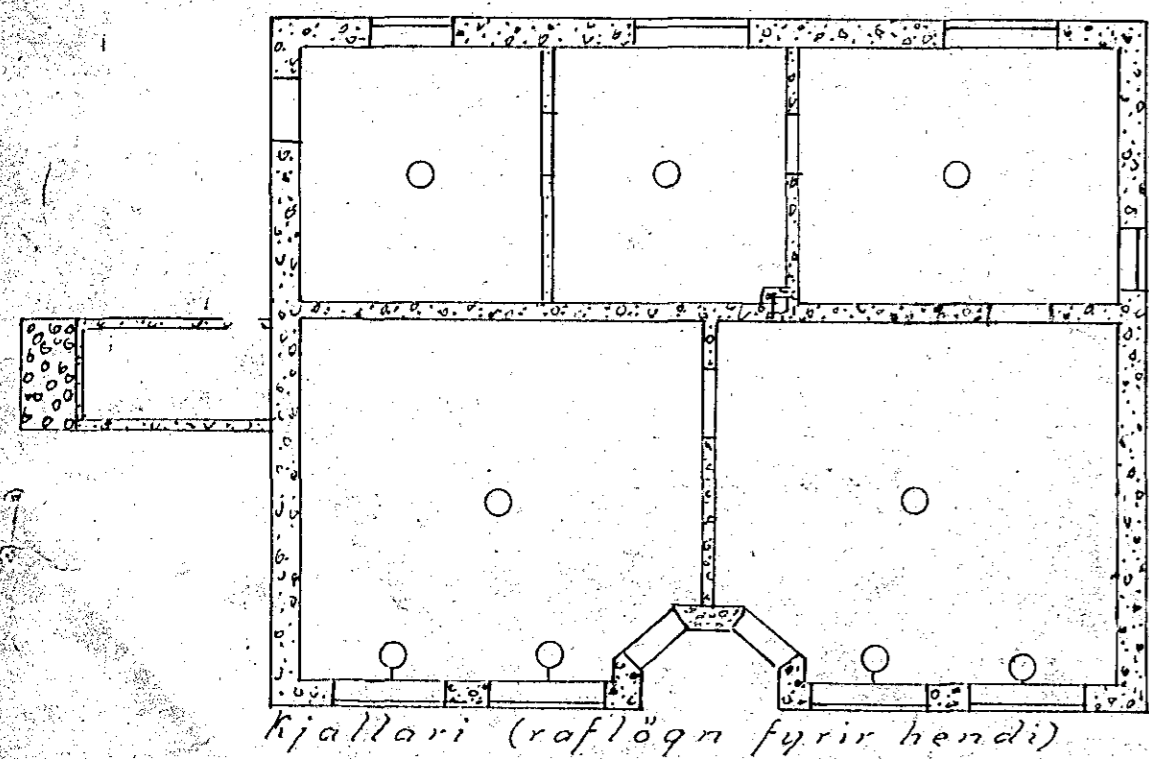
Raflögn í húsið Lækjargötu nr 10.

Stærðir ofna:

Nr.	Wött	Nr.	Wött
1.	700	15	900
2.	1200	16	900
3.	900	17	900
4.	900	18	1200
5.	900	19	1000
6.	900	20	200
7.	700	21	
8.	700	22	
9.	1000	23	
10.	200	24	
11.	700	25	
12.	700	26	
13.	900	27	
14.	900	28	



Mkr. 1:100



256

Hafnarfirði 8. júlí 1942.

V. Thoroddsen.

256