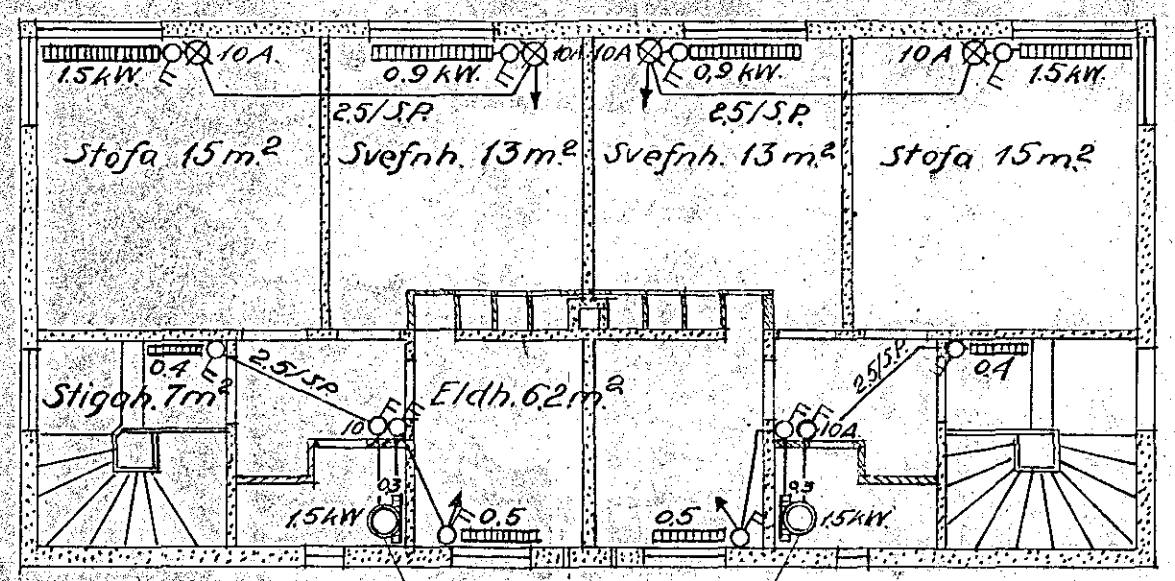


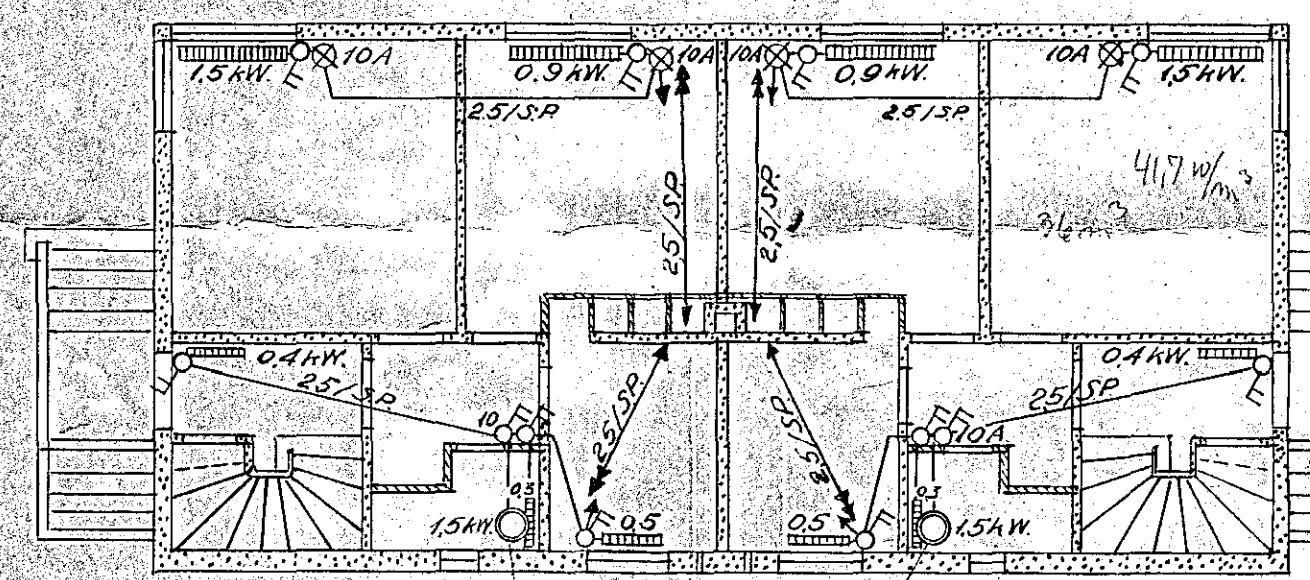
Skúlaskeið 22-40

Húsv: m. 617, 723, og 749 m. 754.

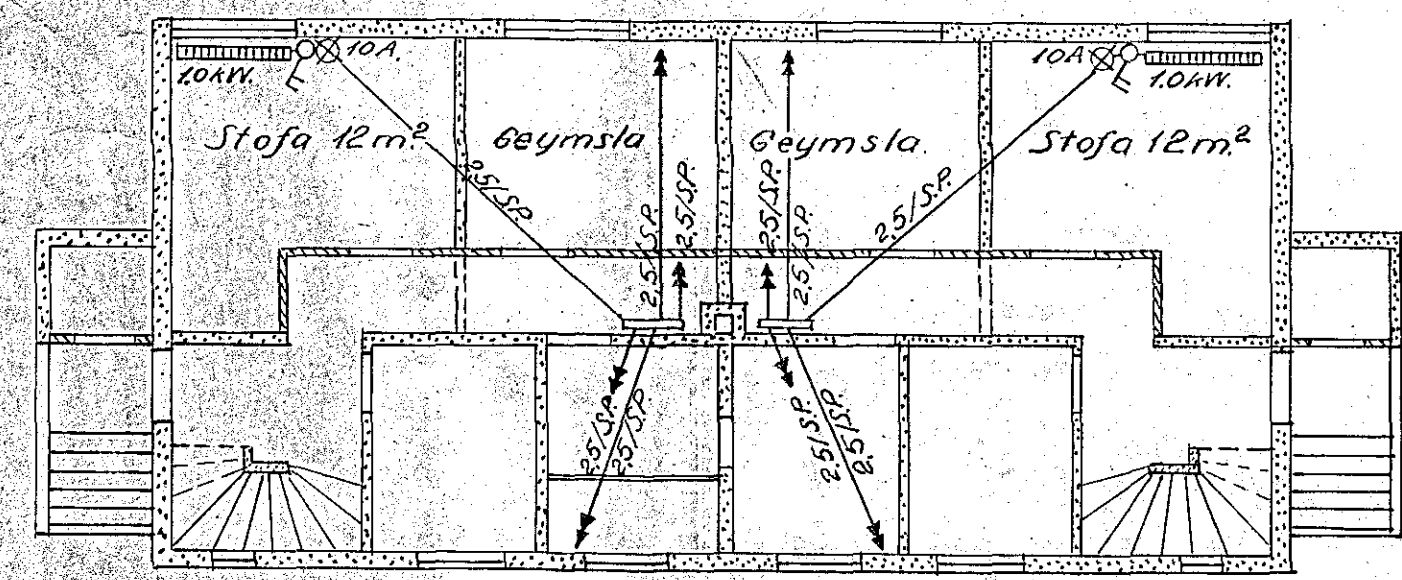
Verkamannabústaðir.
Mælikvarði 1:100.



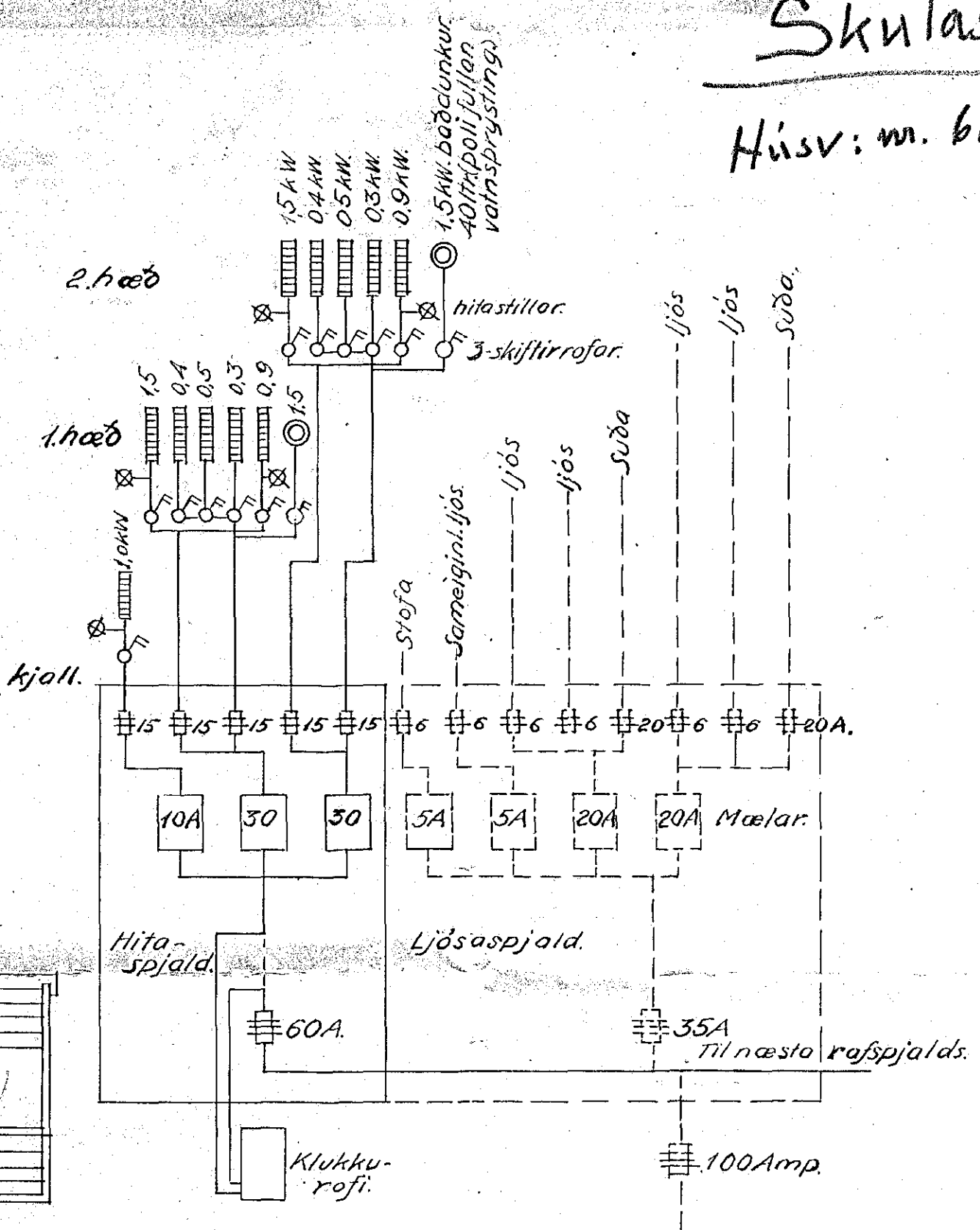
2.hæð
40ltr. dunkar 15kW m/hitastillum (polifullan vatnsprýst.)



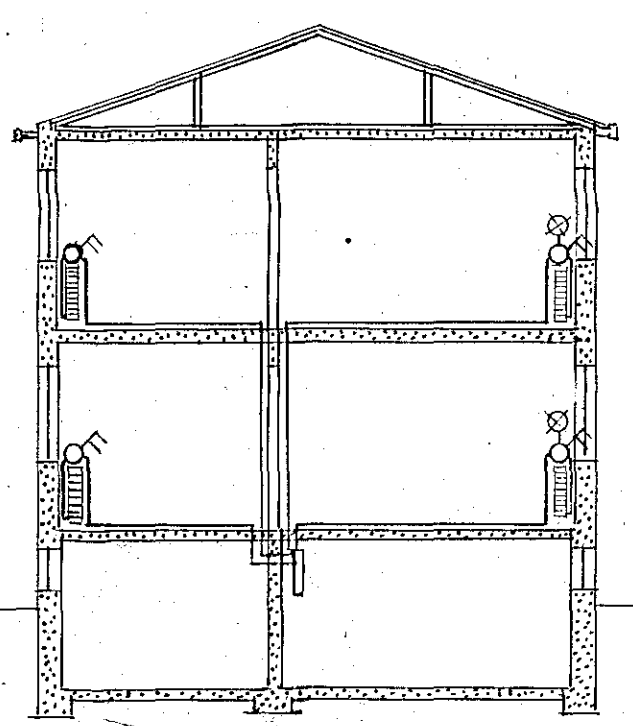
1.hæð
40ltr. dunkar 15kW m/hitastillum (polifullan vatnsprýst.)



Kjallari



Tengimynd af rafspjaldi.



Skurður.

Tafla yfir þilofna:

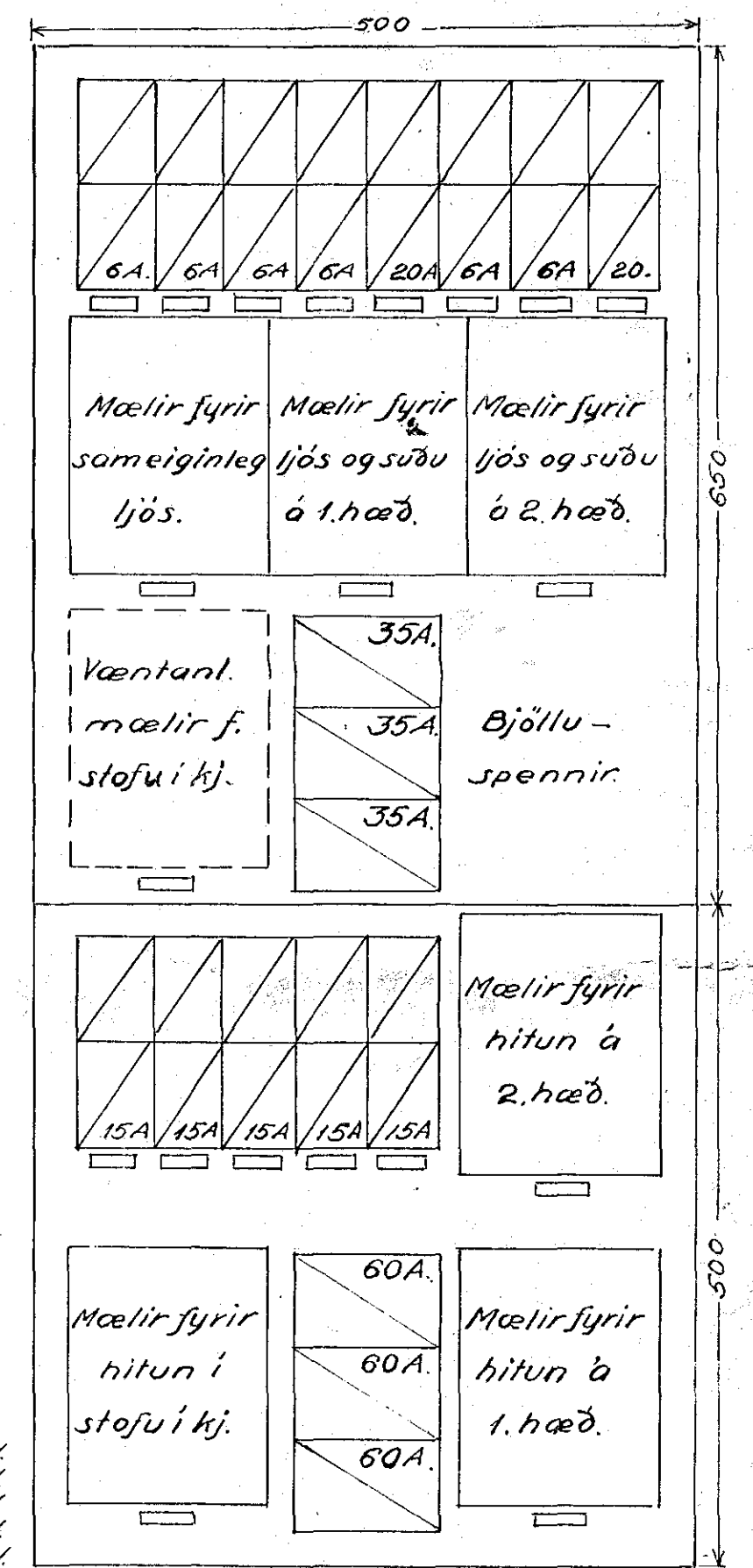
4	stk.	1.5 kW	staerð 1400 x 700 mm.	2stk.H. 2stk.V.
2	"	1.0	1120 x 625	1stk.H. 1stk.V.
4	"	0.9	1260 x 500	2stk.H. 2stk.V.
4	"	0.5	700 x 500	2stk.H. 2stk.V.
4	"	0.4	-	2stk.H. 2stk.V.
4	"	0.3	-	2stk.H. 2stk.V.

Alls 22 ofnar samtals 16.4 kW.

Ofnar skulu hvergi vera nær glugga og gólflistum en 25cm.

Hæð rofa frá gólfi: 90 cm (nema rofar baðherblagna þeir skulu vera í 190 cm. hæð.)

Hæð hitastilla frá gólfi: 150 cm.



Rafspjald (alls 2 stk.)

Klukkurofi.