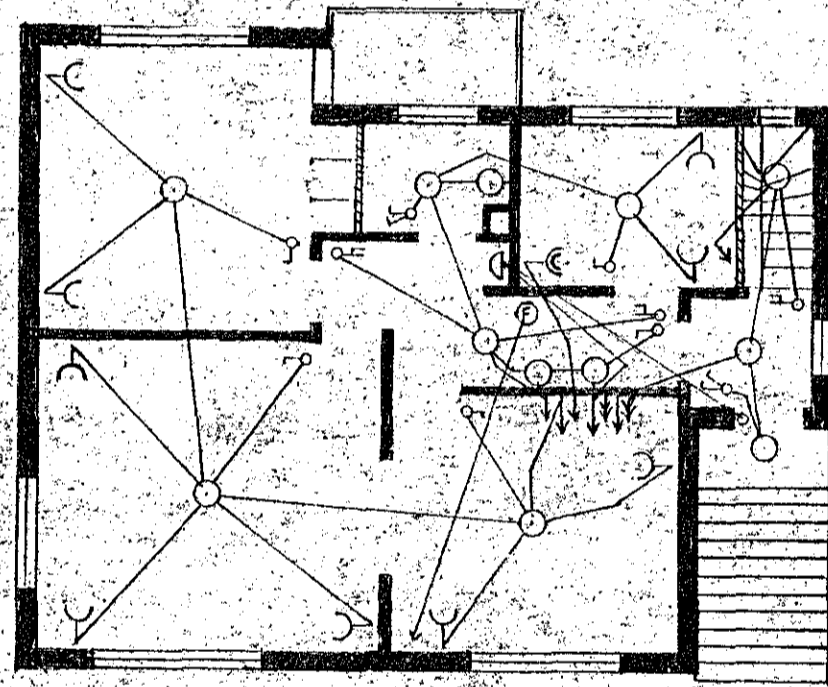
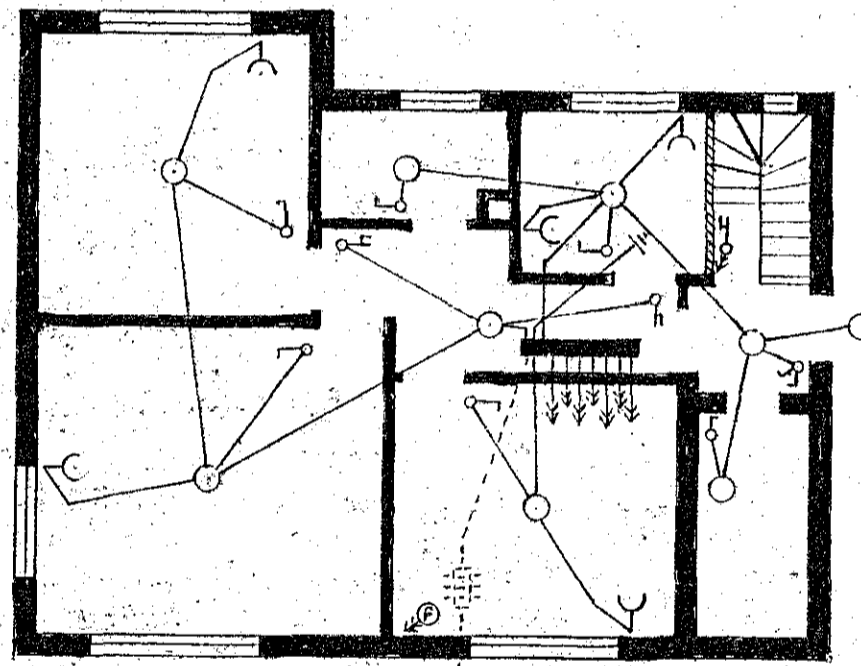


Rafhlögn í húsi Jóns Egilssonar.
 Ölduplöð 10.
 við ~~Konungsgötu~~ Hafnarfirði

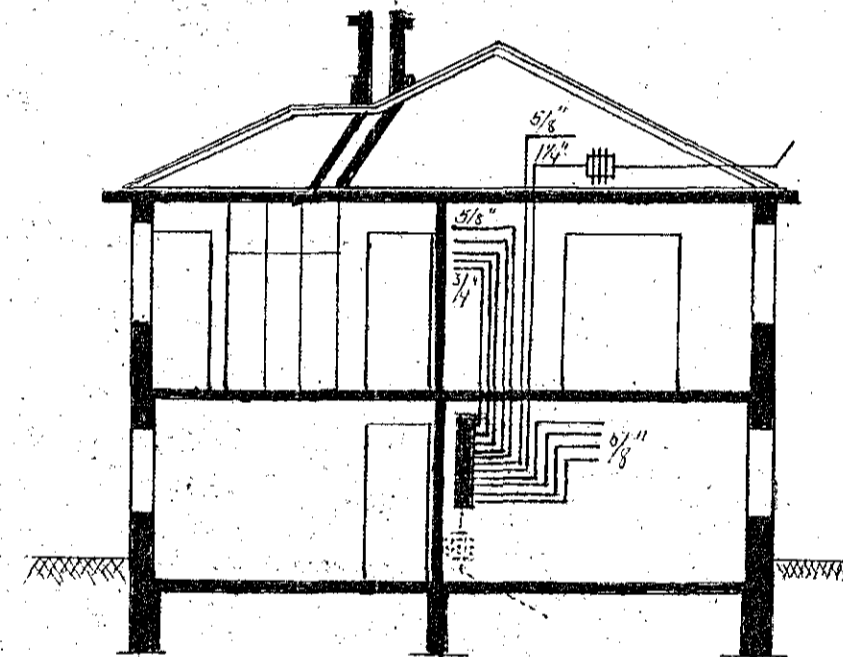
H.905. T.137
 Samp. - 15. - 8. - 1946.



1. hæð.



Kjallari.



Skurður.

Höfðliharra
 1-pipa 1/4"
 1-11-3/4"
 9-11-5/8"

MKV1:100 9/8 7.
 Hafnarfirði 31-7-1946.
 Guðm. Þórðarson.
 137/B