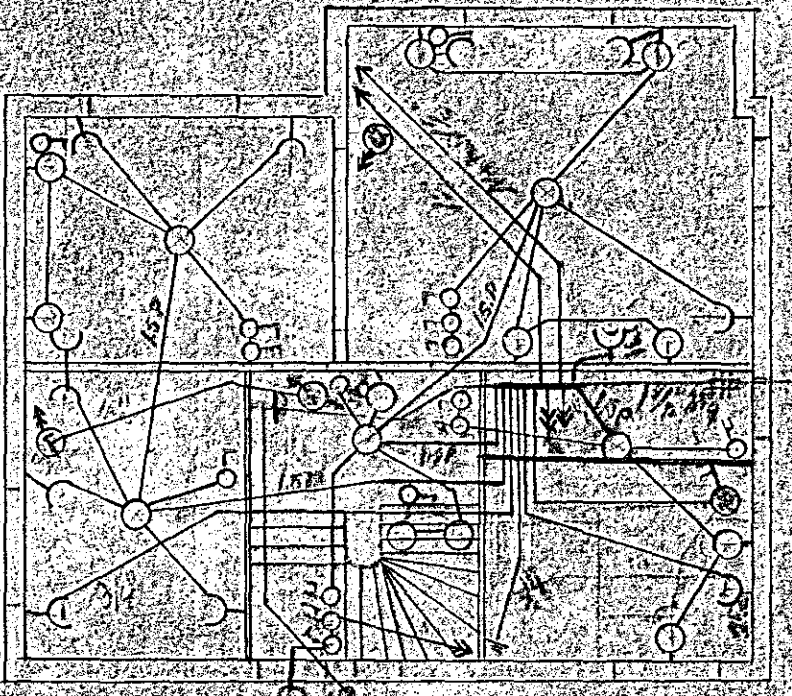
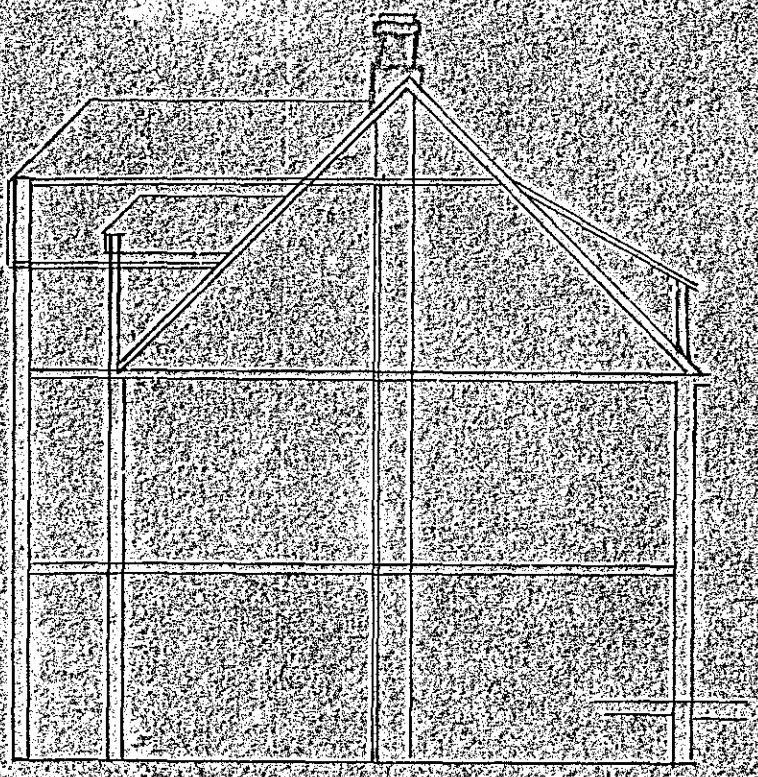
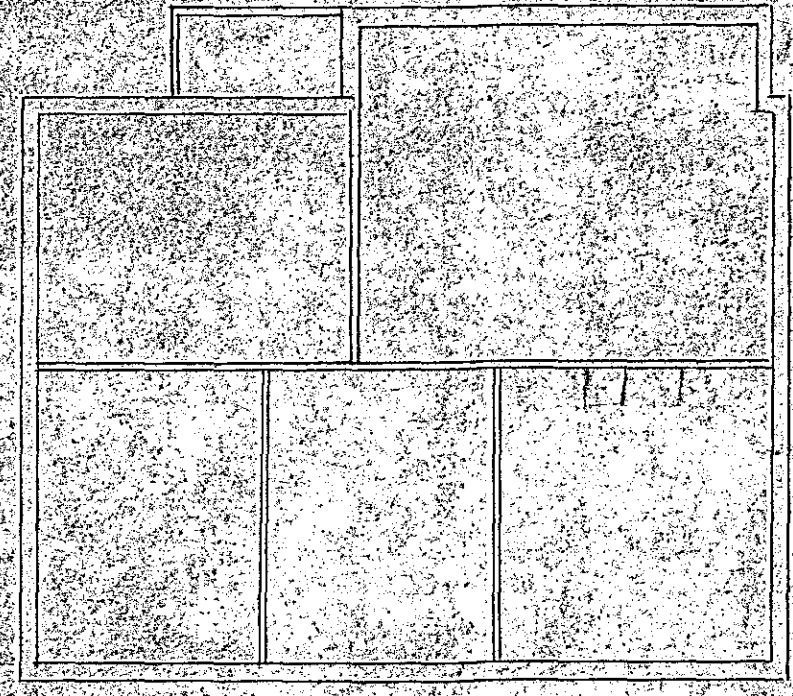


Samp 30 Jun 1948
NB. gera verður ráð fyrir loft-
lína málaki þar sem að
jardstremur milli fyrir hend.



Hjallarni



Hæð



Ríshæð

Reiðlög i- hús
Egidmundar Sveinssonar
við Hamarsbrúni nr 8
13/12. 47 Egidmundar