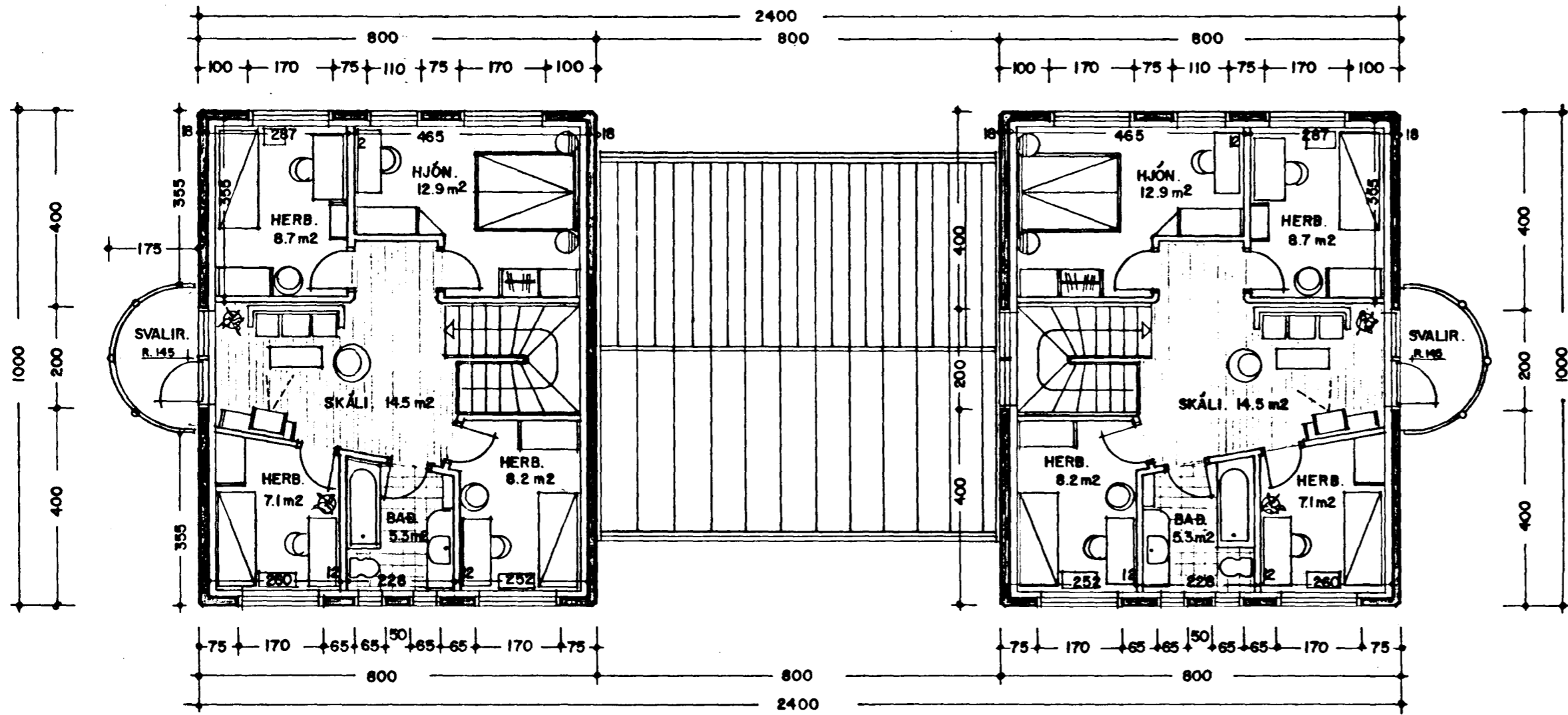
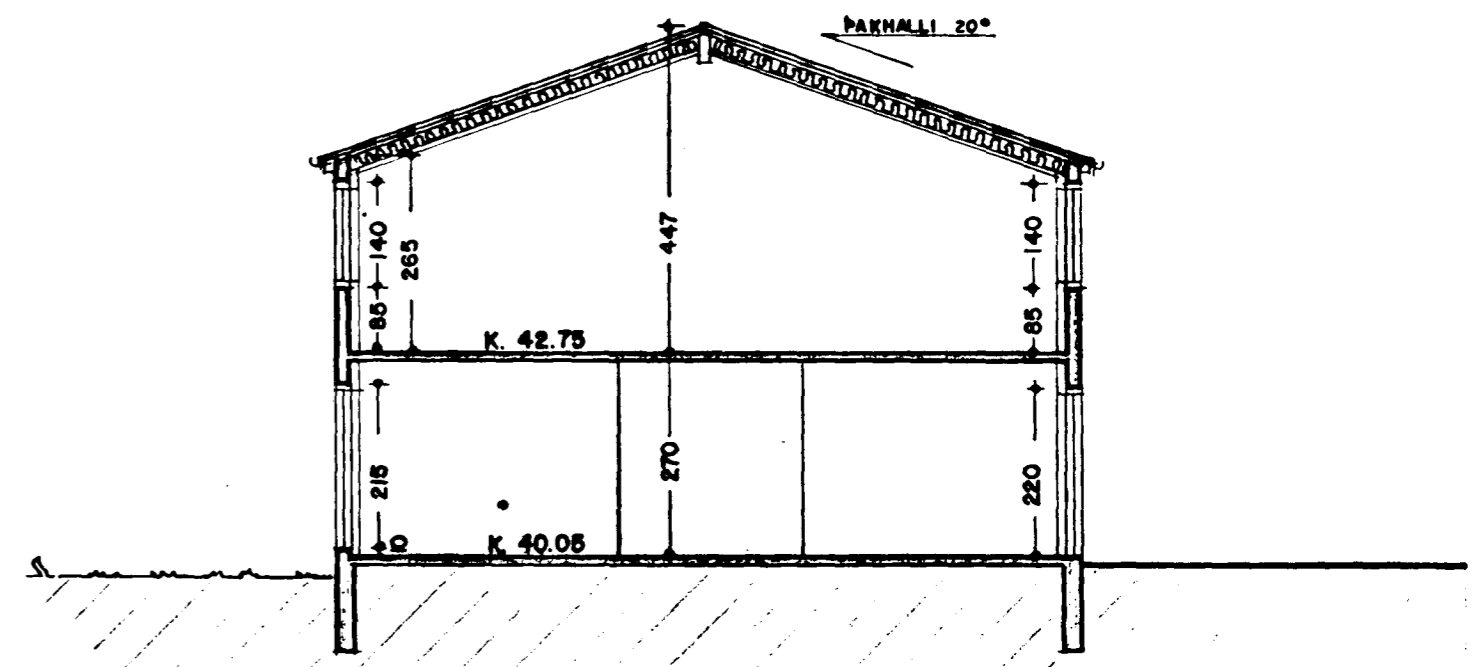


Samykkt á fundi bygginga-  
nefndar þ. 18.10.1995

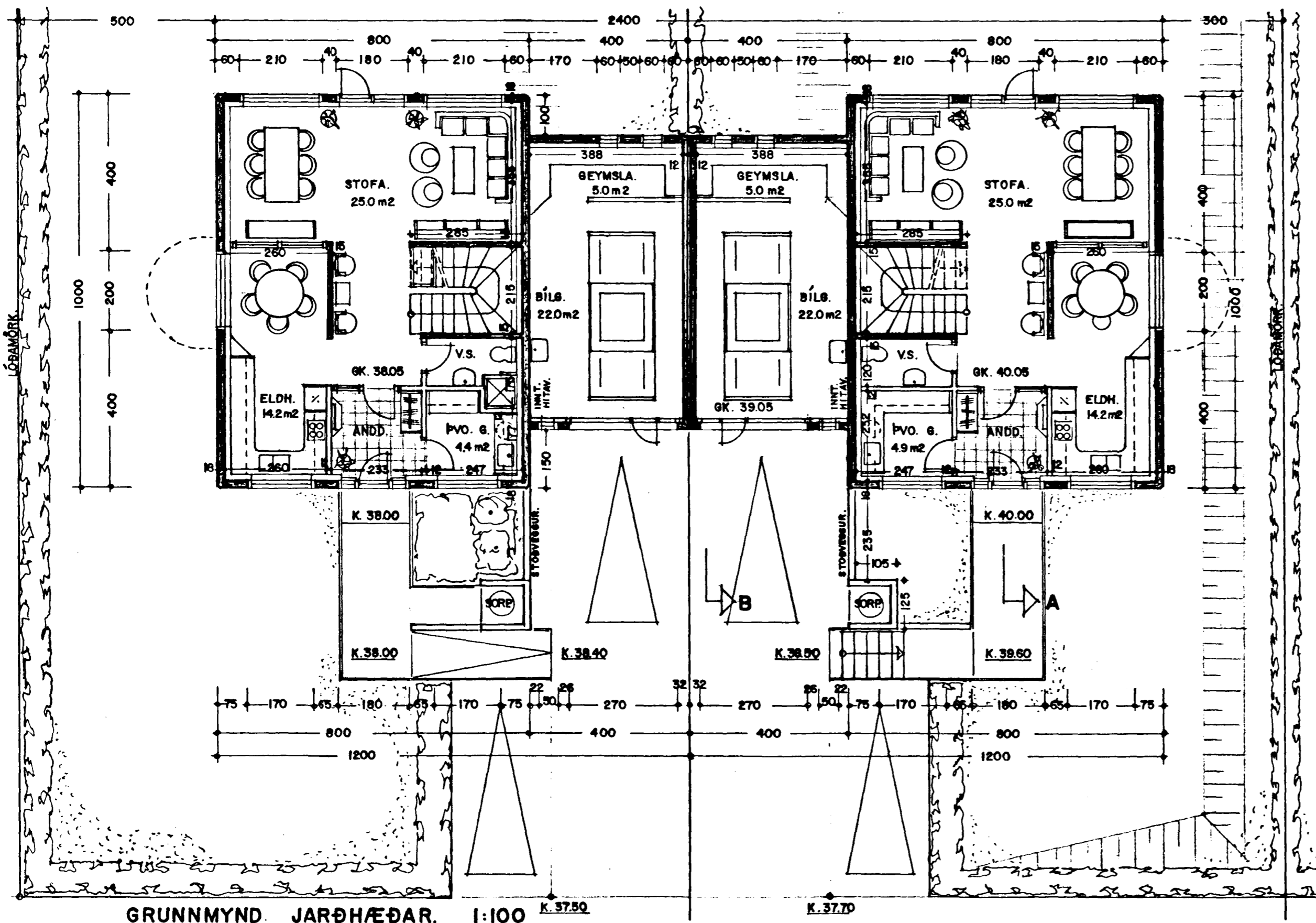
BYGGINGAFULLTRÚINN  
A/H HAFNARFIRÐI  
*Þristein Þóro*



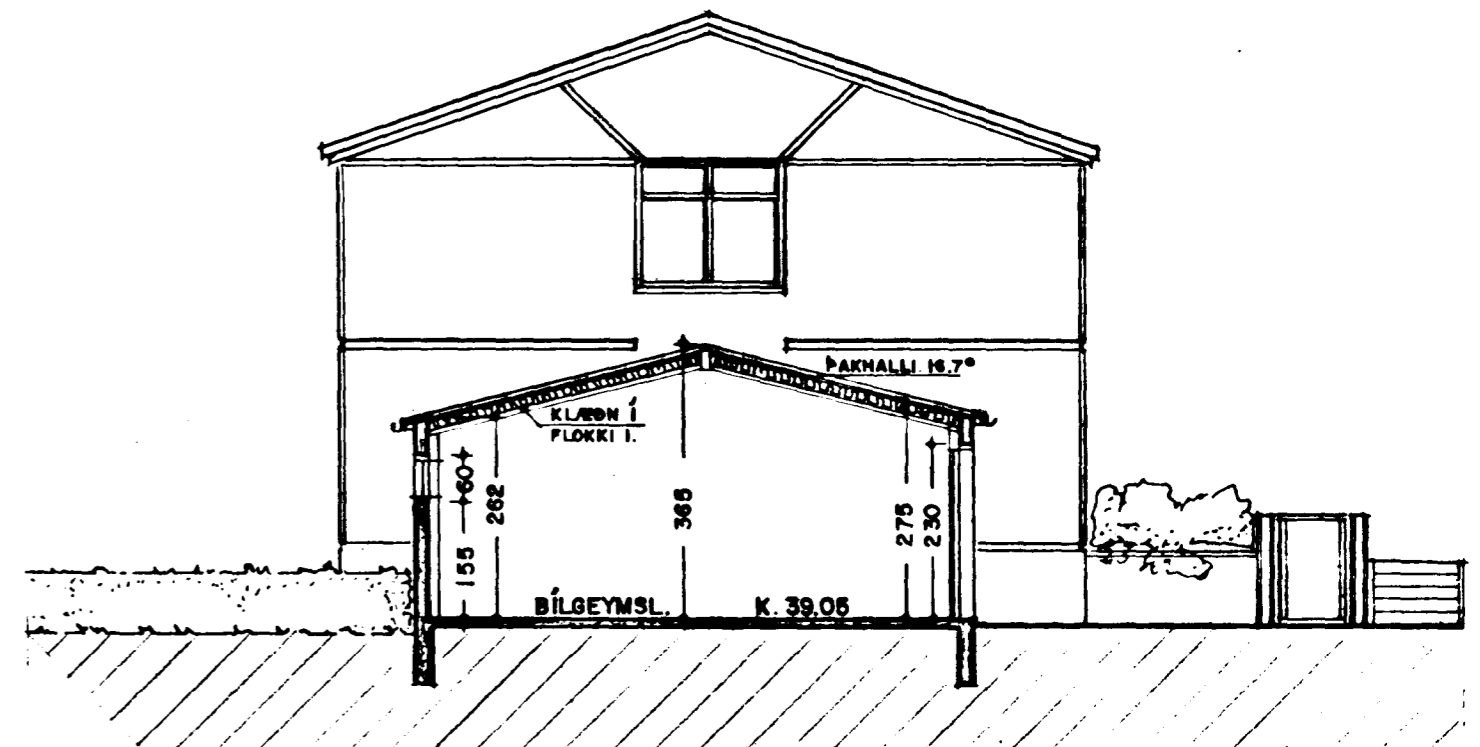
GRUNNMYND 2. HÆÐ. 1:100



SNEIÐING. A-A 1:100



GRUNNMYND. JARÐHÆÐAR. 1:100



SNEIÐING. B-B. 1:100 AUSTURHLIÐ.

STÆRÐIR:

HÚS NR. 17

1. HÆÐ.	80.0 m <sup>2</sup>	216 m <sup>3</sup>
2. HÆÐ.	80.0 m <sup>2</sup>	285 m <sup>3</sup>
BÍLGEYMSLA	30.0 m <sup>2</sup>	95 m <sup>3</sup>
SAMTALS =	190.0 m <sup>2</sup>	596 m <sup>3</sup>

HÚS NR. 19

1. HÆÐ.	80.0 m <sup>2</sup>	216 m <sup>3</sup>
2. HÆÐ.	80.0 m <sup>2</sup>	285 m <sup>3</sup>
BÍLGEYMSLA	30.0 m <sup>2</sup>	95 m <sup>3</sup>
SAMTALS =	190.0 m <sup>2</sup>	596 m <sup>3</sup>

EFSTAHLIÐ 17-19 HAFNARFIRÐI.

VERK NR. 145  
TEIKN. NR. 02

ÞAG. 28.-9.-1995 MÁL. 1:100  
BREYTT. 12.-10.-1995

JON GUÐMUNDSSON ARKITEKT  
VINNUSTOFA: SKÚLAGÖTU 61 a. REYKJAVÍK. Sími. 562-5055