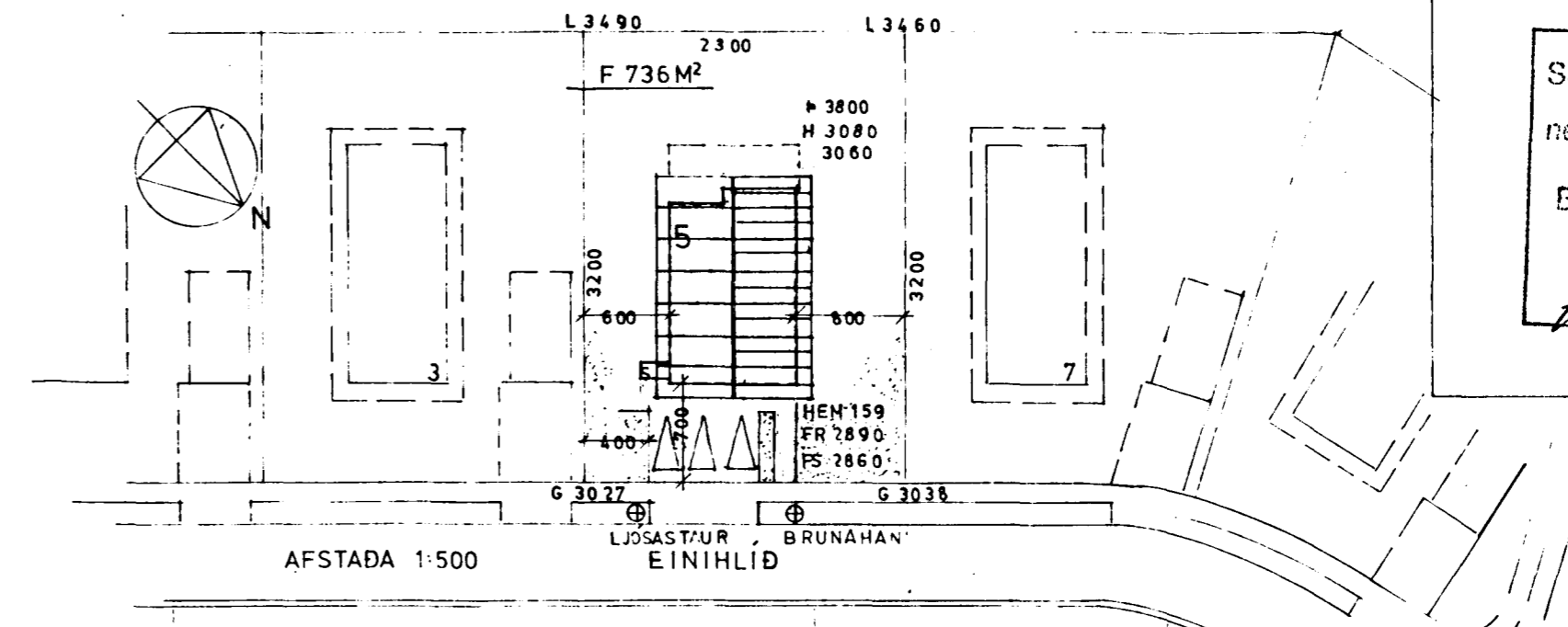


EFRI HÆÐ M. 1:100



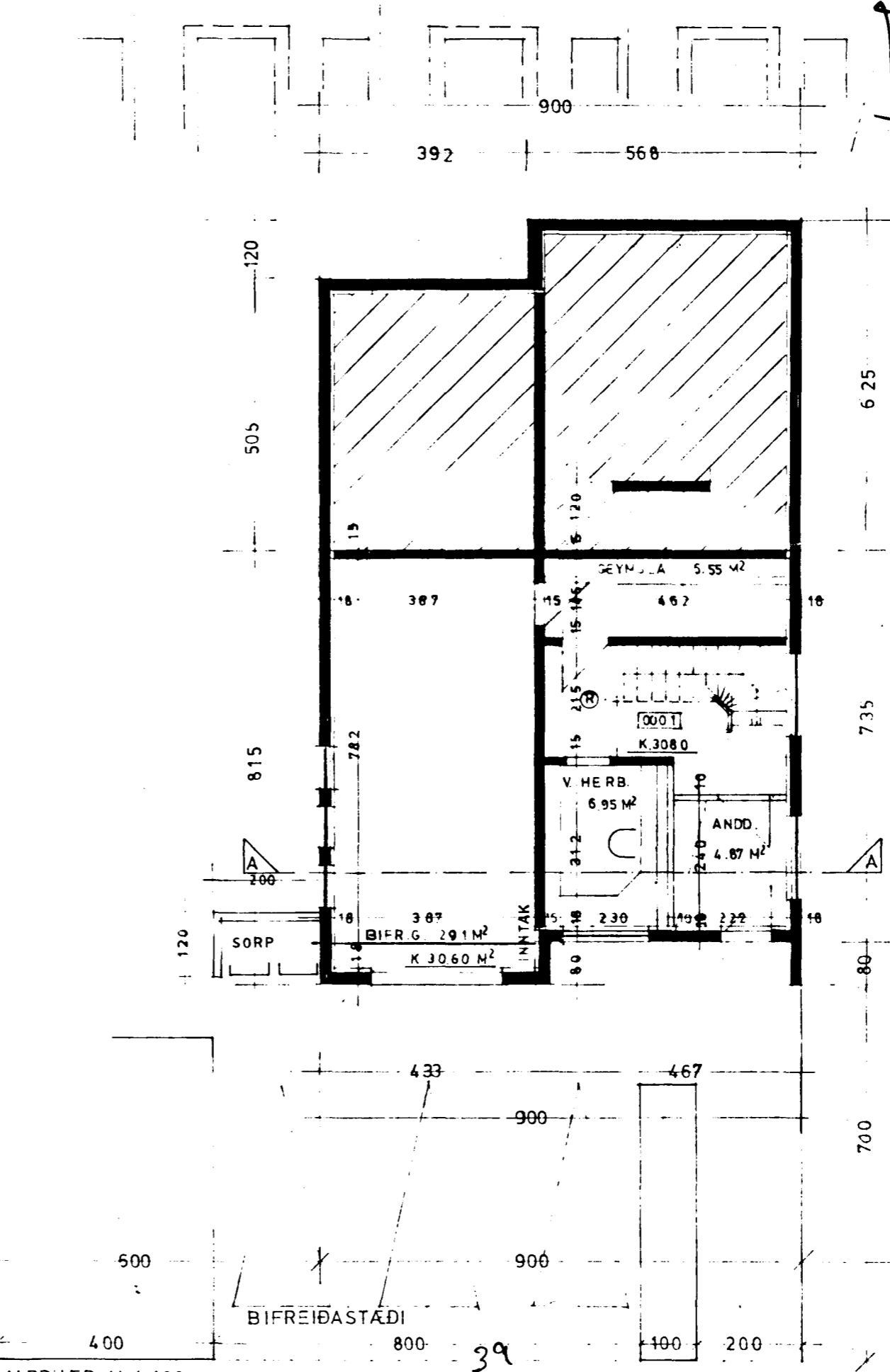
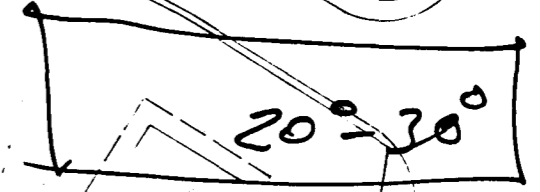
AFSTADA 1:500

Samþykkt á fundi bygginga-
nefndar þ. 26.11.1995
BYGGINGAFULLTRÚINN
Í HAFNARFIRDI
Kristján Þórunn

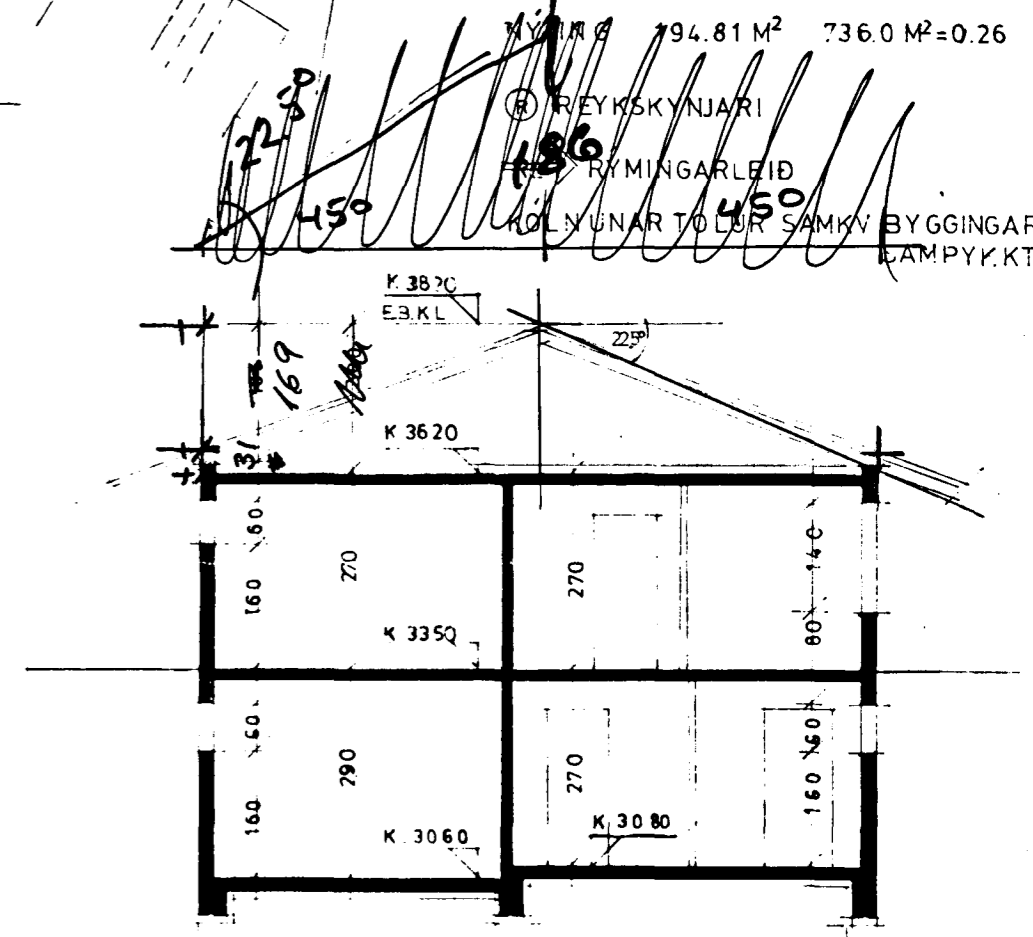
EINIHLÍÐ 5

FLATARMÁL	
JARÐHÆÐ	69.61 M ²
EFRI HÆÐ	124.90 M ²
SAMT.	194.81 M ²

RÚMMÁL	
JARÐHÆÐ	193.95 M ³
EFRI HÆÐ	337.23 M ³
RIS	115.53 M ³
SAMT.	646.71 M ³



JARÐHÆÐ M. 1:100



SNID A-A M. 1:100

1. hæð
 $0.8 \times 4.33 = 3.46$
 $7.35 \times 4.125 = 30.32$
 $7.35 \times 4.875 = 35.83$
 $33.78 \text{ m}^2 \times 2.9 = 97.96 \text{ m}^3$
 $35.83 \text{ m}^2 \times 2.7 = 96.74 \text{ m}^3$
69.61 m² 194.7 m³

2. hæð
 $3.92 \times 13.2 = 51.74 \text{ m}^2$
 $5.08 \times 14.4 = 73.15 \text{ m}^2$
 $124.89 \text{ m}^2 \times 2.7 = 337.0 \text{ m}^3$
 Þakryggi: $9 \times 14.4 = 129.6 \text{ m}^2 \times 0.31 = 88.7 \text{ m}^3$
 $129.6 \text{ m}^2 \times 1.69 = 109.5$
148.2

Handwritten calculations:
 $\frac{129.6}{4.33} = 29.9$
 $\frac{129.6}{4.125} = 31.4$
 $\frac{129.6}{4.875} = 26.6$

53770
53840
54840

LÍLA
TEIKNISTOFAN
Reykjavíkurvegi 66, 220 Hafnarfirði

Handwritten signature: Ólafur Þórunnson