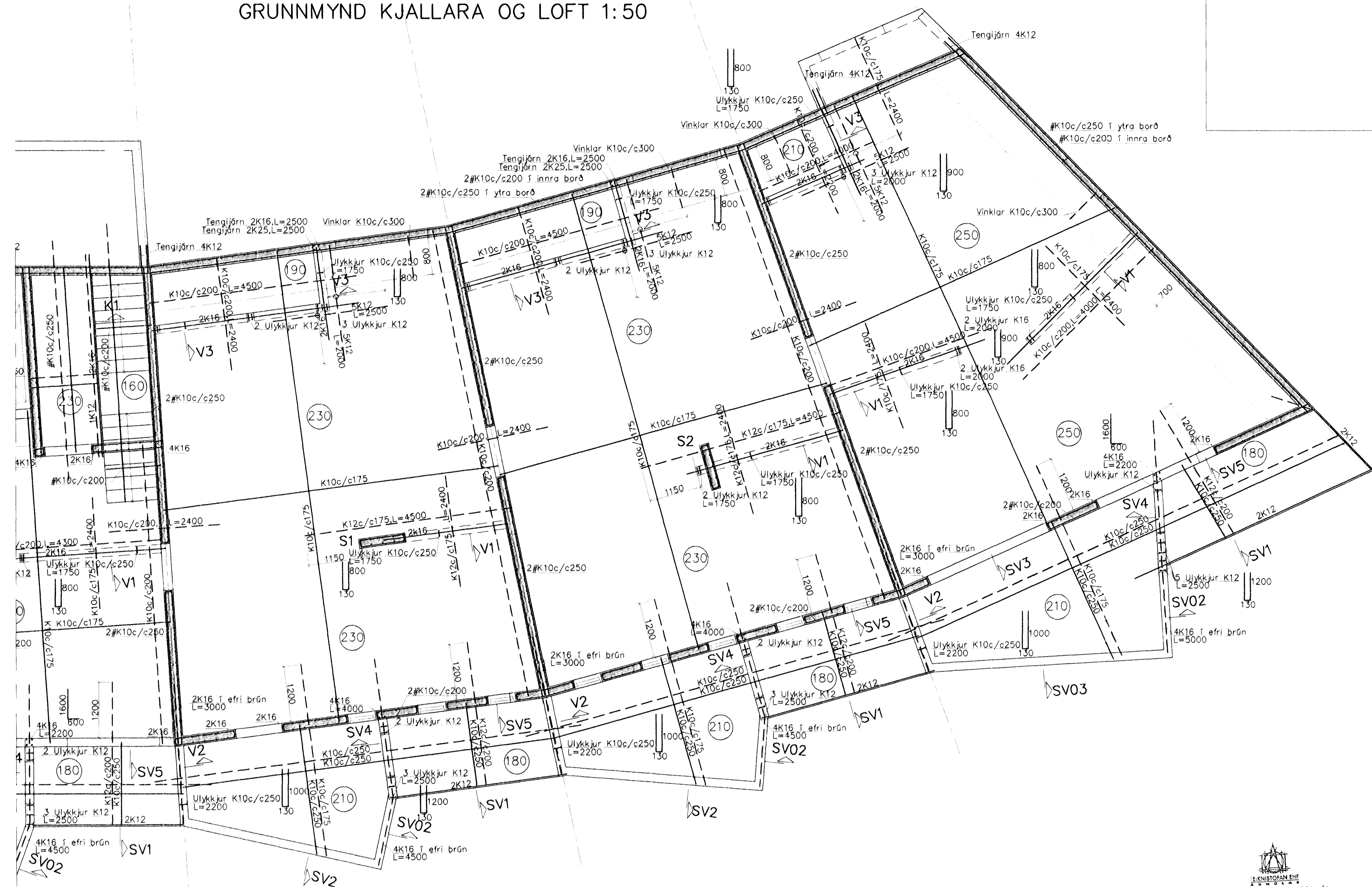
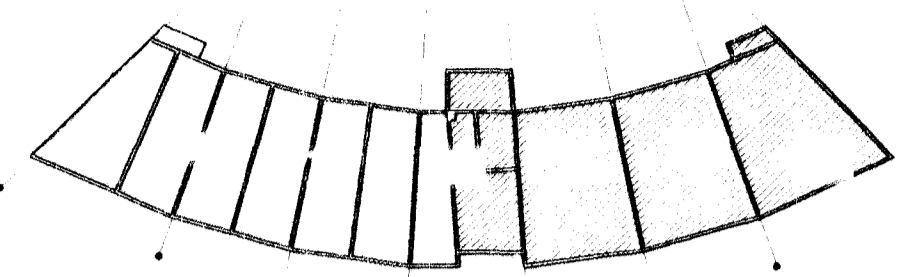
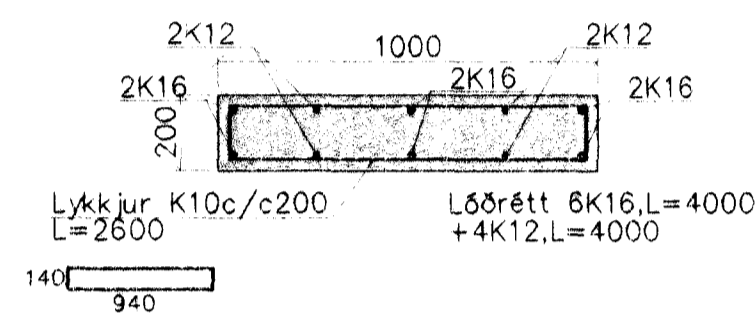


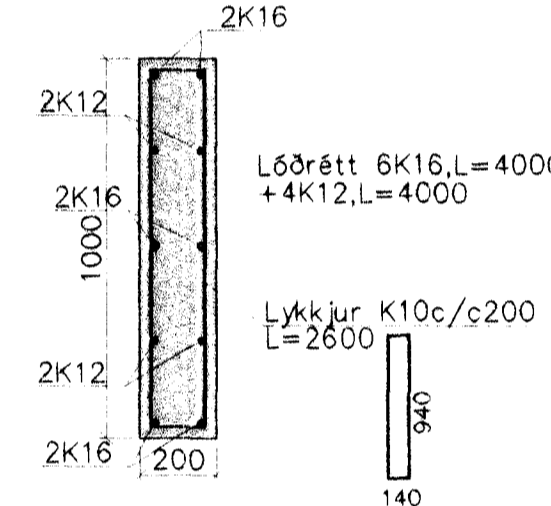
GRUNNMYND KJALLARA OG LOFT 1:50



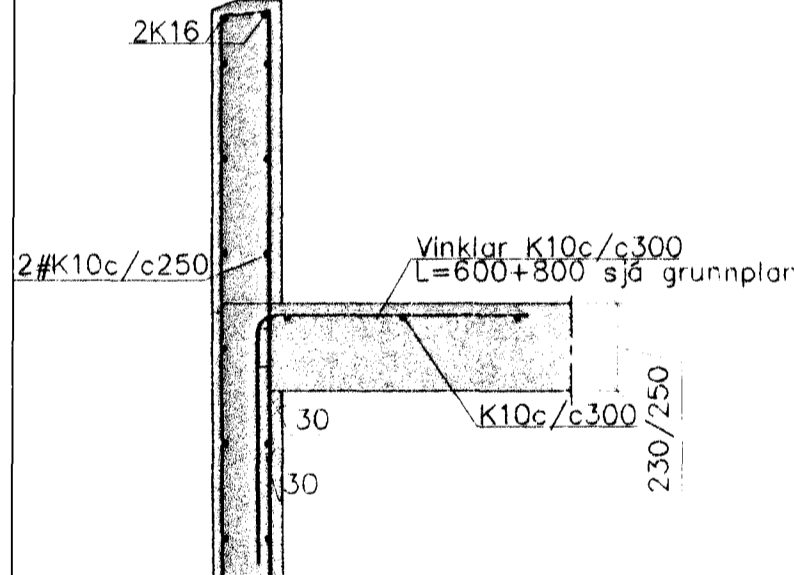
S1 1:20



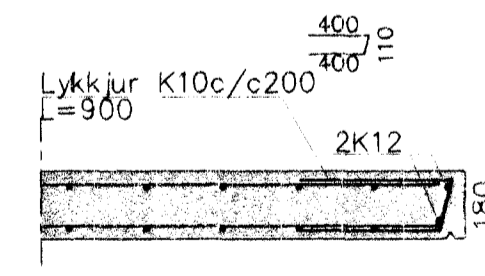
S2 1:20



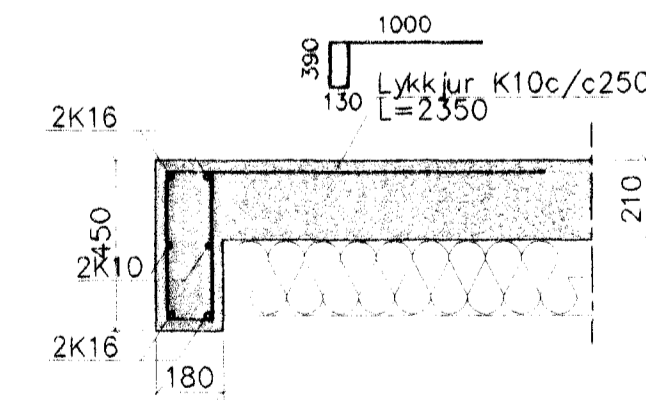
Hæðaskil 1:20



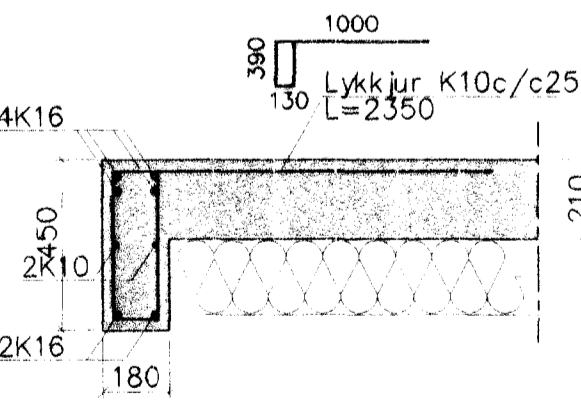
SV1 1:20



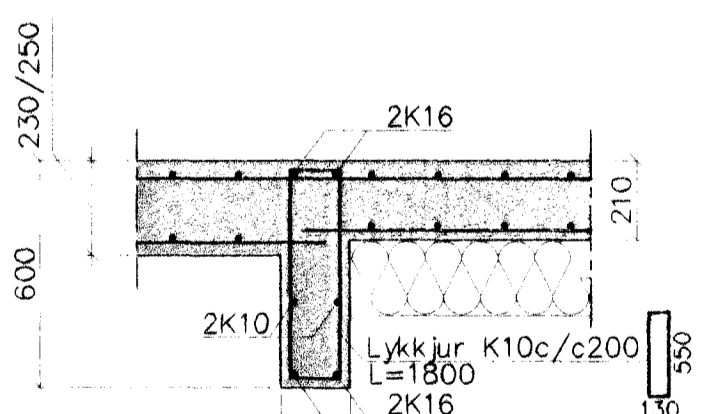
SV2 1:20



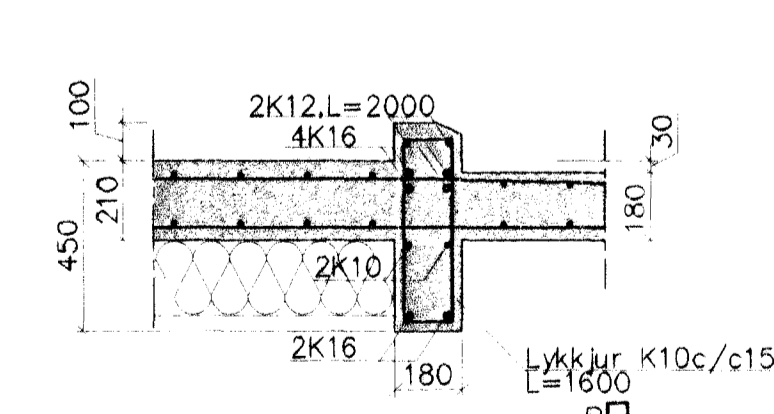
SV02 1:20



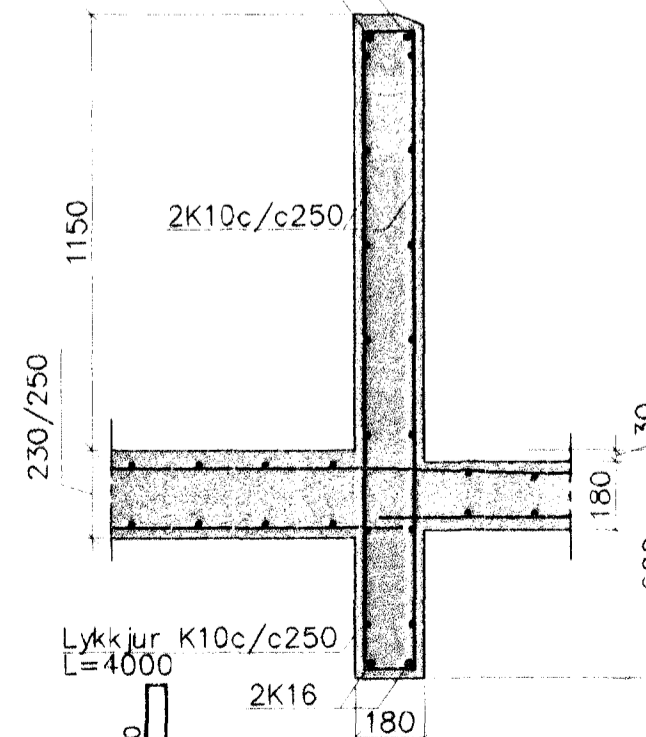
SV3 1:20



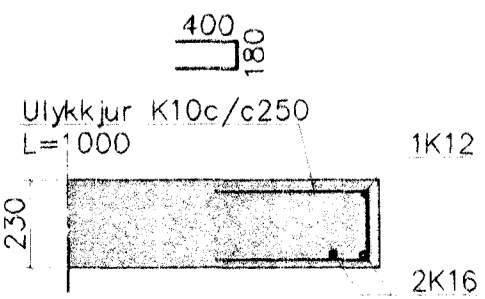
SV4 1:20



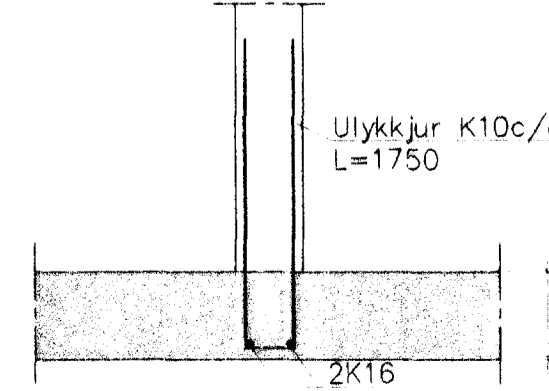
SV5 1:20



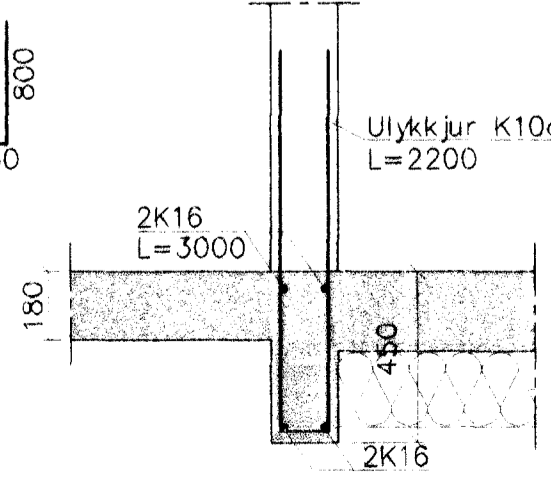
K1 1:20



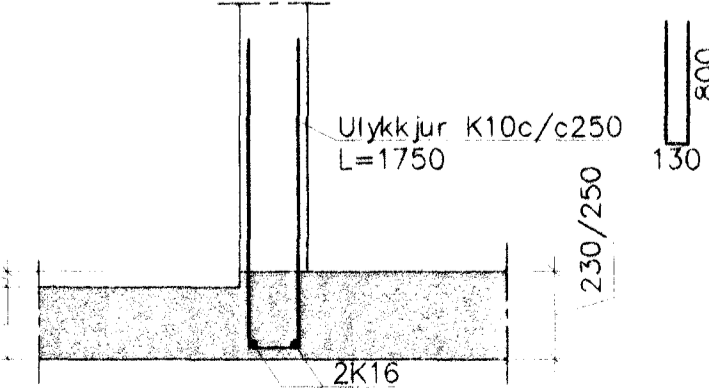
V1 1:20



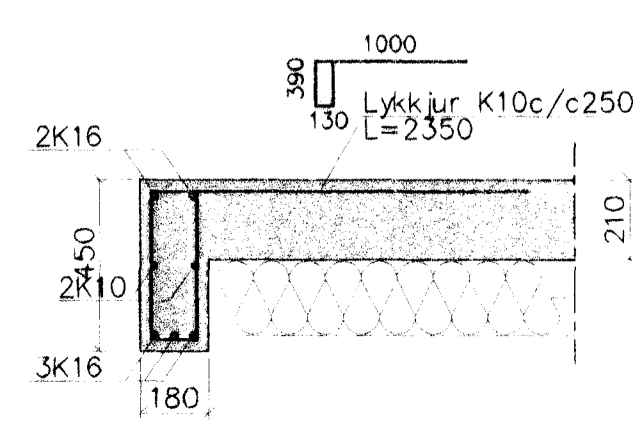
V2 1:20



V3 1:20



SV03 1:20



1. KENNEDY & SÖN  
 2. 112 og 119  
 3. 23 APR. 2002

Steypa S250.  
 Semen: > 300 kg/m³, vatnssementstala (v/s) <0.55, loftinnihald 5-6%, sigmál 80-100mm.  
 Steypa og steypustyrktarstál KS40 skv. IST-14/DS-411.  
 Steypuhúla á jörnum:  
 veggir úti 30mm  
 veggir inni 20mm  
 plötur úti 30mm  
 plötur inni 15mm  
 bitar 25mm

Meðfram dyrum, gluggum og opum komi 2K16, er nái minnst 800mm, út fyrir brúnir opa. Hönnun og framkvæmd verksins skal vera í samræmi við gildandi staðla og reglugerðir.

Breytingar	ERLUÁS 2, HAFNARFJ.		HÆKHTHS
Nr.	Dags.	Nofr.	M 1:50/20
			Nr. B102
			Dags. apr '02
			090638-4839