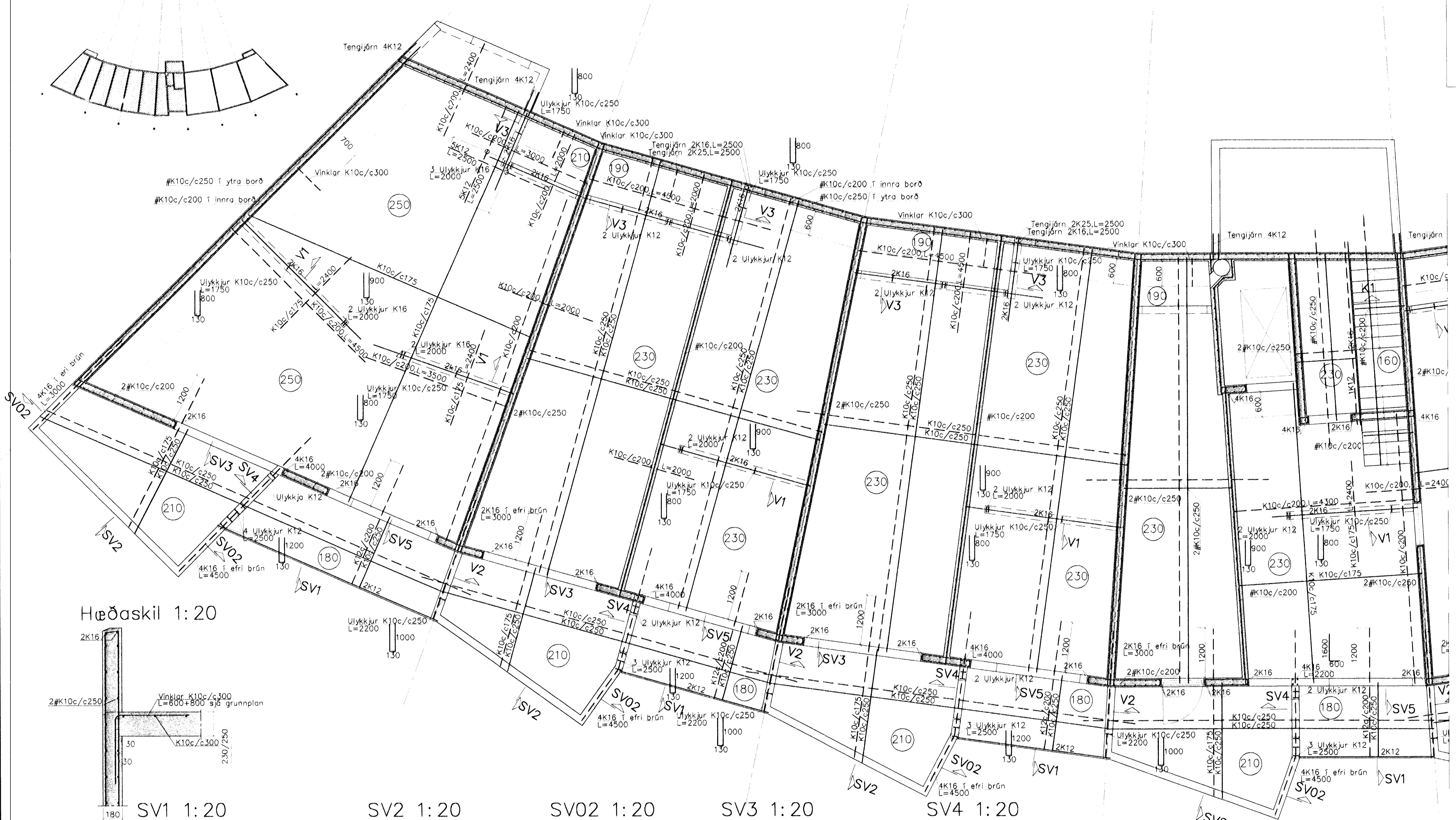
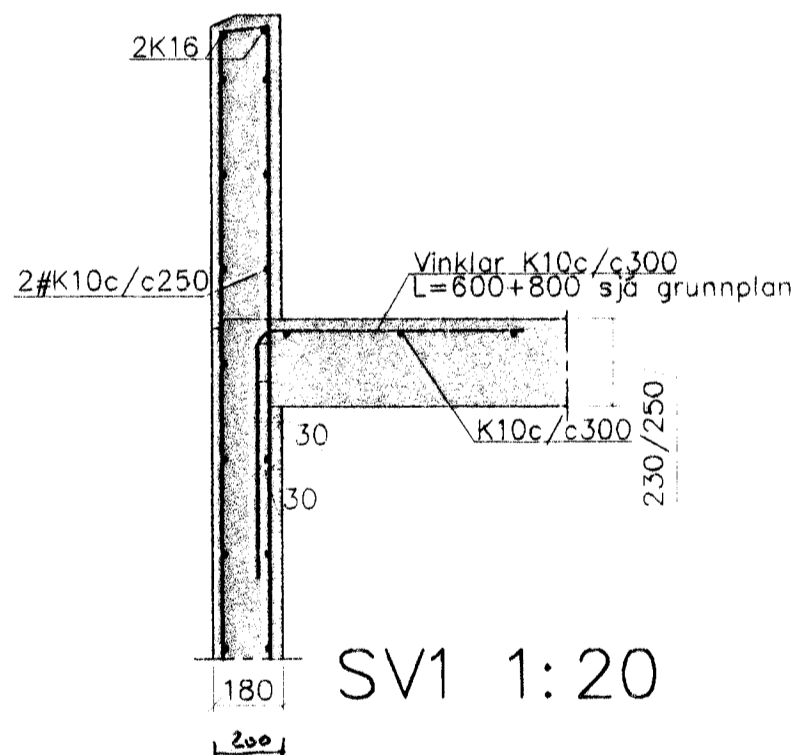


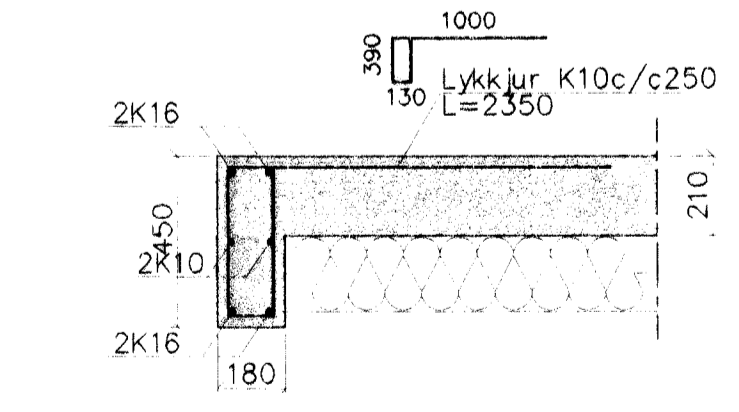
GRUNNMYND KJALLARA OG LOFT 1:50



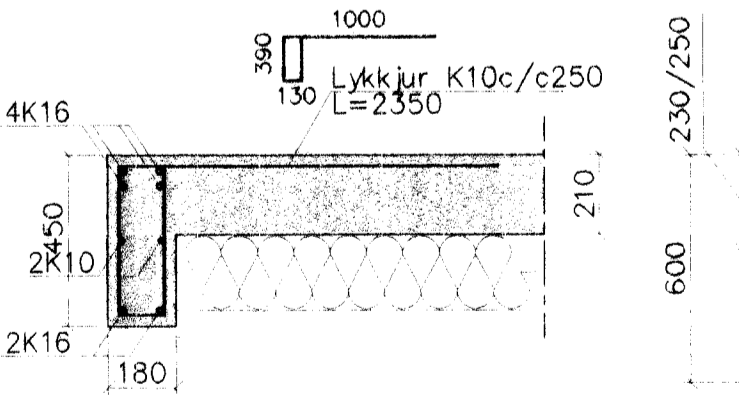
Hæðaskil 1:20



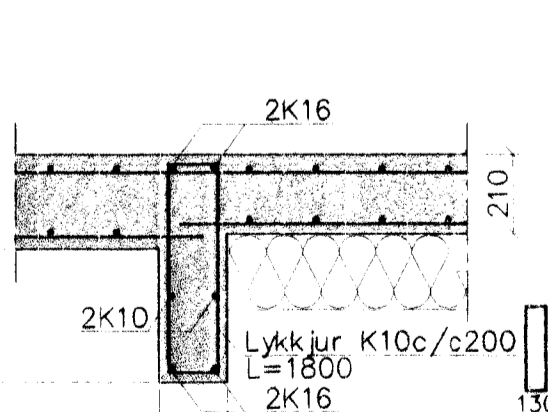
SV2 1:20



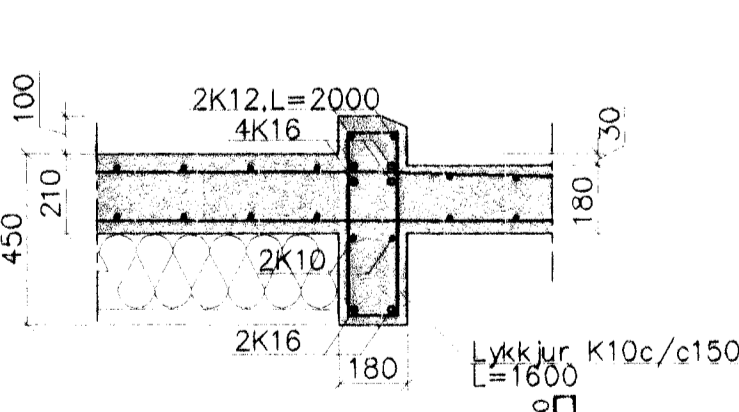
SV02 1:20



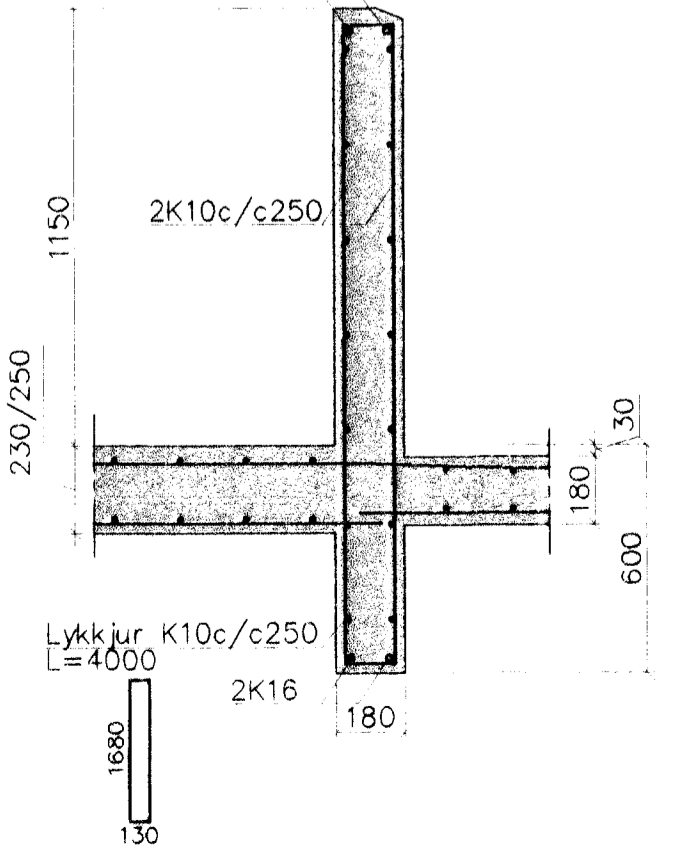
SV3 1:20



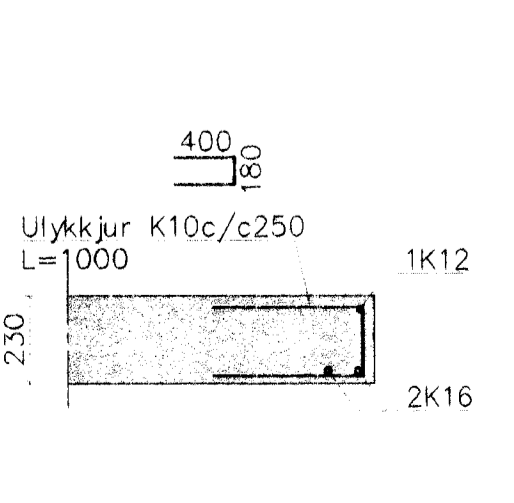
SV4 1:20



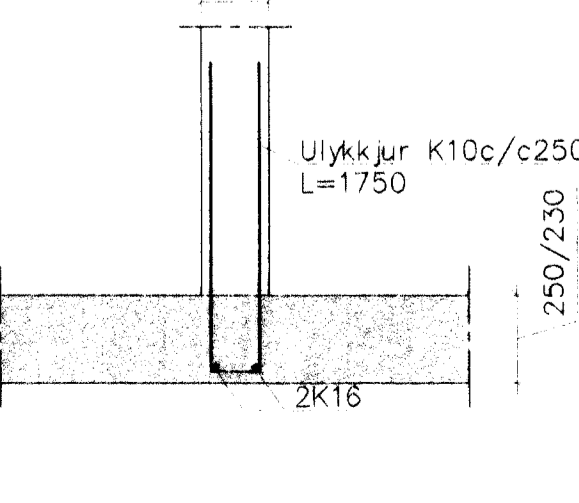
SV5 1:20



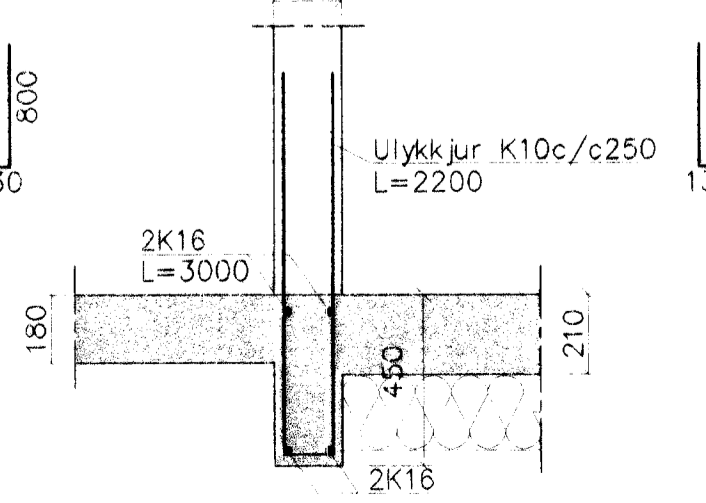
K1 1:20



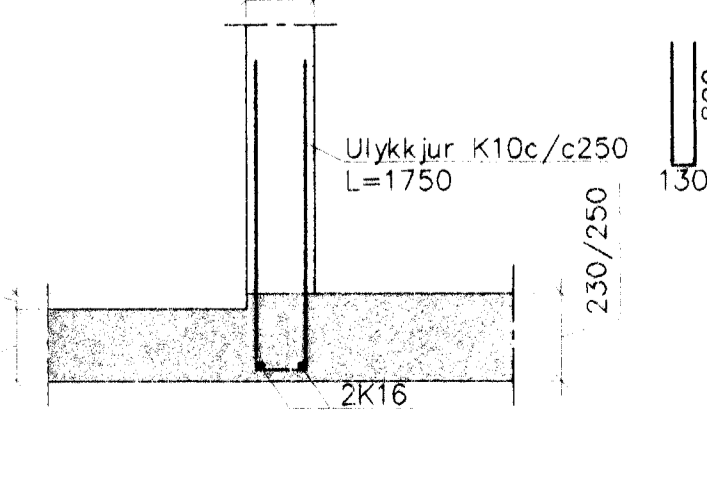
V1 1:20



V2 1:20



V3 1:20



Steypa S250.  
Sement > 300 kg/m<sup>3</sup>, vatnssementstala (v/s) < 0.55,  
loftinnihald 5-6%, sigmál 80-100mm.  
Steypa og steypustyrktarstál KS40 skv. IST-14/DS-411.  
Steypuhúla á jörnum:  
veggir úti 30mm  
veggir inni 20mm  
plötur úti 30mm  
plötur inni 15mm  
bitar 25mm

Meðfram dyrum, gluggum og opum komi 2K16, er nái  
minnst 800mm. út fyrir brúnir opa.  
Hönnun og framkvæmd verksins skal vera í samræmi við  
gildandi staðla og reglugerðir.

TEKNISSÍÐAN EHF.  
Vilfarinn og samræmdur vopndráttur, str.  
gr. 17.2.19.9.21 byggingarlegur.

*AS*

Byggingafræðingur  
Alfreit Þann  
23 APR 2002

Breytingar			ERLUÁS 2, HAFNARFJ.		
Nr.	Dags.	Nafn.			
			Verkfæðistofa Þráinn & Benedikt		
			Laugavegi 178, 105 Rvk.		
			Sími: 553 1770, 568 7775, Fax: 568-7701		
			Netfang: post@islandia.is		
			Burðarvirki veggir og loft		
			Kjallara		

H.Þ. | T.H.S. | S.  
M 1:50/20  
Nr. B101  
Dags. apríl '02  
090638-1839