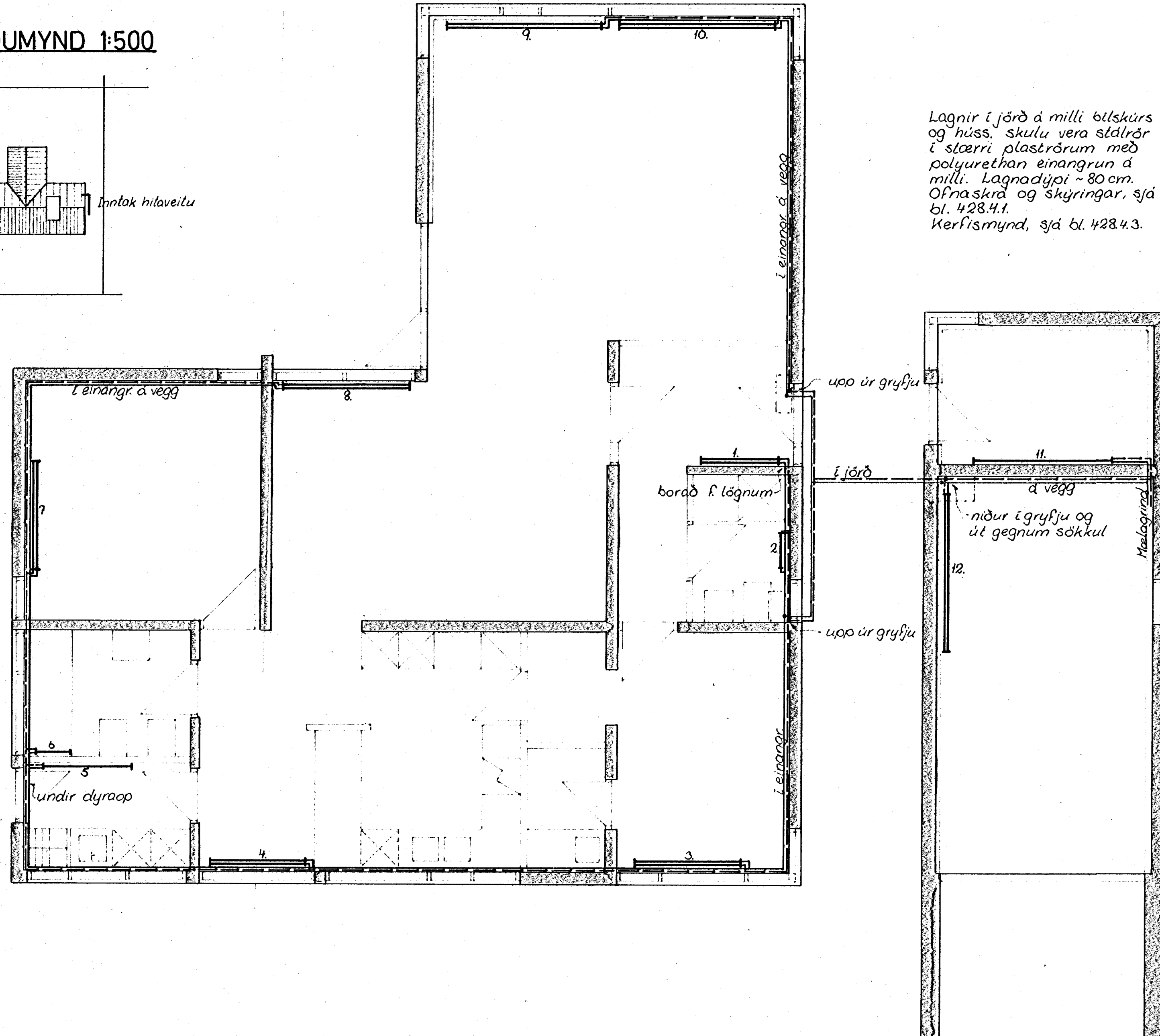
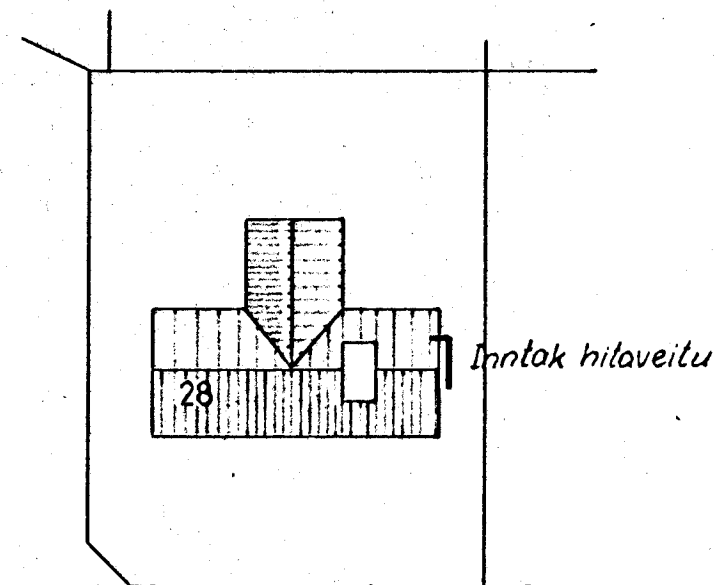
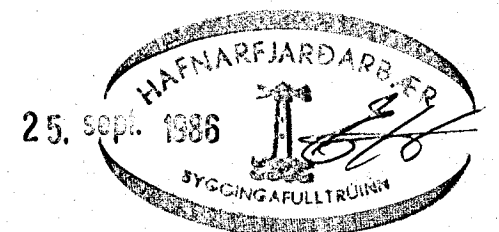


HITALÖGN GRUNNMYND HÆÐAR 1:50

AFSTÖÐUMYND 1:500



Lagnir í jörð á milli bltskúrs og húss. skulu vera stálrör í stærri plastrórum með polyurethan einangrun á milli. Lagnadypi ~ 80 cm. Ofnaska og skýringar, sjá bl. 428.4.1. Kerfismynd, sjá bl. 428.4.3.



S. Guðmundsson