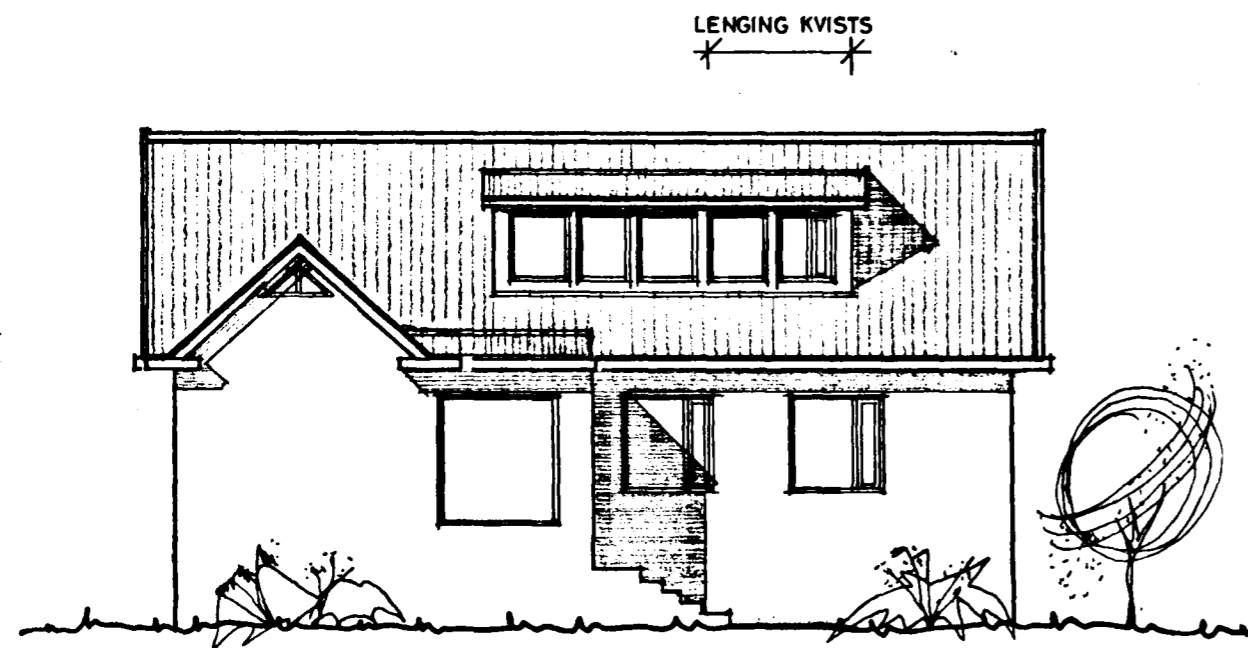
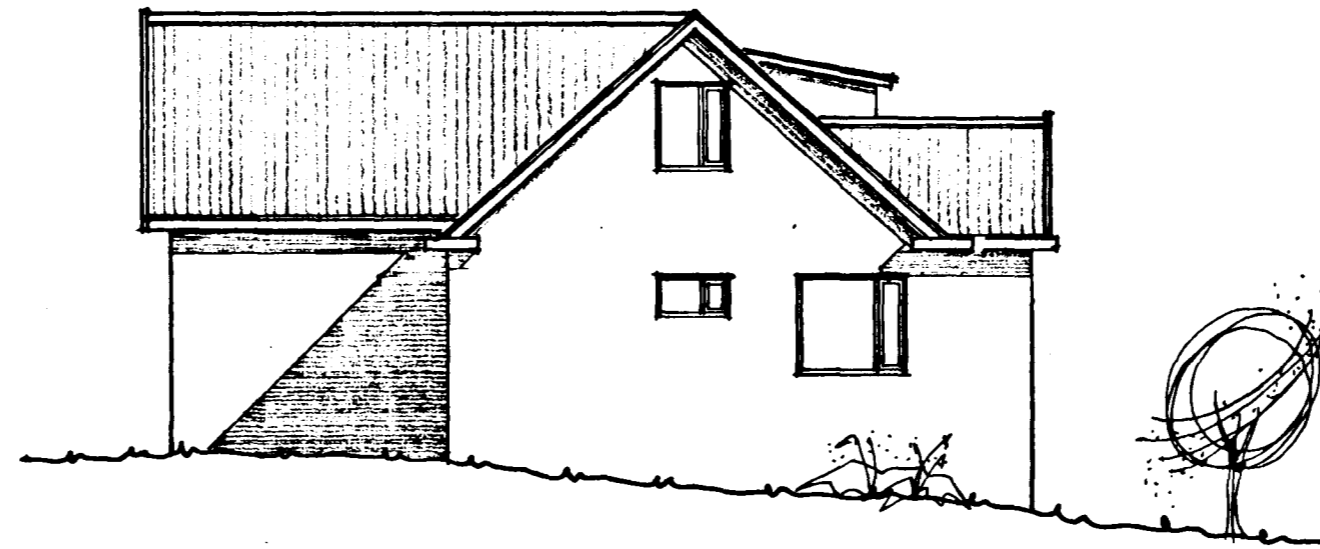


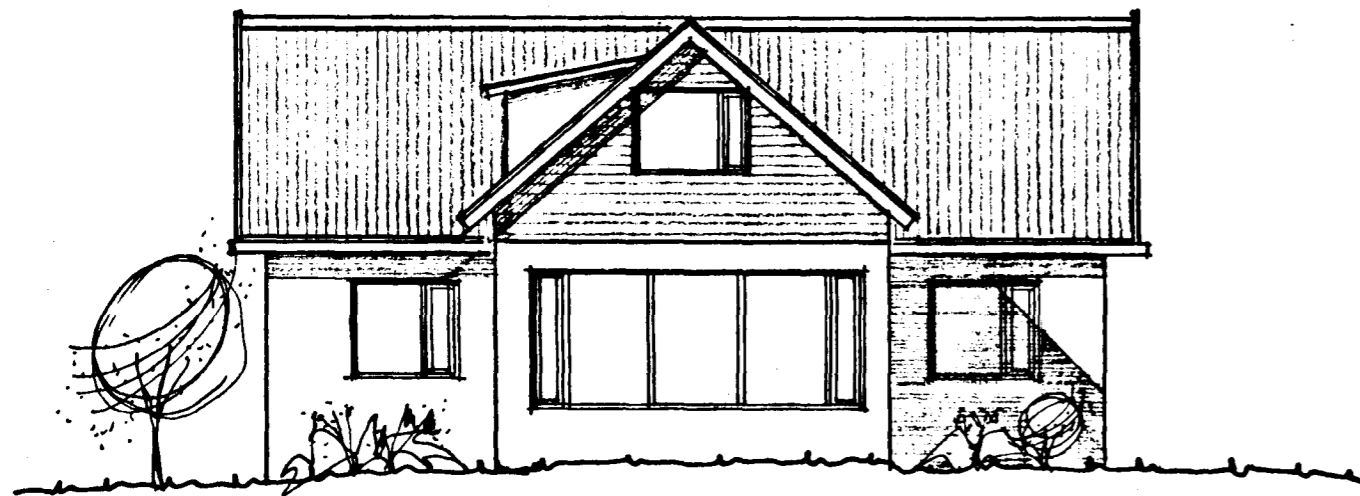
Samþykkt á fundi bygginga-
nefndar þ. 20.4.1983
BYGGINGAFULLTRÖNN
Í HAFNARFIRÐI
Páll J. Bjarnason



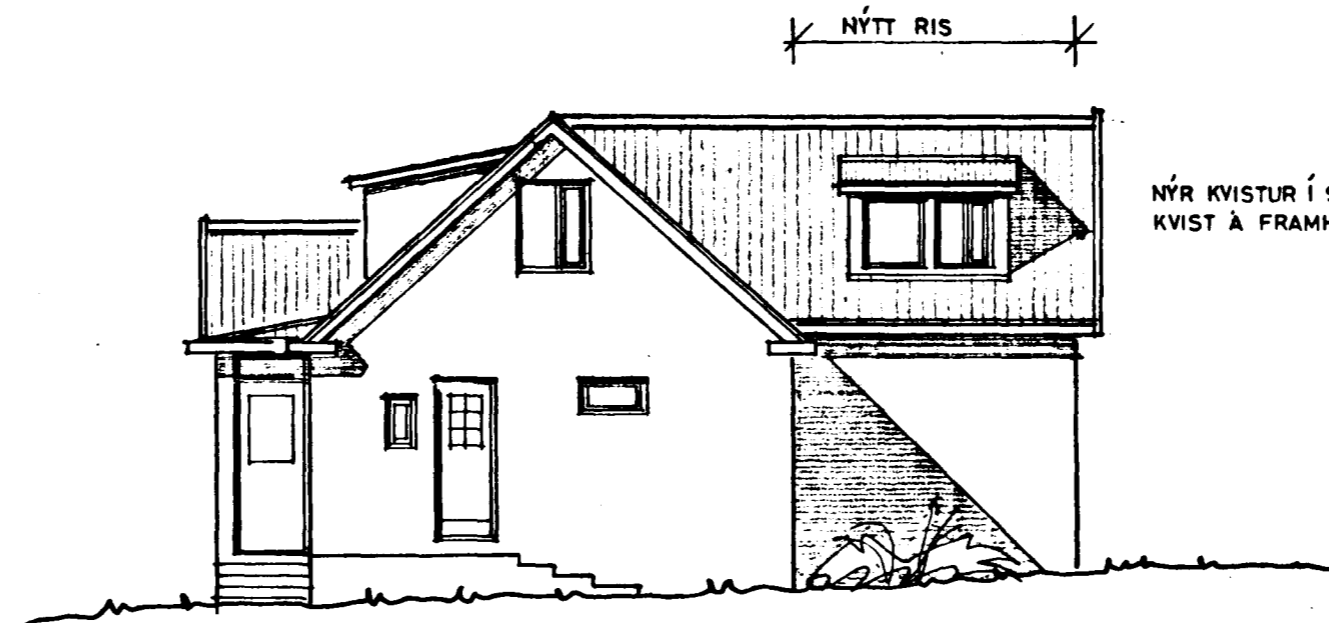
NORDAUSTUR 1:100



SUDAUSTUR 1:100



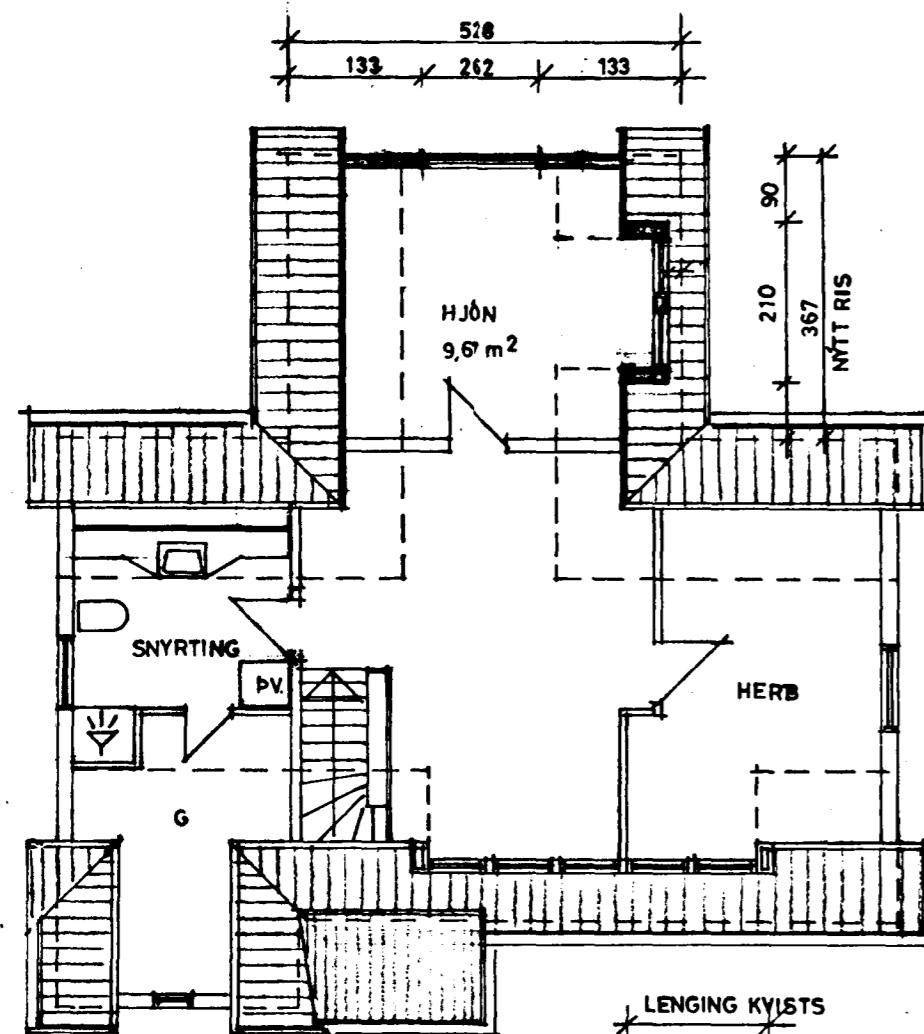
SÜÐVESTUR 1:100



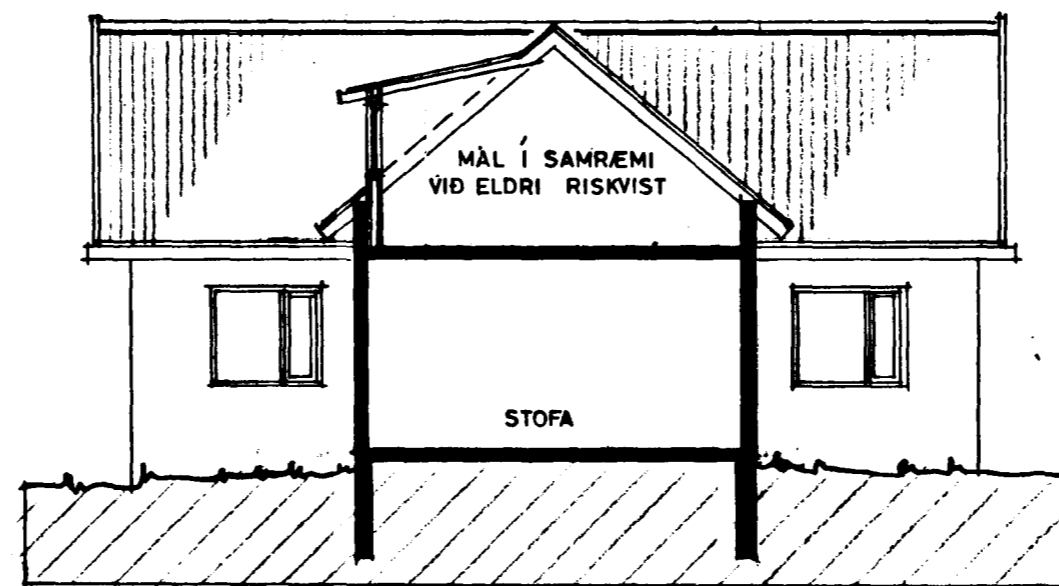
NORÐVESTUR 1:100

NÝR KVISTUR Í SAMREMI VIÐ
KVIST Á FRAMHLÍÐ

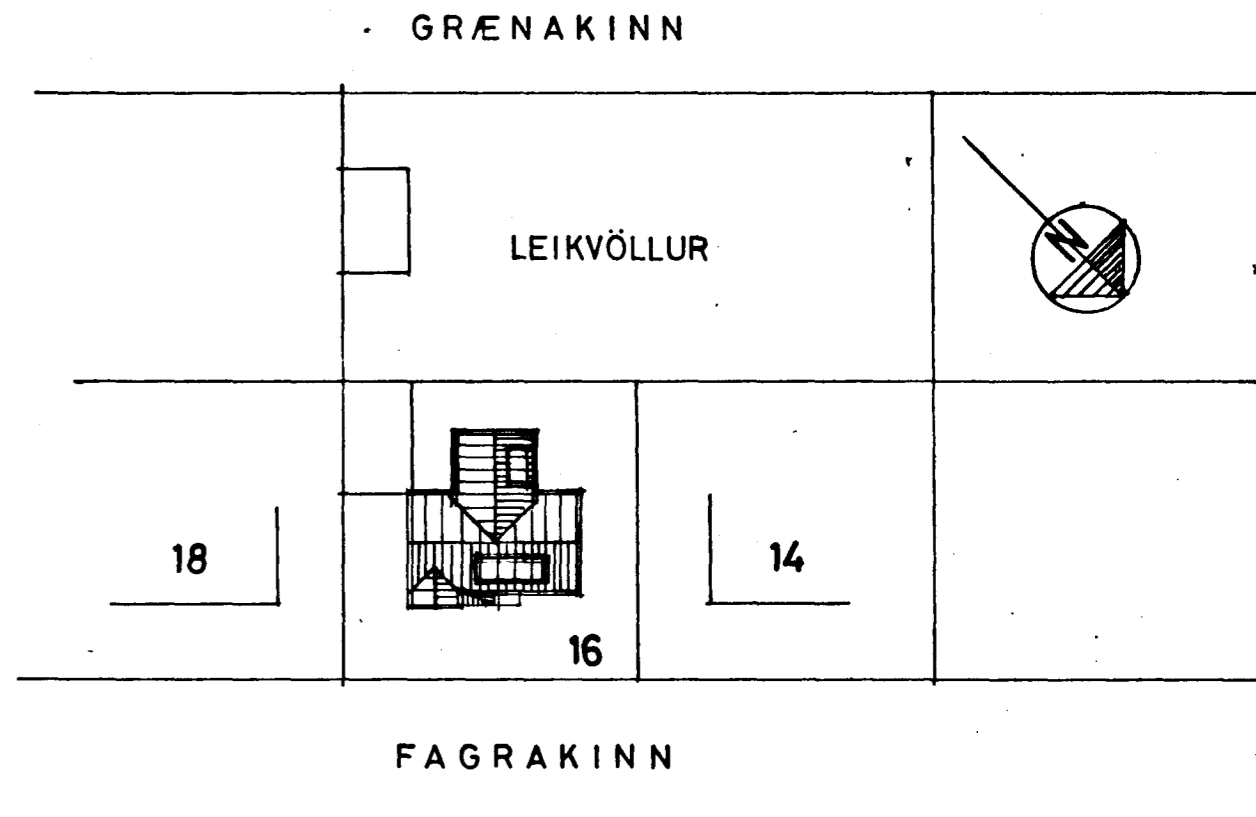
STÉKKUN: 11.7 m² - 41.4 m³



GRUNNMYND RISHÉÐAR 1:100



SNIÐ 1:100



AFSTÖÐUMYND 1:500

2180 - 0/60 - 0/

TEIKNISTOFAN REYKJAVÍKURVEGI 60, 220 HAFNARFIRÐI
PÁLL V. BJARNASON ARKITEKT, FAI S. 54355
FAGRAKINN 16. HAFNARFIRÐI - EINBYLISHÚS

144.01

VIÐBYGGING

Páll J. Bjarnason

DAGS.	APRIL 1983
KVARDI	1:100-1:500
HANNAÐ	P.V.B.
TEIKNAD	A.E.
YFIRF.	P.V.B.