

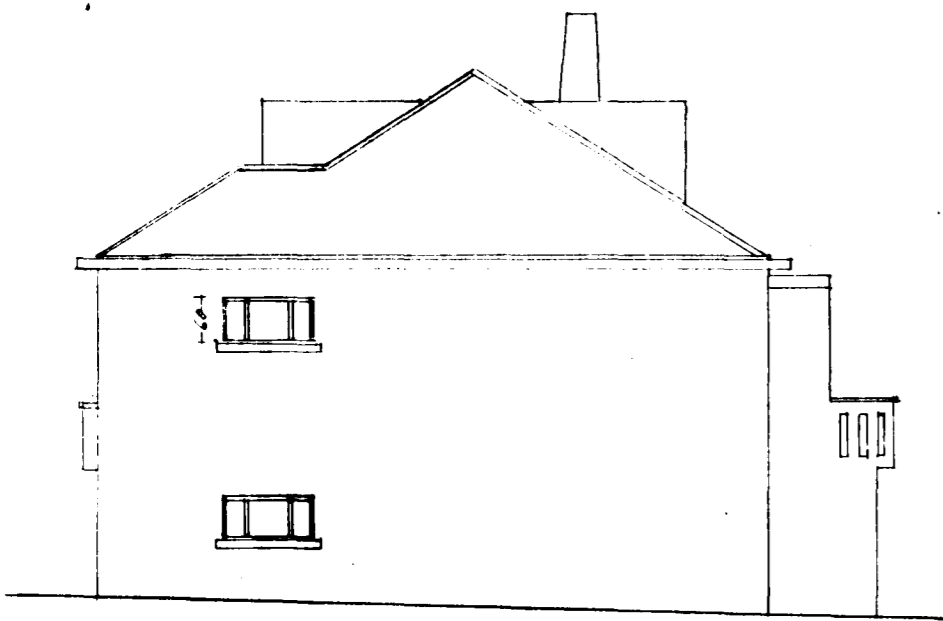
ff. 28/6 '55

Hús Hjálmars Ingimundarsonar

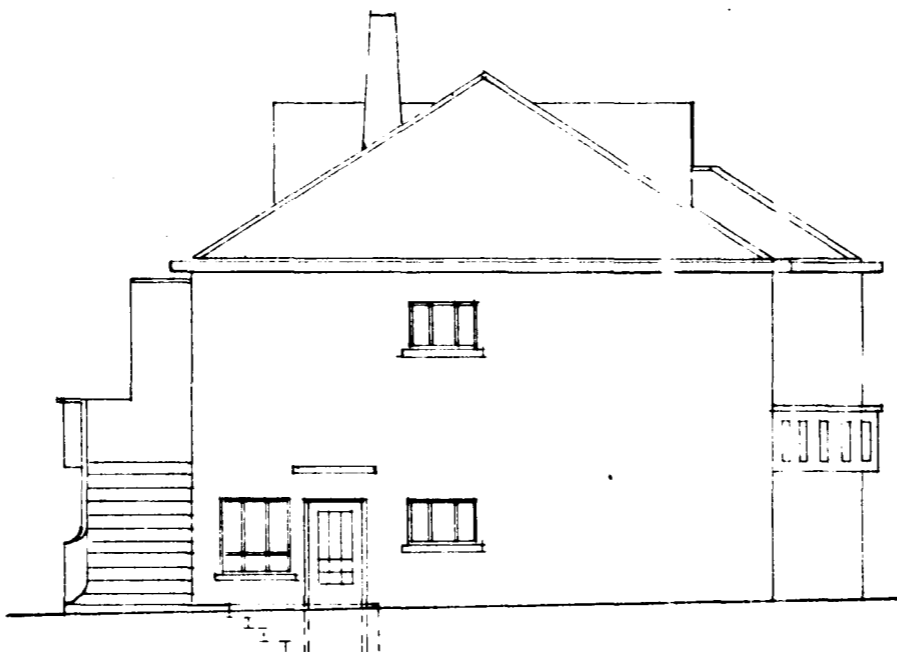
við Fögrukinn nr 20.

Mælitvarði 1=100

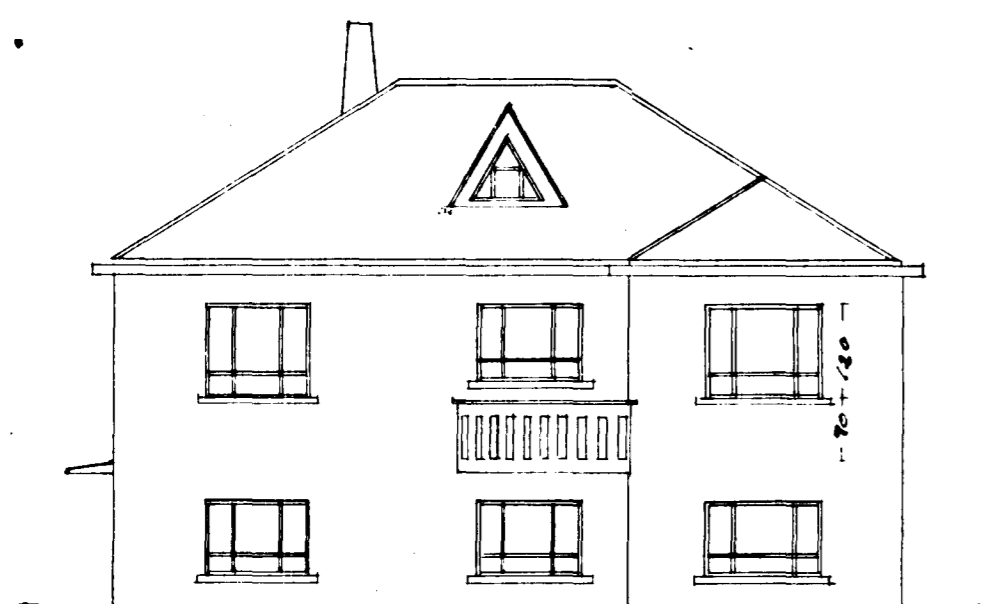
Hjálmar Ingimundarson
Bjarni Sveinsson



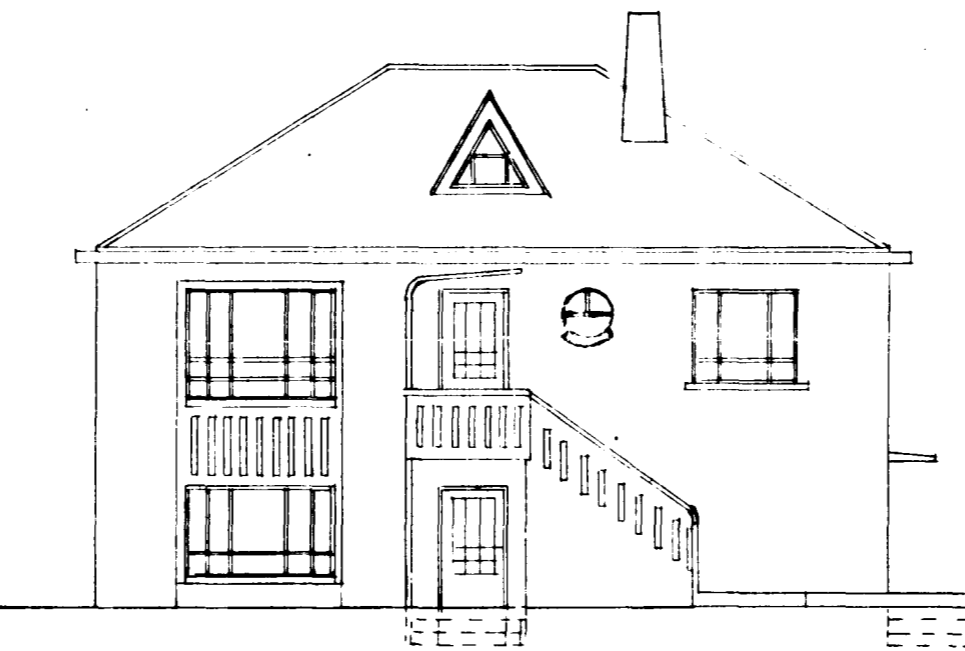
Suðaustur



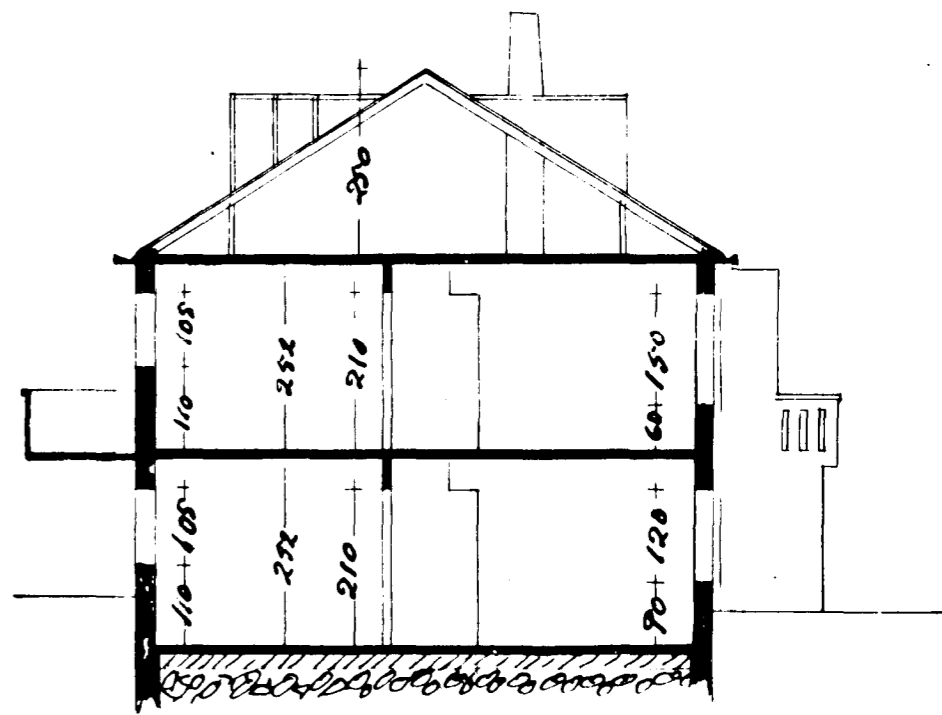
Norðvestur



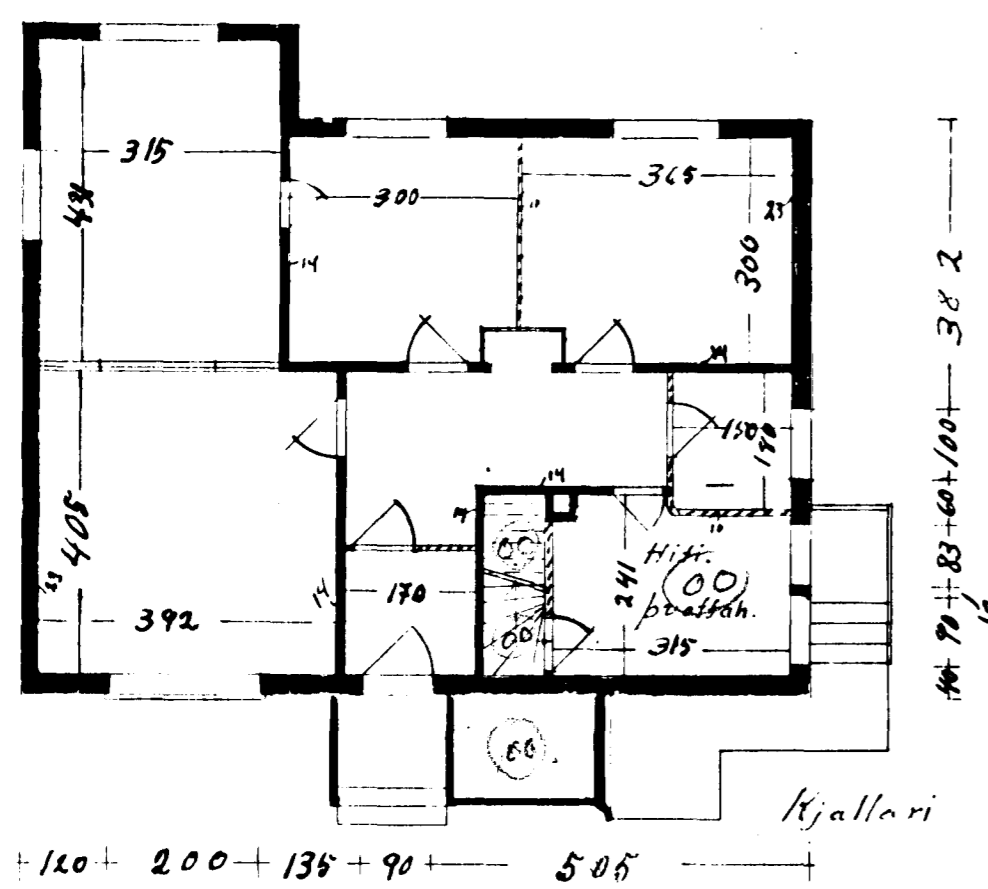
Suðvestur



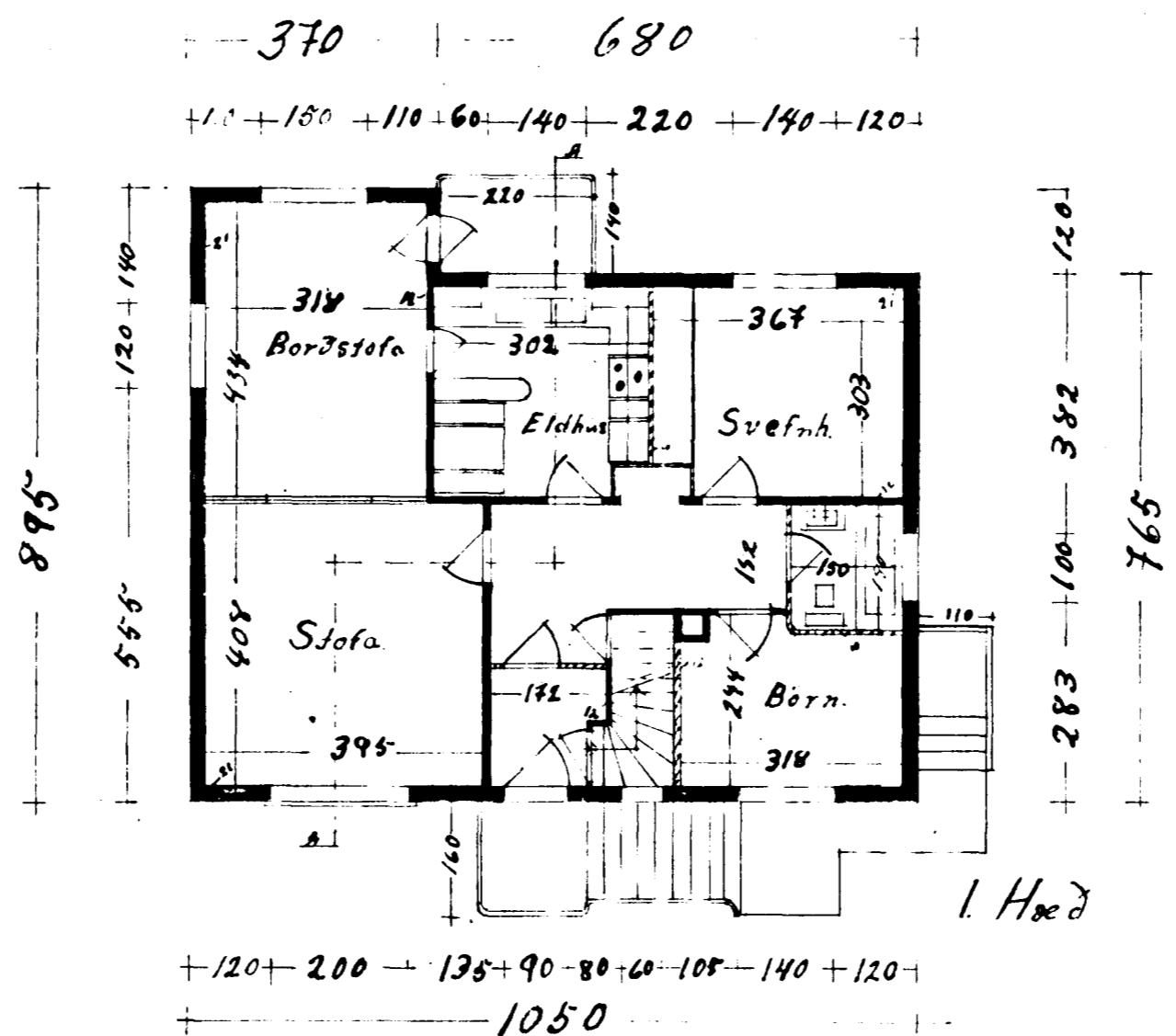
Norðaustur



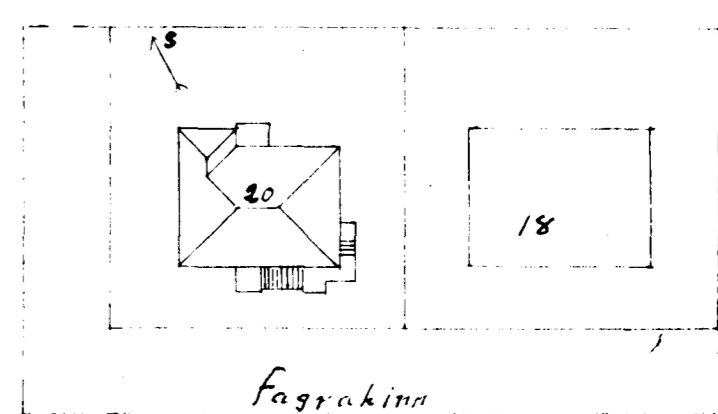
Skurður A-A



Kjallari



I. Hæð



Fögrukinn

Stjórðunmynd 1=500

Hafnarlíði í Maí, 1955.

Hjalmar Ingimundarson