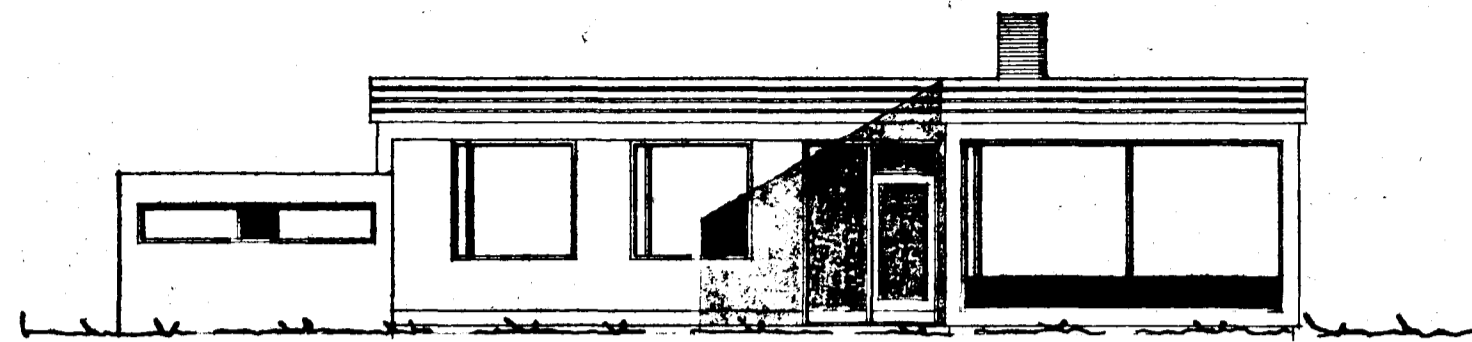
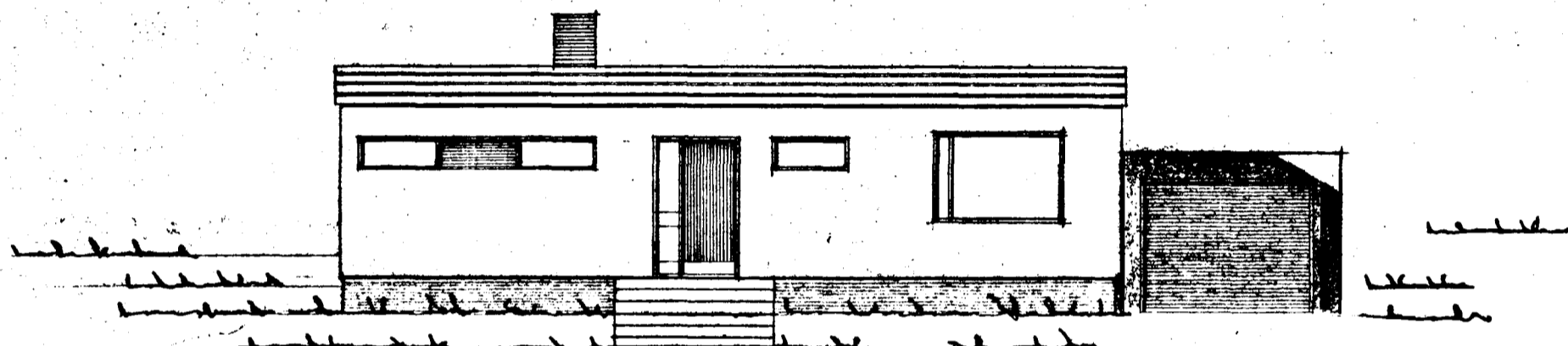


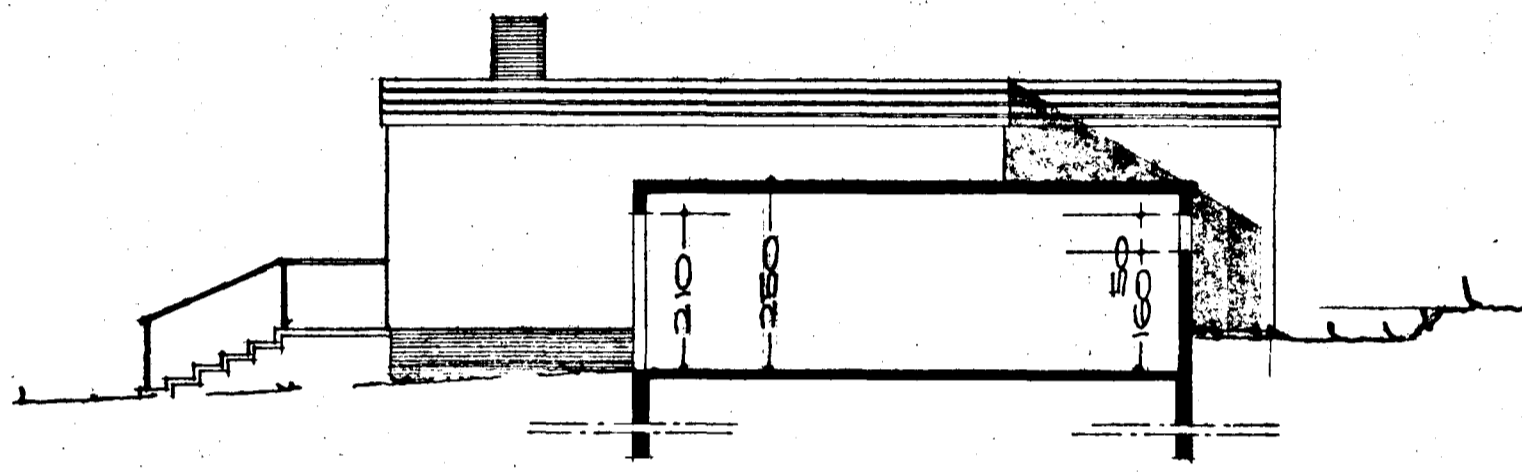
AUGTUR



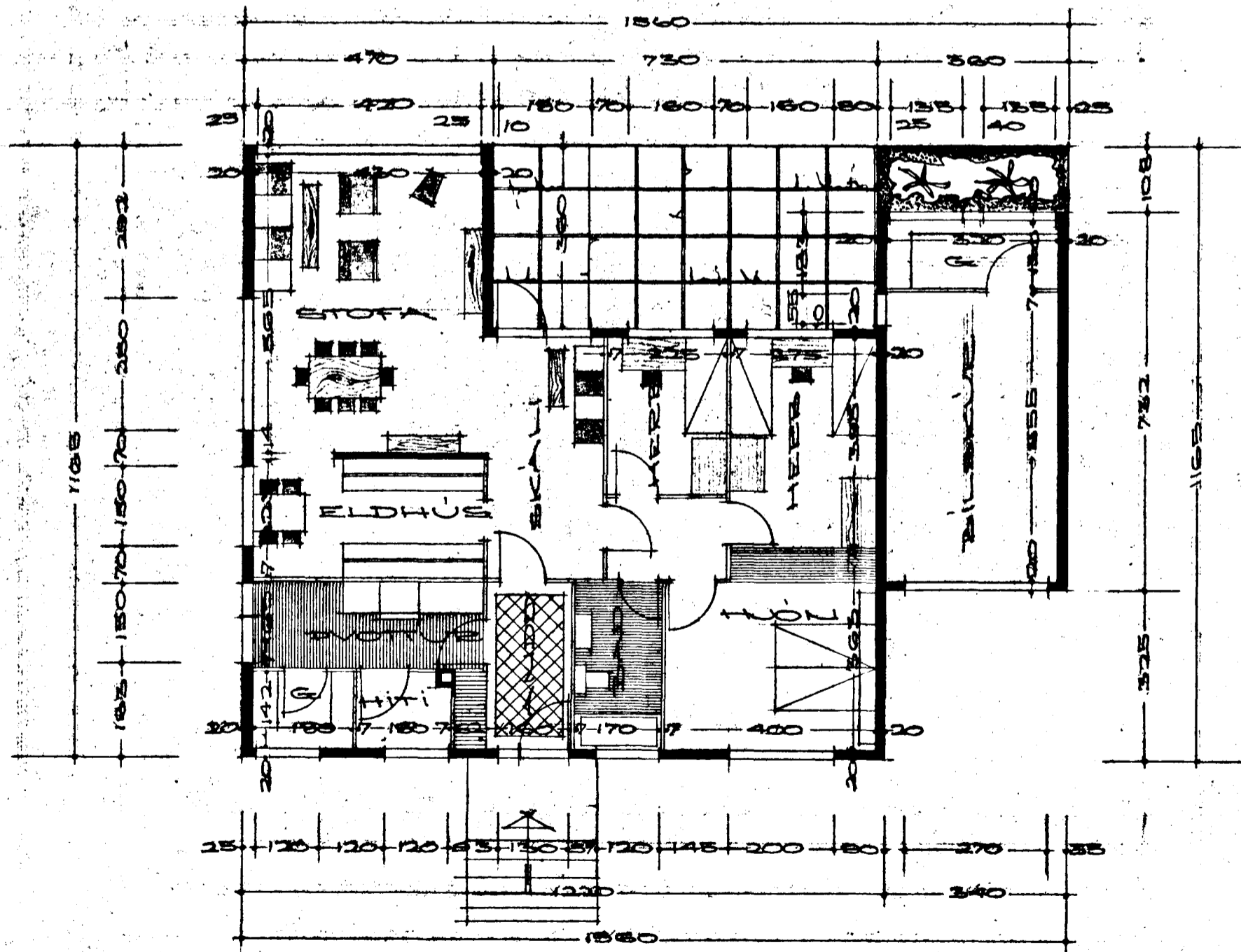
SUDUR



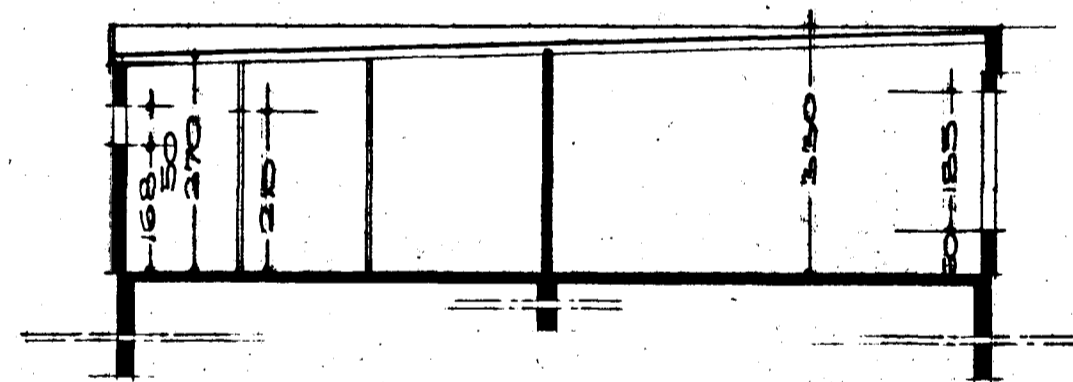
NOÐRUR



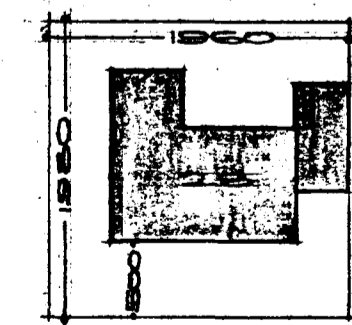
VESTUR



GEUNNMYND



SKURÐUR



FAGBÆKINN

AFSTÖÐUMYND 1:1 MÁL 1100
 FLATAFMÁL HÚSS 115.13 M²
 FLATAFMÁL LODAR 388.08 M²

REYKJAVÍK 1. APRÍL 1965

Hartan Sveinsson