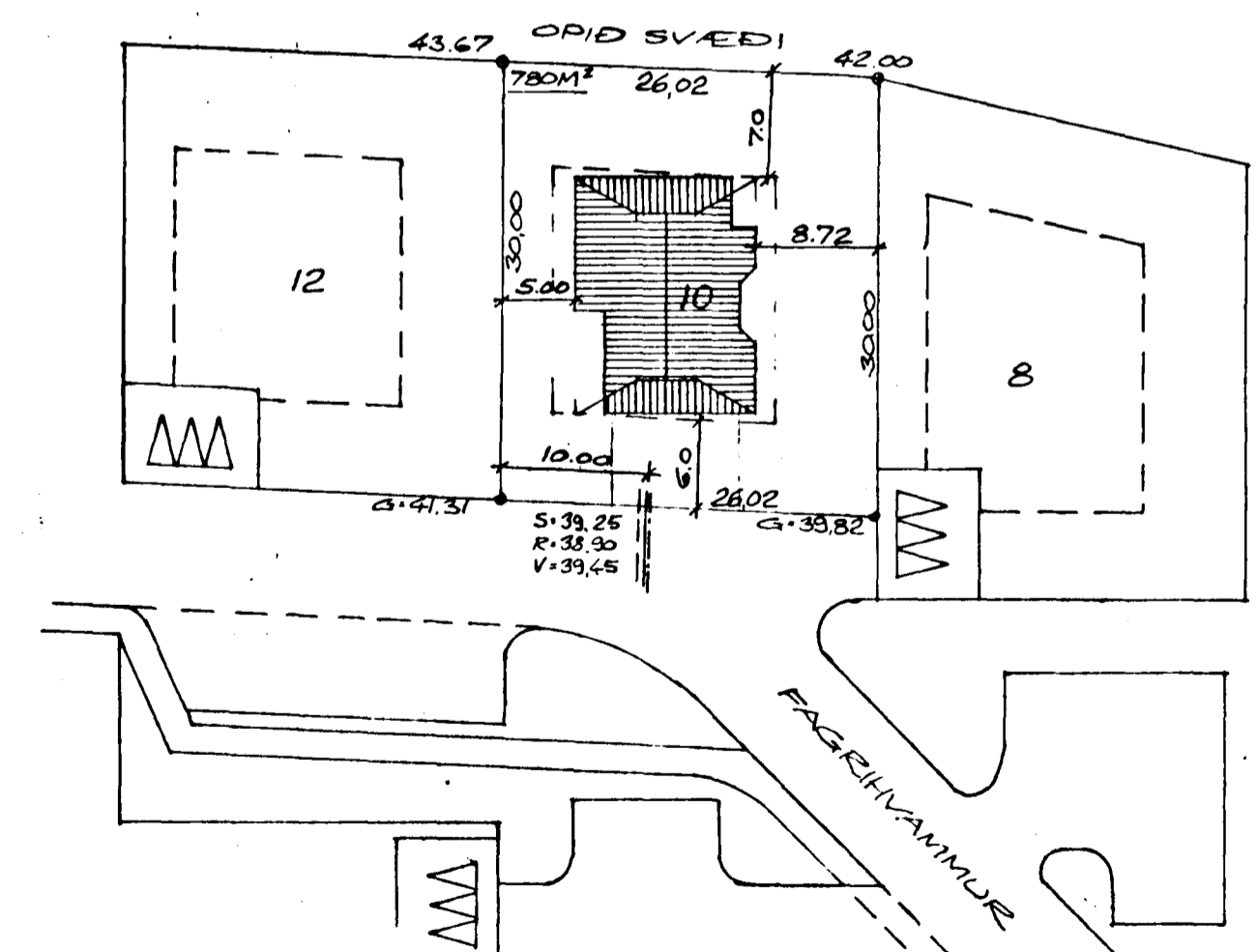
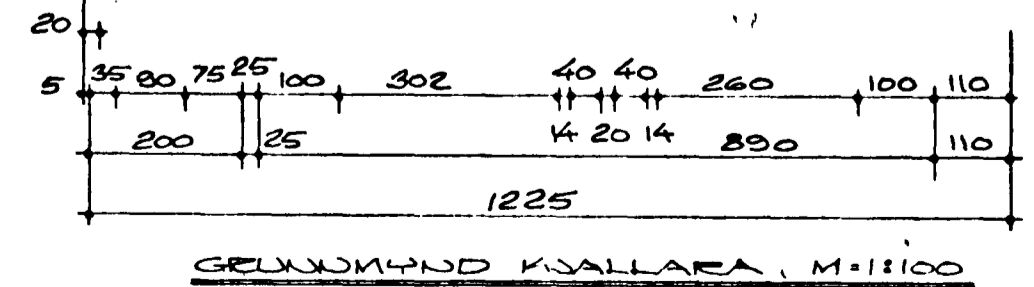
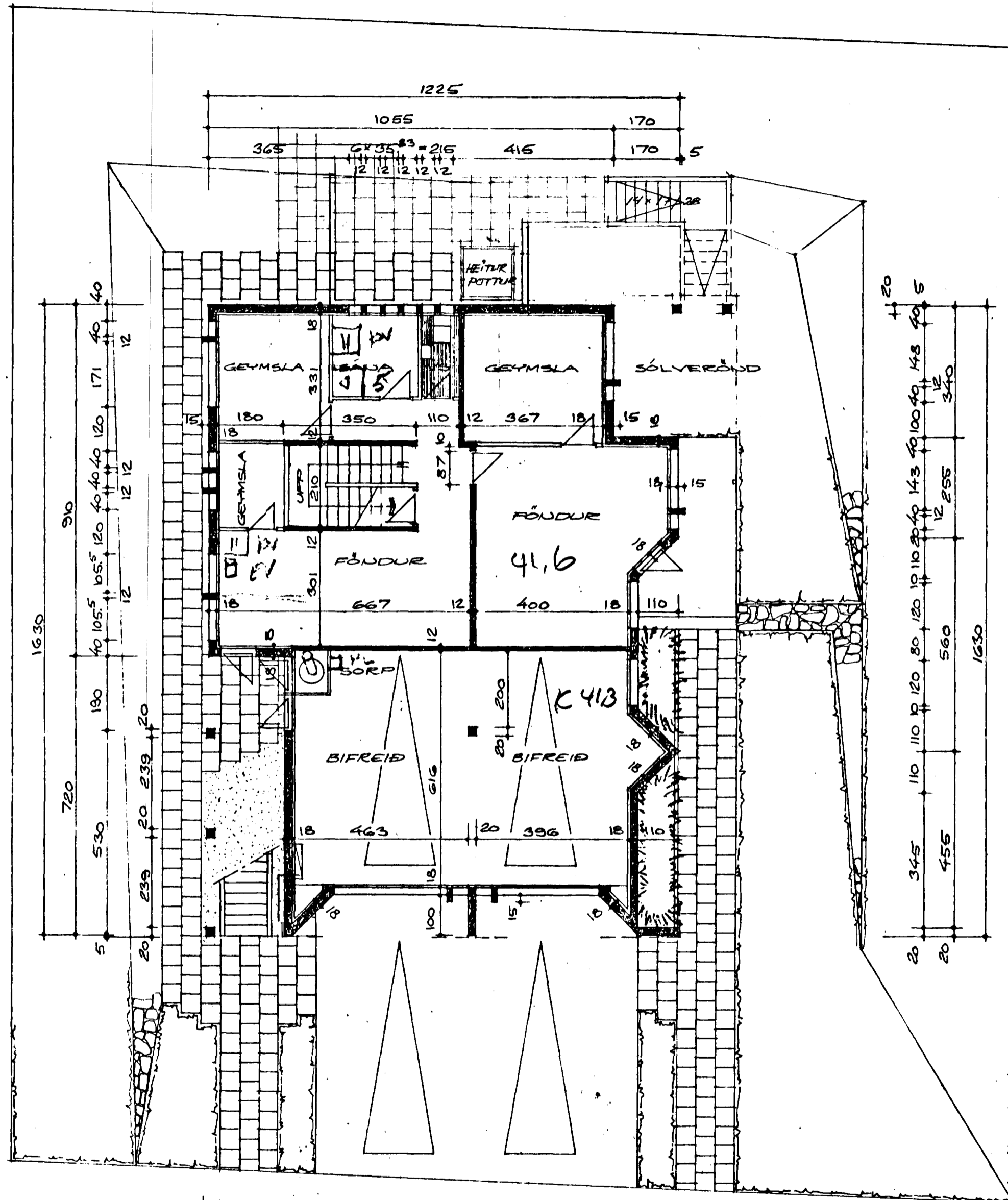


Samþykkt á fundi bygginga-
nefndar þ. 5.16.1986
BYGGINGAVALTRÚINN
Í HAFNARFIRÐI
Erlendi



AFSTÖÐUMYND, M=1:1500
 FLATARMÁL BÍFREIÐAGEYMSLU = 53,50 M² NETTÓ
 FLATARMÁL HÚSS = 154,05 M² NETTÓ
 FLATARMÁL HÚSS = 177,24 M² BRÜTTÓ
 NÝTINGARHLUTFALL = 0,227
 NÝTINGARHLUTFALL = $\frac{154 + 138,6 + 58,6}{780} = 0,45$
 RÚMMÁL HÚSS = 1152 M³
 HÖLUNARTÖLUR:
 LITVEGGIR, VEGIR MEDALGILDI: K=1,0
 GOLF: K=1,0
 RANA: K=0,5

FAGRIHVAMMUR NR. 10
 HAFNARFIRÐI Í JÚLI 1979
 ARNARHRAUNI 47 50587

Arnar Hrauni