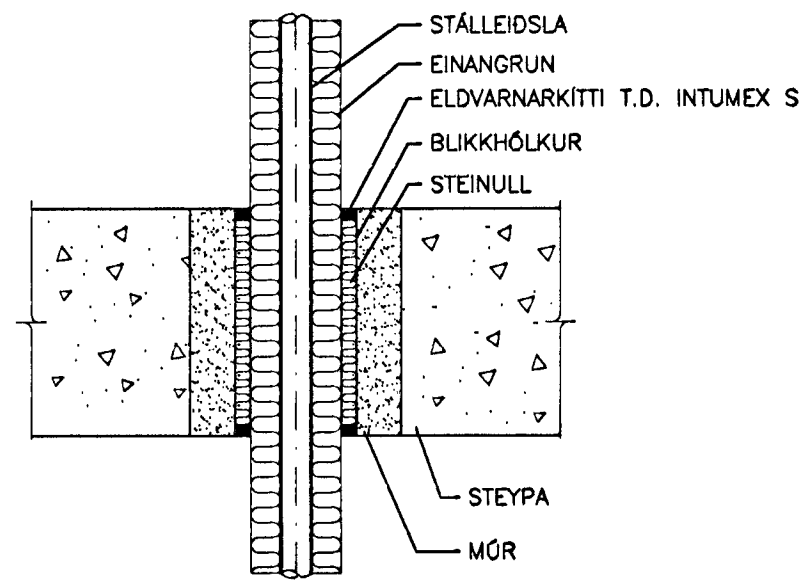
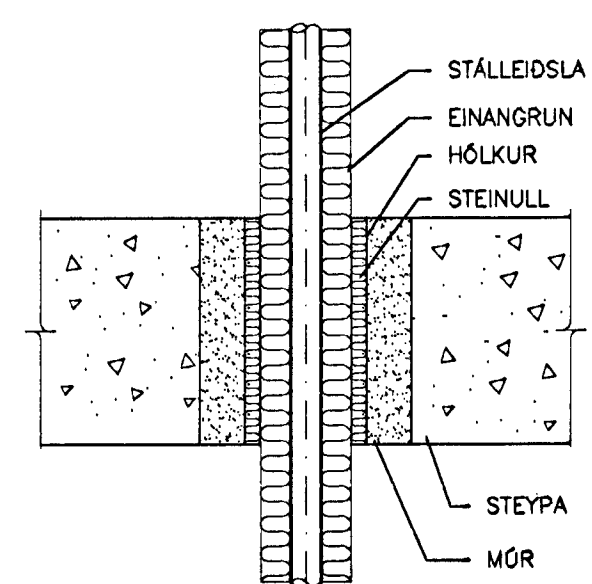


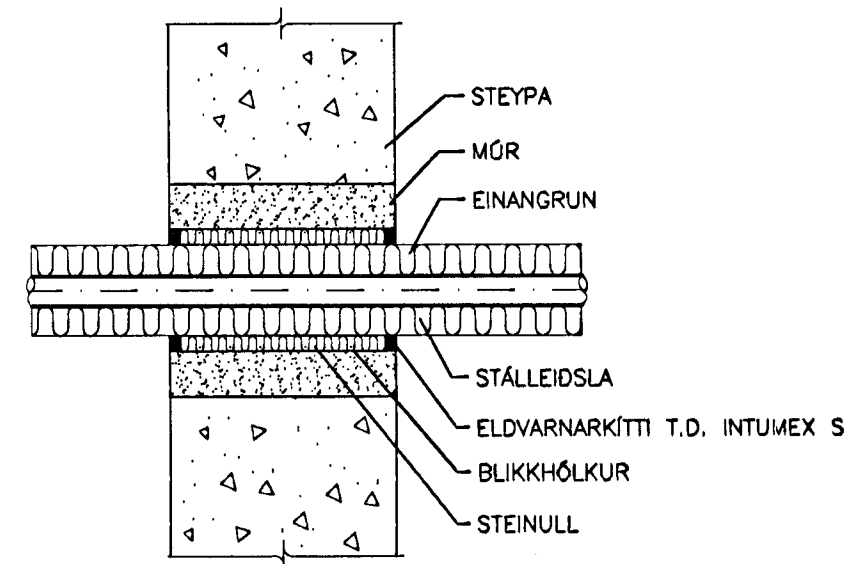
OFNASKRÁ $\Delta t = 35^\circ\text{C}$								
HITASTIG VATNS: $75^\circ\text{C} - 40^\circ\text{C}$								
OFN NR.	AFL W	GERD	HÉÐ mm	LENGD mm	STADS-STÖTA	OFNLOKAR	STILLI-TALA	Kv m ² /h
0-01-01	310		500	700	A - B	RA-U2	1,5	0,03
0-01-02	310		500	700	C - D	RA-U2	1,5	0,03
0-02-01	200		280	650	A - B	RA-U2	1,0	0,02
0-03-01	460		500	1000	A - B	RA-U2	2,5	0,05
0-11-01	200		280	650	C - D	RA-U2	1,0	0,02
0-12-01	200		280	500	A - B	RA-U2	1,0	0,02
0-13-01	850		280	2750	B - C	RA-U2	4,5	0,09
1-01-01	3100		600	3000	A - D	FJVR		0,34
1-01-02	5600		3000	1000	B - D	FJVR		0,53
1-02-01	1300		500	1450	C - D	RA-U2	6,5	0,14
2-02-01	200		280	650	A - B	RA-U2	1,0	0,02
2-03-01	200		280	650	A - B	RA-U2	1,0	0,02
2-03-02	200		280	650	C - D	RA-U2	1,0	0,02
2-04-01	1150		500	2500	B - C	RA-U2	6,0	0,13
2-05-01	1150		500	2500	B - C	RA-U2	6,0	0,13
2-06-01	1150		500	2500	B - C	RA-U2	6,0	0,13
2-07-01	1150		500	2500	B - C	RA-U2	6,0	0,13
2-09-01	1400		500	3000	A - D	RA-U2	7,0	0,15
2-11-01	1400		500	3000	B - C	RA-U2	7,0	0,15
2-12-01	1150		500	2500	A - D	RA-U2	6,0	0,13
2-13-01	1150		500	2500	A - D	RA-U2	6,0	0,13
2-14-01	1150		500	2500	A - D	RA-U2	6,0	0,13
2-14-02	1150		500	2500	B - C	RA-U2	6,0	0,13
2-15-01	1400		500	3000	A - D	RA-U2	7,0	0,15
2-16-01	700		500	1500	A - B	RA-U2	4,0	0,08
2-16-02	1150		500	2500	B - C	RA-U2	6,0	0,13
2-14-01	2100		500	2500	A - D	RA-U2 10/RA2020	9,0	0,20
3-02-01	200		280	650	A - B	RA-U2	1,0	0,02
3-03-01	200		280	650	C - D	RA-U2	1,0	0,02
3-04-01	1000		500	2100	B - C	RA-U2	5,5	0,11
3-04-02	1000		500	2100	A - D	RA-U2	5,5	0,11
3-04-03	1000		500	2100	B - C	RA-U2	5,5	0,11
3-04-04	1000		500	2100	A - D	RA-U2	5,5	0,11
3-05-01	1000		500	2100	B - C	RA-U2	5,5	0,11
3-05-02	1000		500	2100	A - D	RA-U2	5,5	0,11
3-06-01	1500		600	2750	B - C	RA-U2	7,5	0,16
3-06-02	1180		600	2100	B - C	RA-U2	6,0	0,13
3-06-03	1180		600	2100	A - D	RA-U2	6,0	0,13
3-07-01	1000		500	2100	A - D	RA-U2	5,5	0,11
3-08-01	1000		500	2100	A - D	RA-U2	5,5	0,11
3-08-02	1000		500	2100	A - D	RA-U2	5,5	0,11
3-08-03	1000		500	2100	A - D	RA-U2	5,5	0,11
3-09-01	1400		500	3000	A - D	RA-U2	7,0	0,15
3-09-02	1400		500	3000	A - D	RA-U2	7,0	0,15
3-10-01	450		280	1450	C - D	RA-U2	2,5	0,05
3-11-01	310		280	1000	C - D	RA-U2	1,5	0,03
3-12-01	310		280	1000	A - B	RA-U2	1,5	0,03
4-01-01	1750		700	1500	A - D	RA-U2	8,0	0,19
SAMT.	48610							



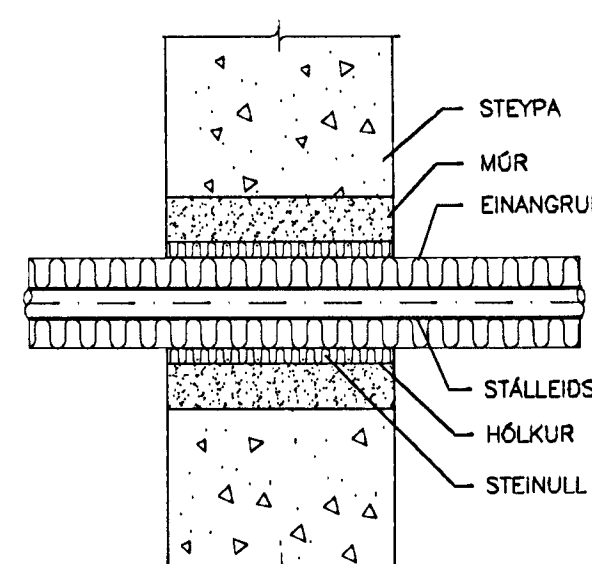
BRUNAPÉTTING Á LEIDSLU GEGNUM STEYPT GÓLF
EKKI Í KVARDA



ÞÉTTING Á LEIDSLU GEGNUM STEYPT GÓLF
EKKI Í KVARDA



BRUNAPÉTTING Á LEIDSLU GEGNUM STEYPTAN VEGG
EKKI Í KVARDA



ÞÉTTING Á LEIDSLU GEGNUM STEYPTAN VEGG
EKKI Í KVARDA

ÓTGÁFUERILL			
NÚMÉR:	DAGS:	SKÝRINGAR:	HANNAÐ:
B1	14.11.00	BYGGINGARTEIKNING	BB

DAGS- UNDRISKRIFAR: NAFN OG KT. SAMRÆMINGARHÖNNUNAR:
UNDRISKRIF SAMRÆMINGARHÖNNUNAR:

ÖLL AFRÖT OG AFRITUN TEIKNINGAR, AD HÉUTA EDA HÉLDO, ER HAD SKRIFLEGU LEYFI HÖFUNDA.
hönnun hf SIDUMGLA 1 · 10B REYKJAVIK
Sími: 510 4000 · FAX: 510 4001
VERKFRÆDISTOFA NETFANG: honnun@honnun.is
ADILAR AD FRV

HEITI VERKS:
FJARDARGATA 9
HAFNARFIRÐI Samþykkt þann 23. NOV. 2007
HEITI TEIKNINGAR:
HITAKERFI OFNASKRÁ OG SÉRMYNDIR
Byggingafultráðinn í Hafnarfirði
E.Þ. Sigurbjartur Haldrupsson

MELI:	TEIKNAD:	GEYMSLUNUMER:	VNR:
	BB		3.151.206
HANNAÐ:	VEIÐFARÐ:	MKV:	NR. TEIKNINGAR:
BB	REI	1/50	
DAGS- UNDRISKRIFAR:	NAFN OG KT. HÖNNUNAR:		P407
HÖNNUN HF	430572-0169		ÓTGÁFA
UNDRISKRIF HÖNNUNAR:			B1