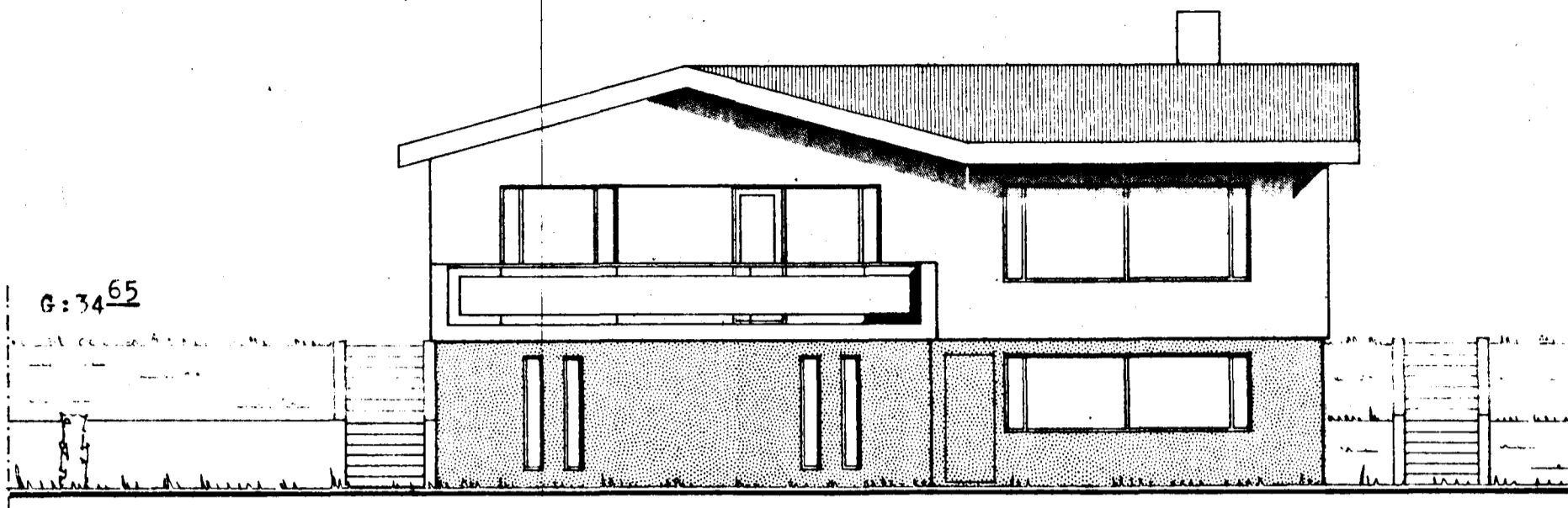
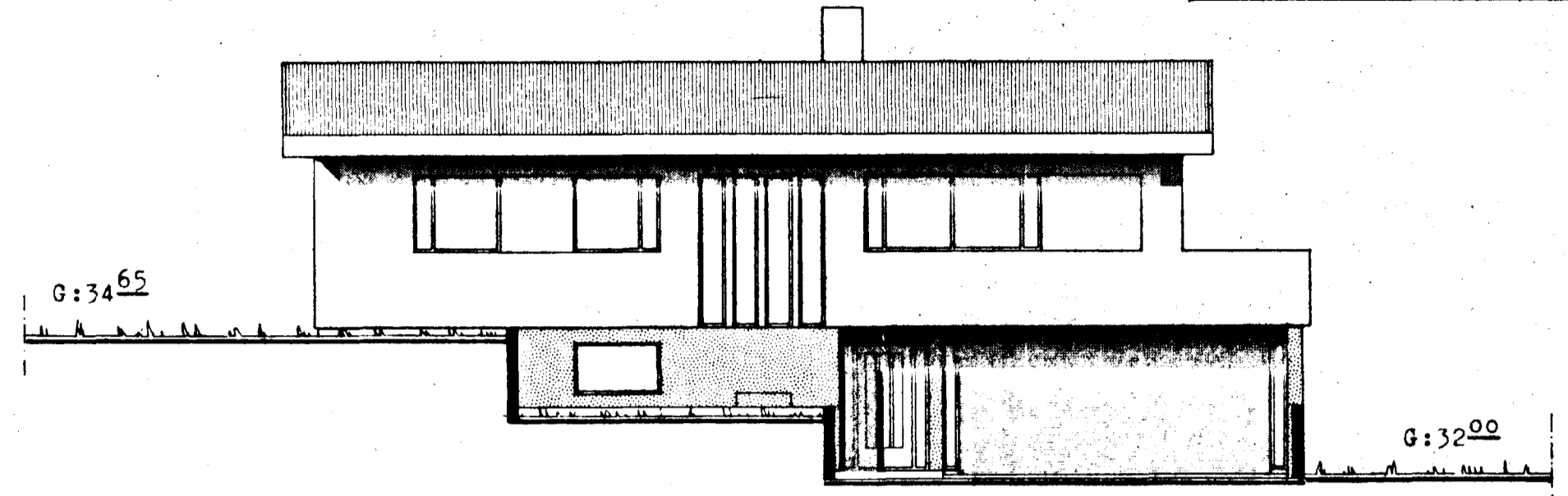


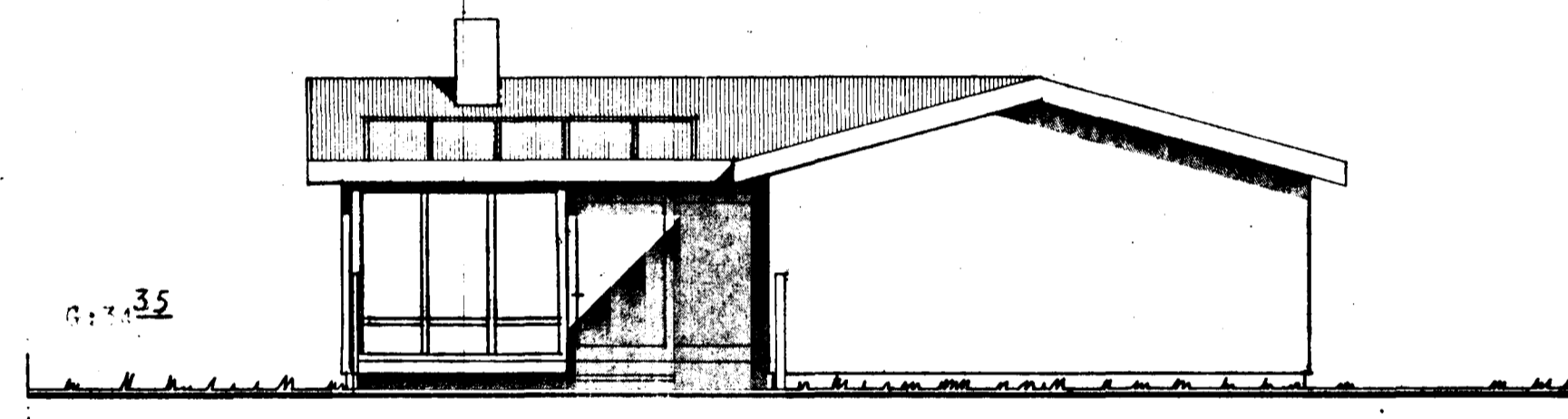
Samþykkt á fundi bygginga-
nefndar þ. 5.15.1989
BYGGINGAFULLTRÚINN
Í HAFNARFIRDI
Ólafur Þorvaldsson



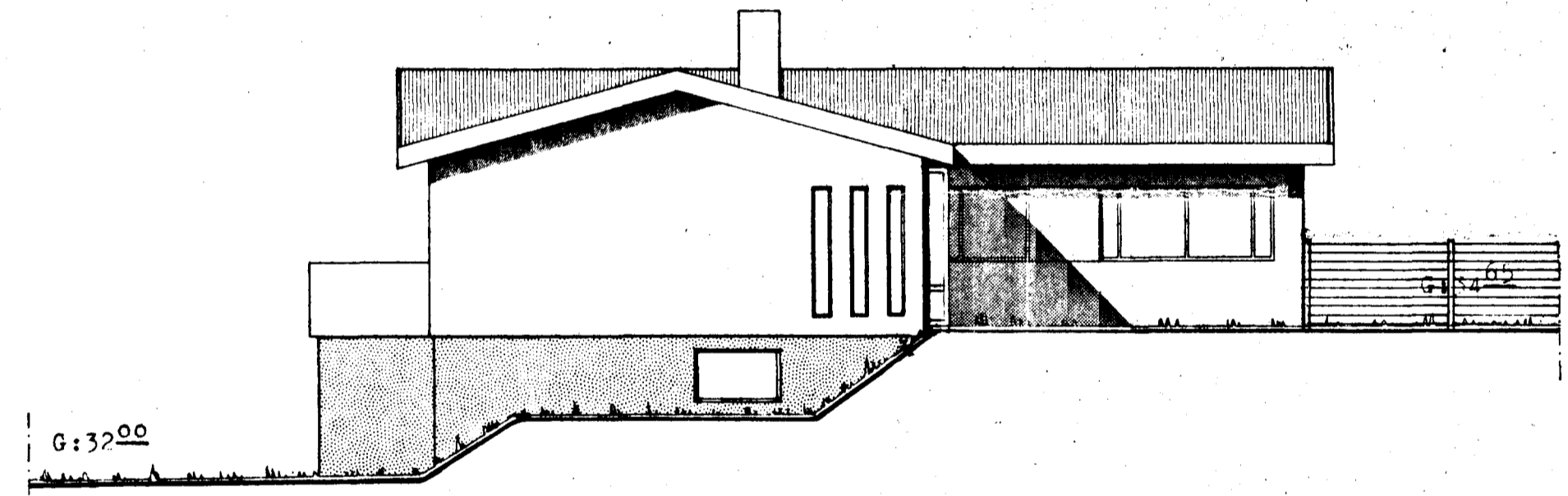
Norðvesturhlíð 1:100



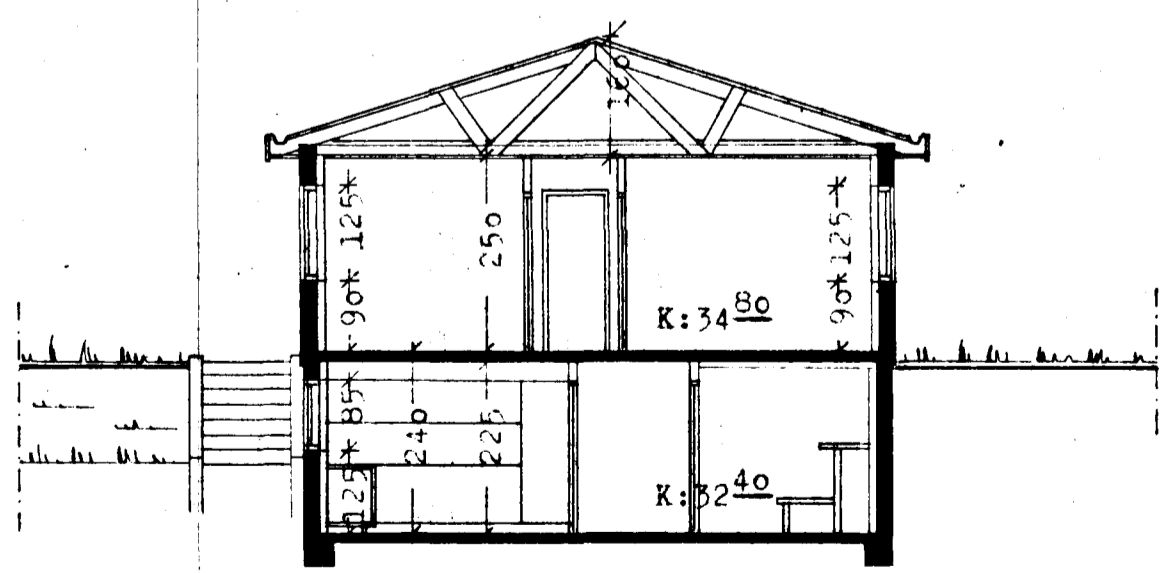
Norðausturhlíð 1:100.



Suðausturgafi 1:100.



Suðvesturgafi 1:100.



Sneiðing A - A 1:100.

Kólnunartölur.
Útveggir, þyngri en 100 kg/m² K. = 0.55
Þak, burðarvirki úr tré. K. = 0.30
Gólf á fyllingu K. = 0.35
Að öðru leiti skal fara eftir IST 66.

Breytt: 18.04.'89.

Einbýlishús Kristjáns Björnssonar, Fjólúhvammi 2, Hafn.	
Teikn.: Útlísteikningar. Sneiðing. Málkv.: 1:100.	
Teikn. no.: 02.	Dagsetn.: Mars 1981.
Vatnar Viðarsson, arkitekt F.A.I., Bollagata 2 Reykjavík. Sími: 29060.	
<i>Datnar Vidarsson.</i>	