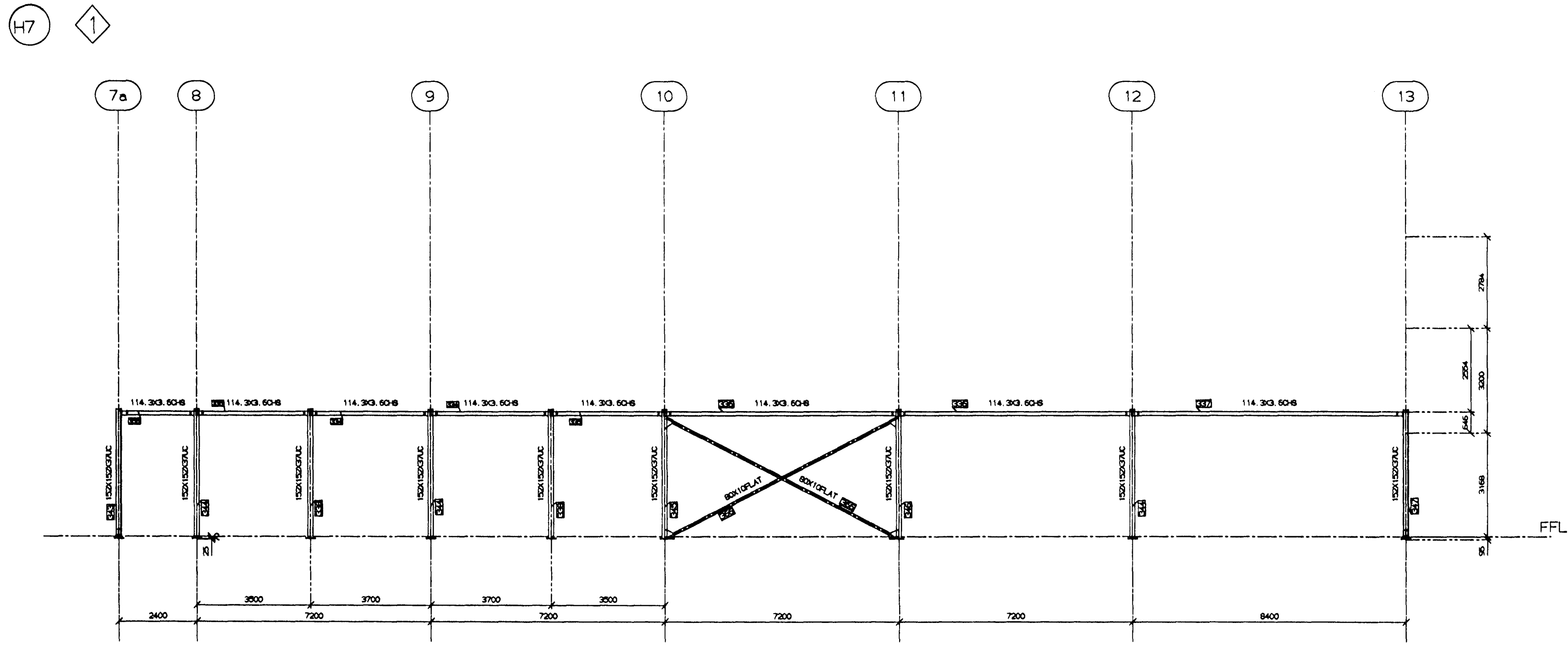
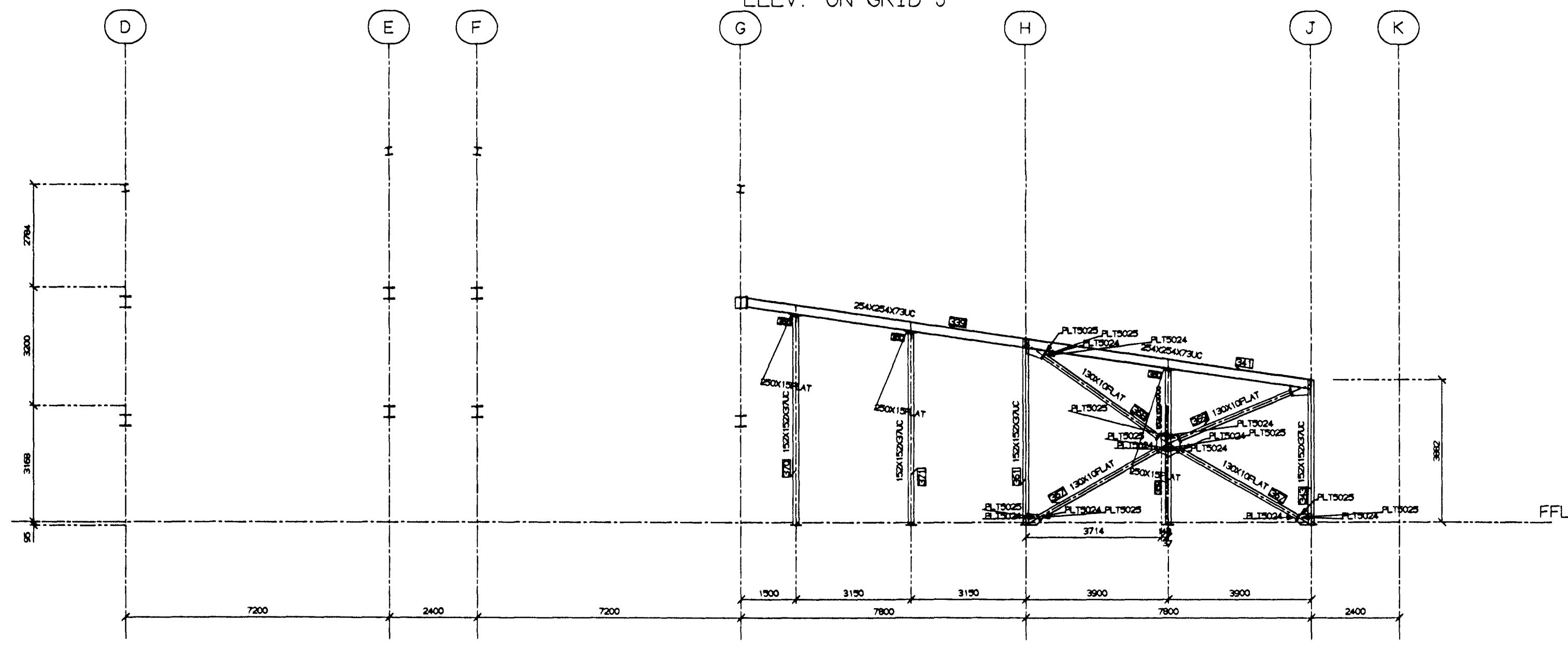


TOLERANCES ARE TO Q. A. DOCUMENT WP2A (UNO.) DO NOT SCALE. WORK TO FIGURED DIMENSIONS ONLY. IF IN DOUBT ASK!

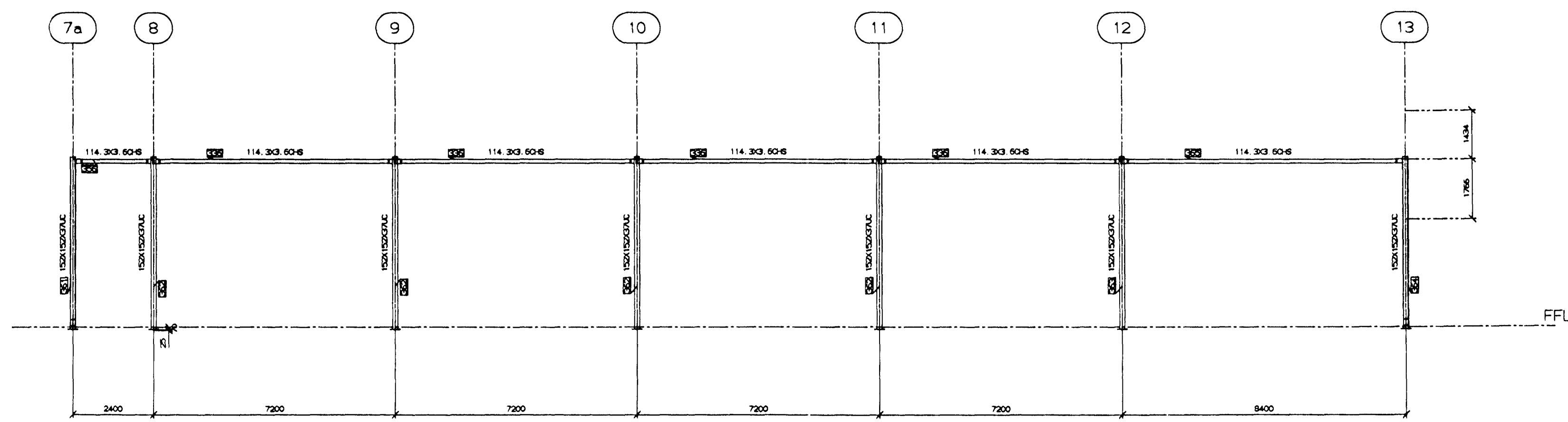
A1



ELEV. ON GRID J



ELEV. ON GRID 7A.



ELEV. ON GRID H

PAINT SPEC : WR95 - EPOXY ZINC RICH PRIMER

Byggingisfulltrúi Hafnarfjarðar  
Afgreidd þann  
19 APR. 1999  
Sigurbjartur Halldórsson

Hafnarfjarðar  
45  
Halldórsson

<b>VBV Verkfræðistofa</b> <b>Bjarna Viðarssonar ehf</b> <small>Sölvumúla 20, 108 Hv. sími 588 82 88, fax 588 08 88</small>		IDNSKÓLINN   HAFNARFIRÐI FLATAHRAUNI 12			
Samþykkt: <i>[Signature]</i> 110261-777		BURÐARVRKI STÁLVRKI			
Verknr. ISKH		Dags. 13.04.1999			
REV	DATE	DESCRIPTION	REV	DATE	DESCRIPTION
CLIENT: FORMACO - VBV		CONTRACT No. 19007		DRG No.	REV.
DRAWN No 1		DATE	CHECKED	DATE	REV.
		29/03/99			GA10