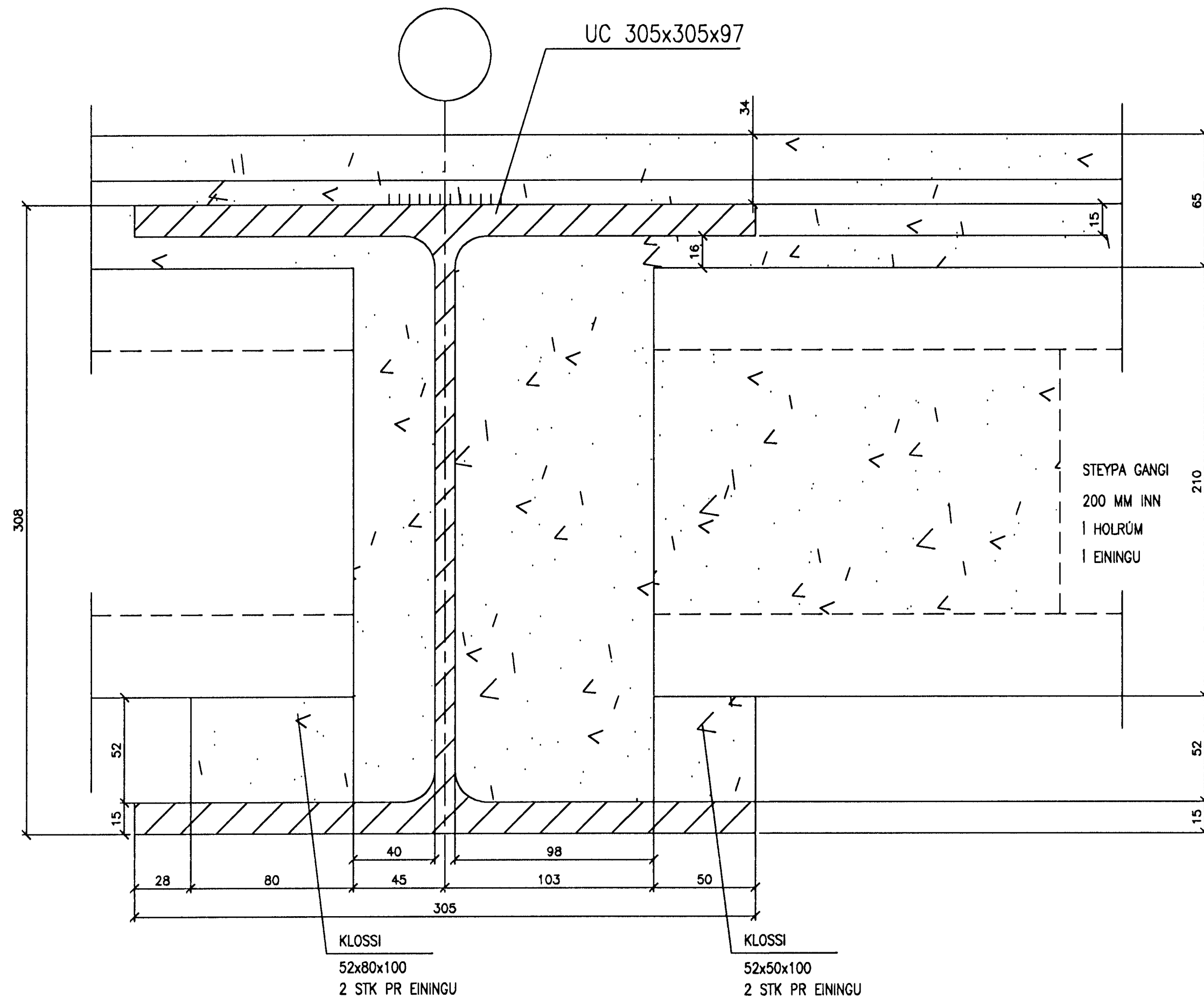
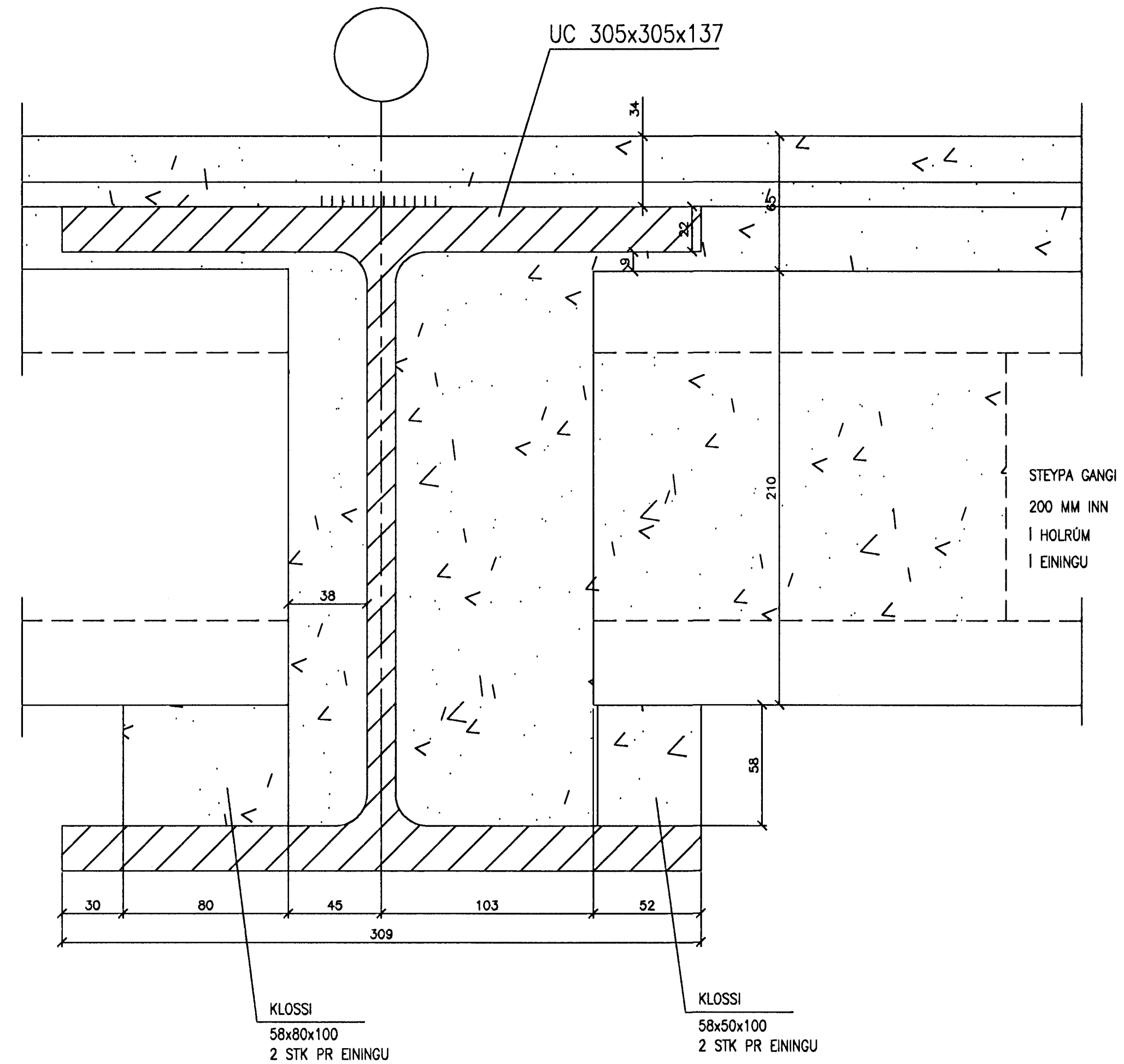


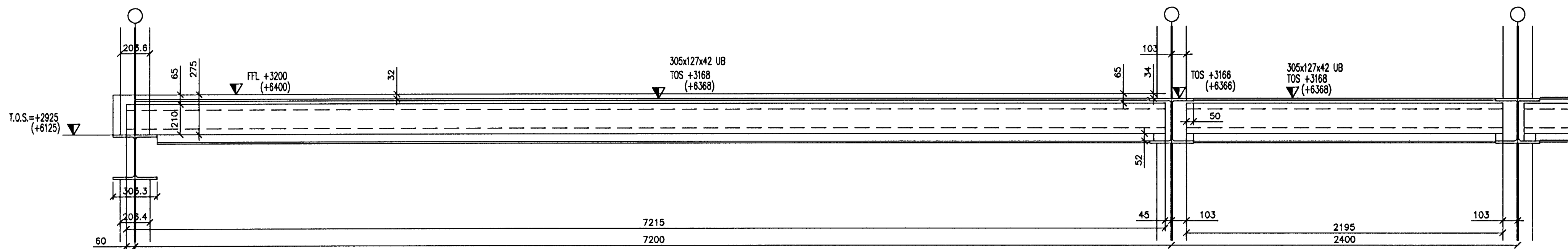
SNID MÓDULLINU F - 1:2
 VID STÁLBITA 305x350x97 UC



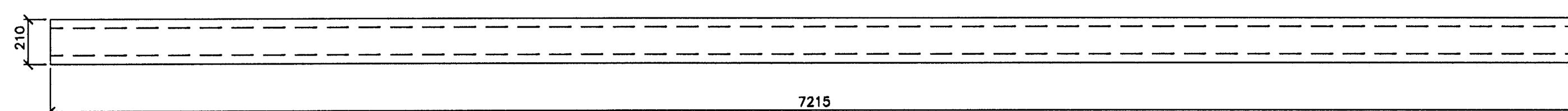
SNID MÓDULLINU F - 1:2
 VID STÁLBITA 305x350x137 UC



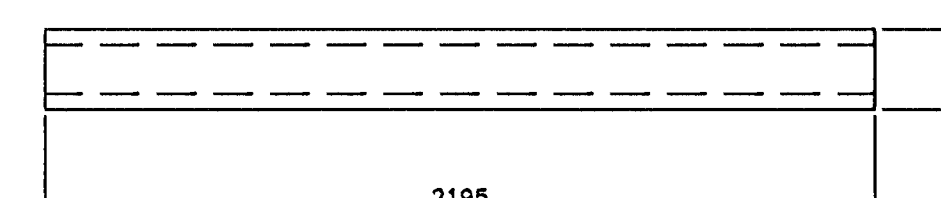
SNID Í EININGAR OG STÁLBITA M1:20



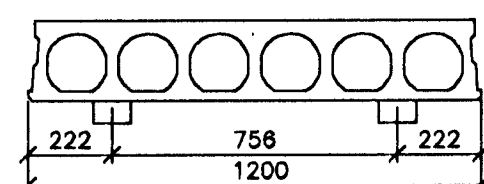
LENGRI HOLPLÖTUEININGAR M1:20



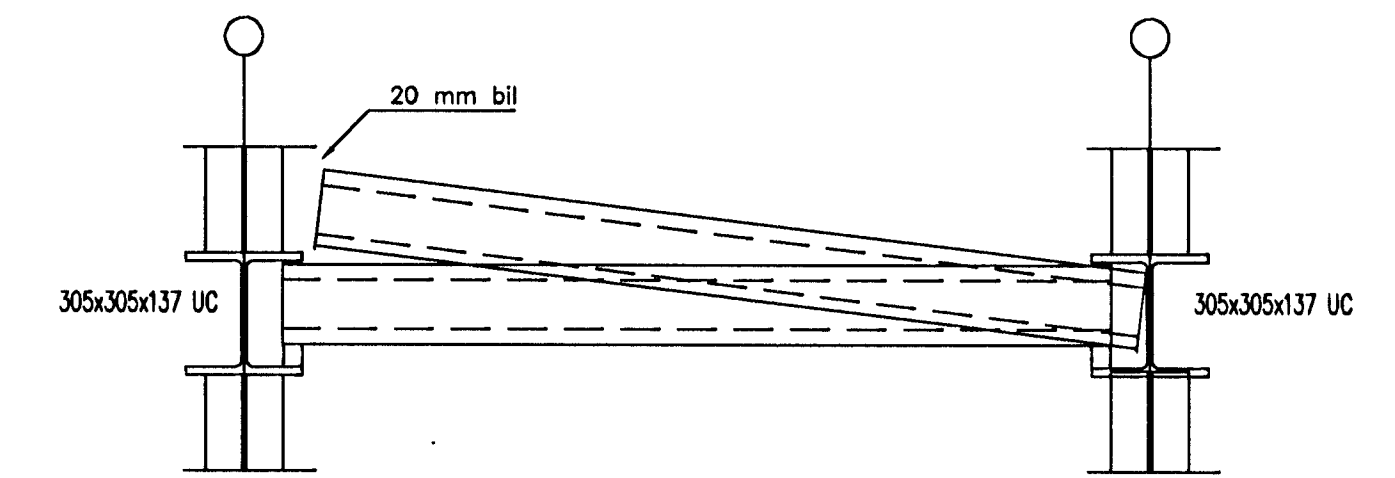
STYTTRI HOLPLÖTUEININGAR M1:20



STAÐSETNING UNDIRLAGSKLOSSA M1:20

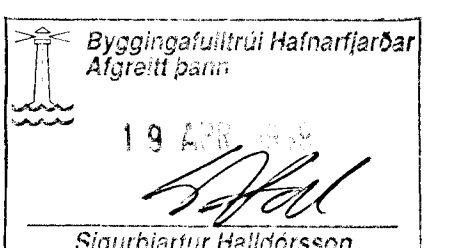


NIDURLÖGN STYTTRI EININGA M1:20



SKÝRINGAR

ÁLAG Á HOLPLÖTUR: _____
 EIGNÞUNGI _____ 5.9 kN/m²
 MIDAD VID HOLPLÖTU OG
 RAUFARSTEYPU 2.6 kN/m²
 GRUNNGILDI NOTÁLAGS _____ 4.0 kN/m²
 Grunnildri notálaga margfaldað með viðeigandi
 öryggisstuðli í brotmarkaðstandi



FRAMLEIDANDI ÁBYRGIST STYRKLEIKA, SVIGNUN
 OG ADRAR KRÖFUR SEM GERÐAR ERU TIL
 EININGANNA Í ÍSLENSKUM STÖDLUM OG REGLUGERÐUM

		<p>VBV Verkfræðistofa Bjarna Viðarssonar ehf <small>Sólunila 20, 108 Pvk, sími 588 82 88, fax 588 08 88</small></p>		ÍÐNSKÓLINN Í HAFNARFIRÐI BURÐARVIRKI	
		Mælt: <i>[Handwritten]</i> Hannað: BV Yfirfarið: MA		HOLPLÖTUEININGAR	
Nr:	Dags	Breyting:	Af	T. nr. ISKH_4.01	Mkv. 1:20 1:2
				Dags. 23.03.1999	2-04.01