

Samykkil á fundi byggingar-  
ráðs á d. 11/11/1992  
BYGGINGARLITRÁÐIN  
HAFNARFIRÐI  
*Sigríður Halldórsdóttir*

GLITBERG 5

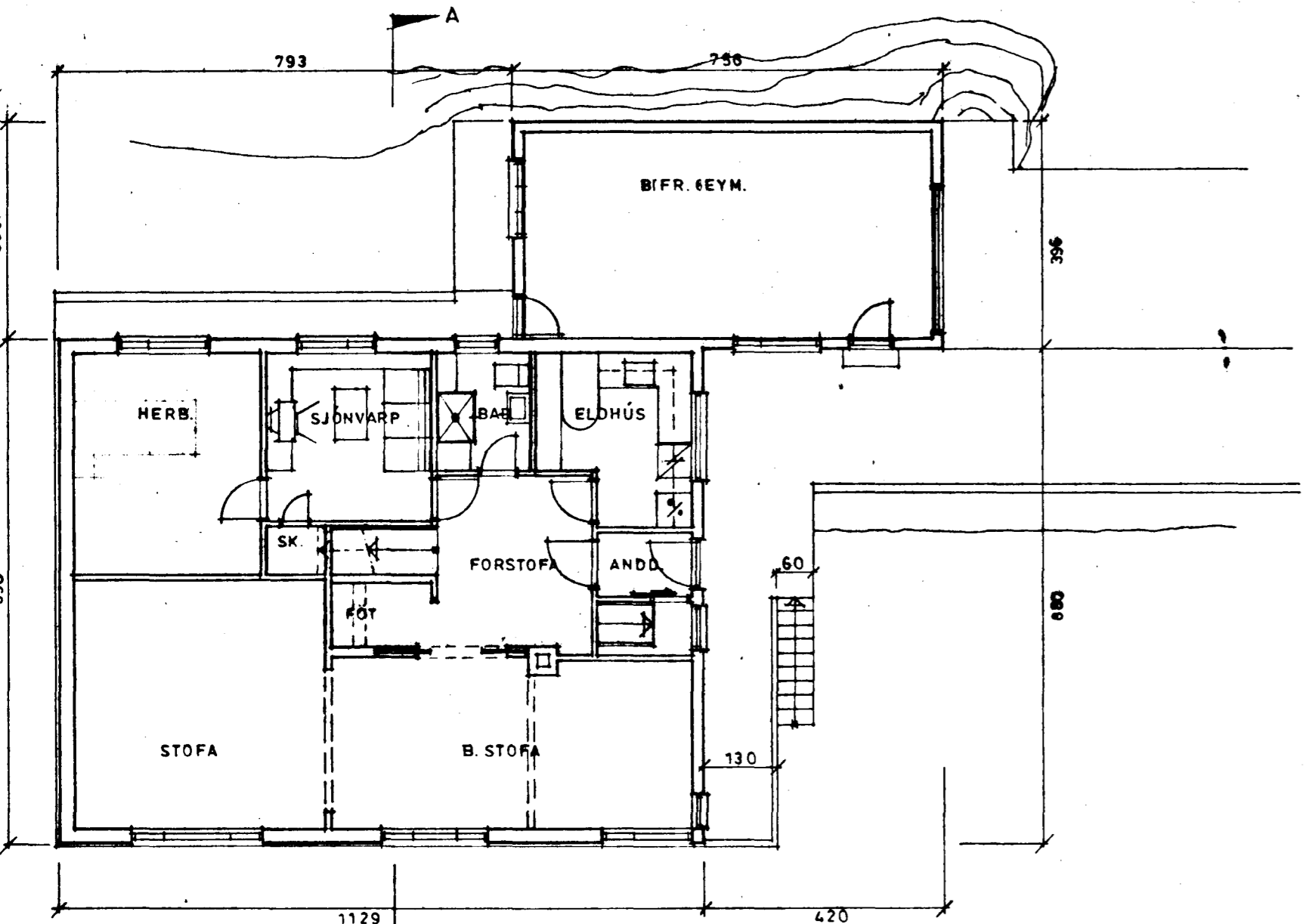
GLITBERG

40.19

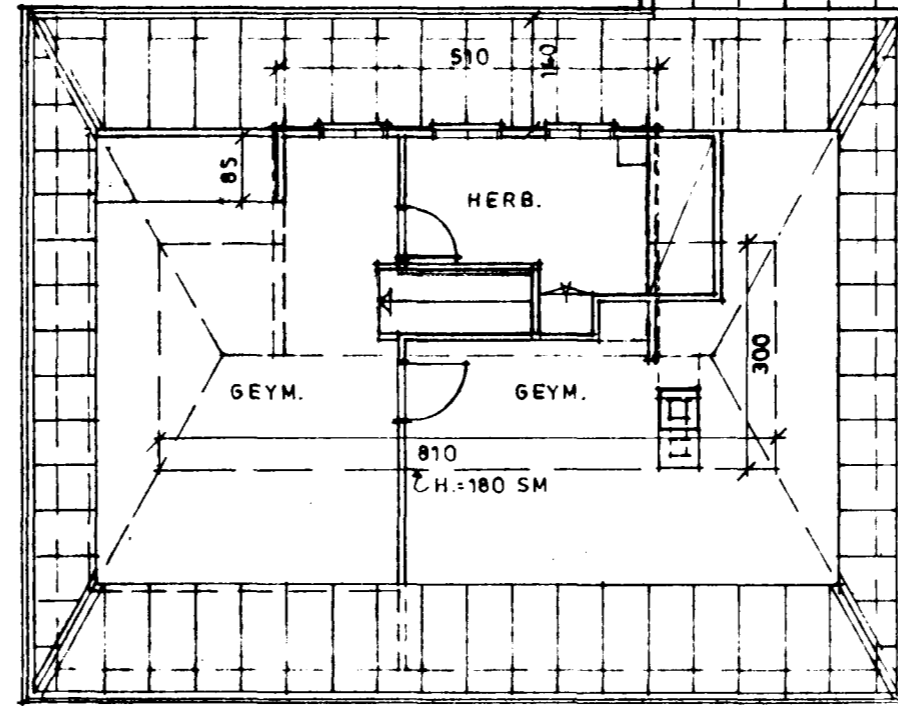
HAMRABERG

R=82.00

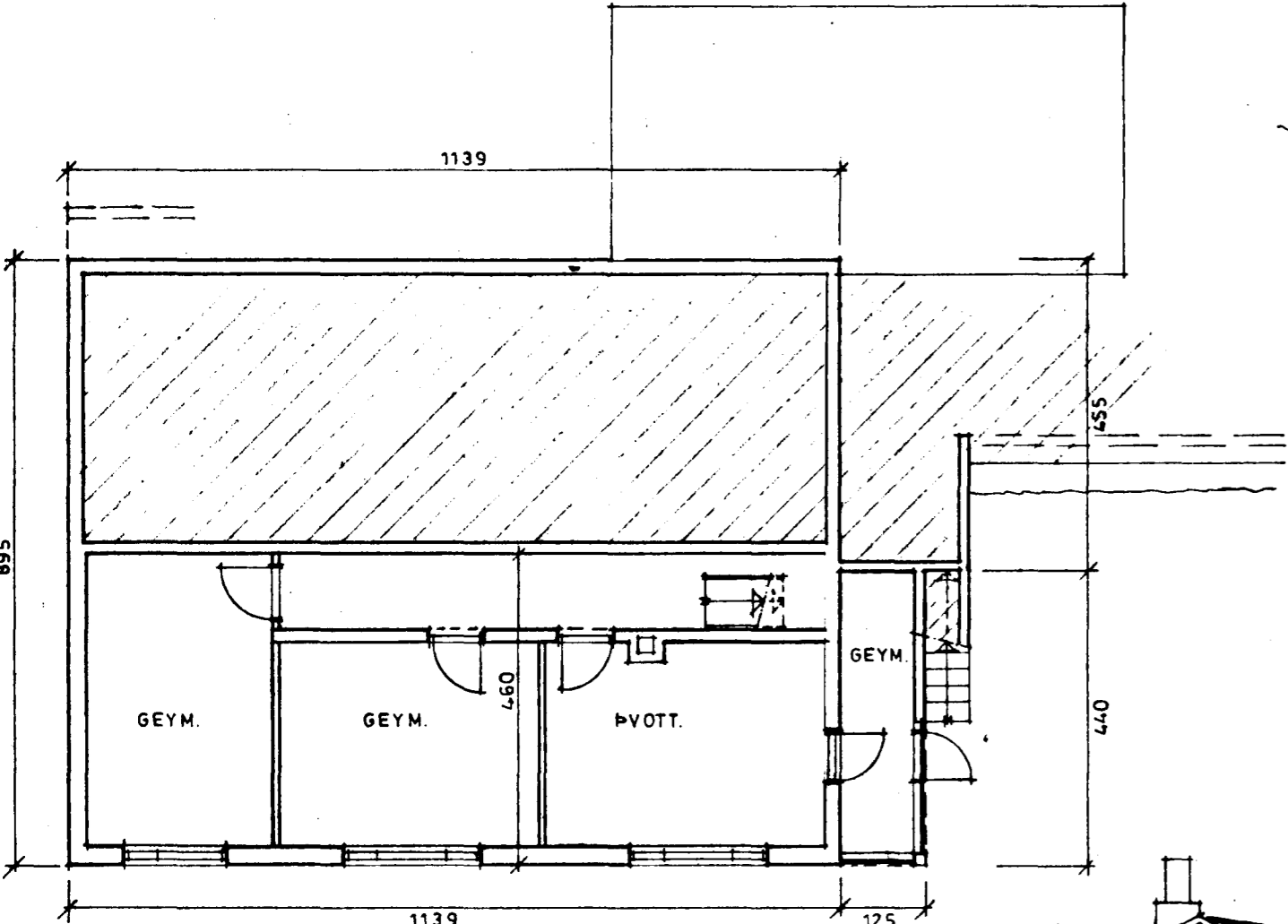
AFST. MYND M.K.V.: 1/500



HÆÐ BR.: 100.5 M<sup>2</sup>  
BIFR. GEYM. BR.: 29.8 M<sup>2</sup>

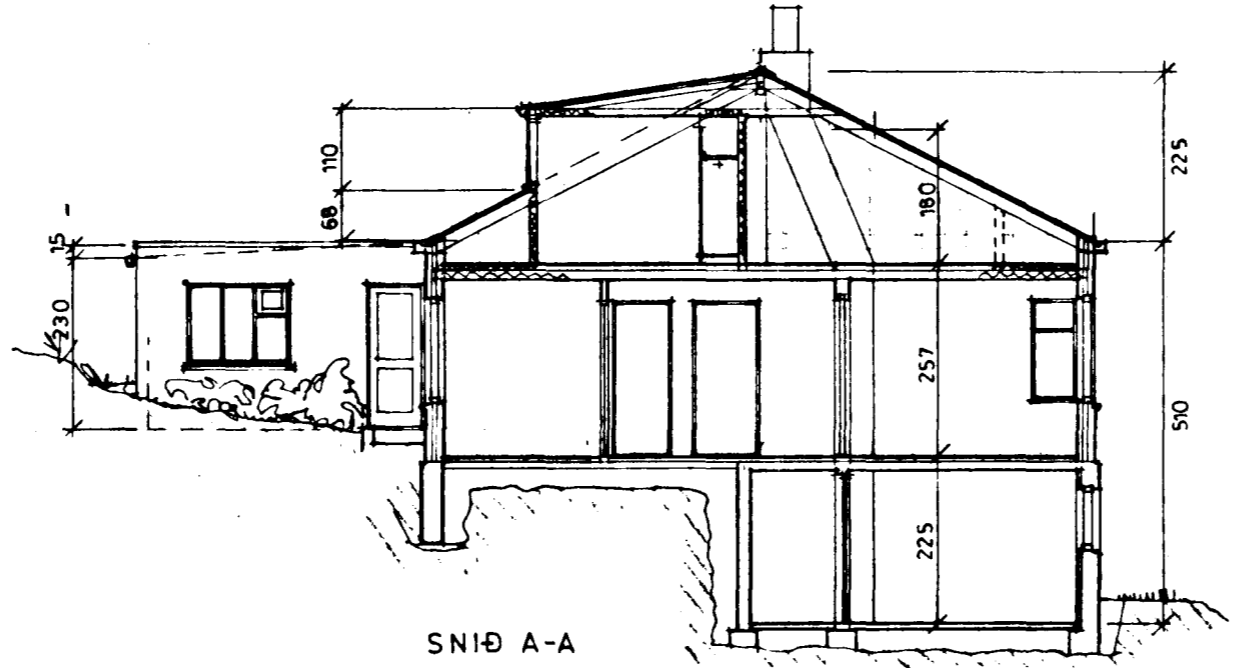


RÍS BR.: 32.0 M<sup>2</sup>

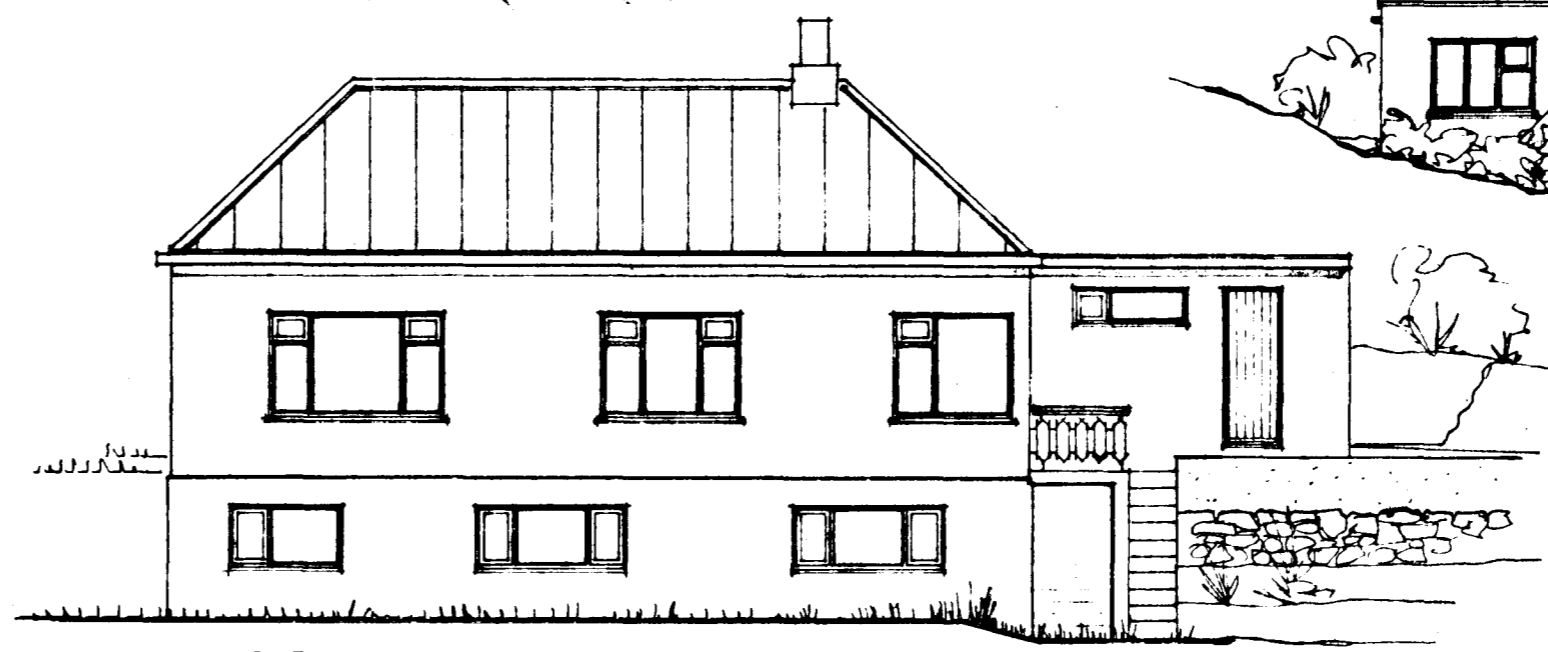


KJALLARI BR.: 57.9 M<sup>2</sup>

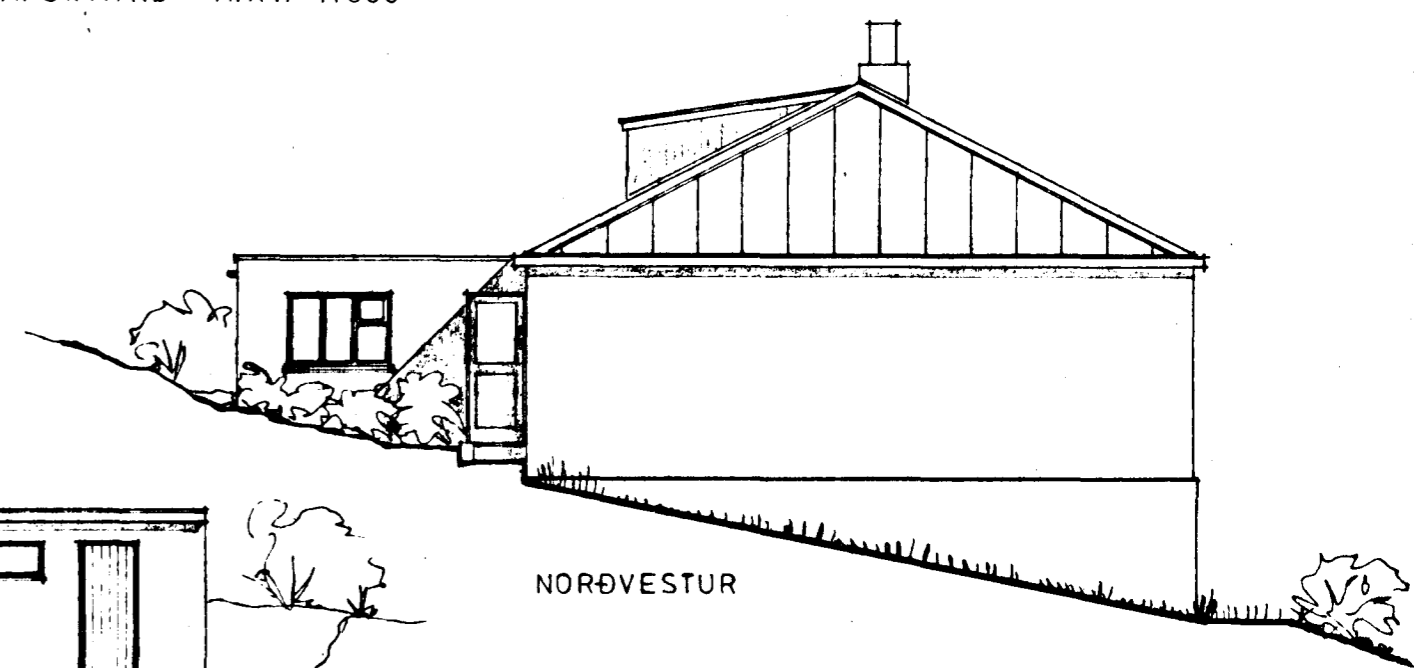
BRÚTTÓ STÆRÐIR:		RÚMMÁL:	
KJALLARI	: 57.9 M <sup>2</sup>		
HÆÐ	: 100.5 M <sup>2</sup>		
RÍS	: 32.0 M <sup>2</sup>		
SAMT.	: 190.4 M <sup>2</sup>	520.0 M <sup>3</sup>	
BIFR. GEYM.	: 29.8 M <sup>2</sup>	71.0 M <sup>3</sup>	



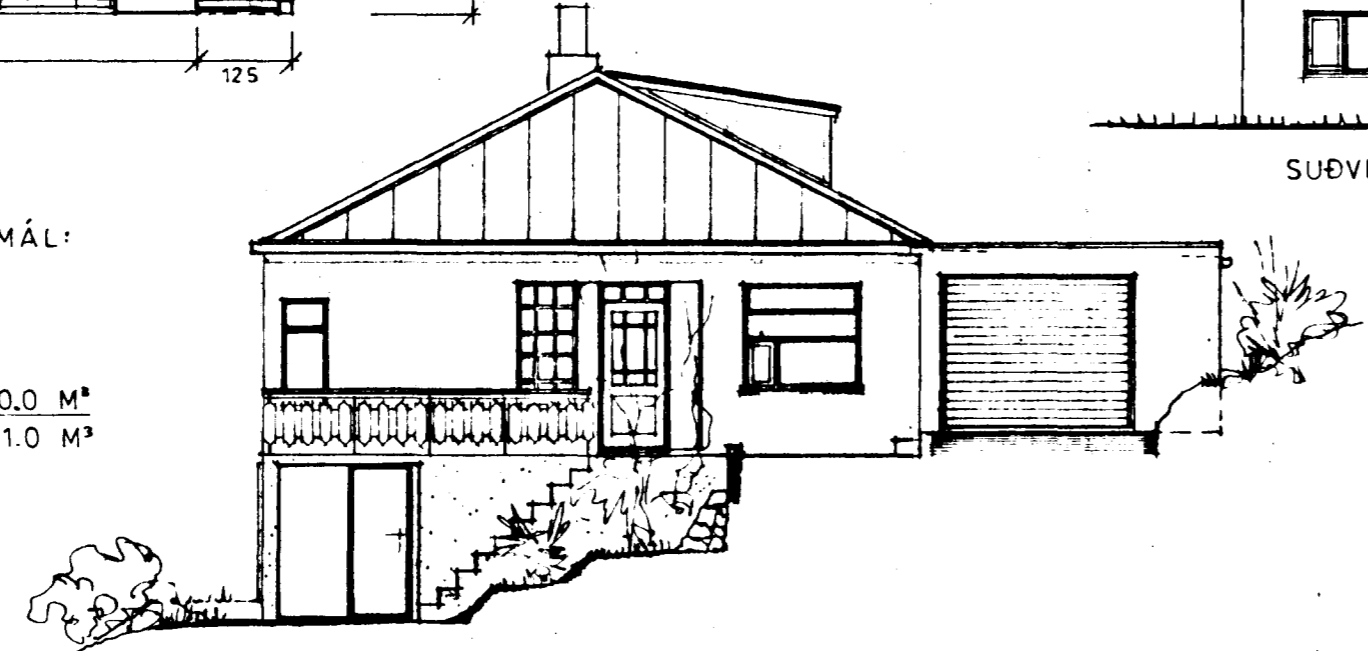
SNID A-A



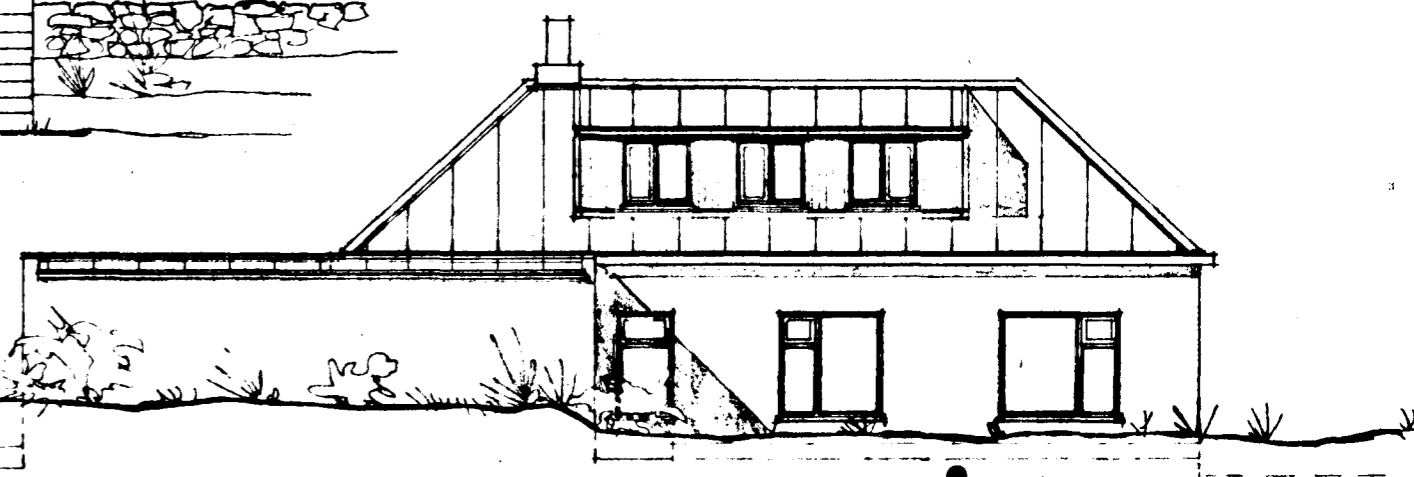
SUÐVESTUR



NORÐVESTUR



SUÐAUSTUR



NORÐAUSTUR

LITLA  
TEIKNISTOFAN  
Reykjavíkurgöti 66, 220 Hafnarfjörð  
*Ólafur Jónsson*