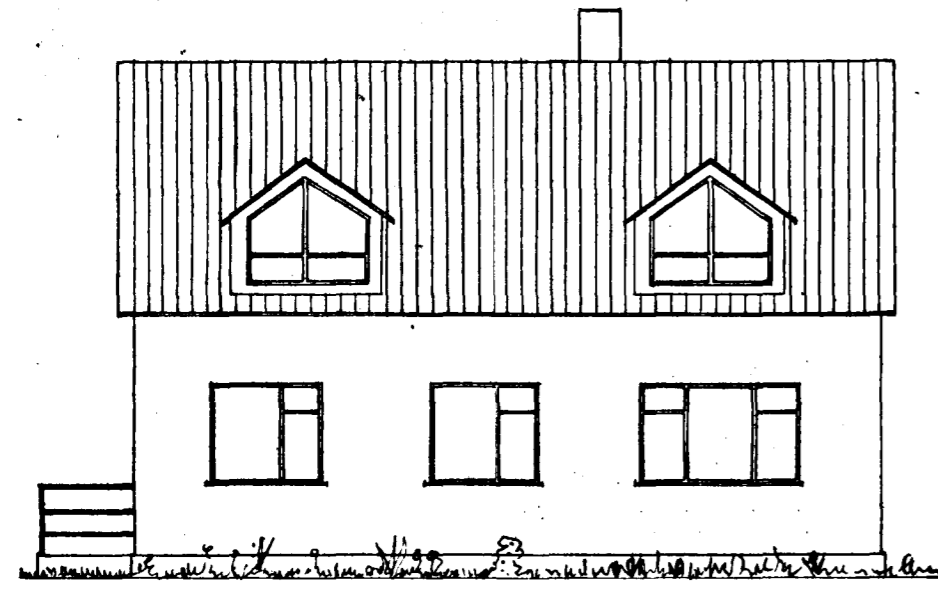


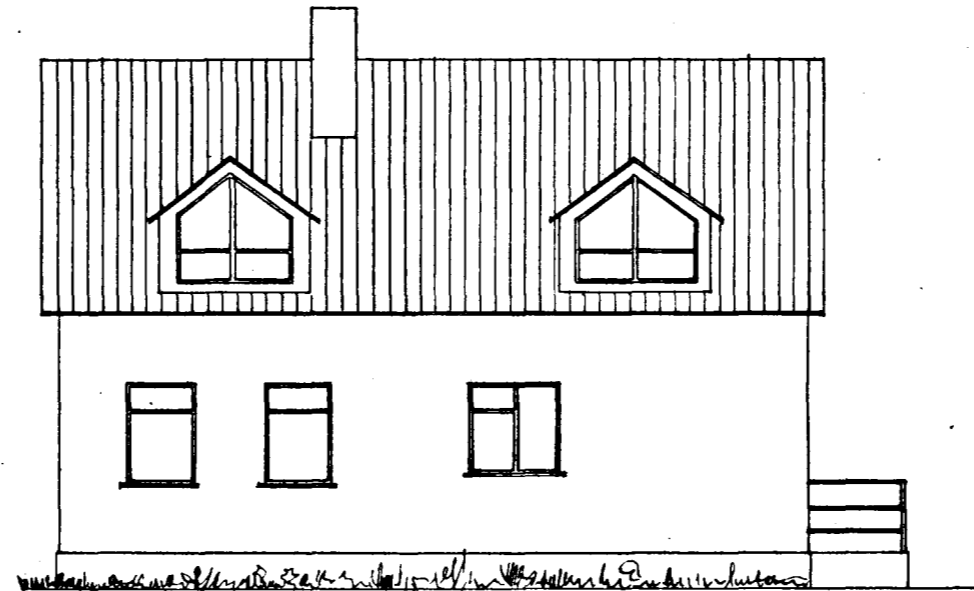
Hús við Grœnakinn nr 26

Eig. Guðjón Sigurfinnsson

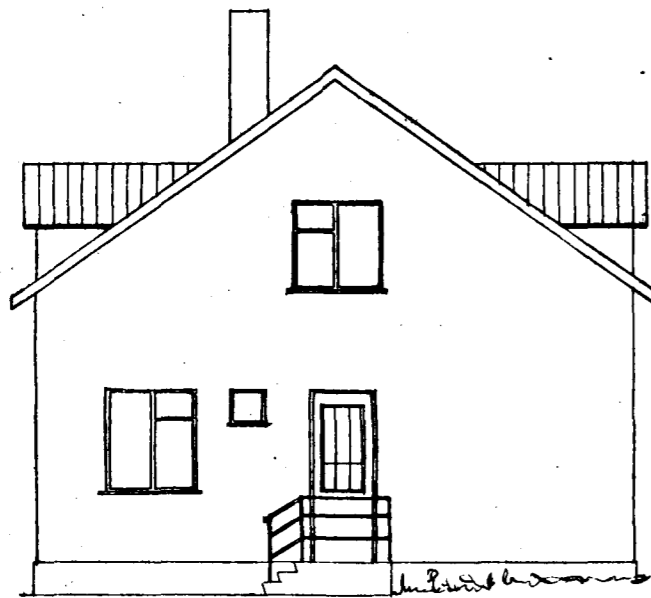
1:100



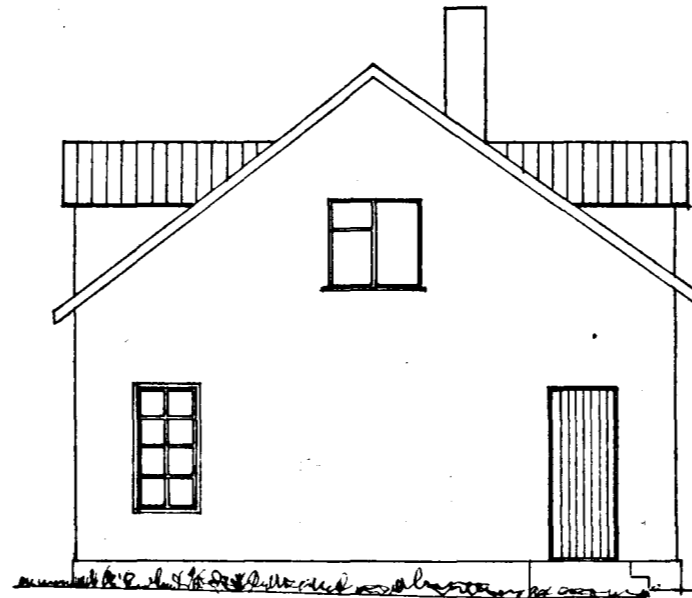
Suðvestur



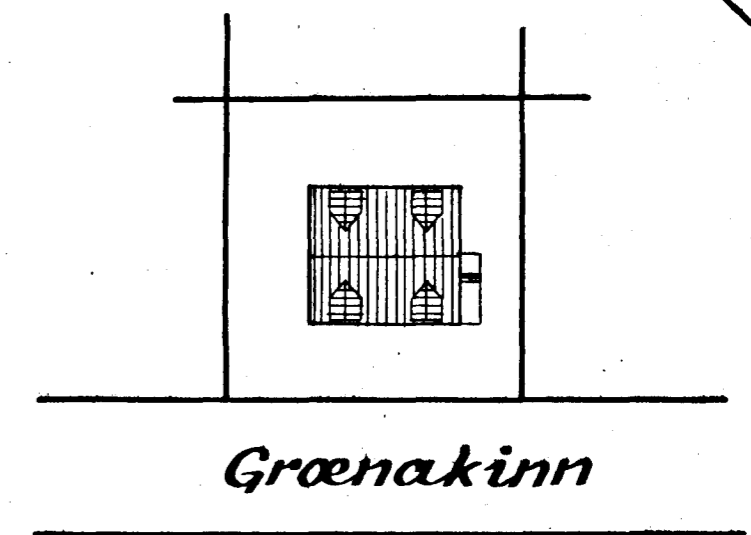
Norðaustur



Norðvestur



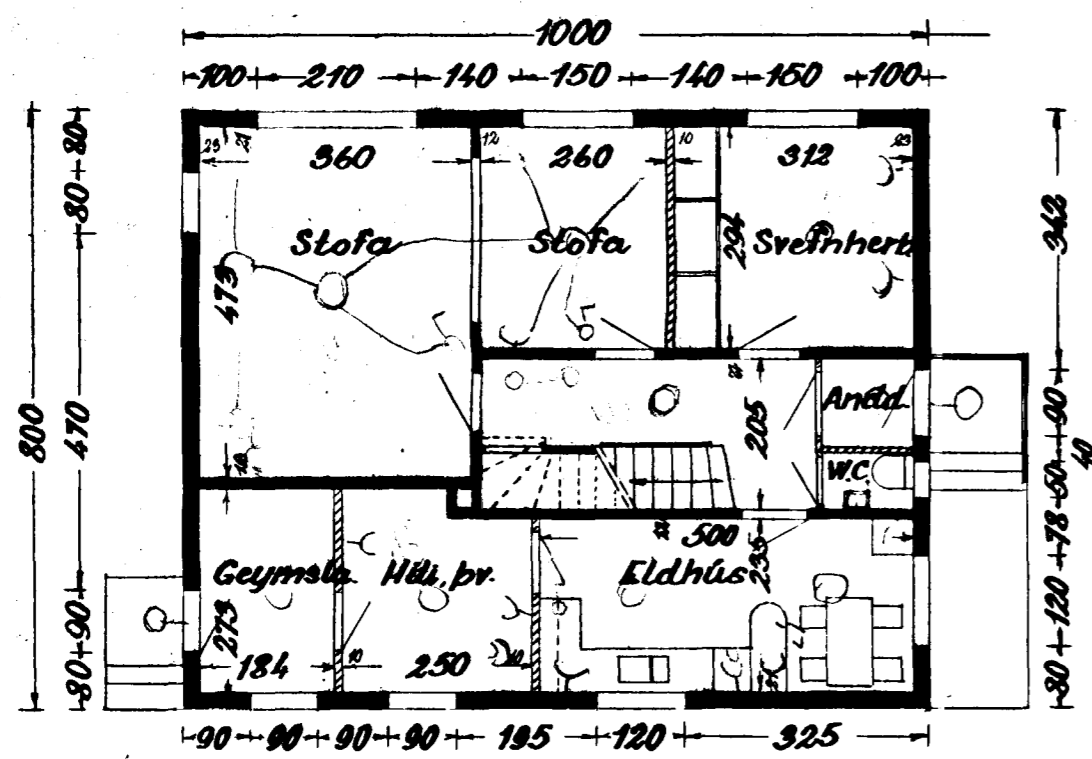
Suðaustur



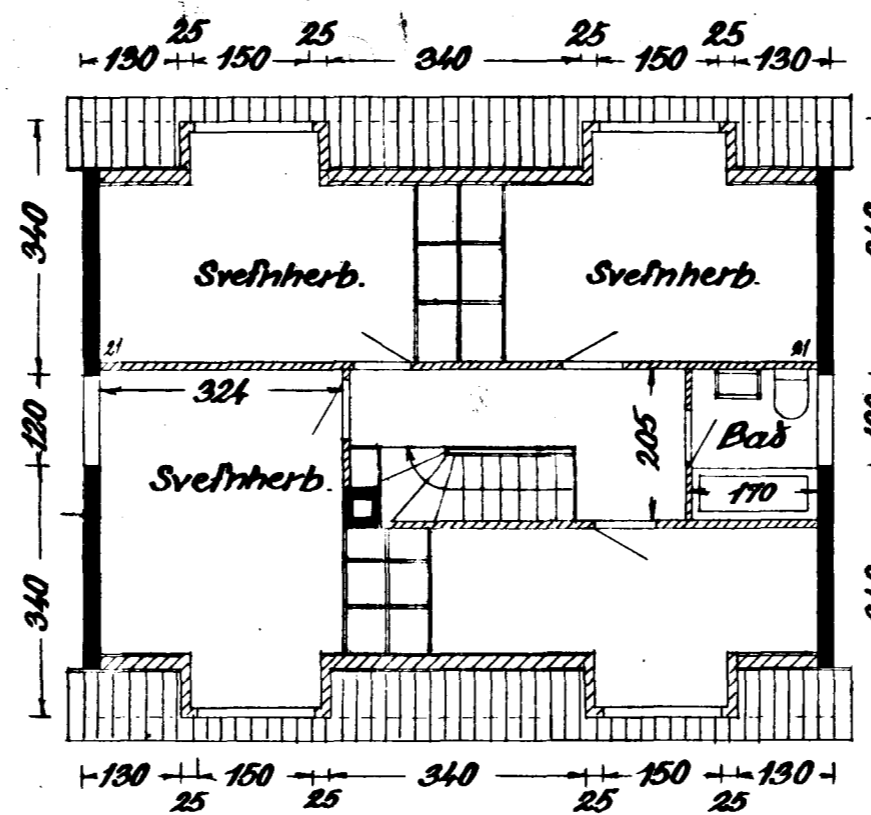
Grœnakinn

Afstöðumynd 1:500

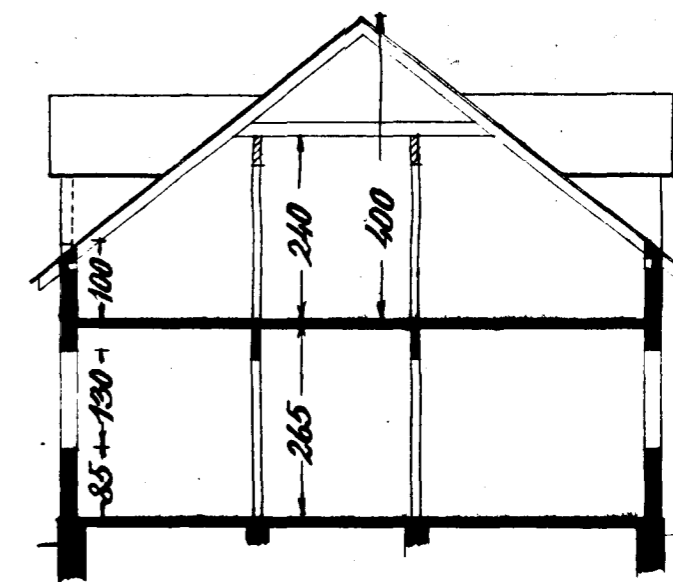
N



Hæð



Þakhöð



Þverskurður

Hasnarf. í júní 1954

Sig. f. Ólafsson