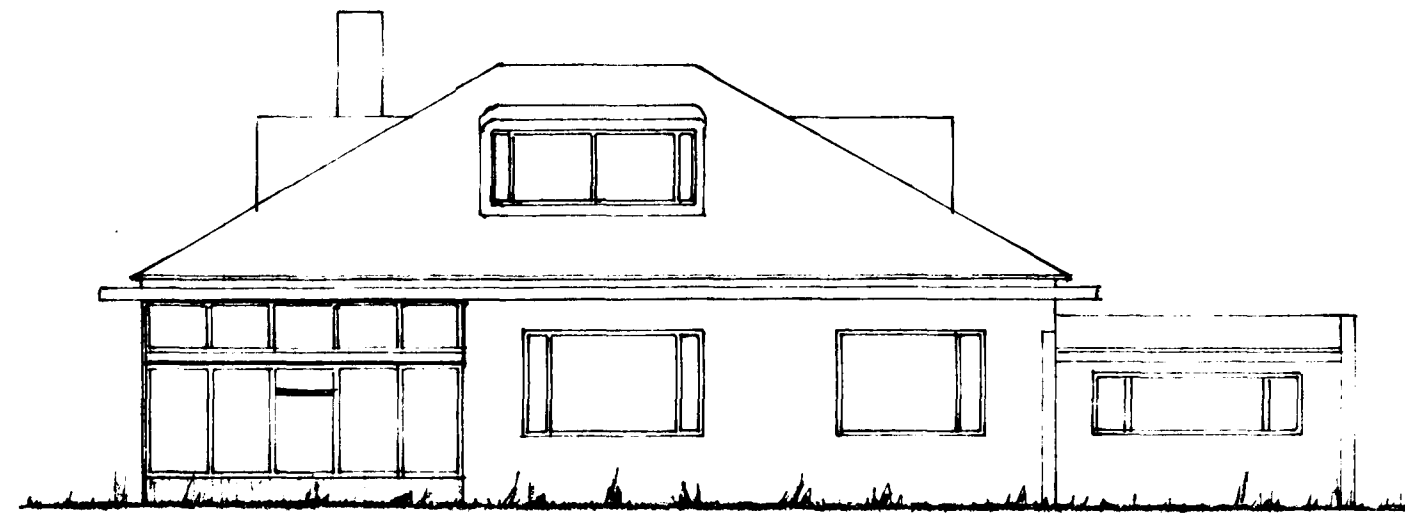
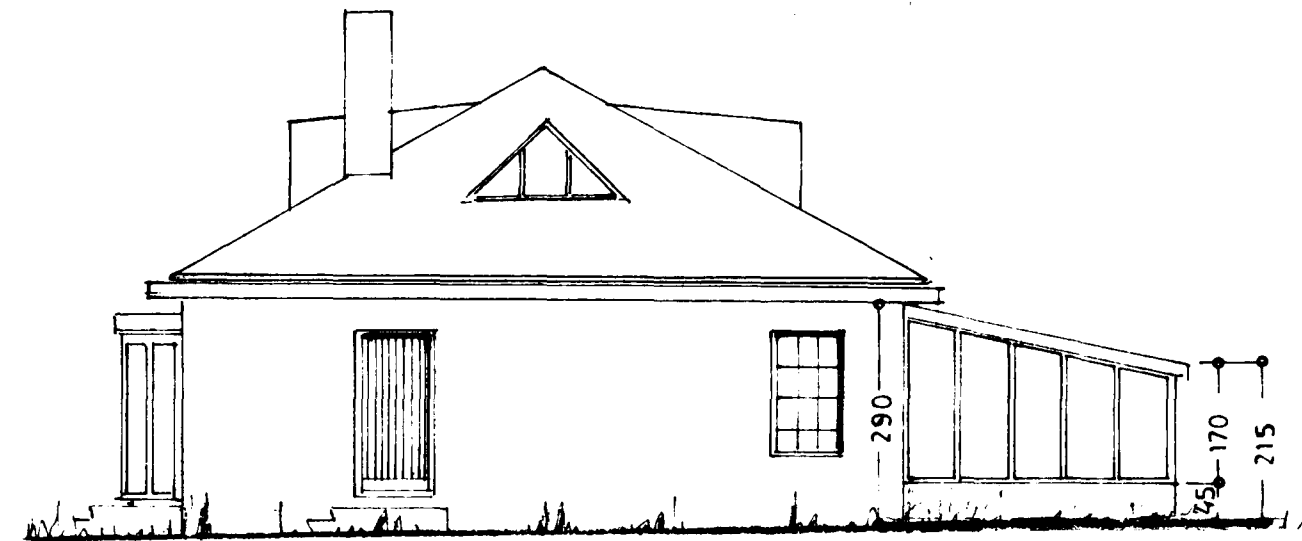


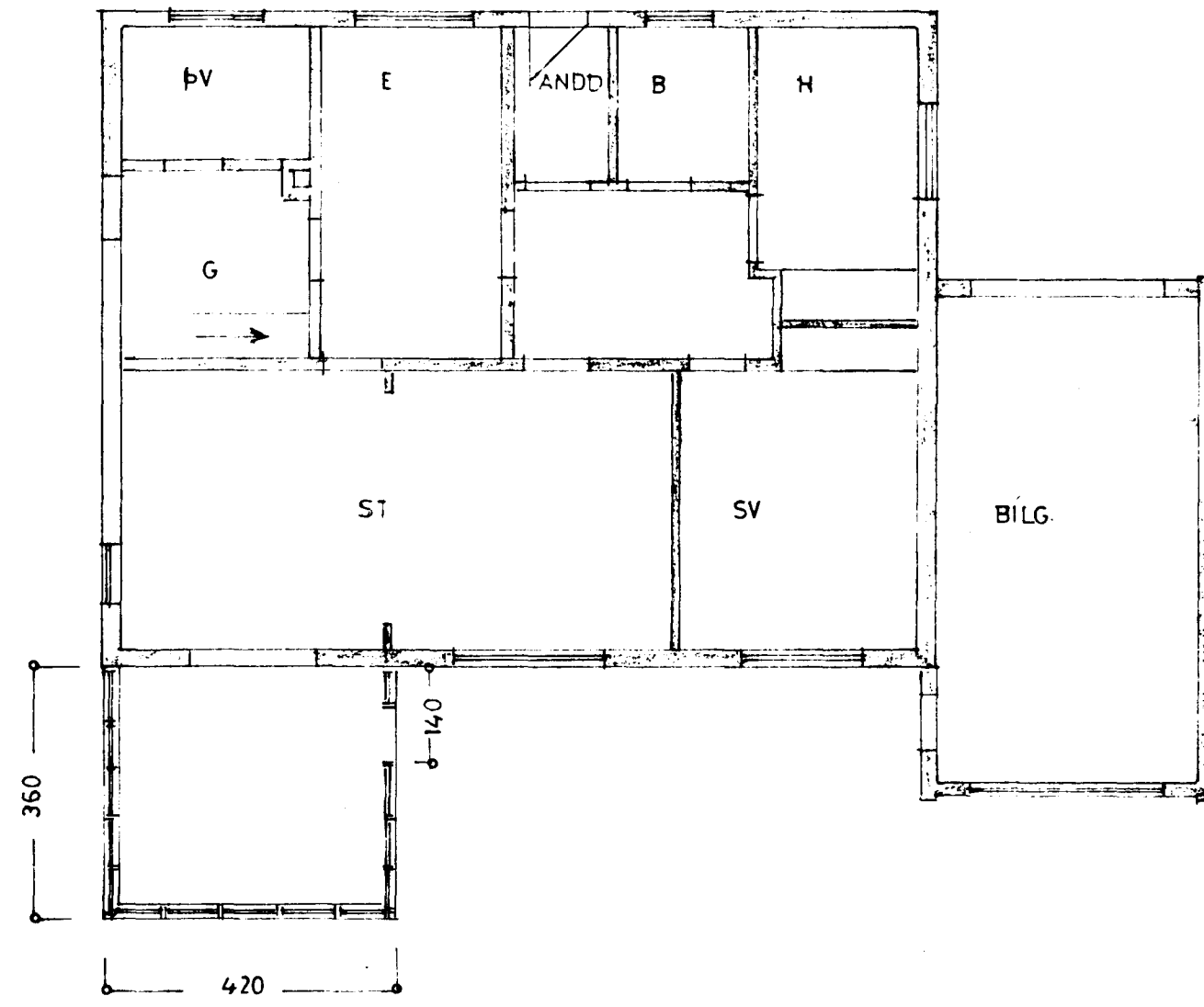
Sambúið á fundi bysinga  
 nefndar þ. 5. / 6. 1985  
 BYGGINGAFULLTRÚNN  
 Í HAFNARFIRÐI  
*Þorvaldur Thórisson*



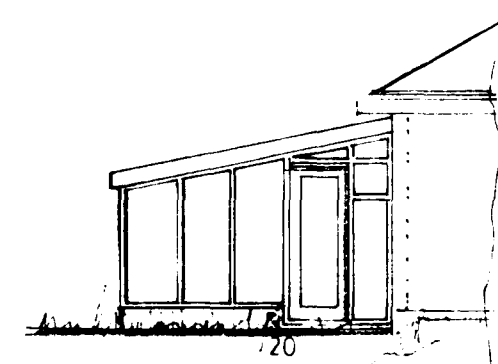
SÚÐVESTUR



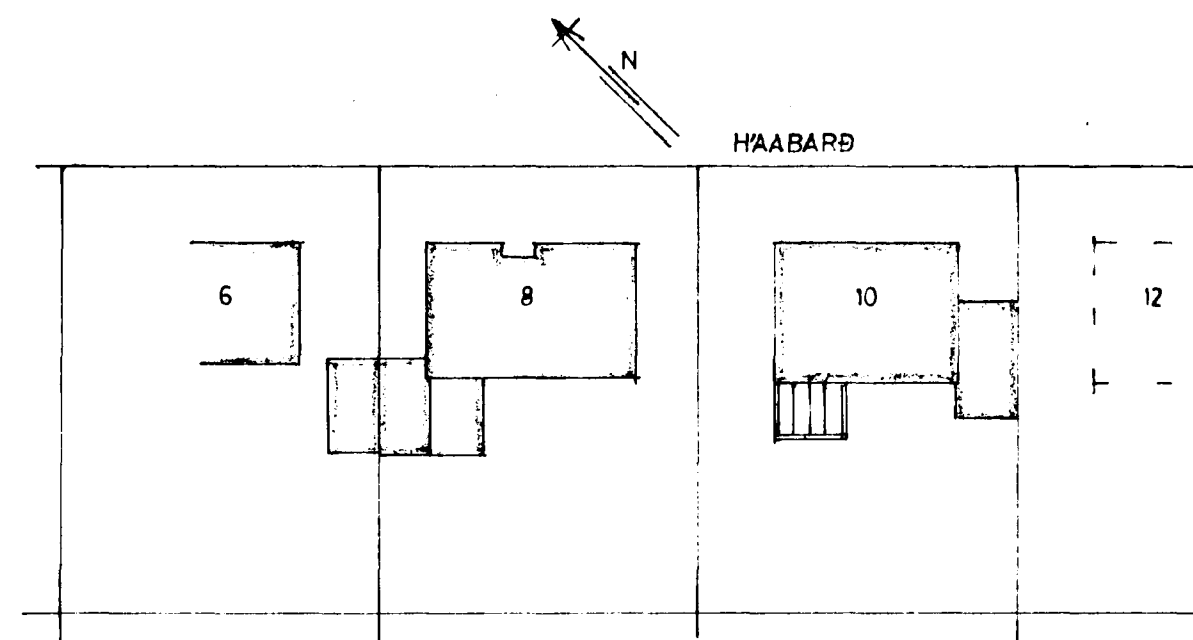
NORÐVESTUR



GRUNNMYND



SÚÐAUSTUR



HÁABARÐ

AFSTÖÐUMYND  
1:500

$$3,6 \times 4,2 = 15,1 \text{ m}^2$$

$$\times 2,53 = 38 \text{ m}^3$$

STÆRÐ:

$$15,1 \text{ m}^2, 38 \text{ m}^3$$

**HÁABARÐ NR 10**

BLÖMASKALI

GRUNNMYND  
ÚTLIT 1:100

AFSTÖÐUMYND 1:500

*Þorvaldur Thórisson*