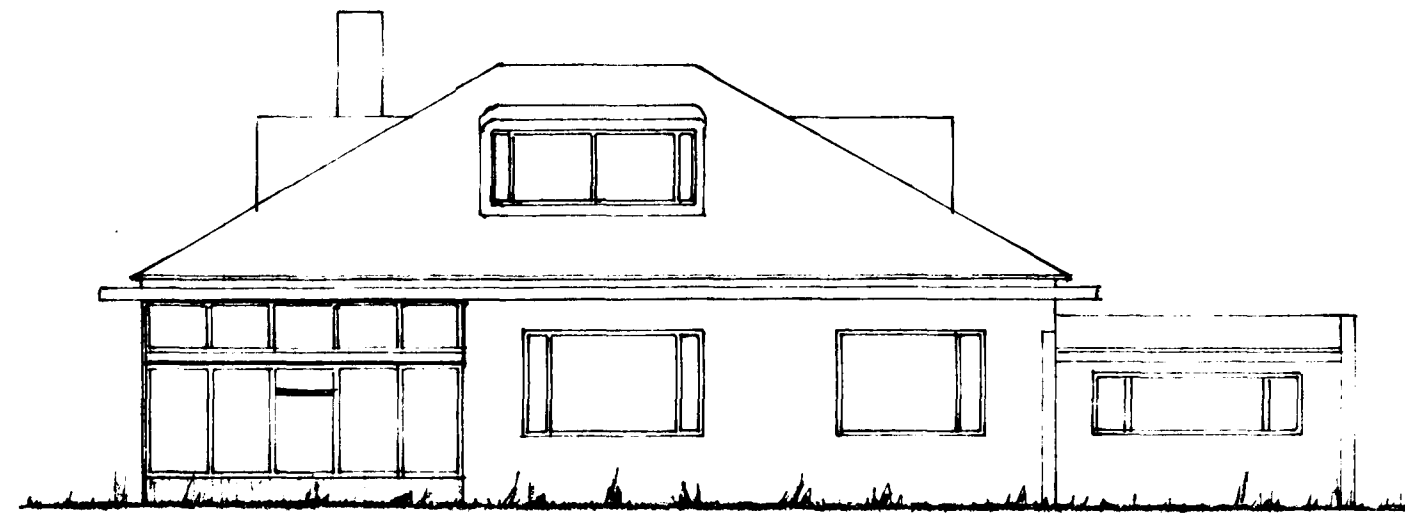
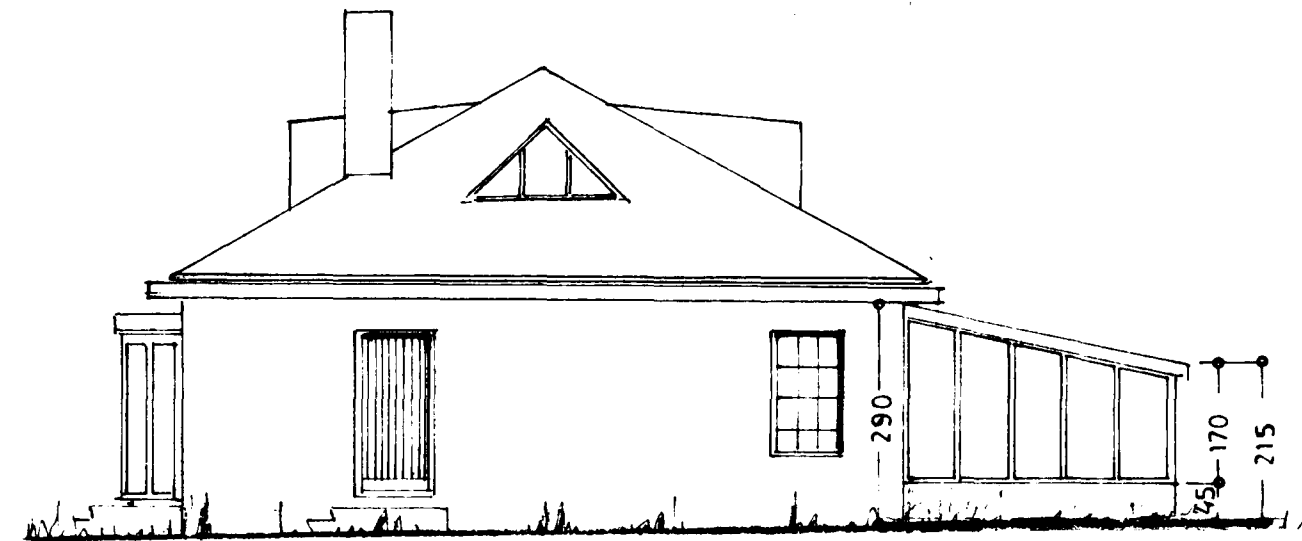


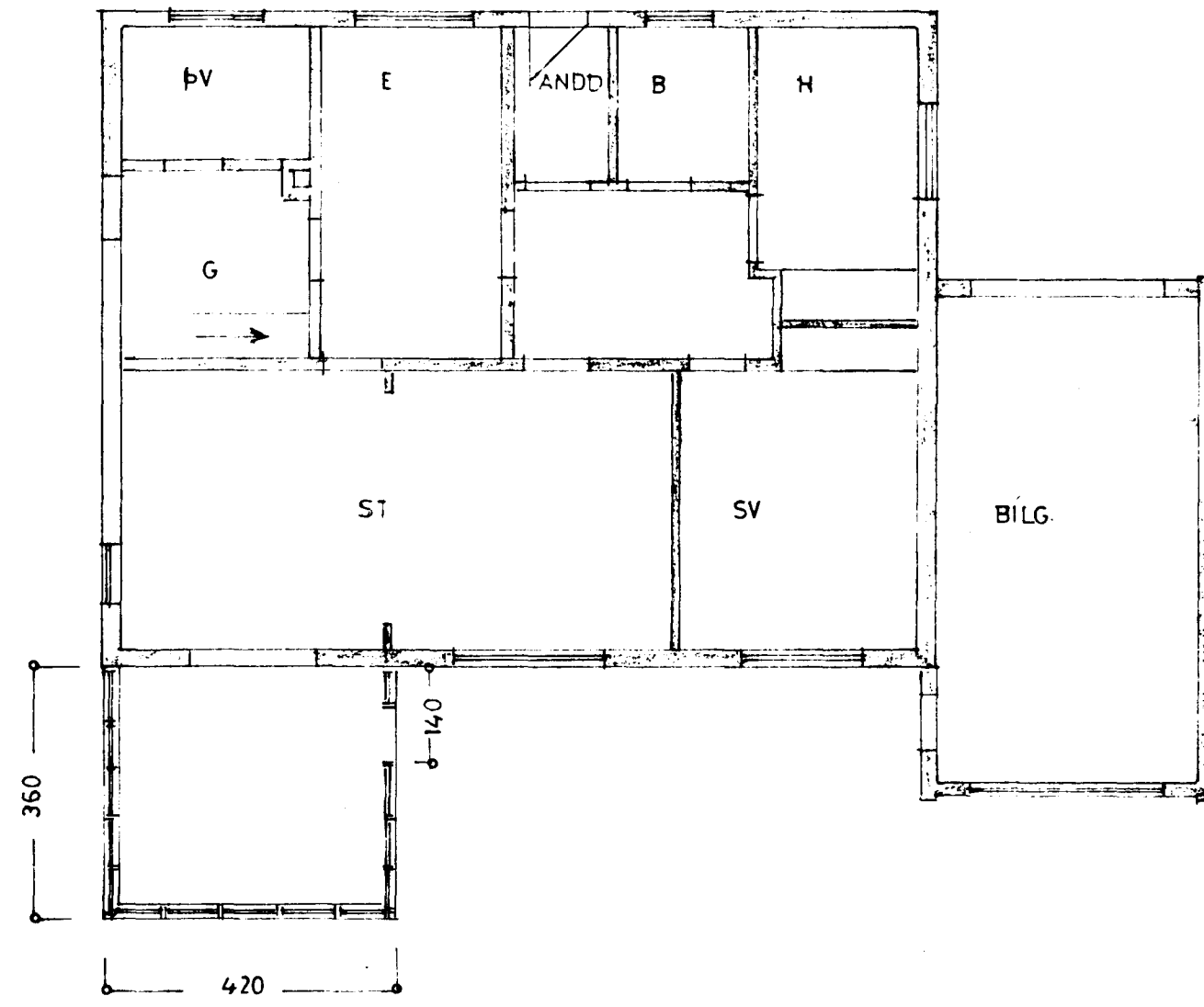
Sambúið á fundi bysinga
 nefndar þ. 5. / 6. 1985
 BYGGINGAVALLTRÚNN
 Í HAFNARFIRÐI
Þorvaldur Thors



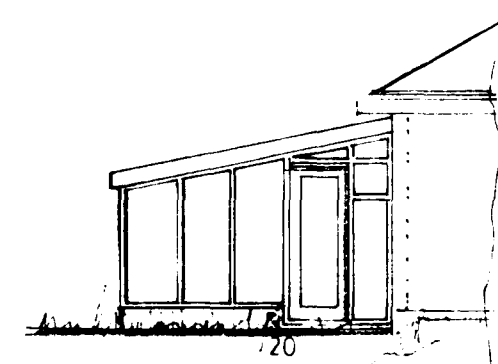
SUVESTUR



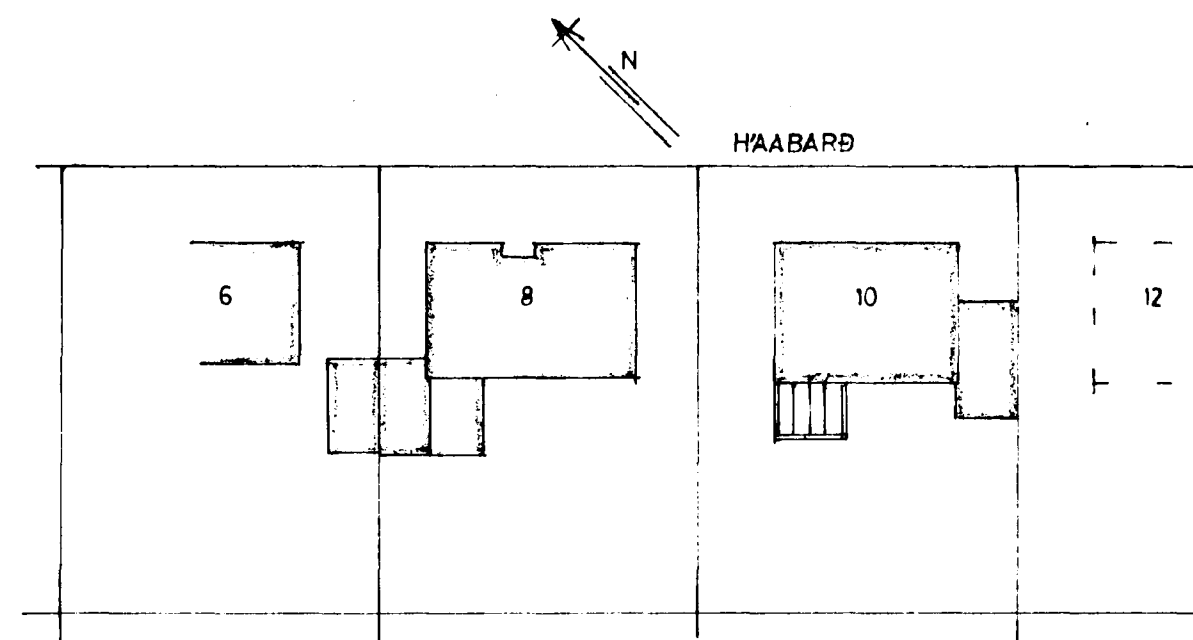
NORÐVESTUR



GRUNNMYND



SUDAUSTUR



HÁABARÐ

AFSTÖÐUMYND
1:500

$$3,6 \times 4,2 = 15,1 \text{ m}^2$$

$$\times 2,53 = 38 \text{ m}^3$$

STÆRÐ:

$$15,1 \text{ m}^2, 38 \text{ m}^3$$

HÁABARÐ NR 10

BLÖMASKALI

GRUNNMYND
ÚTLIT 1:100

AFSTÖÐUMYND 1:500

Þorvaldur Thors
 1985