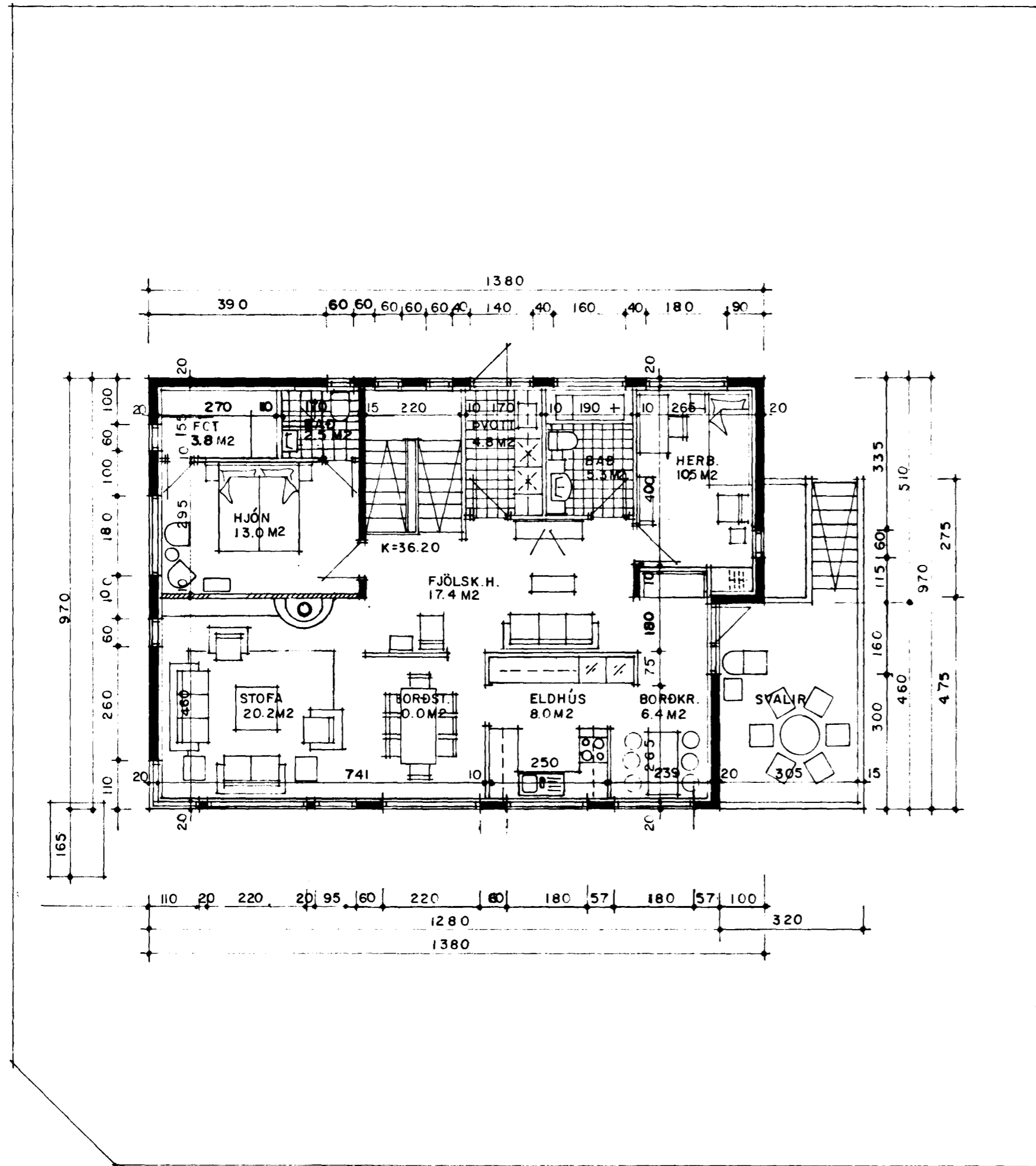


$$13,80 \times 9,20 = 129,26 \text{ m}^2$$

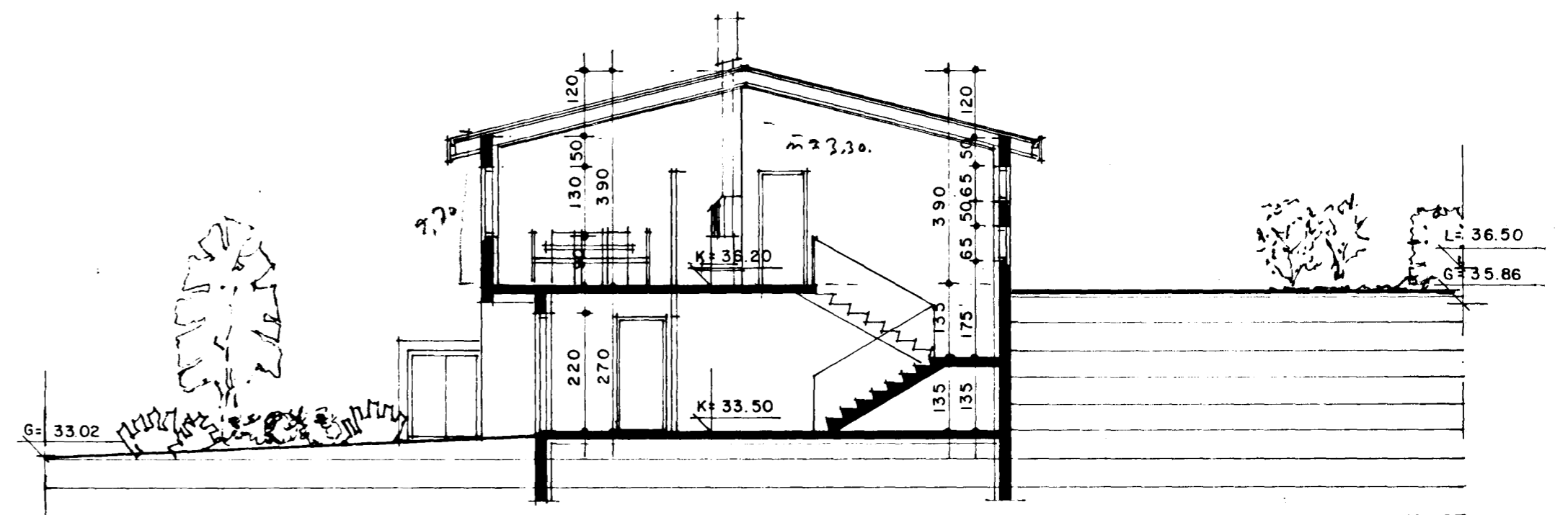
$$- 1,0 \times 4,60 = -4,60 \text{ m}^2$$

$$\hline 129,26 \text{ m}^2$$

Samþykkt á fundi bygginga-  
nefndar þ. 15.9. 1993.  
BYGGINGAFULLTRÚINN  
Í HAFNARFIRÐI  
*Sigríð Halldóttir*



vesturhlid



sneiðing A-A

grunnmynd efri hæðar