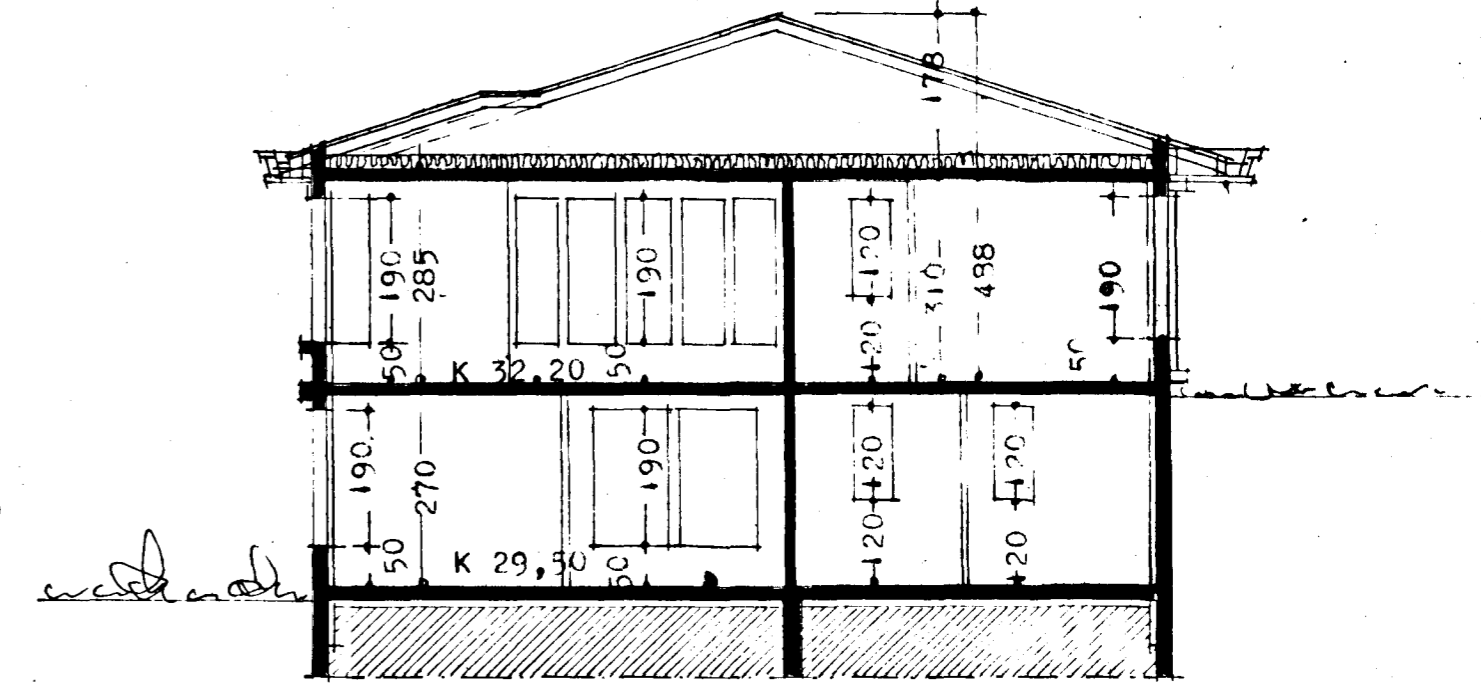
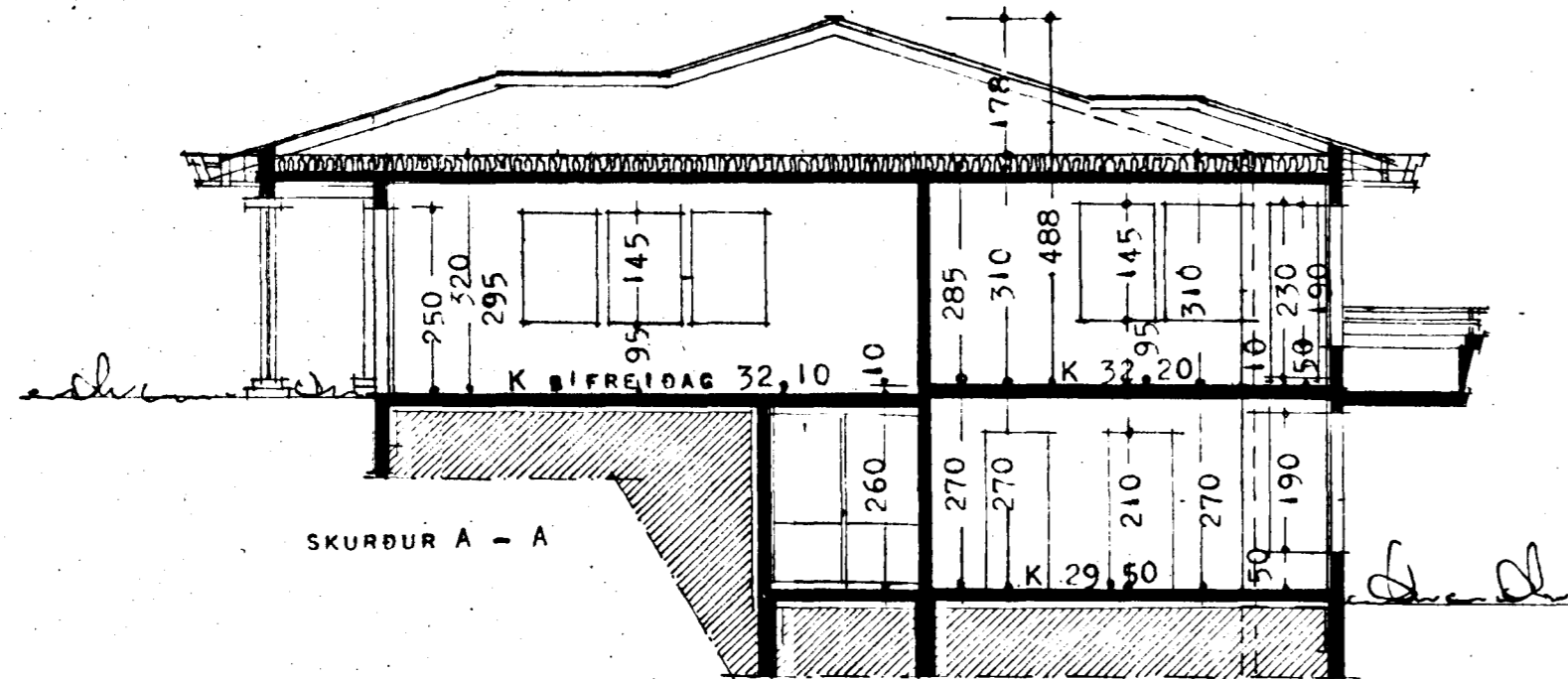


Samþykkt á fundi bygginga-
nefndar p. 20 / 3 10 91

BYGGINGAFAFULLTRÚINN
Í HAFNARFIRÐI

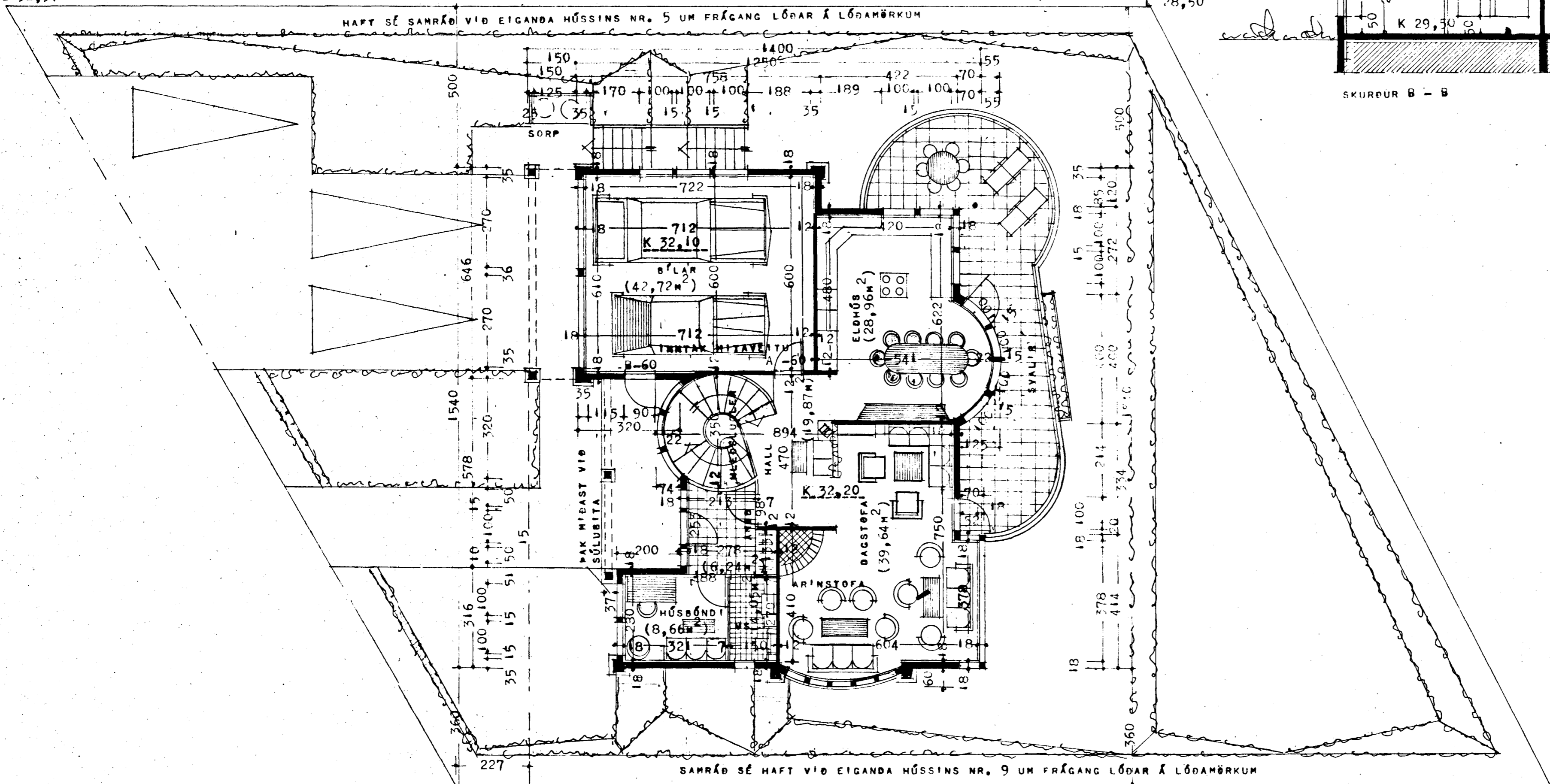
Ganga skal frá opnu
eldstæði í samræmi
við reglugerðir

ÞAKHALLI ER 17° (30,57 CM Á METER)

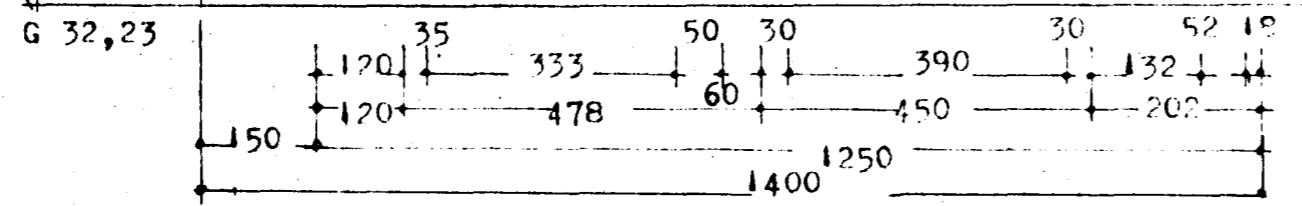


G 32,37

HAFT SÉ SAMRÁÐ VIÐ EIGANDA HÚSSINS NR. 5 UM FRÁGANG LÖÐAR Á LÖÐAMÖRKUM



L 27,40



Garðar Sveinsson