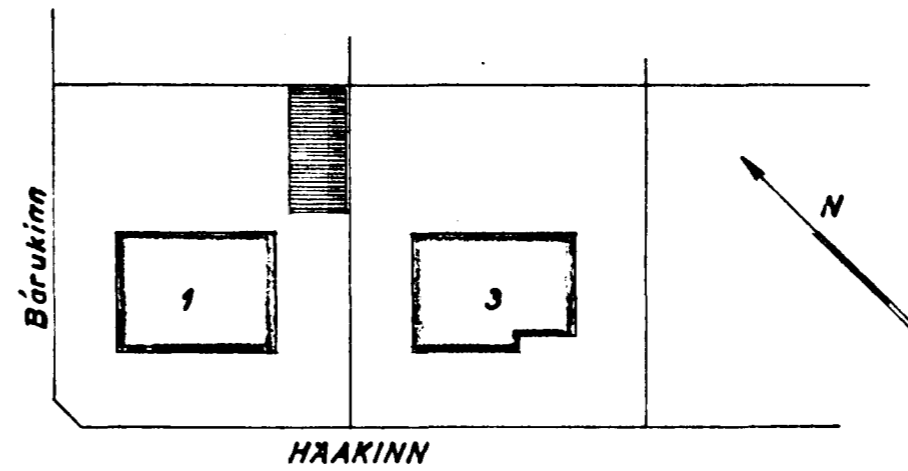
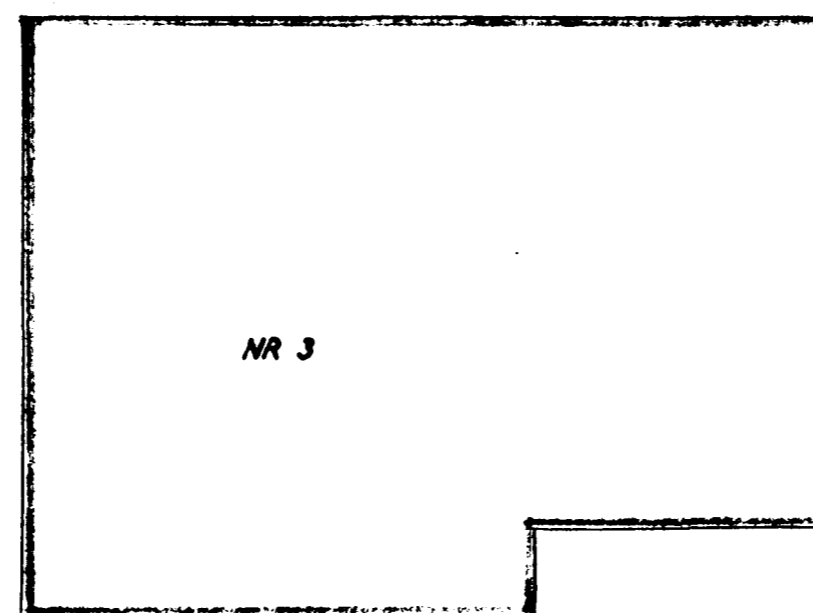
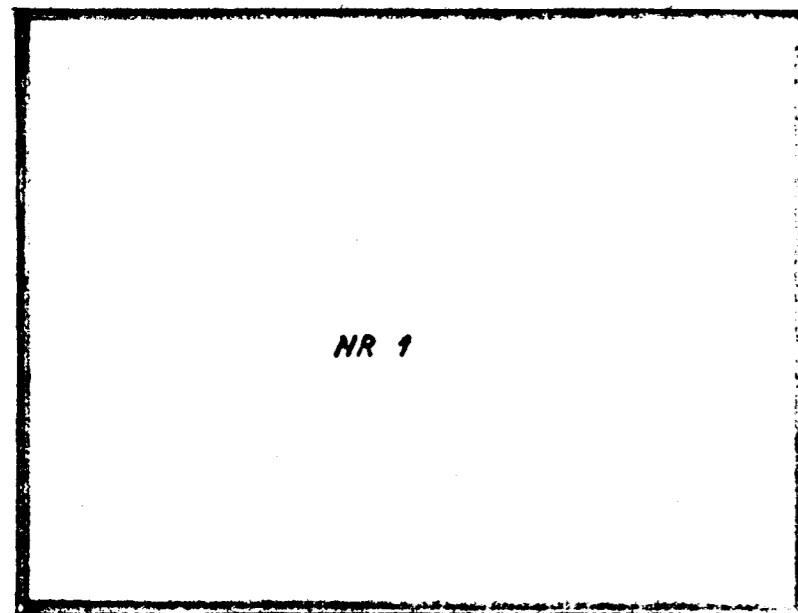
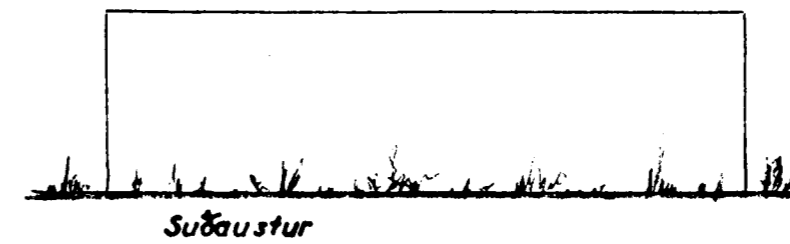
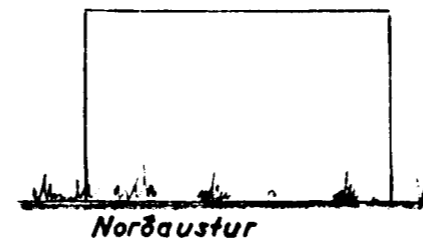
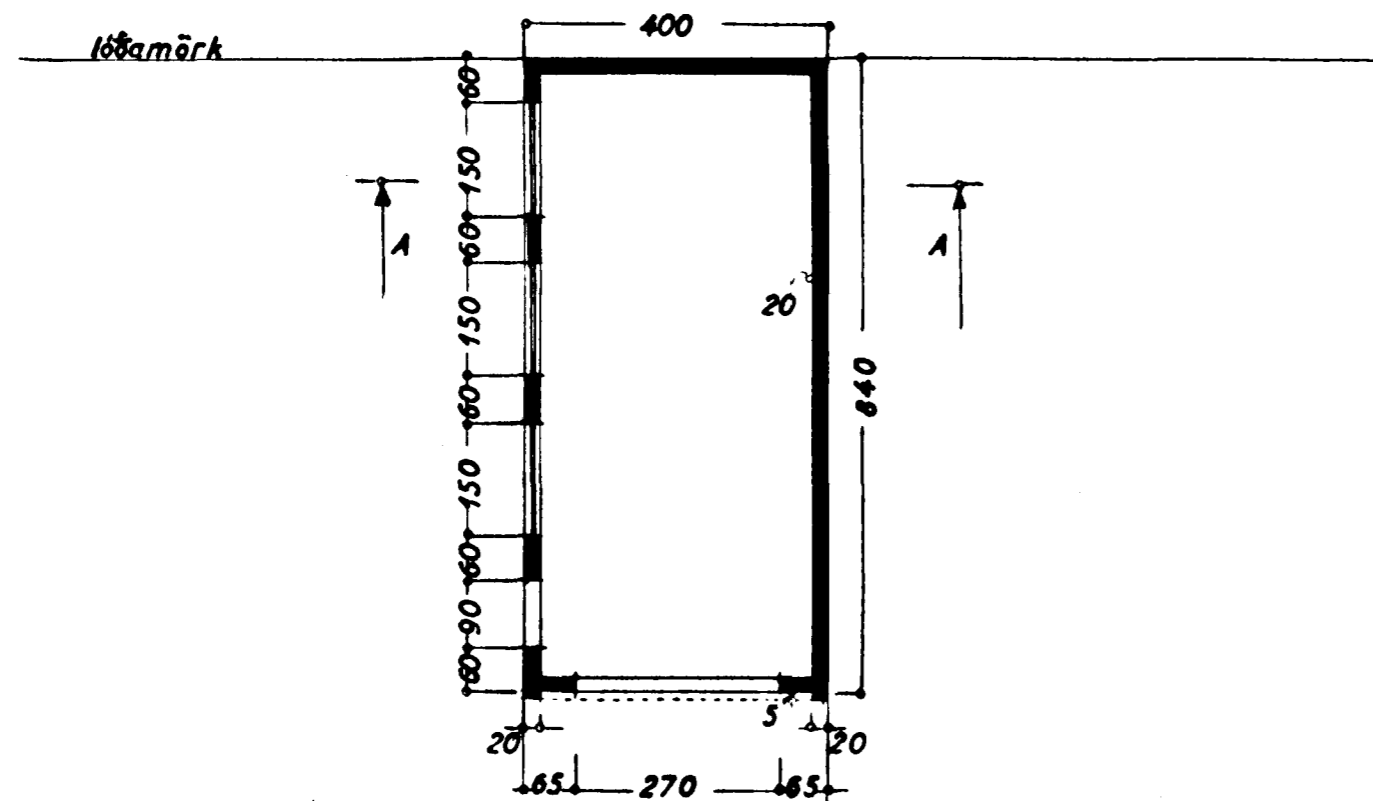
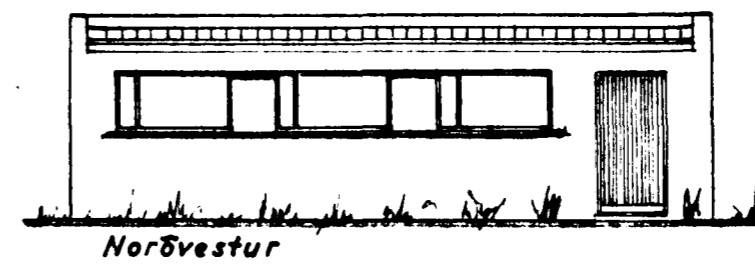
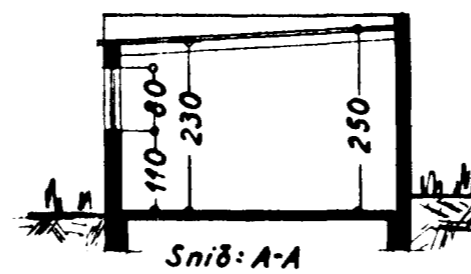
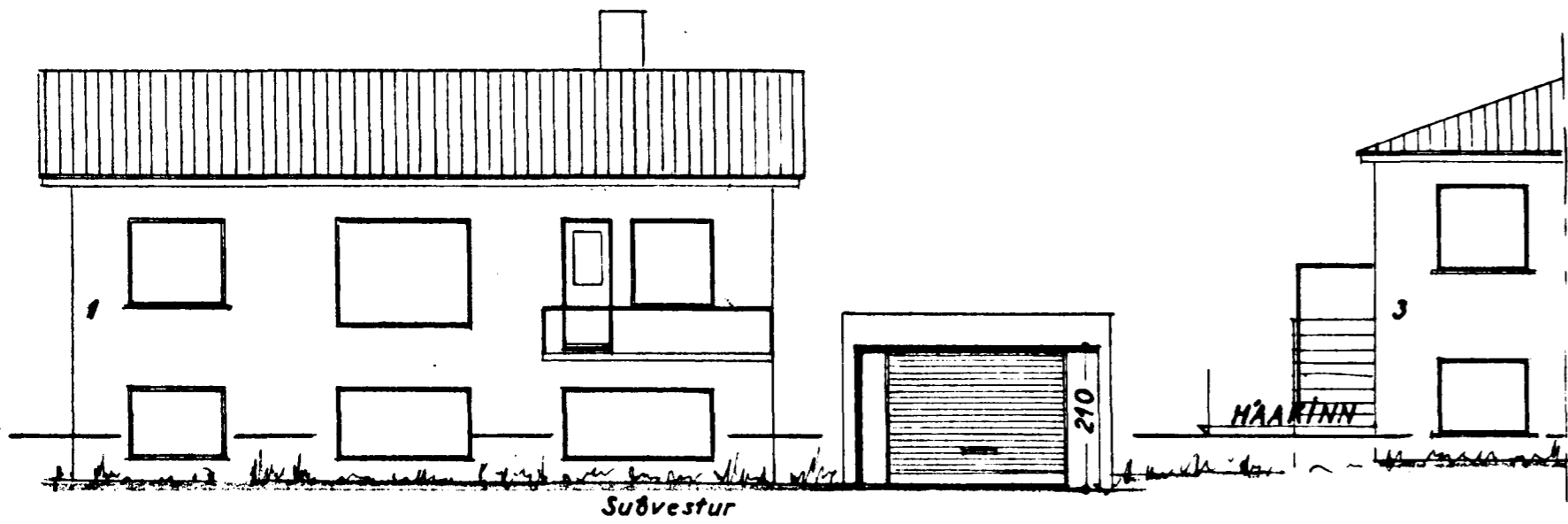


AFSTÖÐUMYND
1:500

32/66



Samþykkt & fundi bygginga-
nefndar þ. 27. 4. 1966
BYGGINGAFULLTRÚINN
Í HAFNARFIRÐI
Þorvaldur E. Þórh.



Stærð húss: 84,0 m²
--- bílg: 33,6 m² 80,6 m²
LÖB: 449,2 m²

HAAKINN NR. 1
BÍLGEYMSLA

Útitt
Grunnmynd } 1:100
Snið
Afstöðumynd 1:500

Staðsmarkirindi 2. apríl 1966
Þorvaldur E. Þórh.