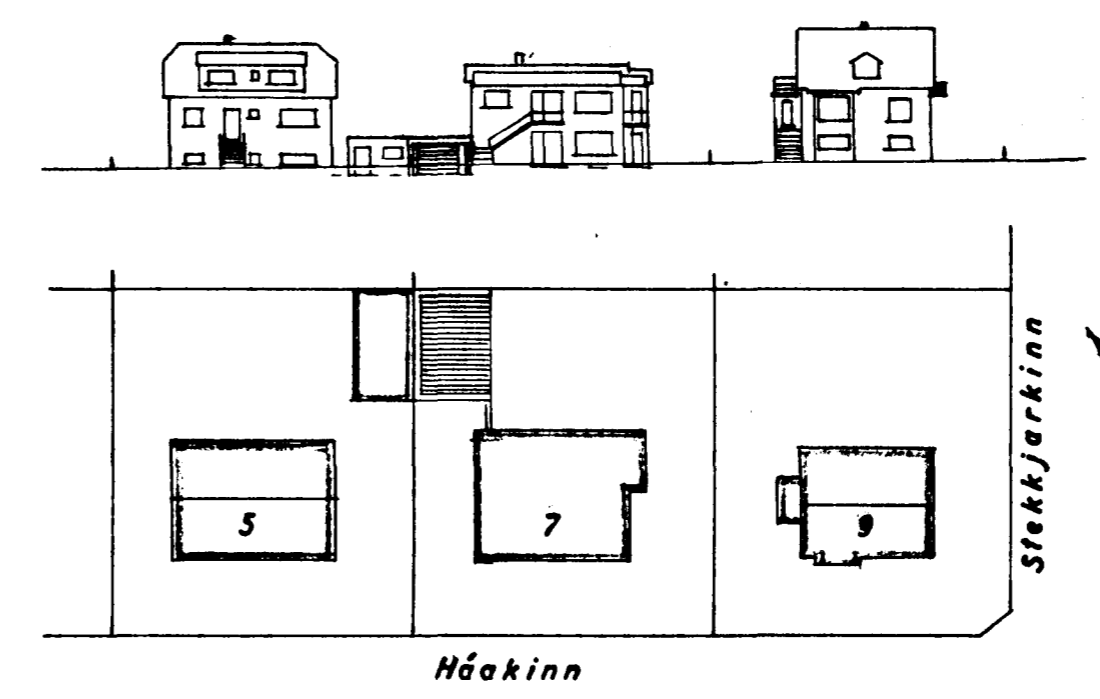
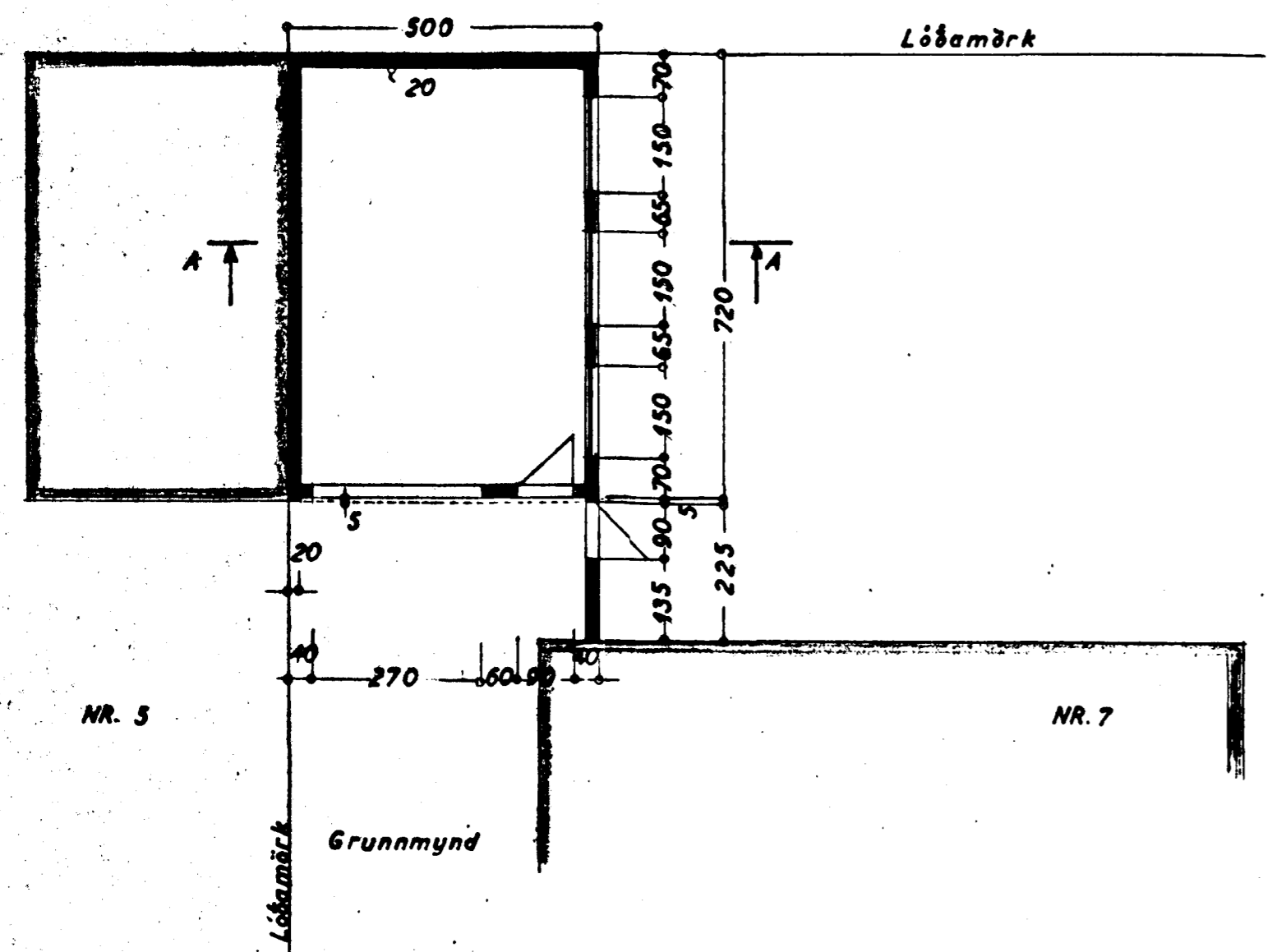
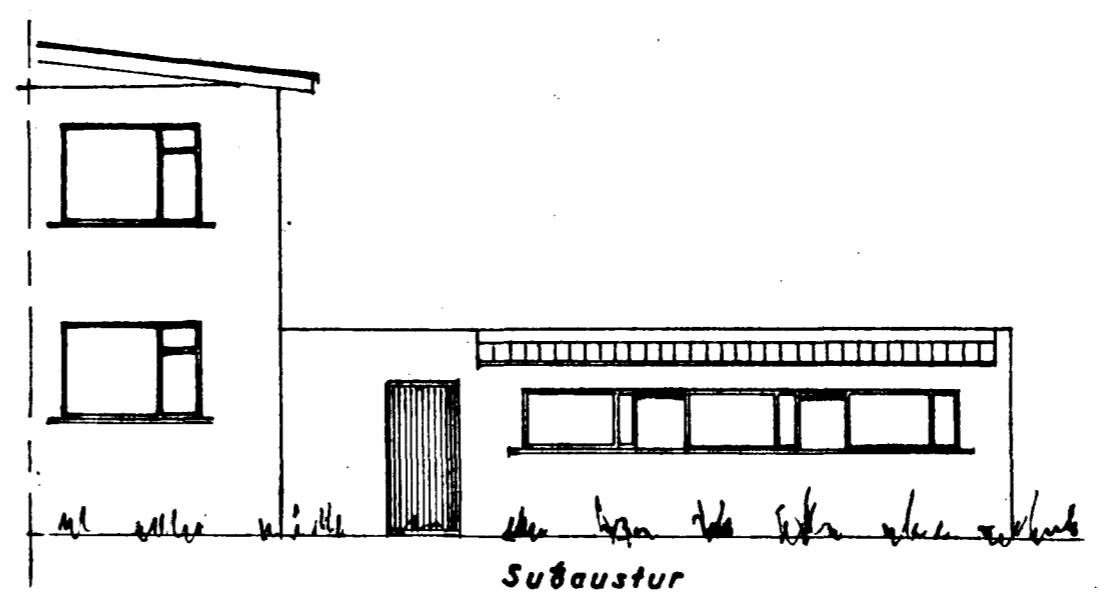
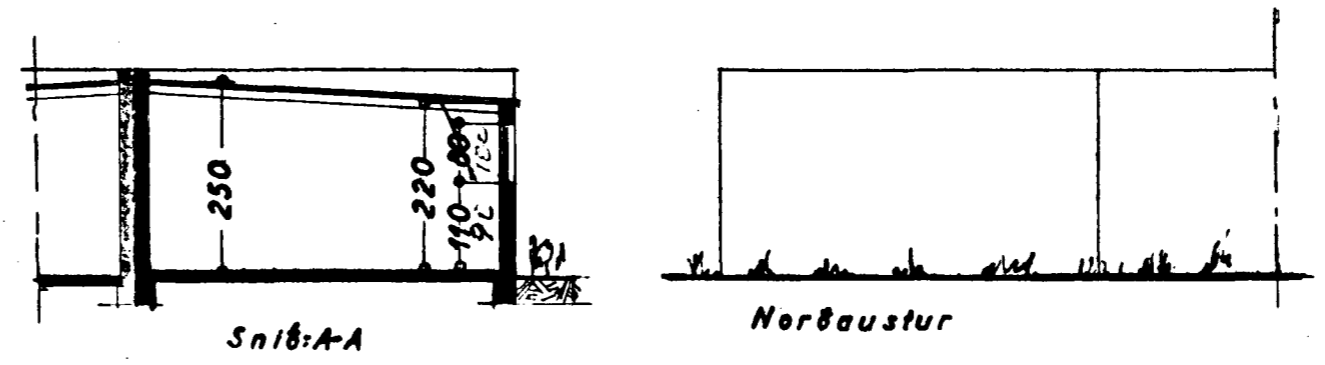
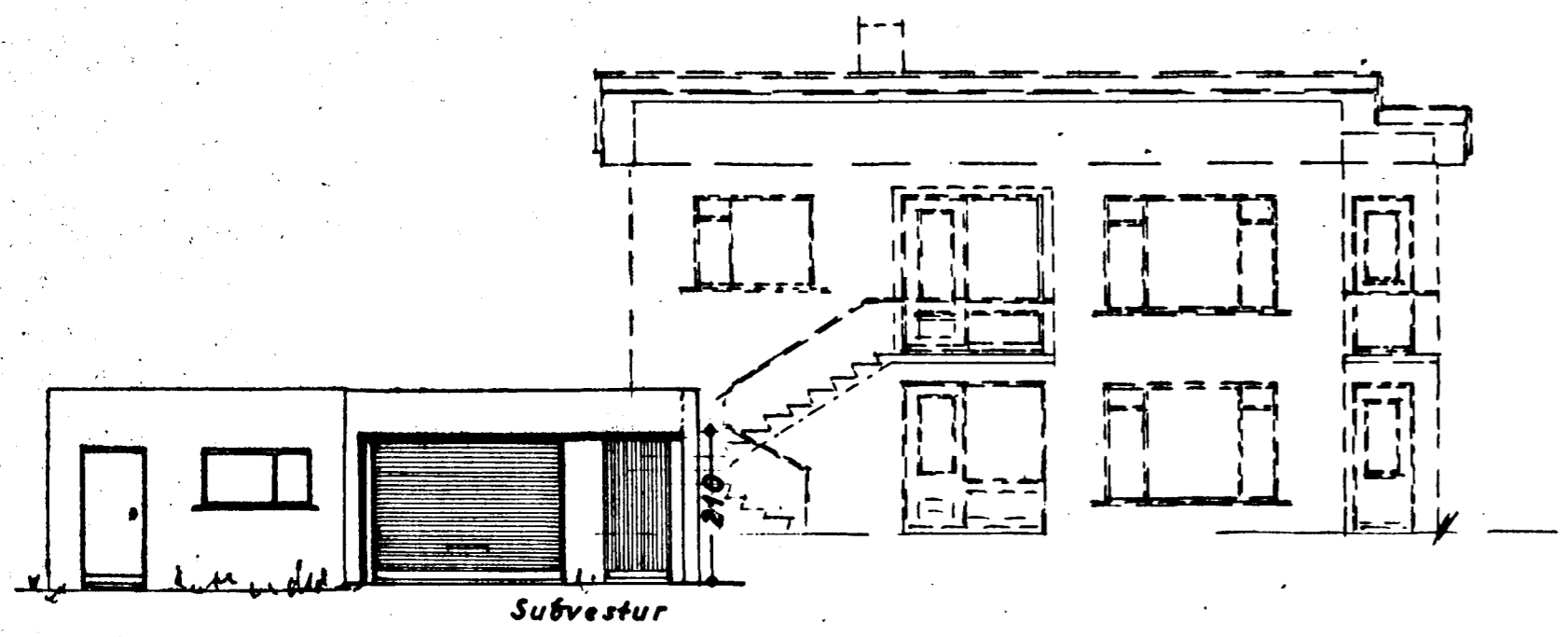


6/66

Samþykkt á fundi bygginga-
nefndar þ. 20. 7. 1966
BYGGINGAFLUTRÚINN
HAFNARFIRÐI



Afstöðumynd
1:500

STÆRD:

húsa 90,9 m²
bilg. 36,0 m² 84,6 m³
166 450,8 m²

HAAKINN NR. 7 BÍLGEYMSLA

Útlit } 1:100
Grunnmynd }
Snib }
Afstöðumynd 1:500

Hafnarfærði 2. júní 1966
F. Sigurðsson