

Samþykkt á fundi bygginga-
nefndar þ. 7. 8. 1968

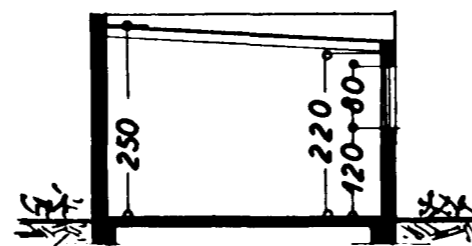
BYGGINGAFULLTRÚINN

I HAFNARFIRÐI

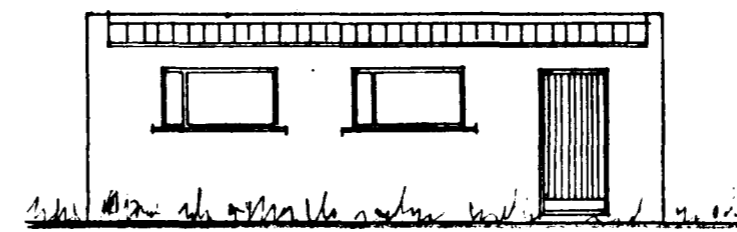
E. Sigurðsson



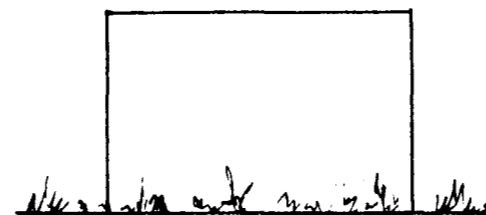
Suðvestur



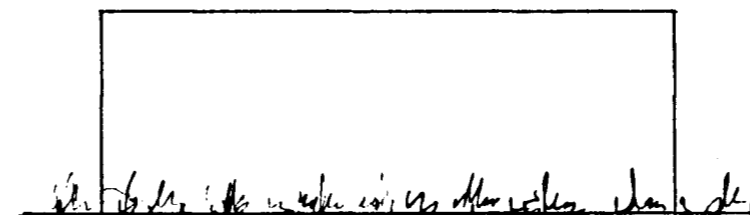
Snib: A-A



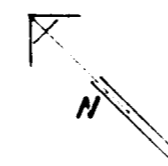
Suðaustur



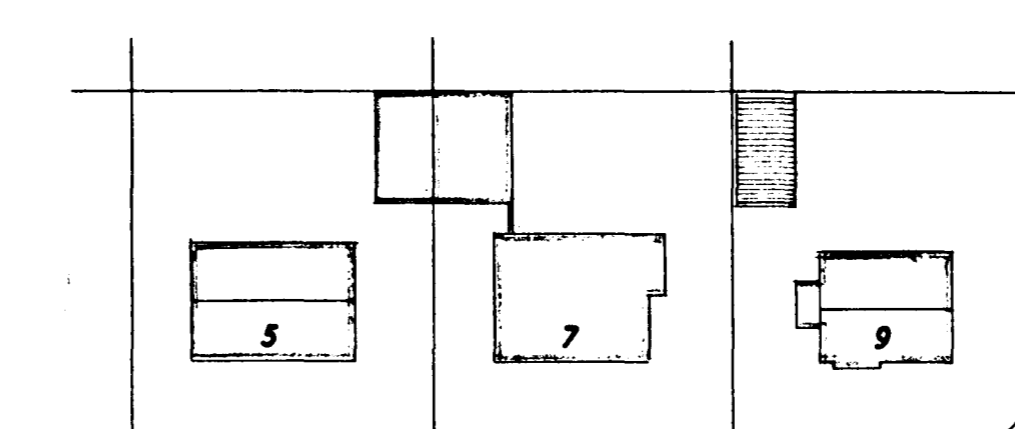
Norðaustur



Norðvestur

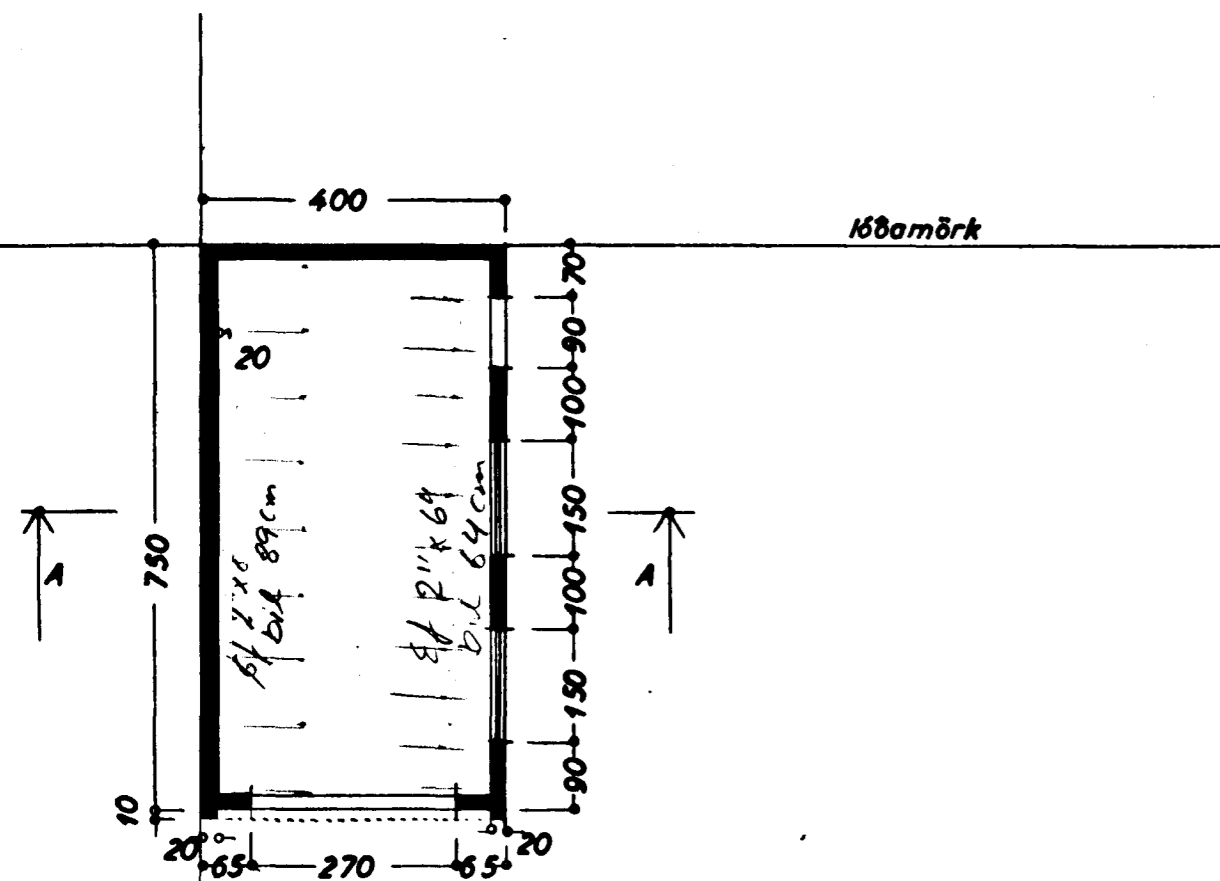


Afstöðumynd
1:500



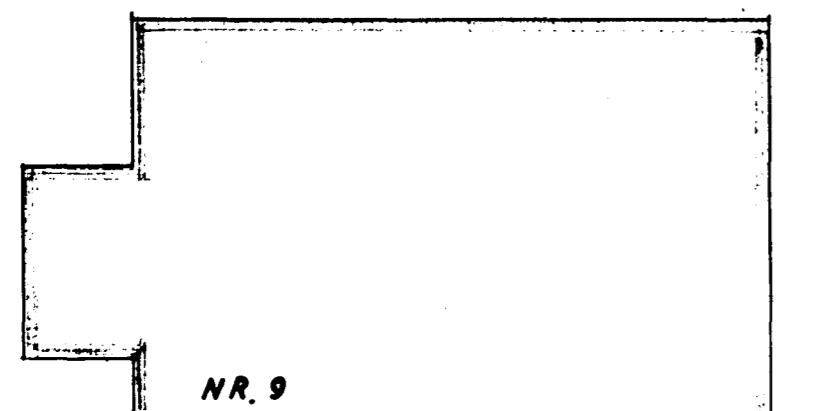
HAAKINN

Stekkjarkinn



Lóðamörk

Grunnmynd



NR. 9

STERD:

Hús 61,2 m²

Lóð 449,5 m²

Bilg. 300 m² 700 m³

HAAKINN NR 9

BILGEYMSLA

Útlit } 1:100
Grunnmynd }
Snib }

Afstöðumynd 1:500

Hafnarfirði 5. júlí 1968

E. Sigurðsson