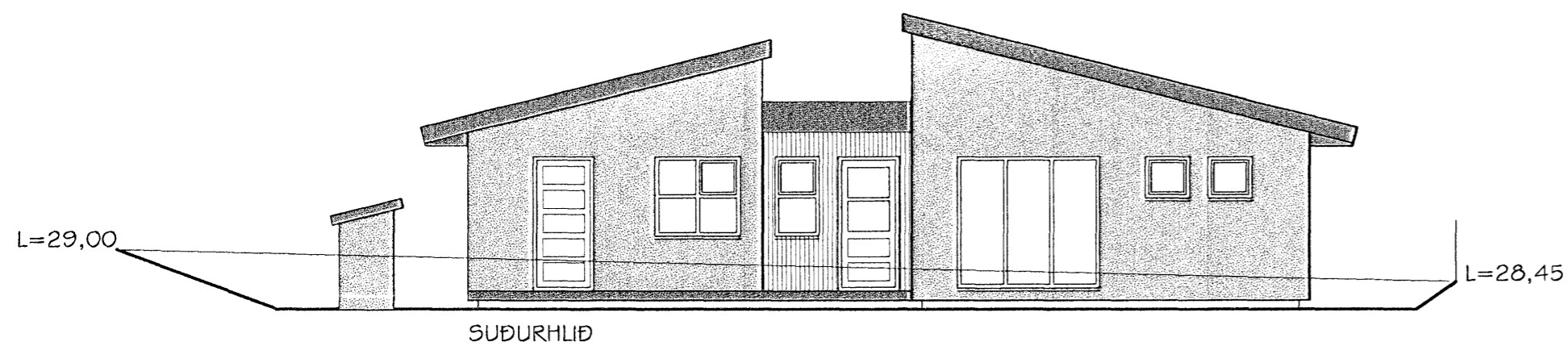
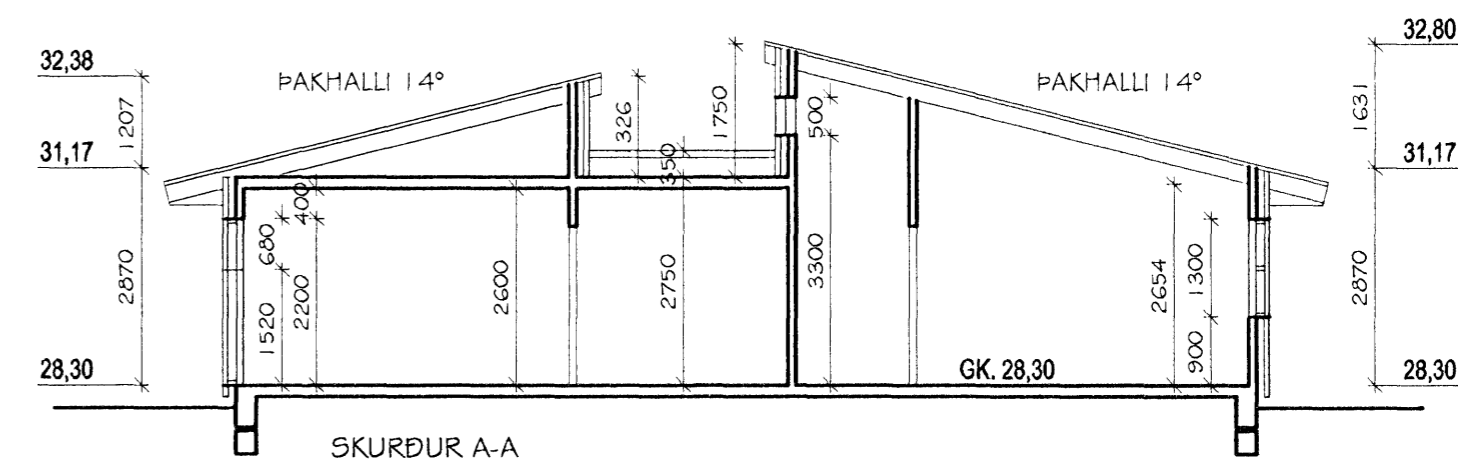
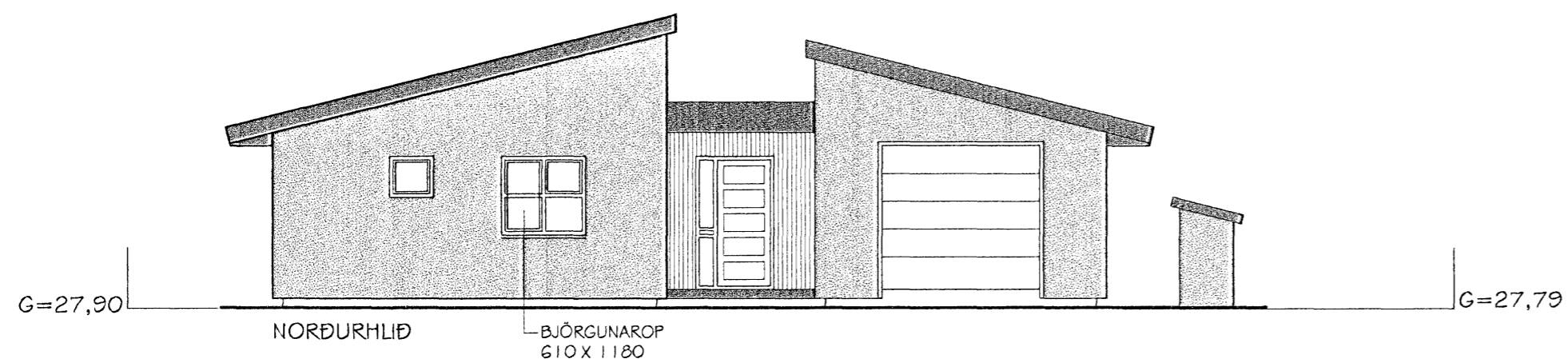
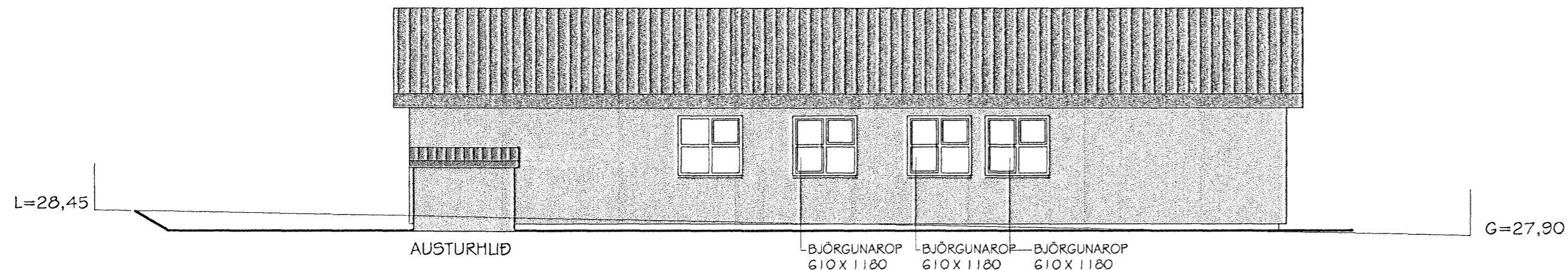
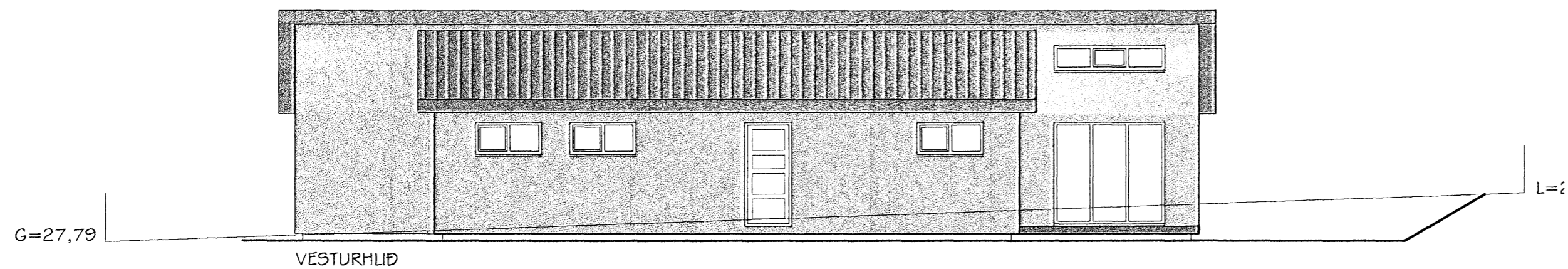




Samþykkt þann

13 SEP 2006

Byggingafrúinn í Hafnarfirði
F.h. Jón Sigurðsson



22. ágúst 2006 - gólfkoti hækkaður úr 28.00 m í 28.30 m

KVISTAVELLIR 25, HAFNARFJÖRÐUR
ÍBÚÐARHÚS - EINBÝLISHÚS
GRUNNMYND OG AFSTÖÐUMYND



HANNAÐI:	MHÓI	TEIKNAD:	S.J.	TEIKN NR.:	06-IB-511
KVARDI:	1:100 1:500 A2	DAGI:	27. MARS 2006	BREYTTI:	28. JÚNÍ 2006
HEITI & SKRÁ:		TEIKNAD I:	AutoCAD	BREYTTI:	22. ágúst 2006
Magnús H. Ólafsson arkitekt FAL kt. 150550-4759 s. 431 4210 / 893 2002 netfang: mark@sholf.is					