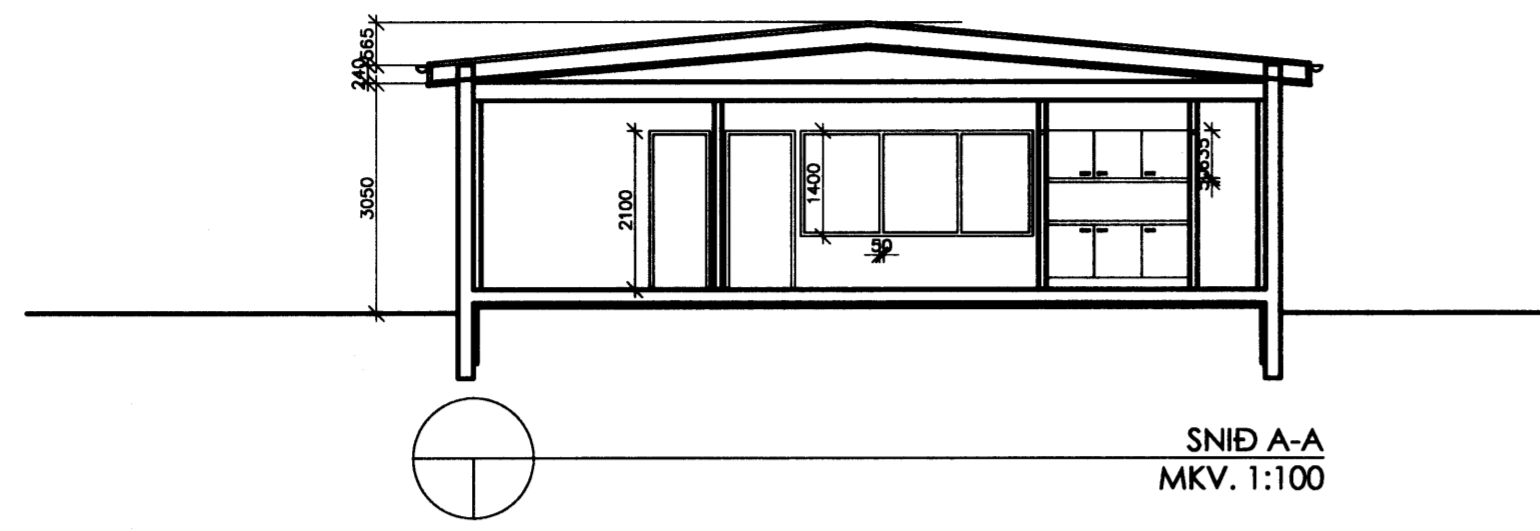
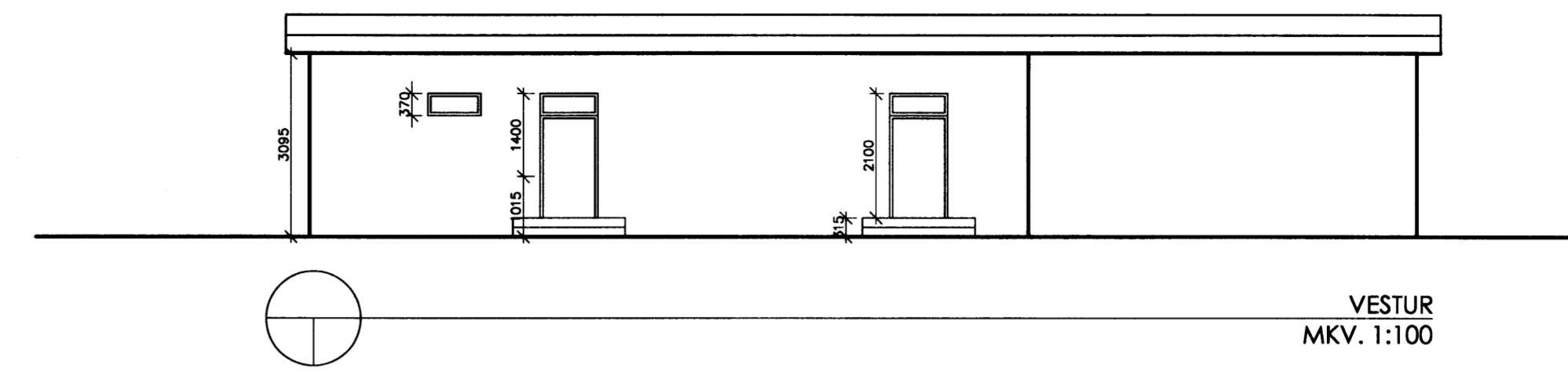


Samþykkt þann
22 FEB. 2006
Byggingafulltrúinn í Hafnarfirði
F.h. Kristján Þórarinnsson

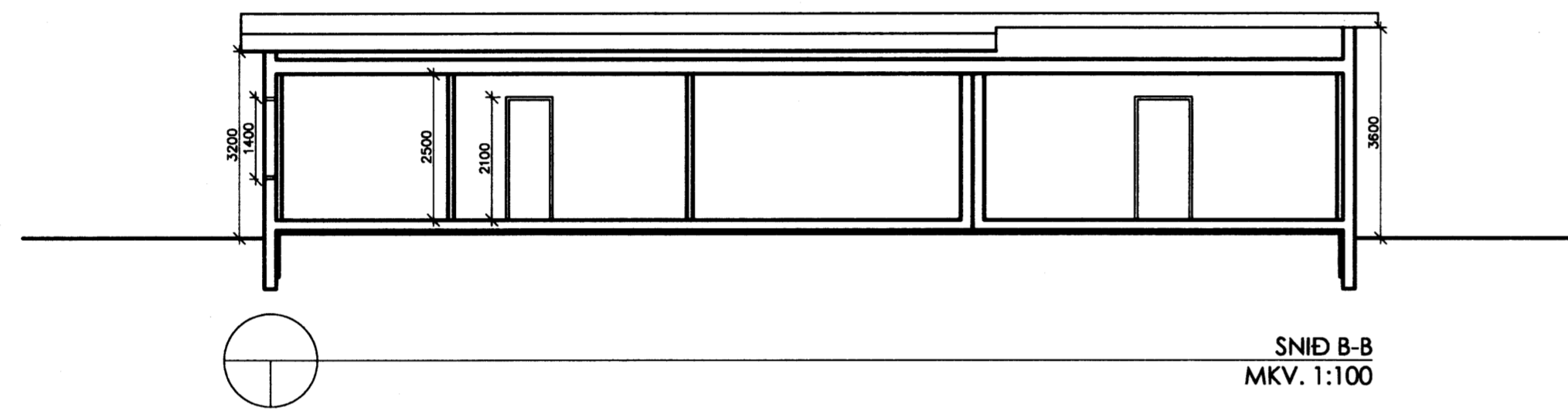
Handwritten initials



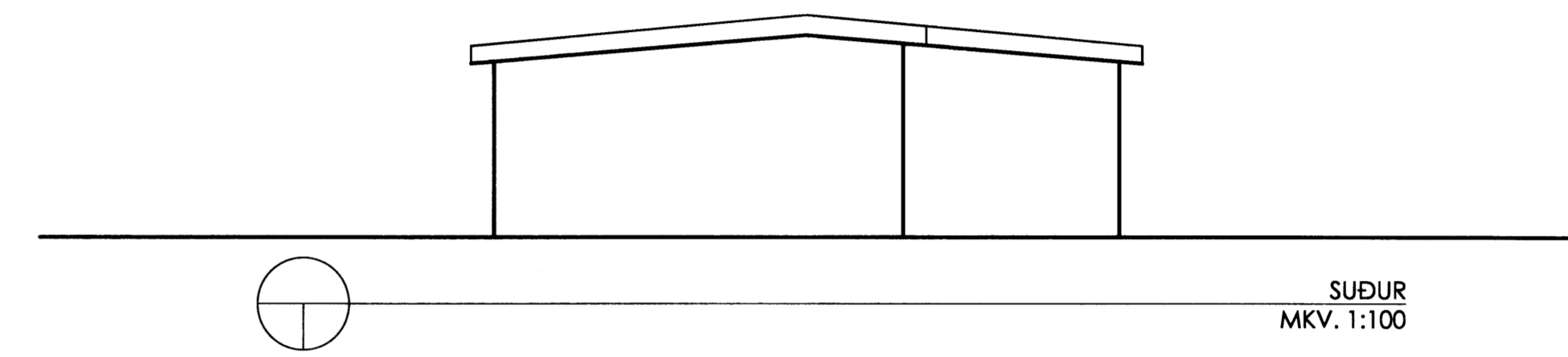
SNID A-A
MKV. 1:100



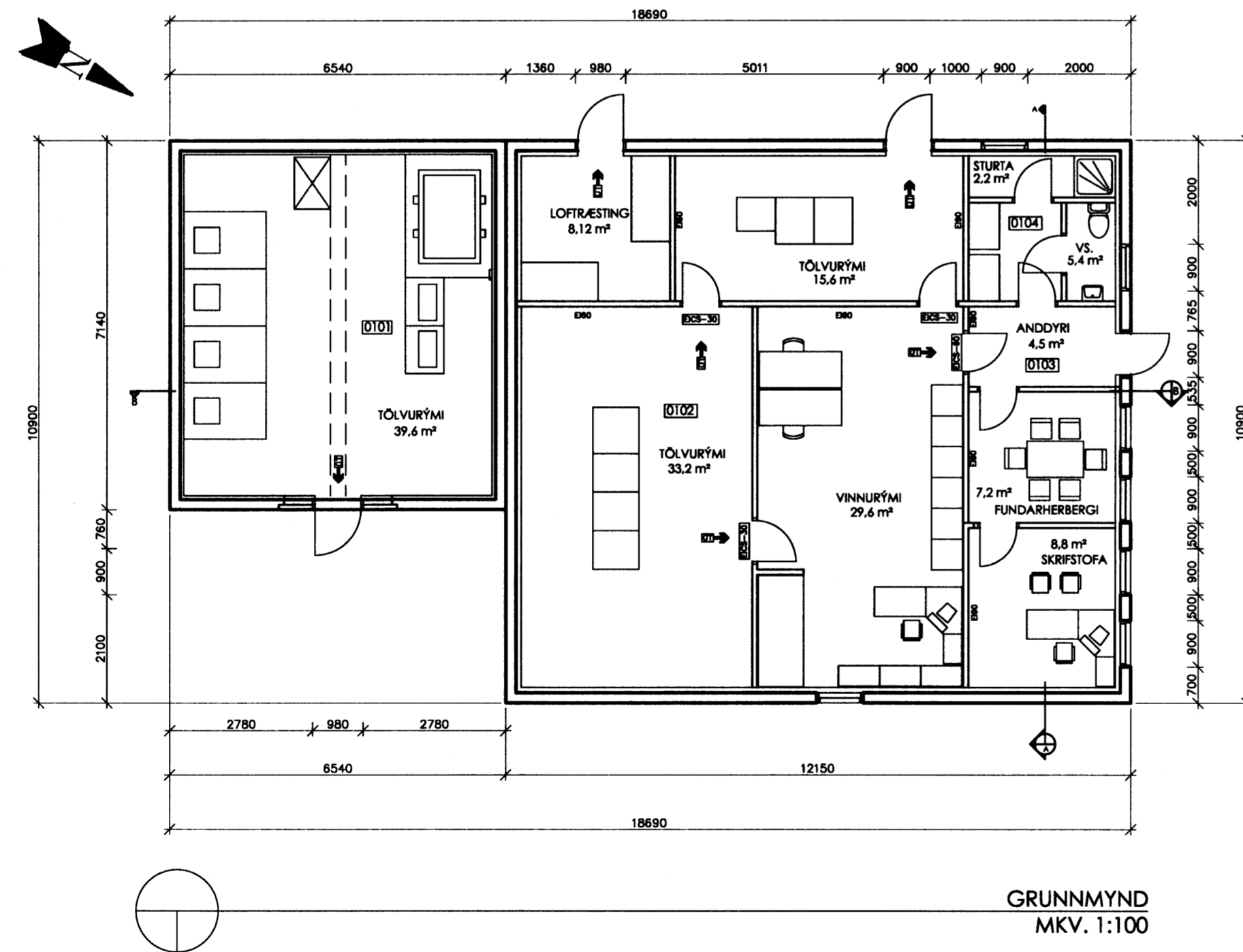
VESTUR
MKV. 1:100



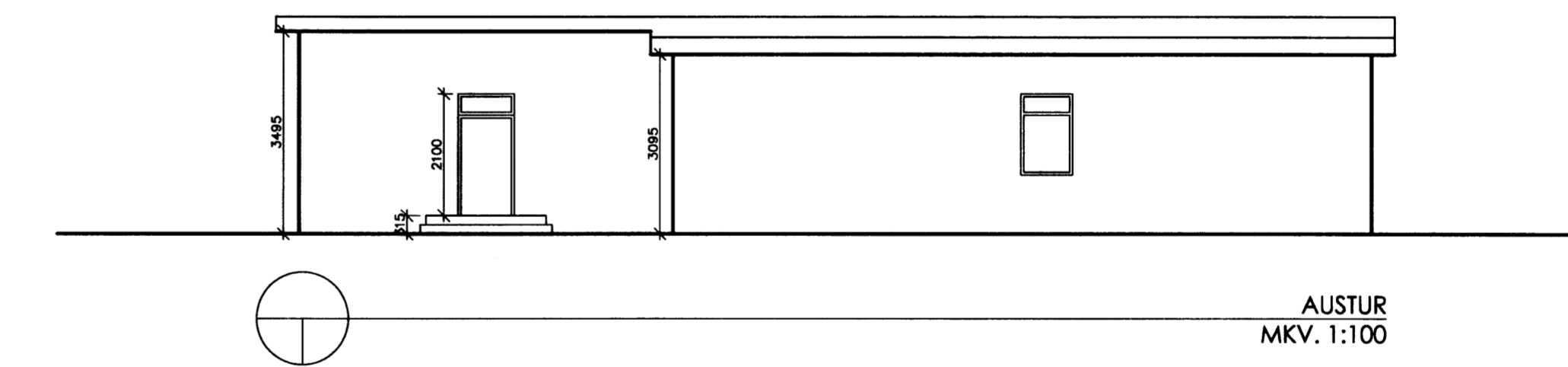
SNID B-B
MKV. 1:100



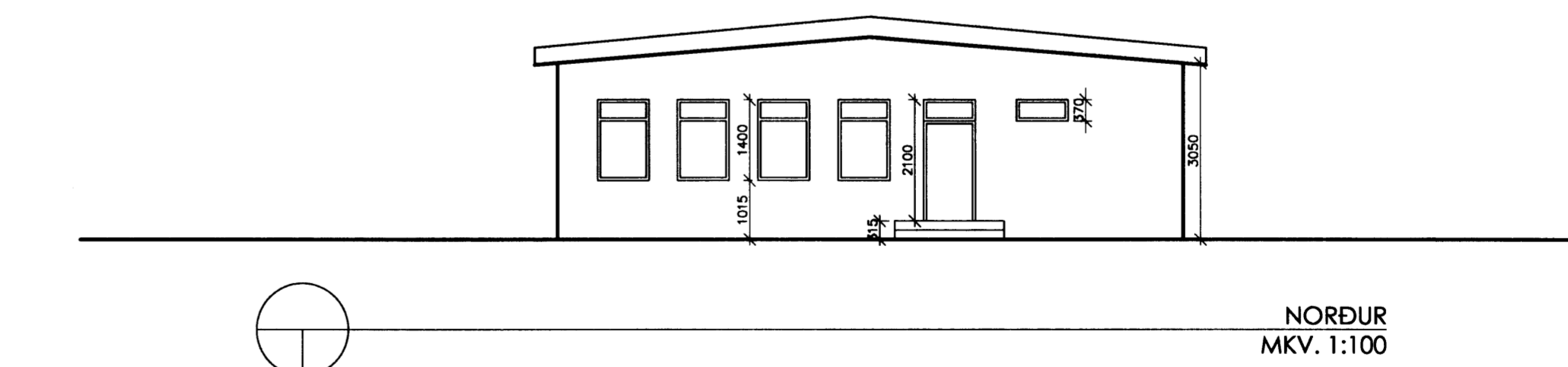
SUÐUR
MKV. 1:100



GRUNNMYND
MKV. 1:100



AUSTUR
MKV. 1:100



NORDUR
MKV. 1:100

Skýringar:
Explanations:



Guðjón Magnússon
Arkitekt FAI FSSA
Kt. 250456-4339

Breyt./ Rev.	Breyting / Revision	Dagur / Date	Samþ. / Approved	Nalk. heiml. / Released

This drawing is the property of the Alcan Iceland Ltd. and handed out for personal use only. It may neither be copied nor made available to others without permission of the Alcan Iceland Ltd. The receiver is liable for any misuse.

Fjöldi stykja / Number of pieces	Hlutur / Object	Atriði / Item	Efni / Material	sg. stk / Weight (kg)	totalt í heild / Total in total	Althugasemdir / Remarks
IV III II I	Tölvuhús mhl. 02			19		
	TÖLVUHÚS					
	GRUNNMYND, SNID OG ÚTLIT					
	Ventili / Supplier	Arkform, arkitektastofa				
	Tekinát / Drawn	KHÁ-DÝ 09.02.06	Yfirfarit / Checked	GM-DÝ 09.02.2006	Samþykkt / Approved	GM 09.02.2006
	ALCAN PRIMARY METAL EUROPE	Stráumvík	IS-222 Hafnarfjörður			
	ISAL					
					188101	0