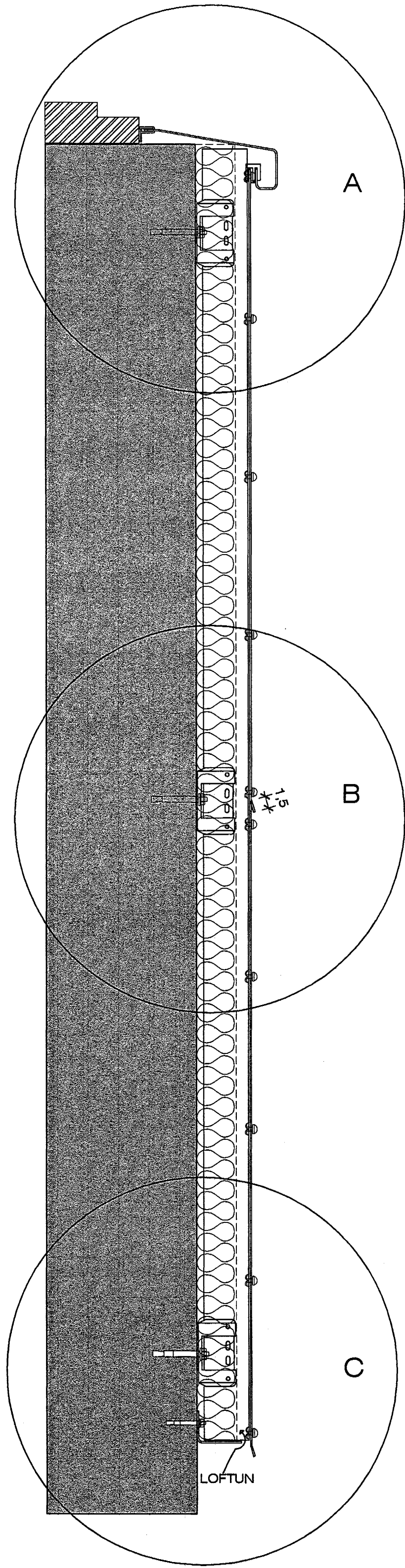
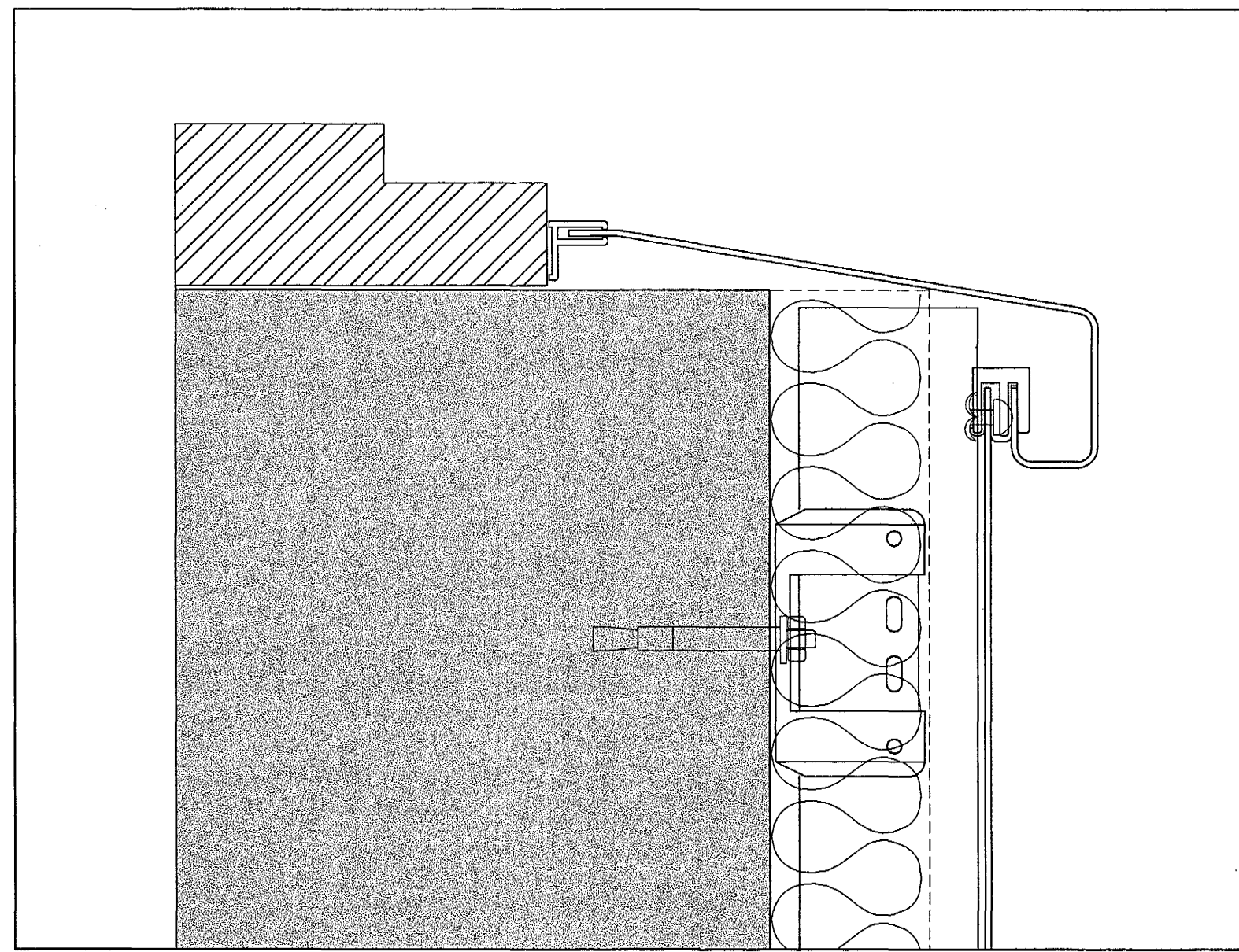


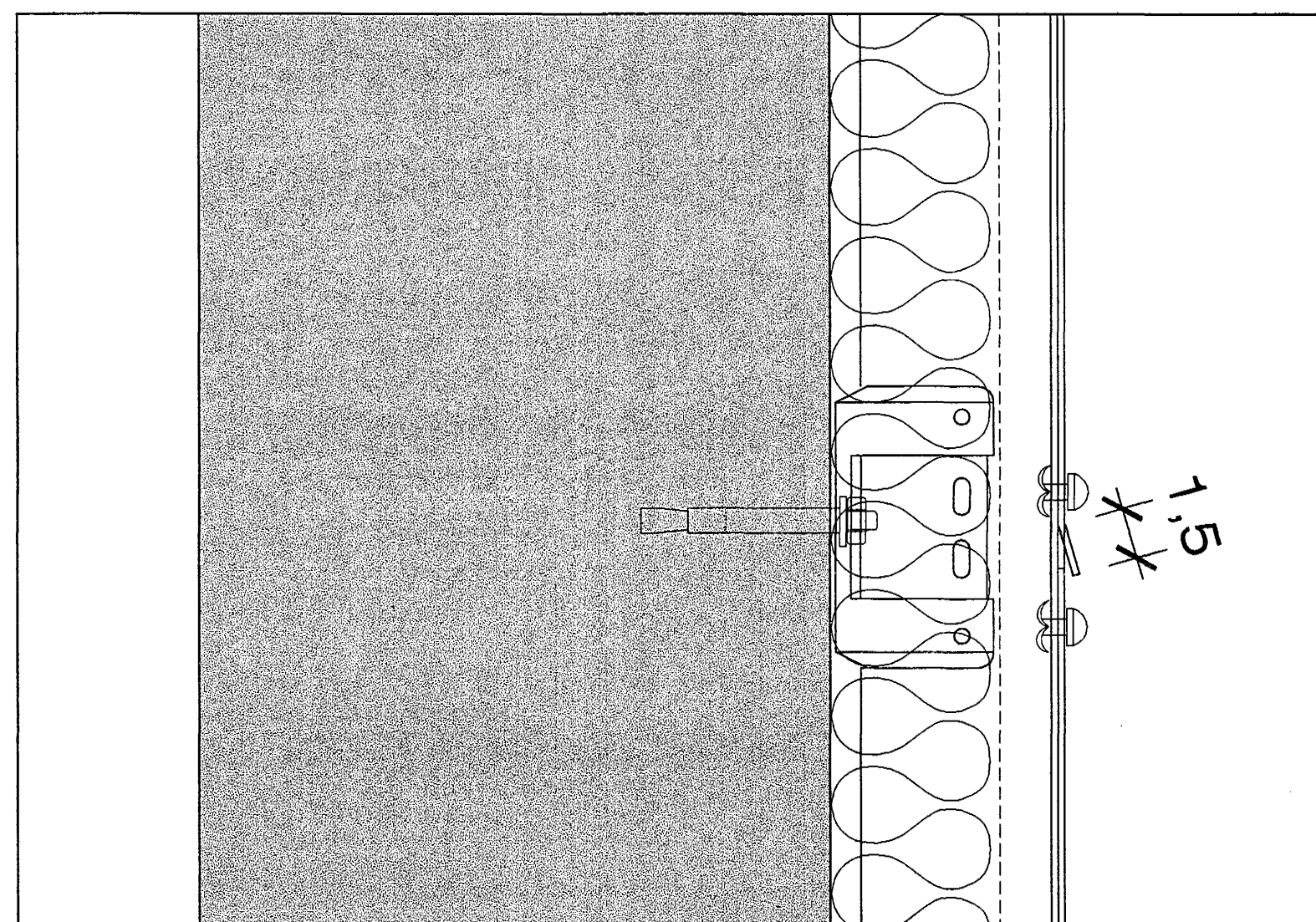
Klæðning með sléttu lituðu áli. 2,0 mm.



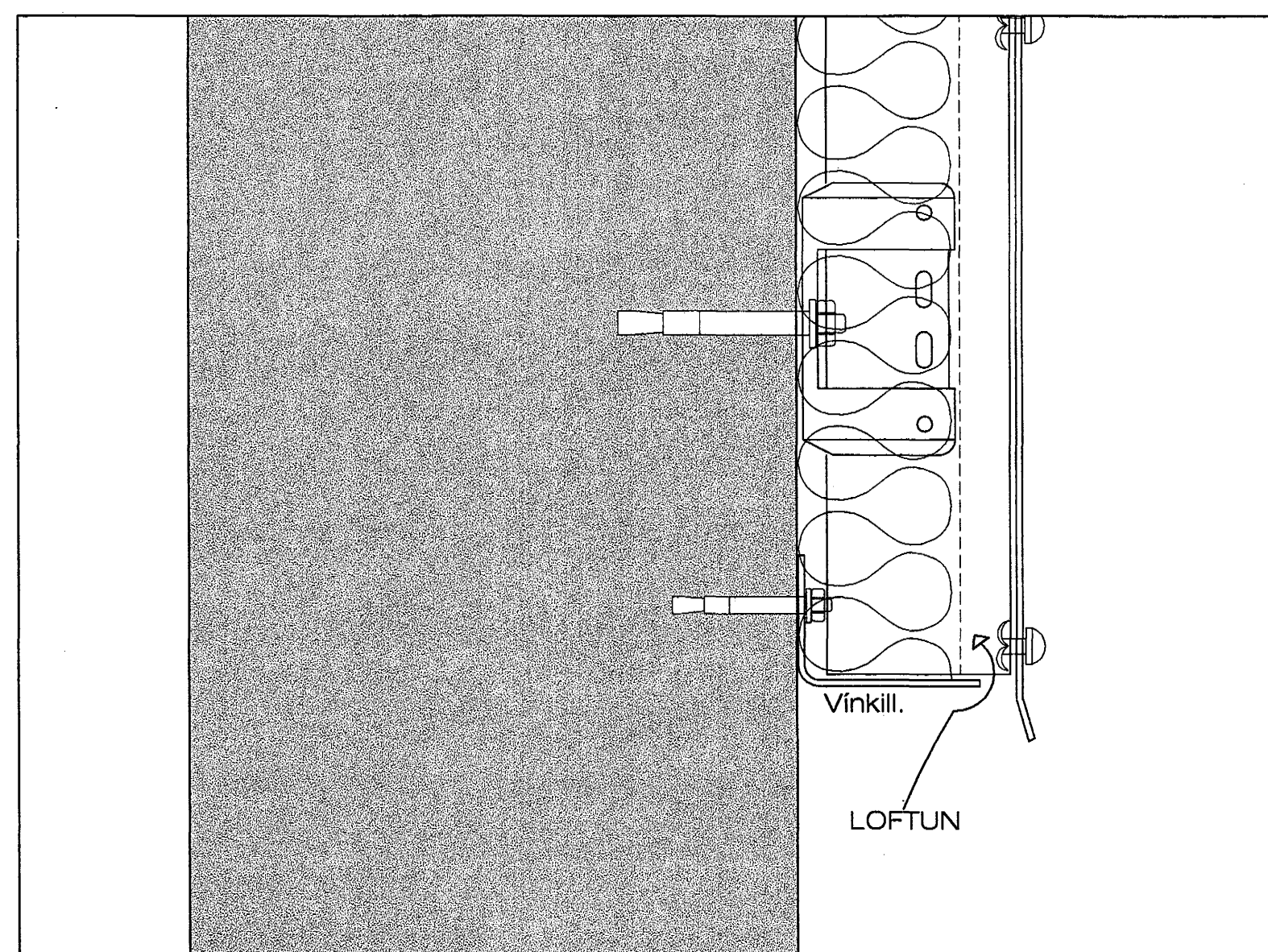
Sneiðing í álklaðningu á útvegg. 1:5



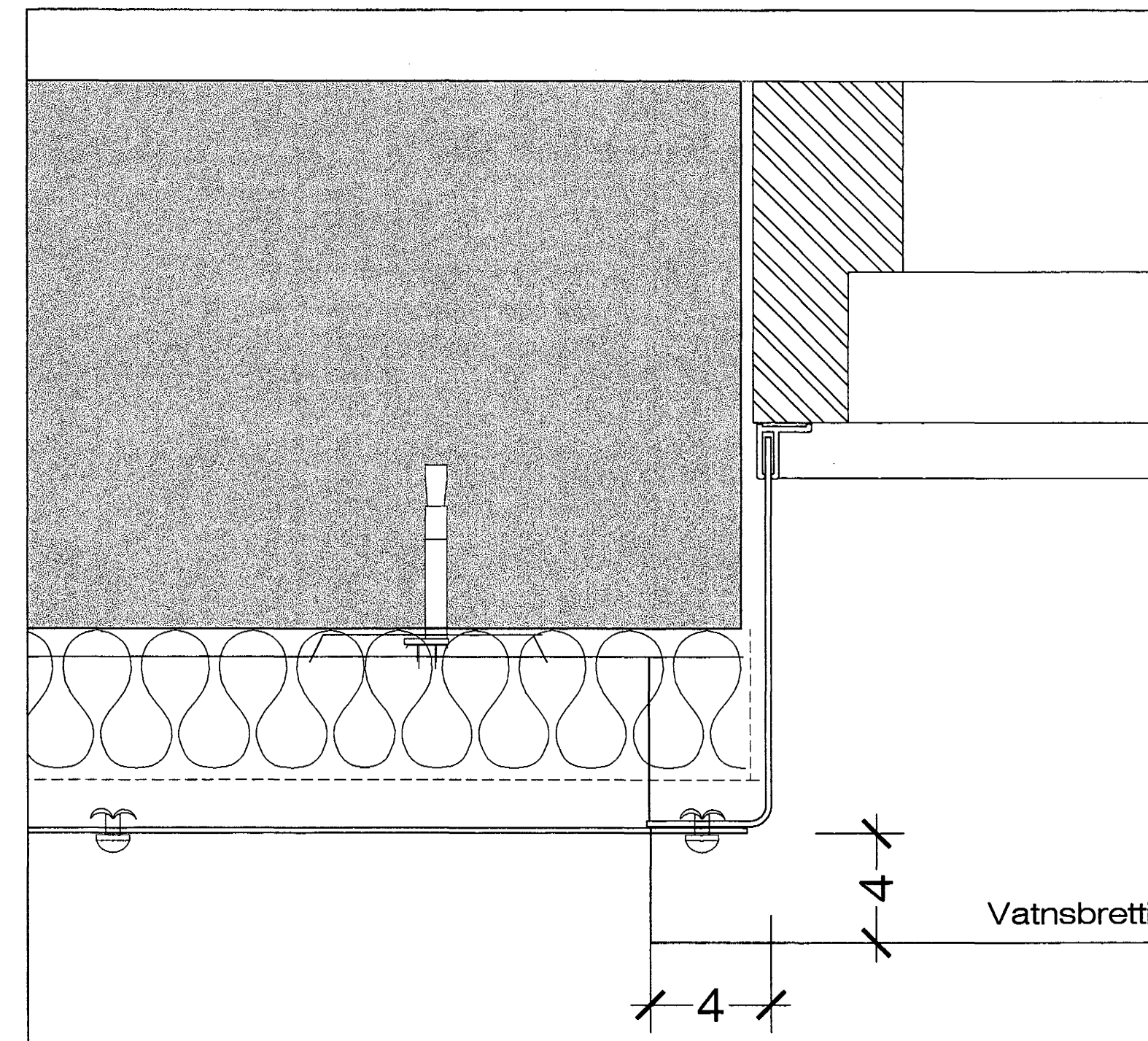
Vatnsbretti undir gluggum 1:2



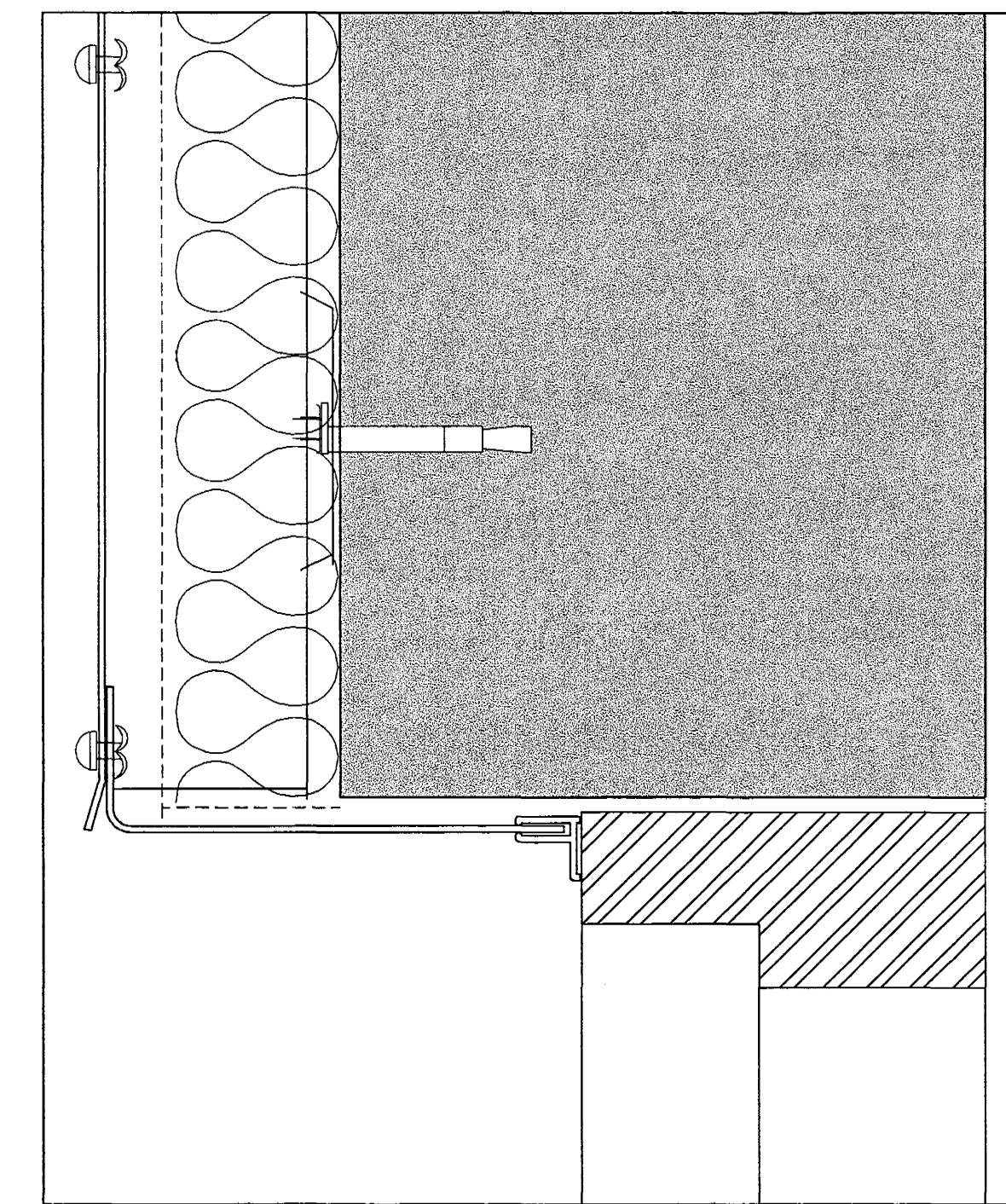
Lárétt plötusamskeiti. 1:2



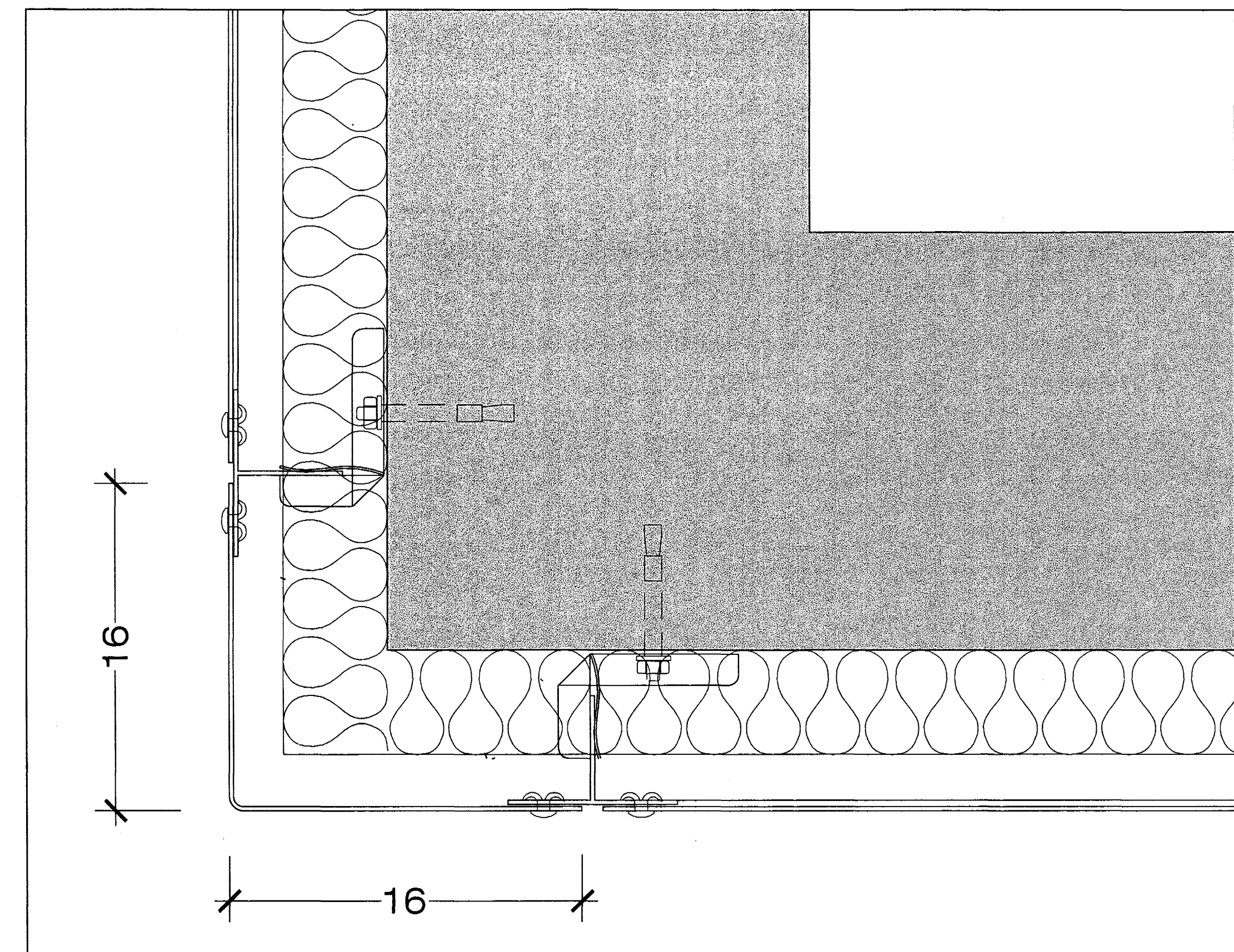
Frágangur ofan við jarðveg. 1:2



Hliðarfrágangur við glugga. 1:2



Frágangur við efribrún á glugga. 1:2



Frágangur á úthornum.. 1:2

Samþykkt þann
23 MAÍ 2005
Byggingafrúnn í Hafnarfirði
Eh. Sigurbjartur Hallgrímsson