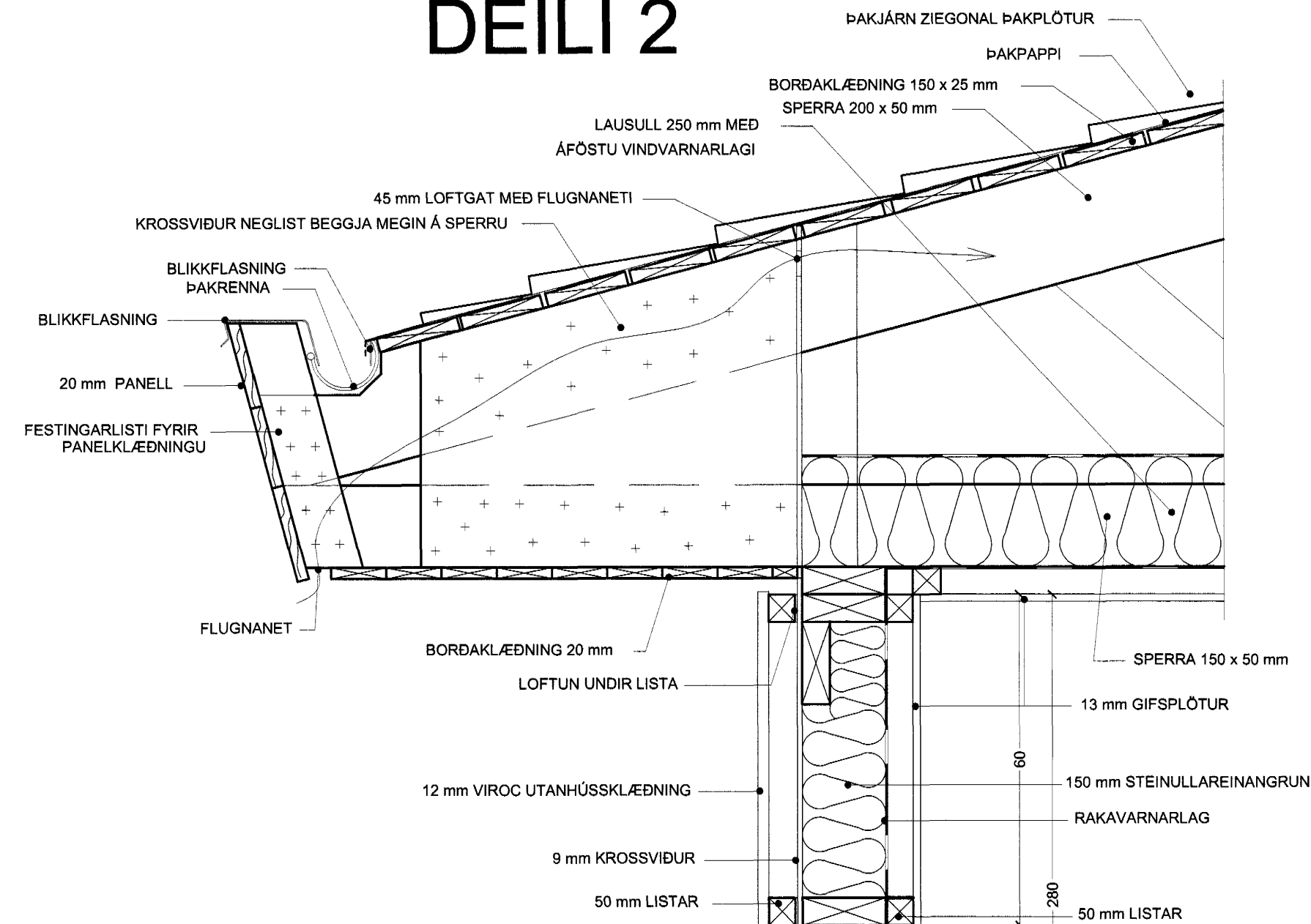
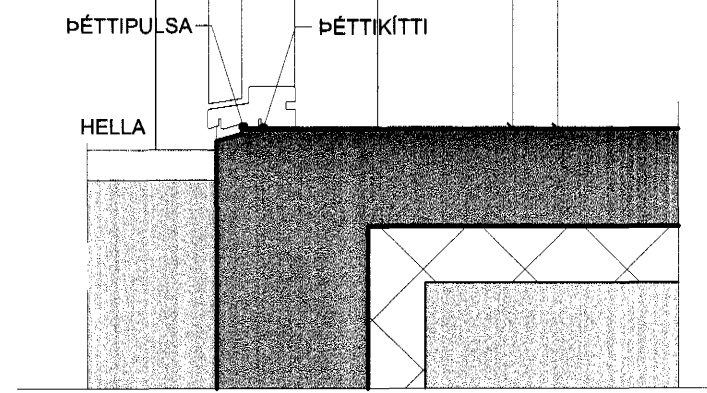


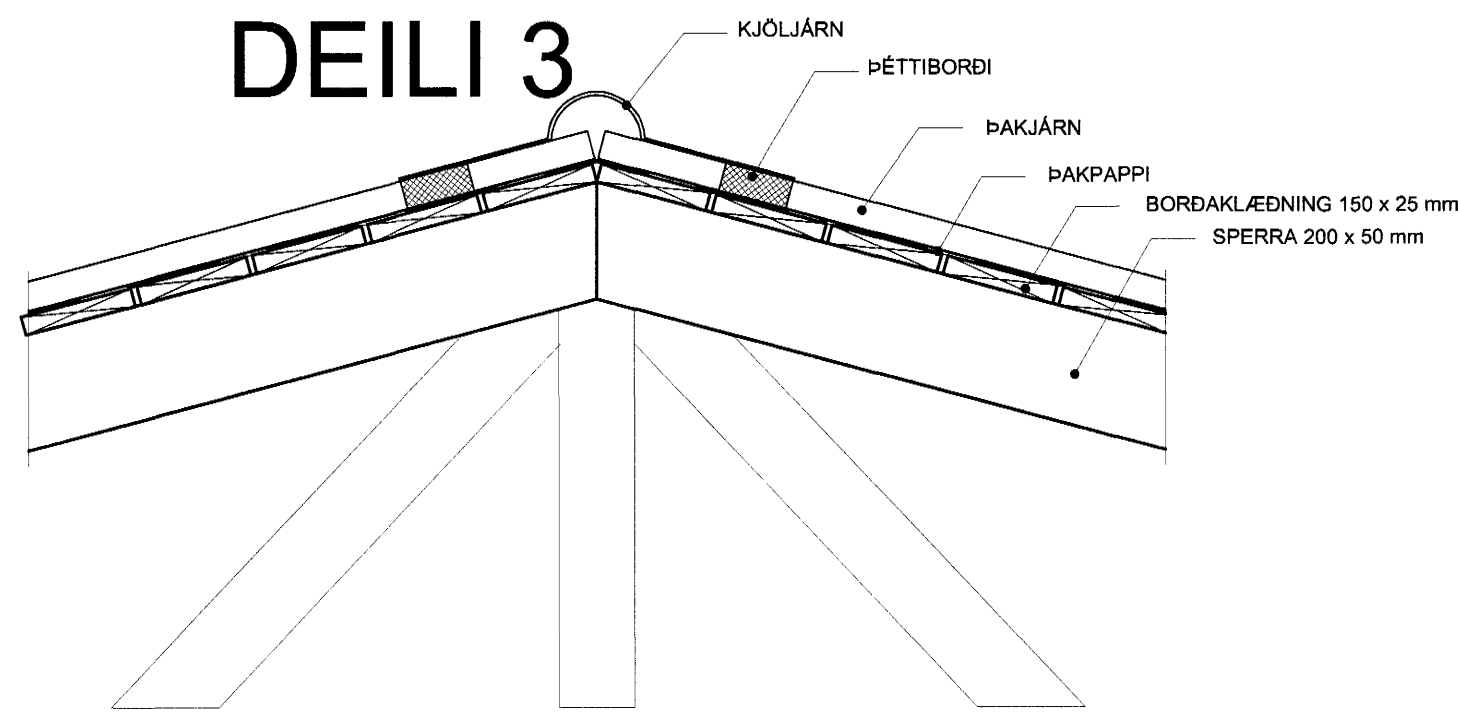
DEILI 2



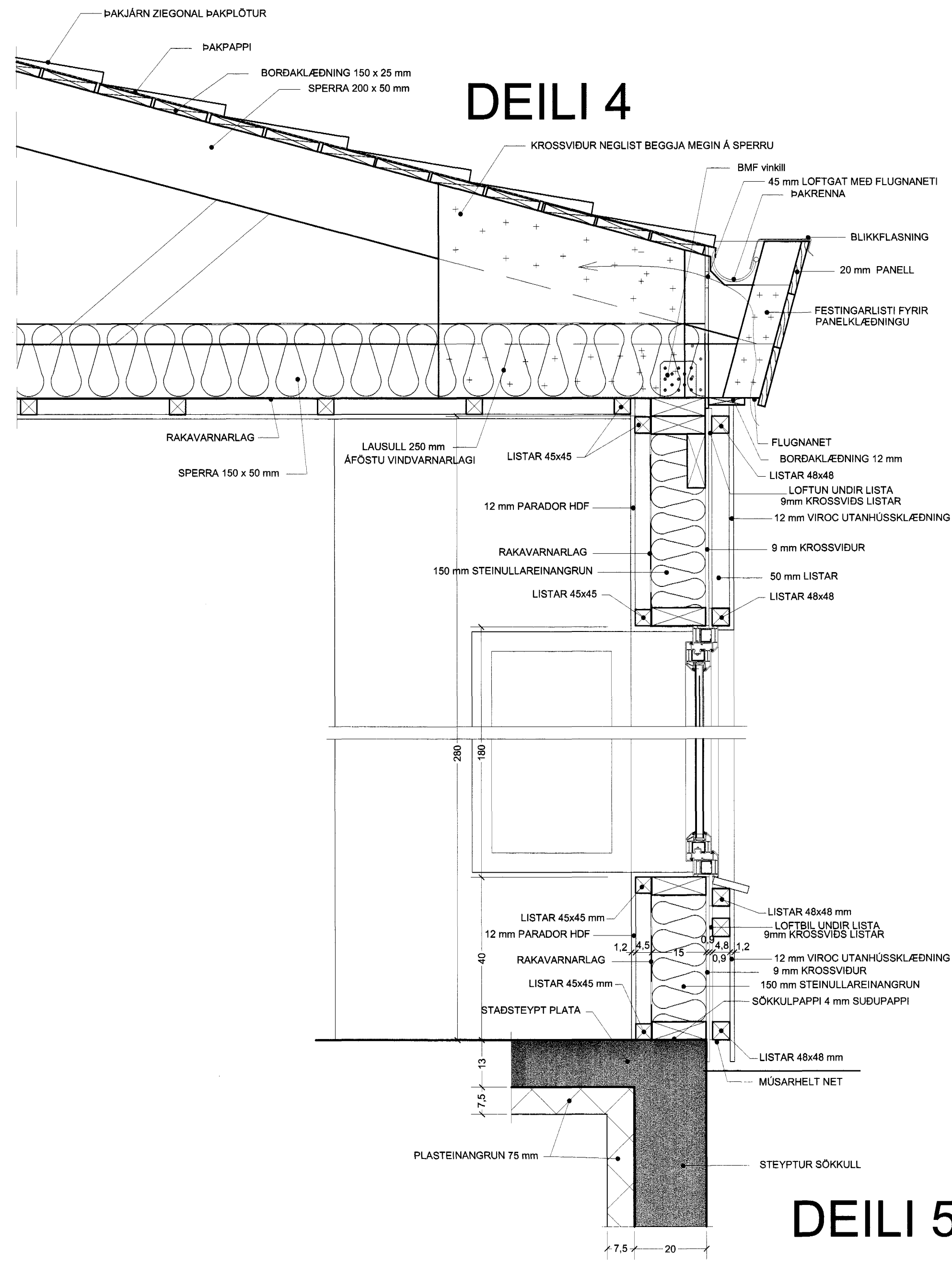
DEILI 1



DEILI 3



DEILI 4



DEILI 5

TÁKN

- GN = Niðurfall
- LR = Lofttræsting
- PK = Póstkassar
- NL = Neyðarljós
- VLR = Vélknúin lofttræsting
- R = Reykskjarni
- ÚT = Merktur útgangur
- ♿ = Bilastæði fyrir fallaðra

- BO = Björgunarpop
- ▶ = Felliástigi við björgunarpop
- ☉ = Brunnaslanga 20 m.

ELDVARNAMERKINGAR

- REI 60 = Berandi A60 eða B60 veggur
- EI 60 = A60 eða B60 veggur
- R60 = Þurður í 60 mínútur, t.d. sóla eða bíl.
- EI 30 = B30 hurð eða veggur
- EI 30 CS = B30 S (reykþétt og sjálflokandi)
- EI 60 CS = A60 eða B60 hurð
- E 30 = F30 gler
- ECS 30
- A = er óbrennanlegt efni
- B = er brennanlegt efni (t.d. timbur)

BREYTING

A:

TEIKNAD

GVB

MKV.

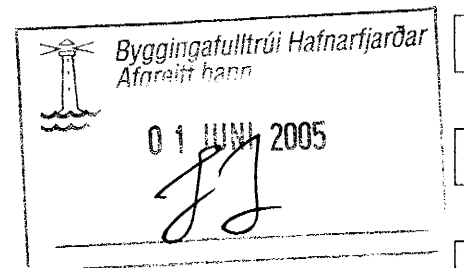
1:10

DAGSETNING

02.11.04

BLAD

3 AF 4



FURUVELLIR 37
HAFNARFJÖRÐUR

DEILI

KRISTINN RAGNARSSON arkitekt EHF.

KRISTINN RAGNARSSON - KÍ. 120944.2669 - kristinn@krark.is
TEKNIStOFAN - SUBURLANDBRAUT 4a - 108 REYKJAVÍK - ÍSLAND - S. 564.2255 - FAX 544.4225