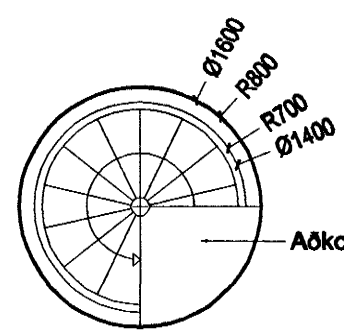


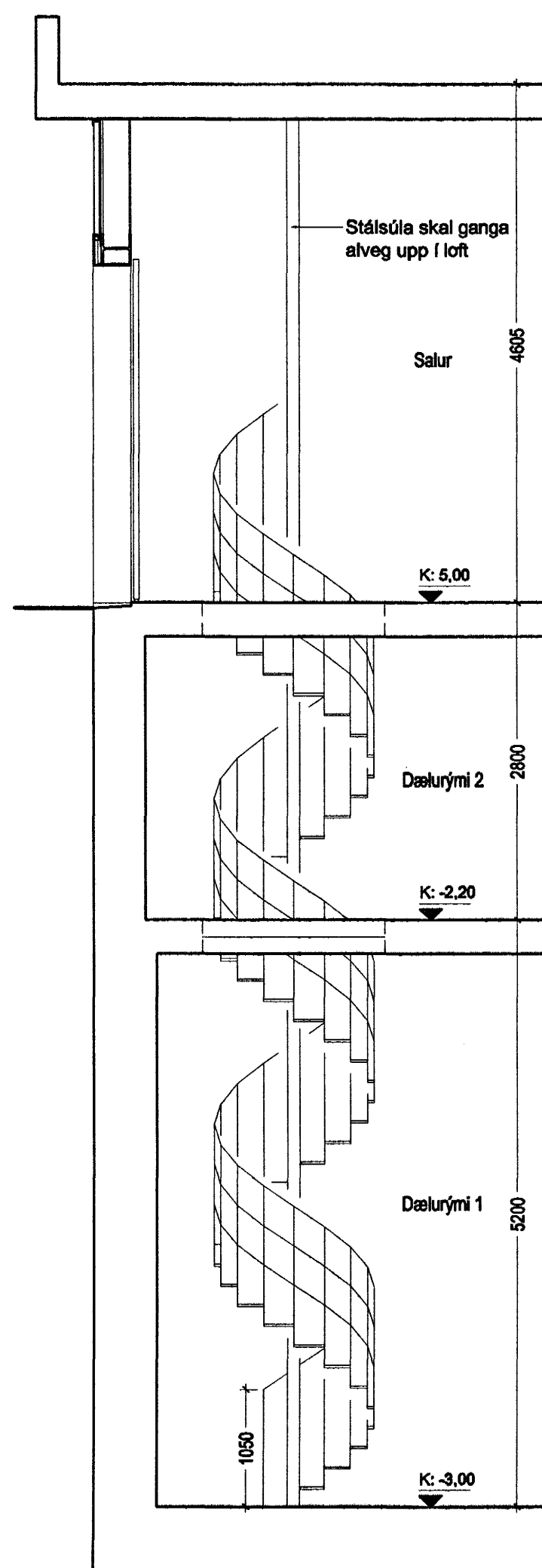
Fyrsta þrep

GRUNNMYND STIGA Á BOTNPLÖTU

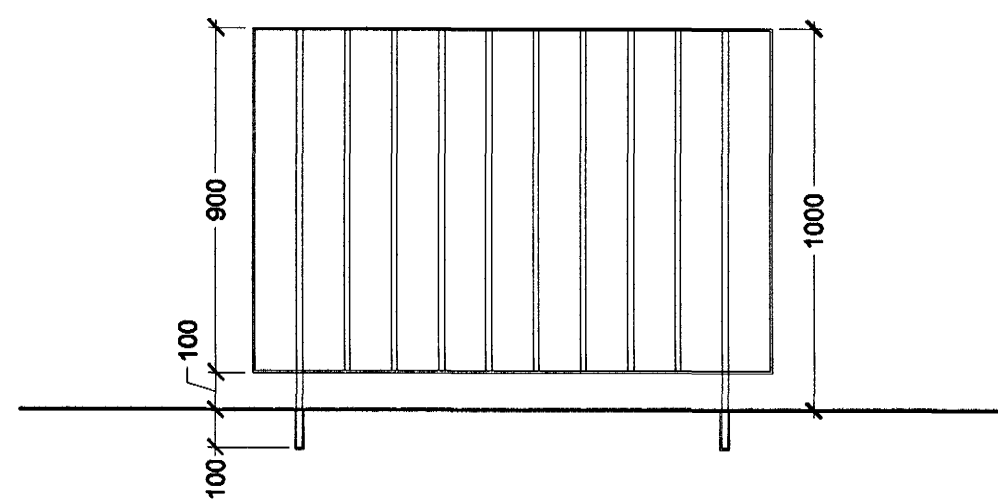


Aðkomupellur

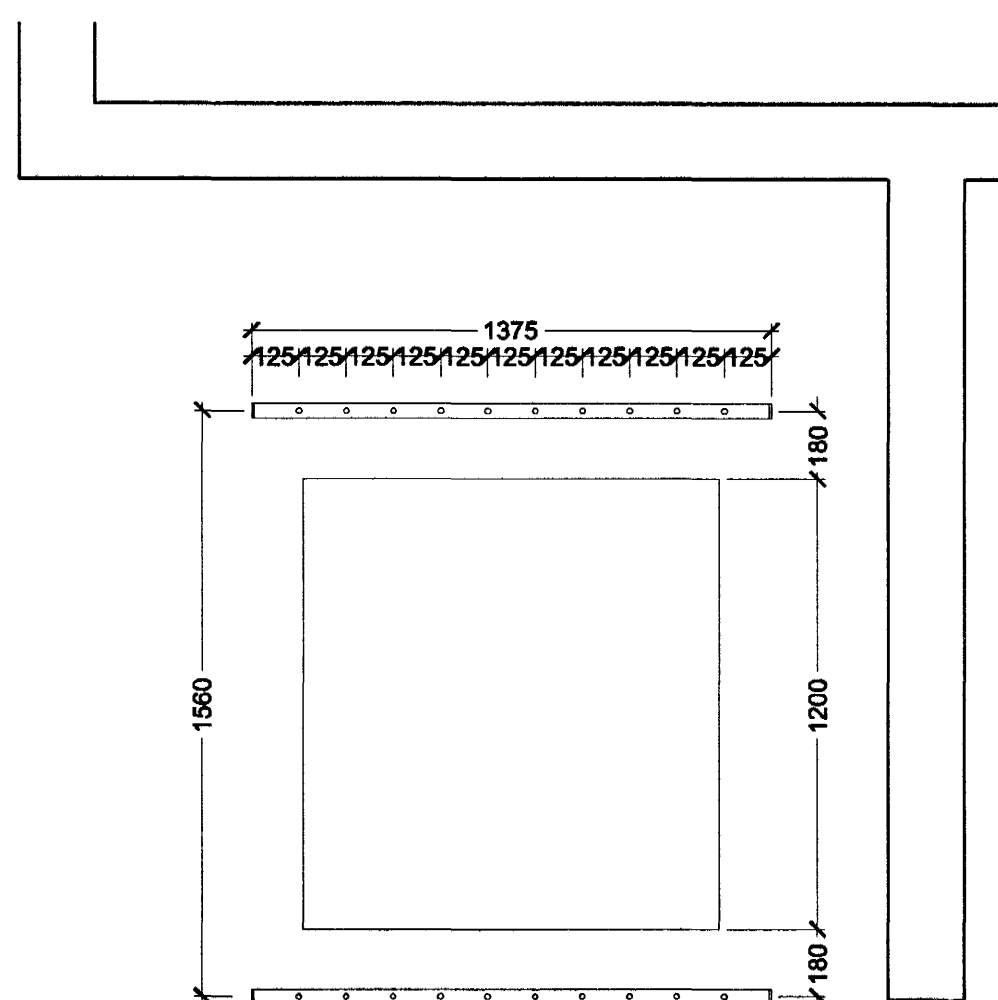
GRUNNMYND Í KÓTA 2,20 OG 5,00



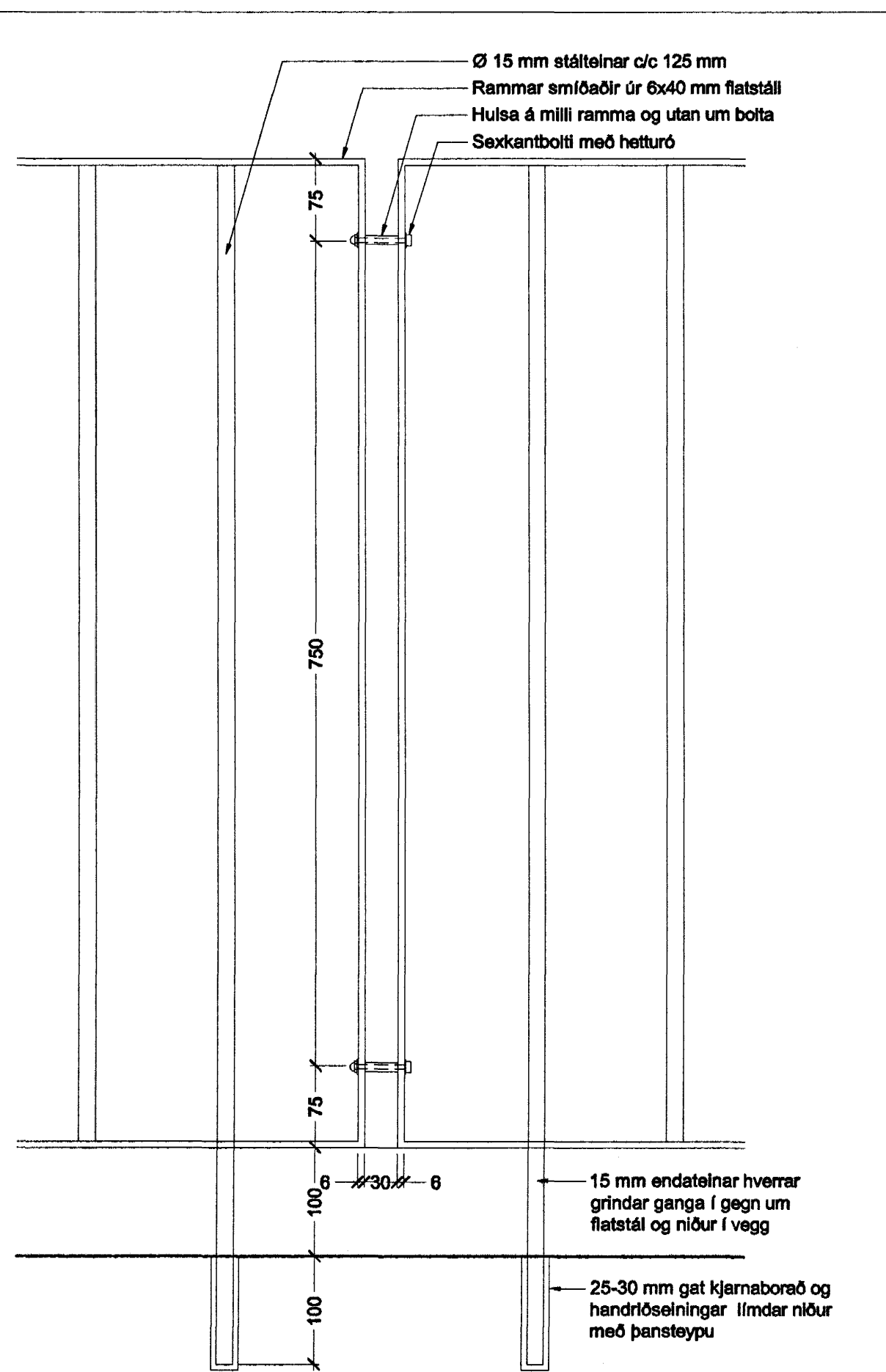
ÁSÝND HRINGSTIGA



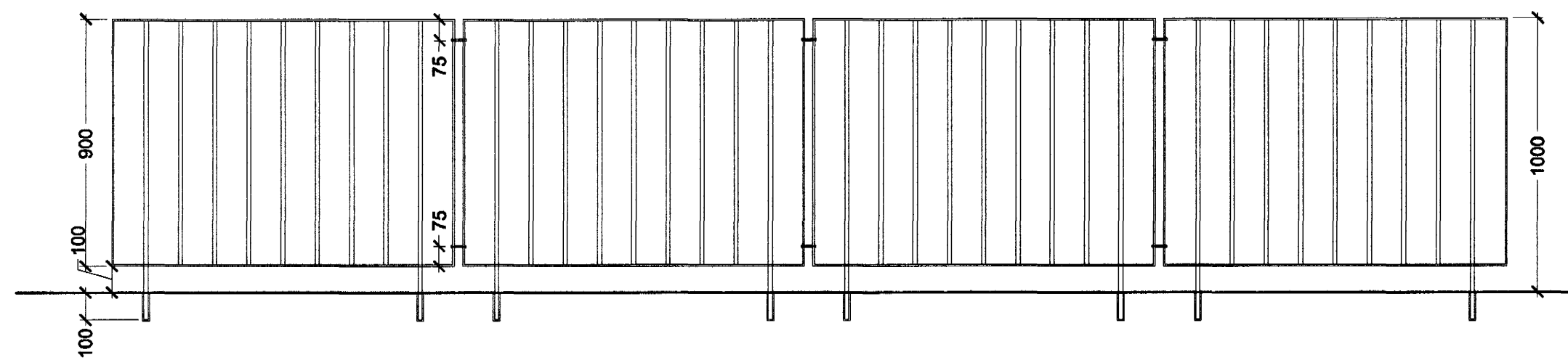
ÁSÝND HANDRÍÐS VIÐ SKOLPLÚGU



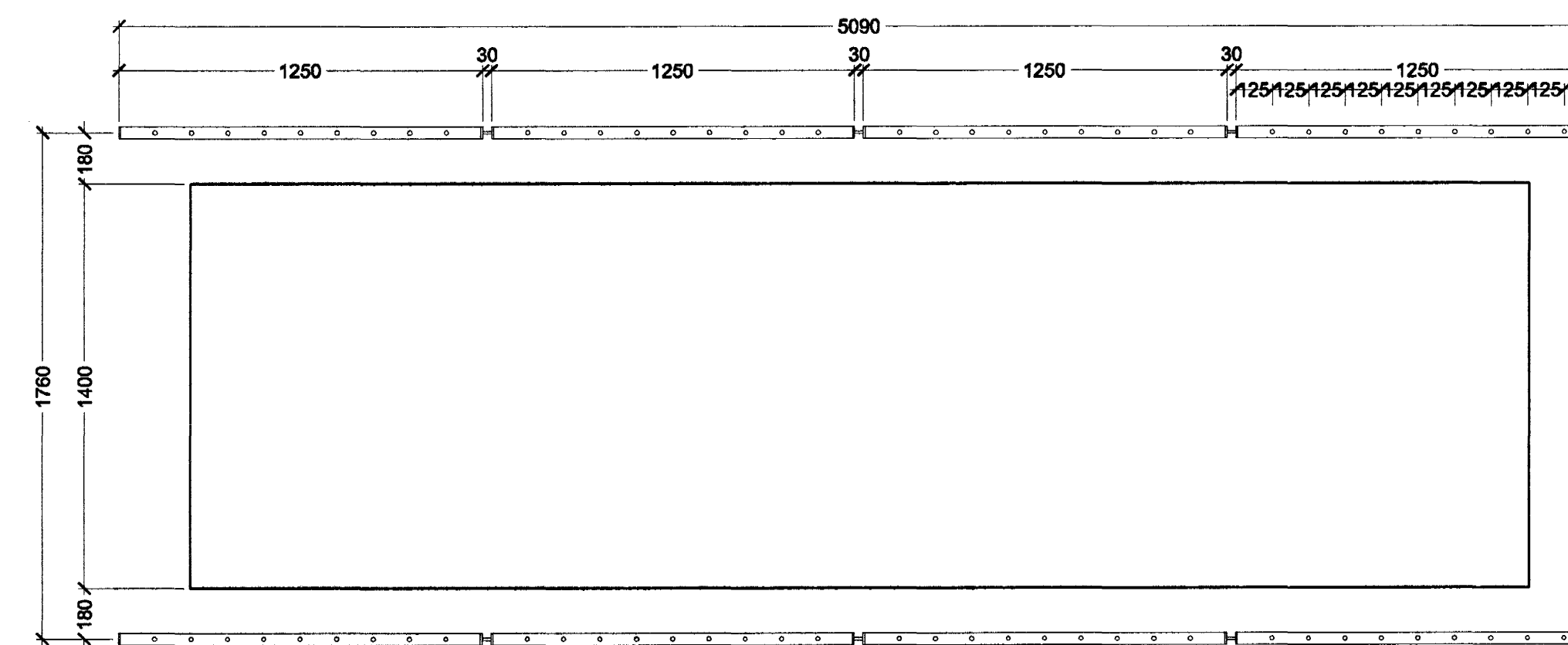
GRUNNMYND HANDRÍÐS VIÐ SKOLPLÚGU



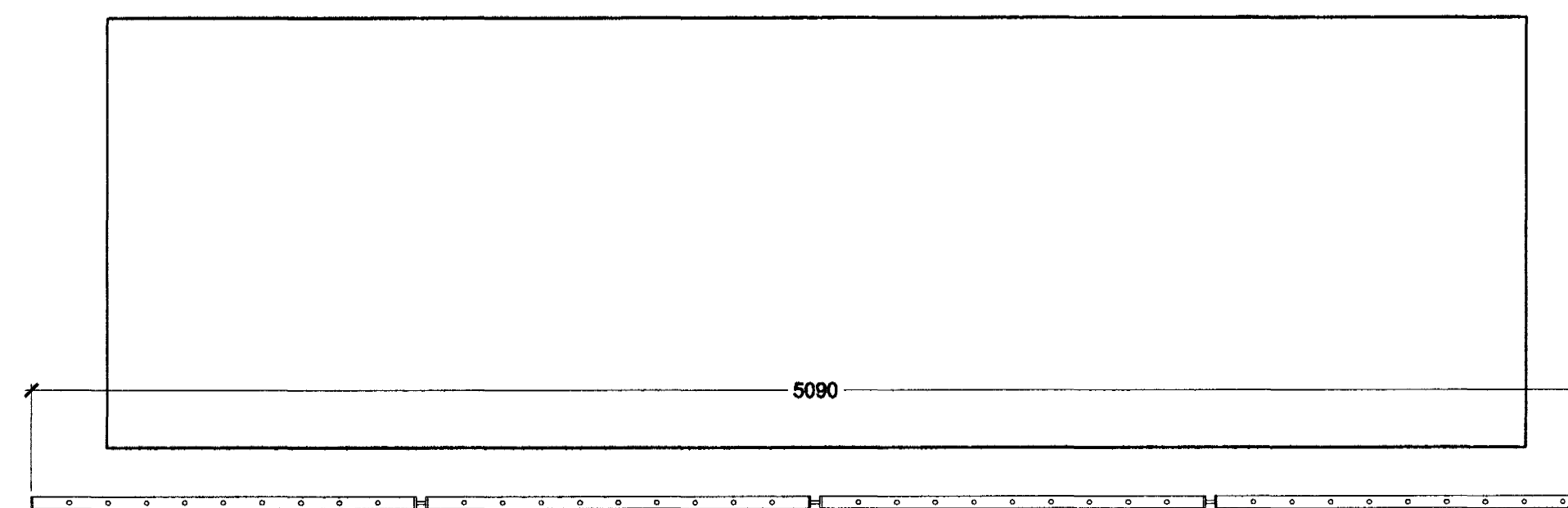
ÁSÝND HANDRÍÐS í mkv. 1:5



ÁSÝND HANDRÍÐS VIÐ DÆLULÚGUR

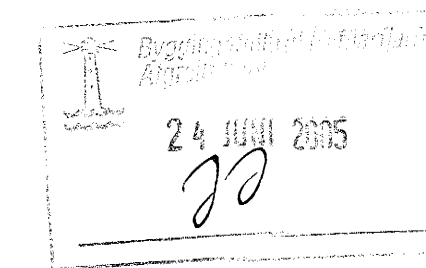


GRUNNMYND HANDRÍÐS VIÐ EFRÍ DÆLULÚGUR



GRUNNMYND HANDRÍÐS VIÐ NEDRI DÆLULÚGUR

ATH.
- ALLT STÁL OG FESTINGAR SKAL
VERA HEITGALVANHÚÐAÐ



Frávelda Hafnarjarðar
SKOLPDÆLUSTÖÐ
Norðurbakki 27, stgr. 0403
VERKTEIKNING

STIGI OG HANDRÍÐ - INNHÖSS
MKV.: 1:50, 1:20, 1:5
DAGS: 15.03.2005
TEIKNAR: JBE
SKRÁ: 0403_(34)4.01.dwg

(34)4.01
Frumútgáfa

Jón Ólafur Ólafsson, FAI
kt: 090958-4099

Sigurður Einmason FAI
kt: 110457-2789

Sigurður Hardarson FAI
kt: 030446-3999

BATTERÍÐ
ARKITEKTAR

kt: 521291-1259
Trónuhraun 1
220 Hafnarhöfði

S: 54 54 700 F: 54 54 701
Netfang: batteri@arkitekt.is
Heimasíða: www.arkitekt.is

© BATTERÍÐ EHF
ÖLL AÐRIT OG AFTRUN TÖRNINGAR AÐ HLUÐA EÐA Í HÉLD ER HÁÐ SÖFULEGU LEYRI HÖFUNDAR

G:\Vrk\2004\0403_Skolpdælustöð\0403-34\01.dwg, 0403-34\01_12.12.2005 14:28:48, 1:1