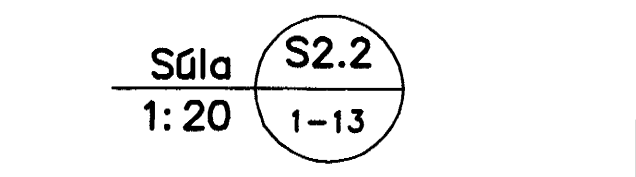
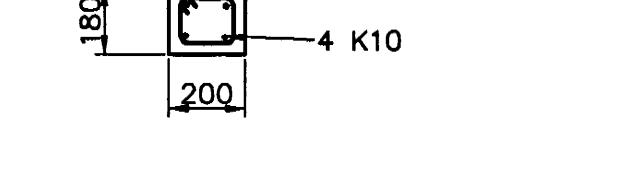
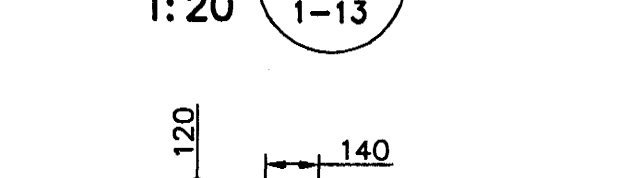
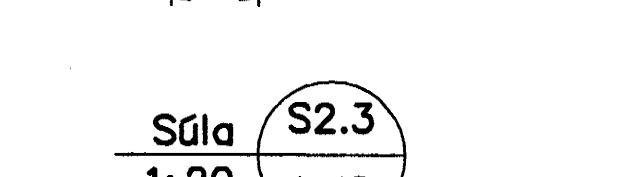
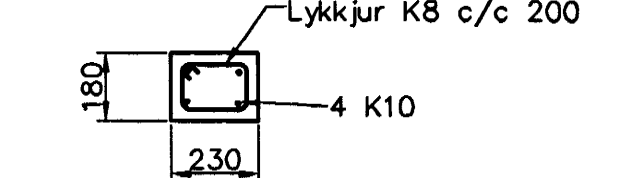
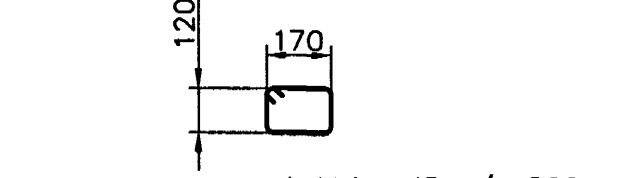
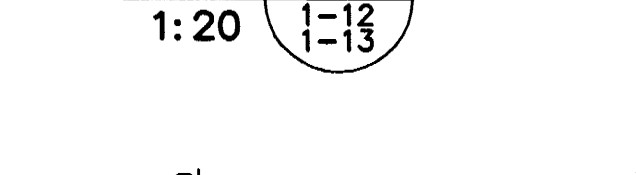
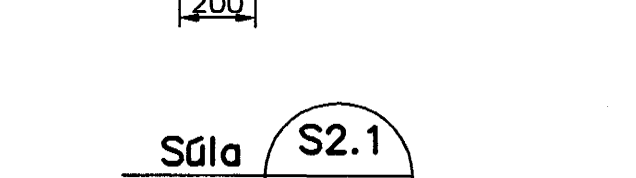
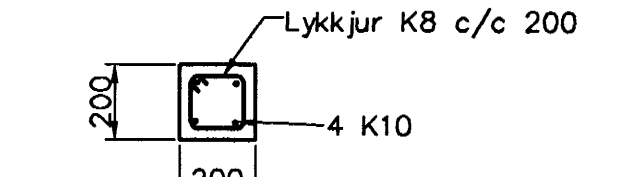
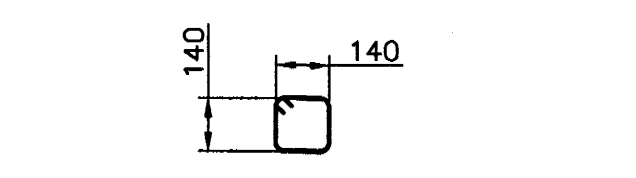


Lykilmynd



Skýringar

Almennar skýringar sjá blað 00-01
 Steypa
 Brotþolsflokkur: C25/28 samkv. ENV 206 (250)
 Vatnssementtala: skal vera minni en 0,55
 Loftmagn: 5-7%
 Sigmál: 60-80 mm

Alog 6 plötur
 Eiginþyngd: 5,5 kN/m²
 Líttir milliveggir: 1,0 kN/m²
 Notaðlag 6 plötur: 1,5 kN/m²
 Notaðlag 6 stiga og svalir: 3,0 kN/2

Byggingatæknifráfarar
 21. JUNÍ 2005

Útgáfa	Breyting	Dagsetning	Hannað
Sveinbjörn Hinriksson Byggingatæknifráfarar Kt. 160051-2529 Brekkingutúti 8 Hafnarfirði Sími: 555-4008, 861-0851 Netfang: sveinh@si.is		Staður Eskvillir 3 Hafnarfirði	
Hannað / Takið		Kvað 1:50	Teikn.nr. 44-04
		Dagsetning 21.6.05	Teikn.nr. 1-13