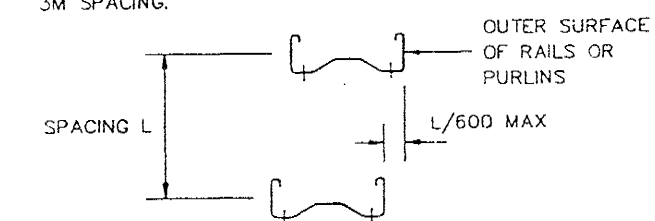


WALL PANELS  
DW1000/100/D -  
METALLIC SILVER

STEELWORK TOLERANCES FOR COMPOSITE PANELS


1. THE DISTANCE BETWEEN THE PLANES OF ADJACENT SUPPORTS MUST NOT BE MORE THAN L/600 WHERE L IS THE DISTANCE BETWEEN THE SUPPORTS, E.G. 5mm FOR A 3M SPACING.



2. NO SUPPORTS SHOULD BE MORE THAN ±10mm FROM THE SPECIFIED PLANE OF THE CLADDING. WHERE THESE VALUES ARE EXCEEDED THE PANELS MAY STILL BE USED, BUT THEIR LOAD CAPACITY MAY BE REDUCED AND THE BUILDING APPEARANCE MAY BE IMPAIRED.

IF PANELS ARE BEING FIXED DIRECT TO ANYTHING OTHER THAN COLD ROLLED STEEL SUPPORTS (E.G. HOT ROLLED STEEL, CONCRETE ETC.) PLEASE CONSULT WARD TECHNICAL SERVICES REGARDING FRAMEWORK TOLERANCES.

Verkfæðistofa  
Hauks Áróssonar ehf.  
Dalveg 18, 201 Kópavogur

E			
D			
C			
B			
A			
DATE	DRAWN	DESCRIPTION OF REVISION	
 <p>ATLAS WARD BUILDING SYSTEMS Ltd. SHERBURNE TOWN NORTH YORKS. ENGLAND, YO17 8PZ Tel: 01944 710000 3 JUN 2005 Tele: 52354 WARD Telefax: 01944 710061</p>			
PROJECT STEINHELLA 10		SCALE 1:125	TEAM
DRAWING TITLE SIDEWALL PANEL PLAN		QUOTE No./PROJECT No.	
DRAWN A		DATE 28/04	CHECKED SAR
DATE 6/8/04		DRAWING No. 603	
CONTRACT No. 04001		REVISION	