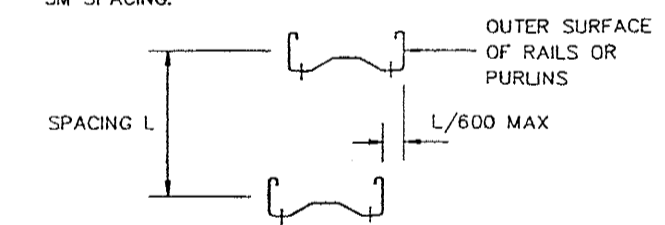


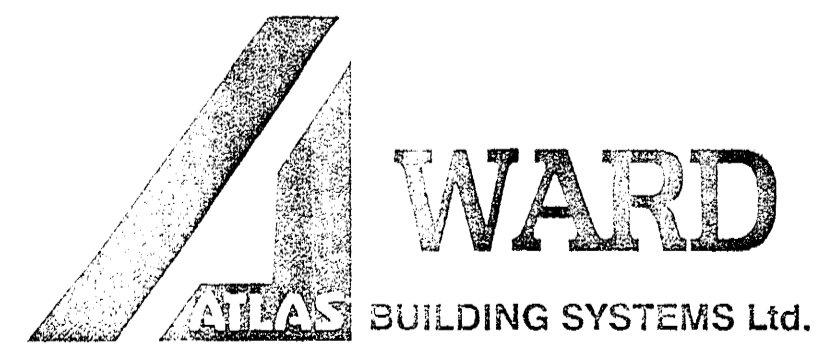
WALL PANELS
DW1000/00/D -
METALLIC SILVER

STEELWORK TOLERANCES FOR COMPOSITE PANELS

1. THE DISTANCE BETWEEN THE PLANES OF ADJACENT SUPPORTS MUST NOT BE MORE THAN L/600 WHERE L IS THE DISTANCE BETWEEN THE SUPPORTS, E.G. 5mm FOR A 3m SPACING.
2. NO SUPPORTS SHOULD BE MORE THAN ± 10mm FROM THE SPECIFIED PLANE OF THE CLADDING. WHERE THESE VALUES ARE EXCEEDED THE PANELS MAY STILL BE USED, BUT THEIR LOAD CAPACITY MAY BE REDUCED AND THE BUILDING APPEARANCE MAY BE IMPAIRED.



IF PANELS ARE BEING FIXED DIRECT TO ANYTHING OTHER THAN COLD ROLLED STEEL SUPPORTS (E.G. HOT ROLLED STEEL, CONCRETE ETC.) PLEASE CONSULT WARD TECHNICAL SERVICES REGARDING FRAMEWORK TOLERANCES.

E				
D				
C				
B				
A				
	DATE	DRAWN	DESCRIPTION OF REVISION	
	 <p>ATLAS WARD BUILDING SYSTEMS LTD. SHERBURN/MALTON, NORTH YORKS., ENGLAND, YO17 8BA Tel: 01944 710000 Telex: 52354 WARD Fax: 01944 710007</p>			
	PROJECT		SCALE	TEAM
	STEINHELLA 10		1:100	
	DRAWING TITLE			
	GABLE WALL PANEL PLAN			
	DRAWING No.			REVISION
	DATE	CHECKED	DATE	
	2/8/04	SAR	6/8/04	
	CONTRACT No. 04001			
	QUOTE No./PROJECT No.			