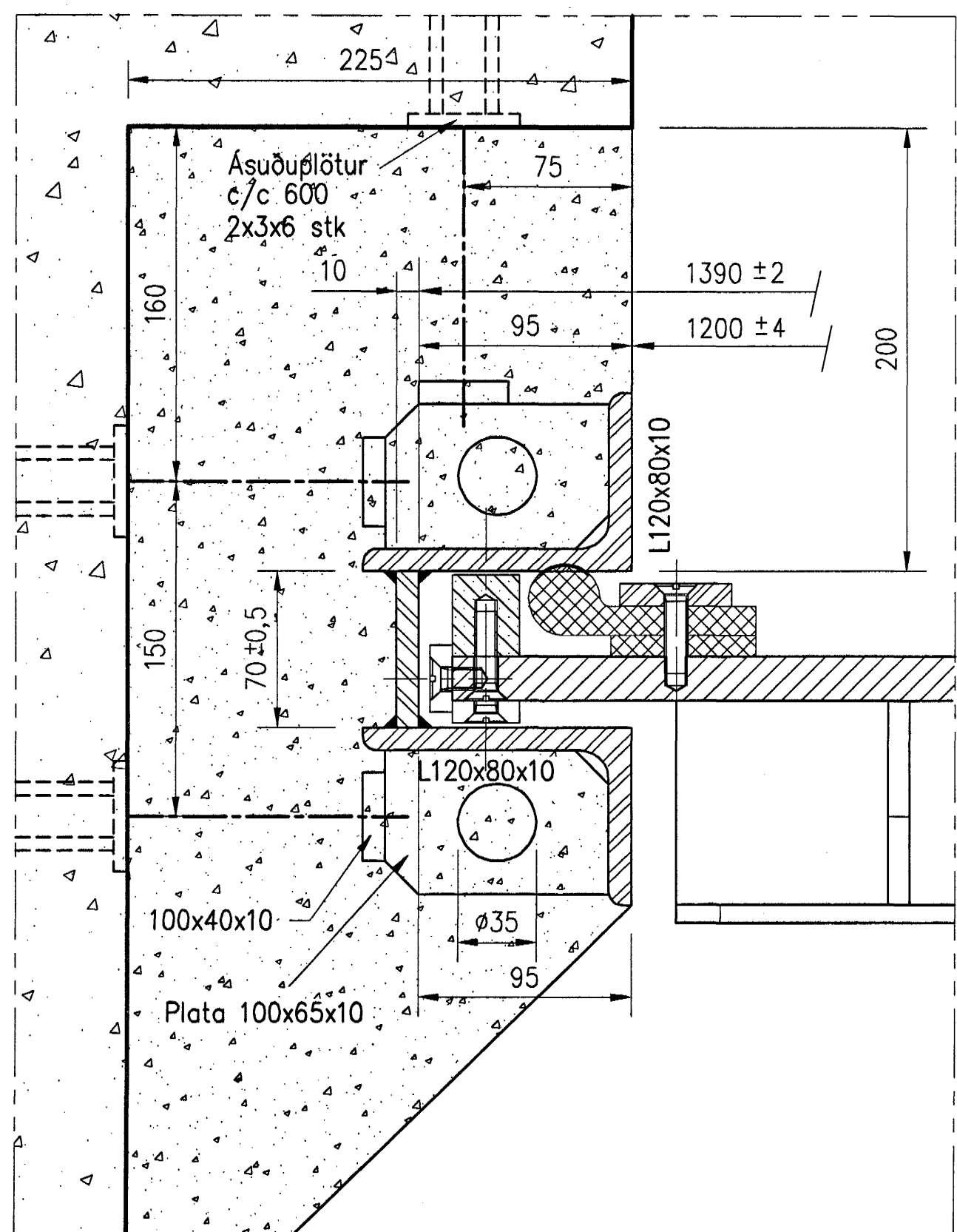
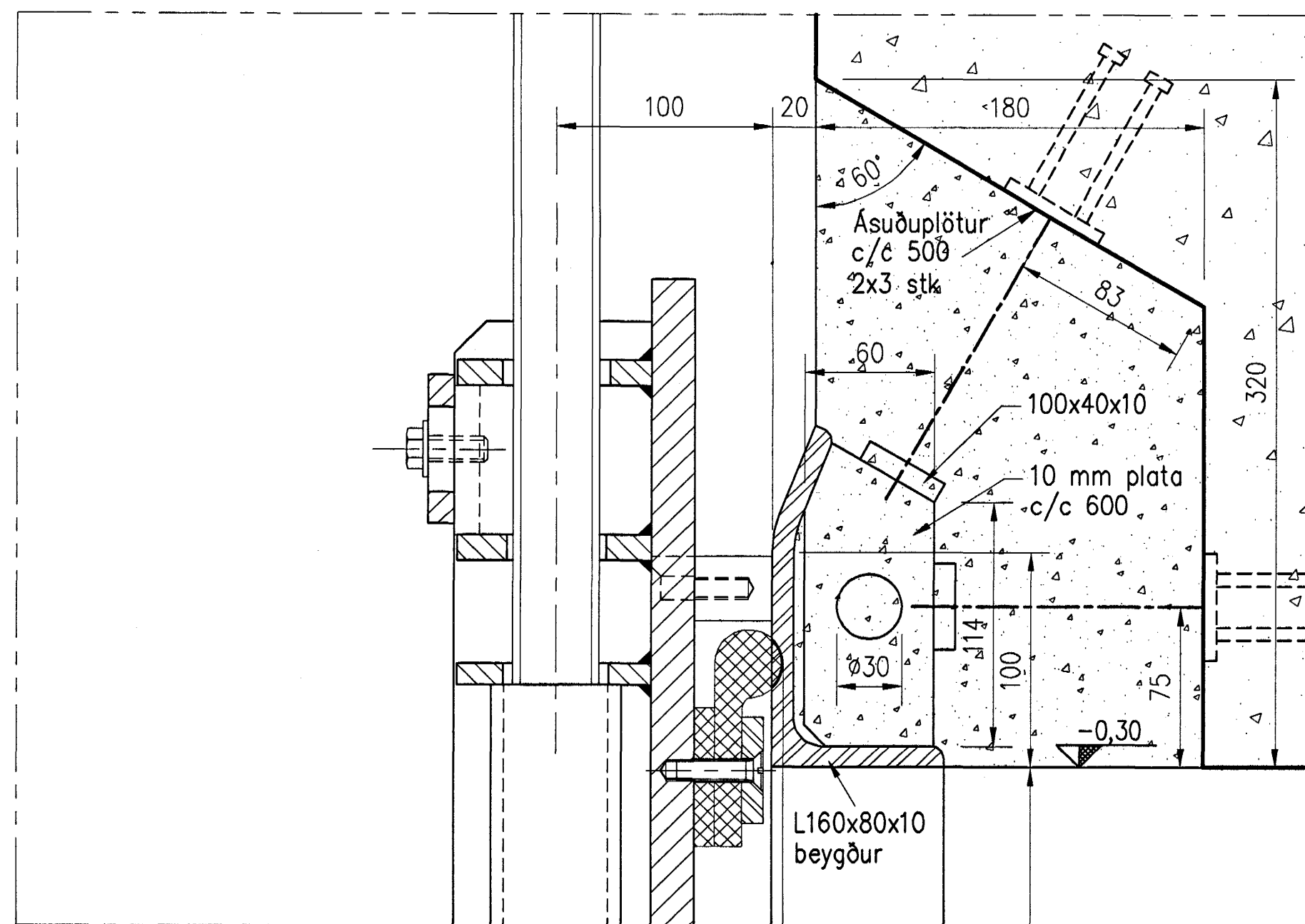


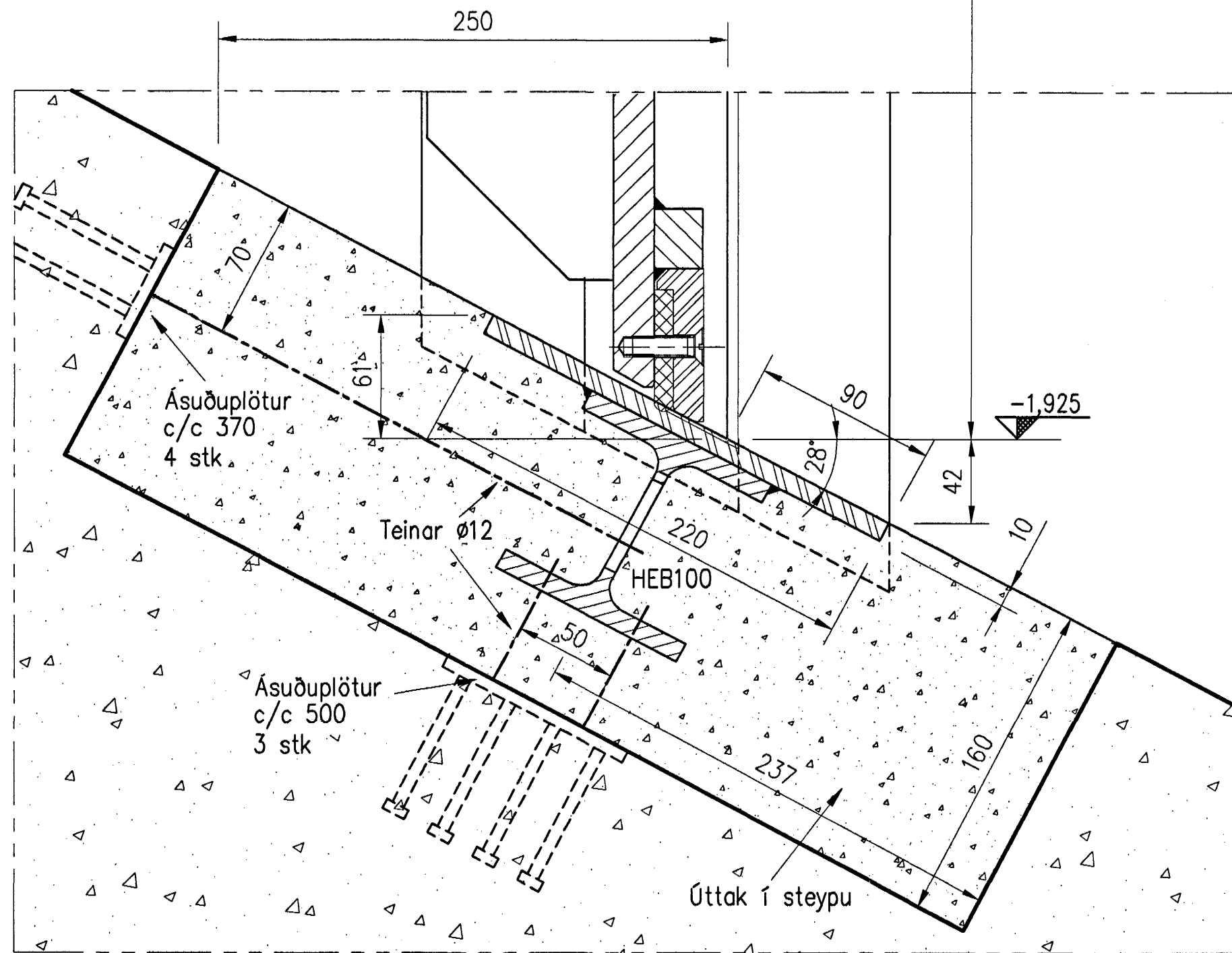
E SNID E-E
7.52 1:2,5



F SNID F-F
7.52 1:2,5



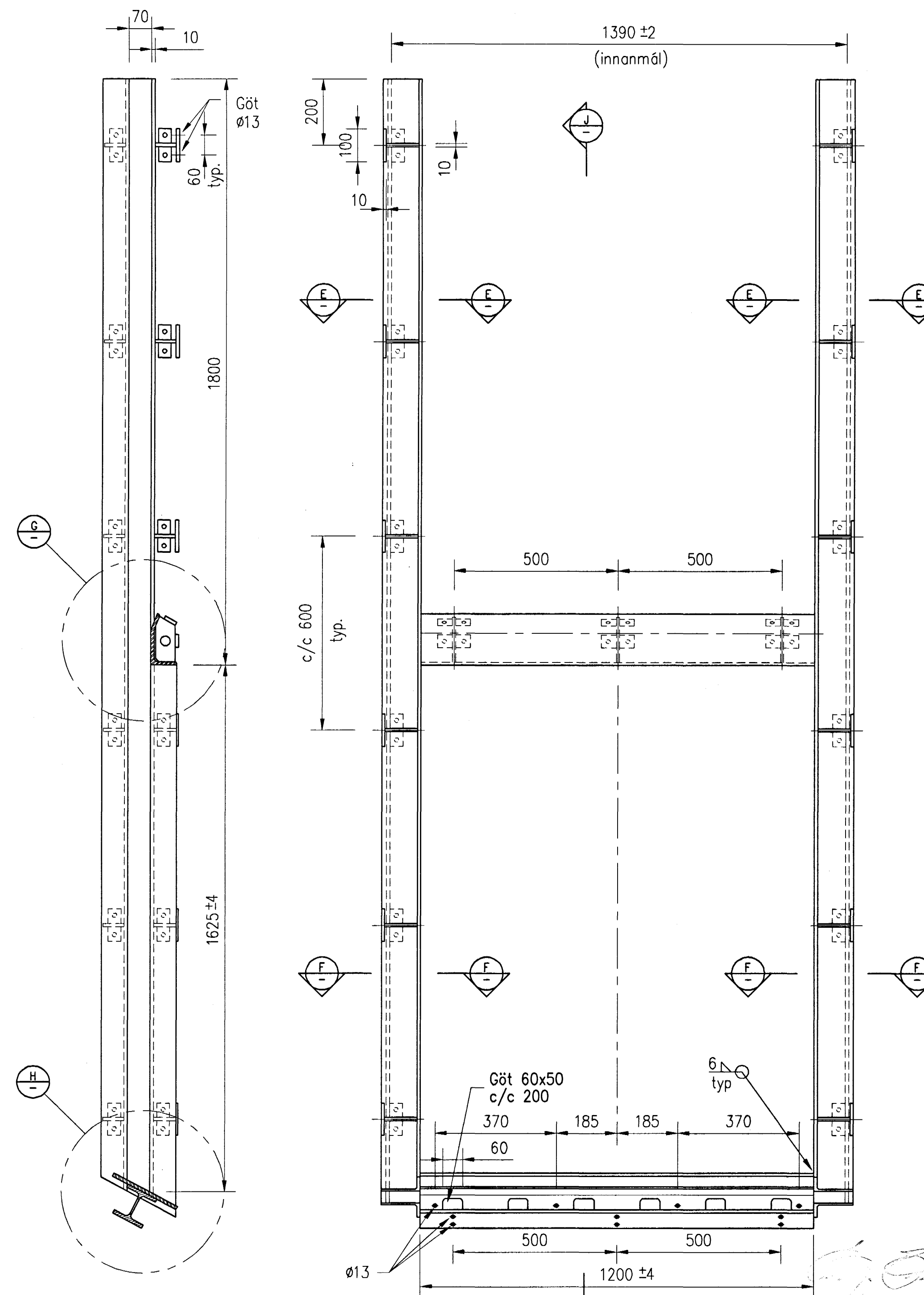
G SNID G-G
7.52 1:2,5



H SNID H-H
7.52 1:2,5

IS-51
--

Eftirfarandi vikmál skulu gilda eftir uppsetningu (sjá nánar í verklýs.):
 Þéttingarflétir skulu mynda plan +/- 1 mm
 Sérhver þéttingar- og stýringarflötur skal vera flatur +/- 0,3 mm
 Þéttingarflétir skulu mynda rétthyrning +/- 1 mm
 Aferð þéttingarflata: $\nabla\nabla\nabla$ ($\frac{0,8}{\sqrt{}}$) - Aferð stýringarflata: $\nabla\nabla$ ($\frac{3,2}{\sqrt{}}$)

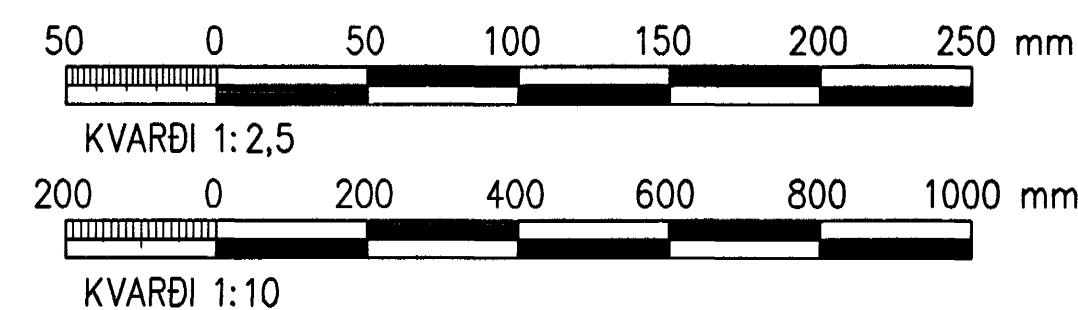


J SNID J-J

LOKURAMMI AÐ AFTAN

SKÝRINGAR

Öll mál eru í millimetrum
 Suður skulu hafa a-mál minnst 5 mm
 Efni skal vera AISI 316L



| | | | |
|---|--|--------------|------------------|
| A | 2005-05-10 | VERKTEIKNING | ÓE |
| Br. | Daga. | Breyting | Br. Sp. |
| HAFNARFJARÐARBÆR FRÁVEITA HAFNARFJARÐAR STRANDGÖTU 11 220 HAFNARFJARÐUR Sími: 585 5665 Fax: 583 5639 | | | |
| DÆLUSTÖÐ VIÐ NORÐURGARÐ RENNILOKA LOKURAMMI | | | |
| Nr: | | | |
| VST Verkfræðistofa Sigurðar Thoroddsen hf. Armögla 4, 108 Reykjavík, tel: 611276-0289 Sími: 569 5000, fax: 569 5010, veffang: www.vst.is | | | |
| Hönnuð: | GP6 | Teknuð: | GP6 |
| Yfirforð: | SIÓ | Sambýskt: | WLF |
| Teknuð: | K:\2003.02\07\tekn\lagm\pipu\M-754.dwg | Kl: | 210444-7269 |
| Msk: | 1:10 | Bláskrá: | A1 |
| Daga: | MARS 2005 | Nr: | 2003.0207 7.54 A |