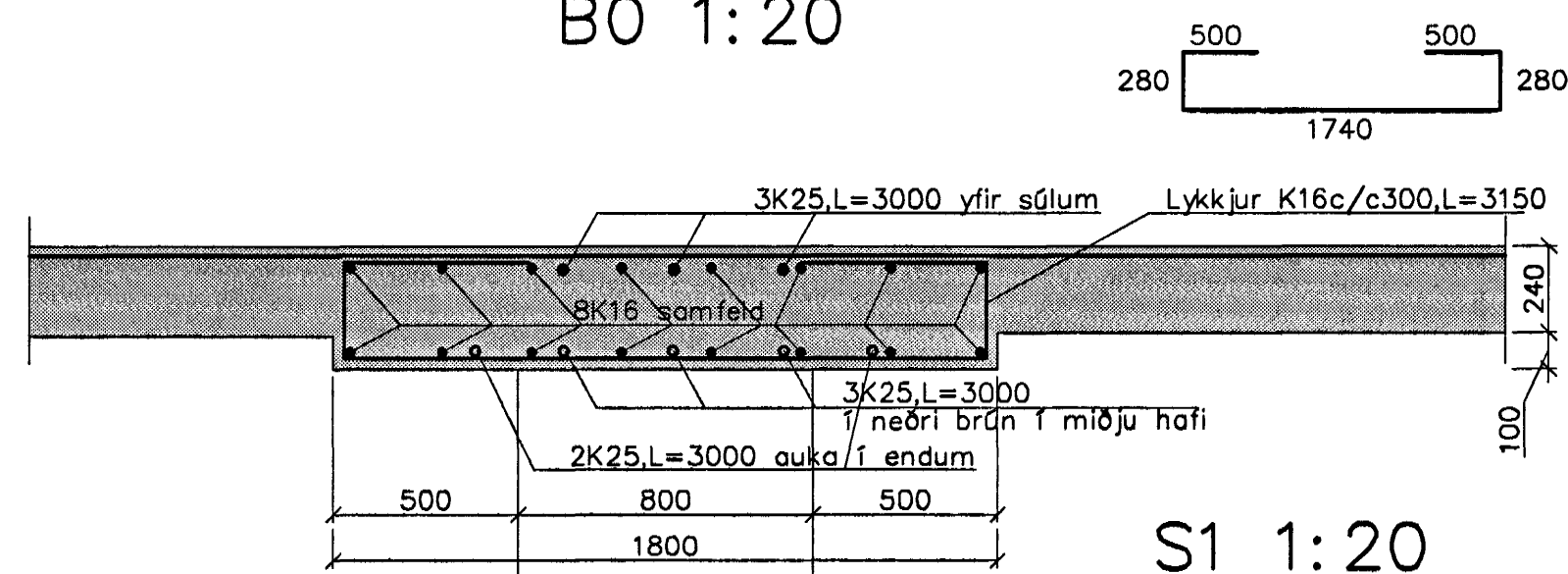
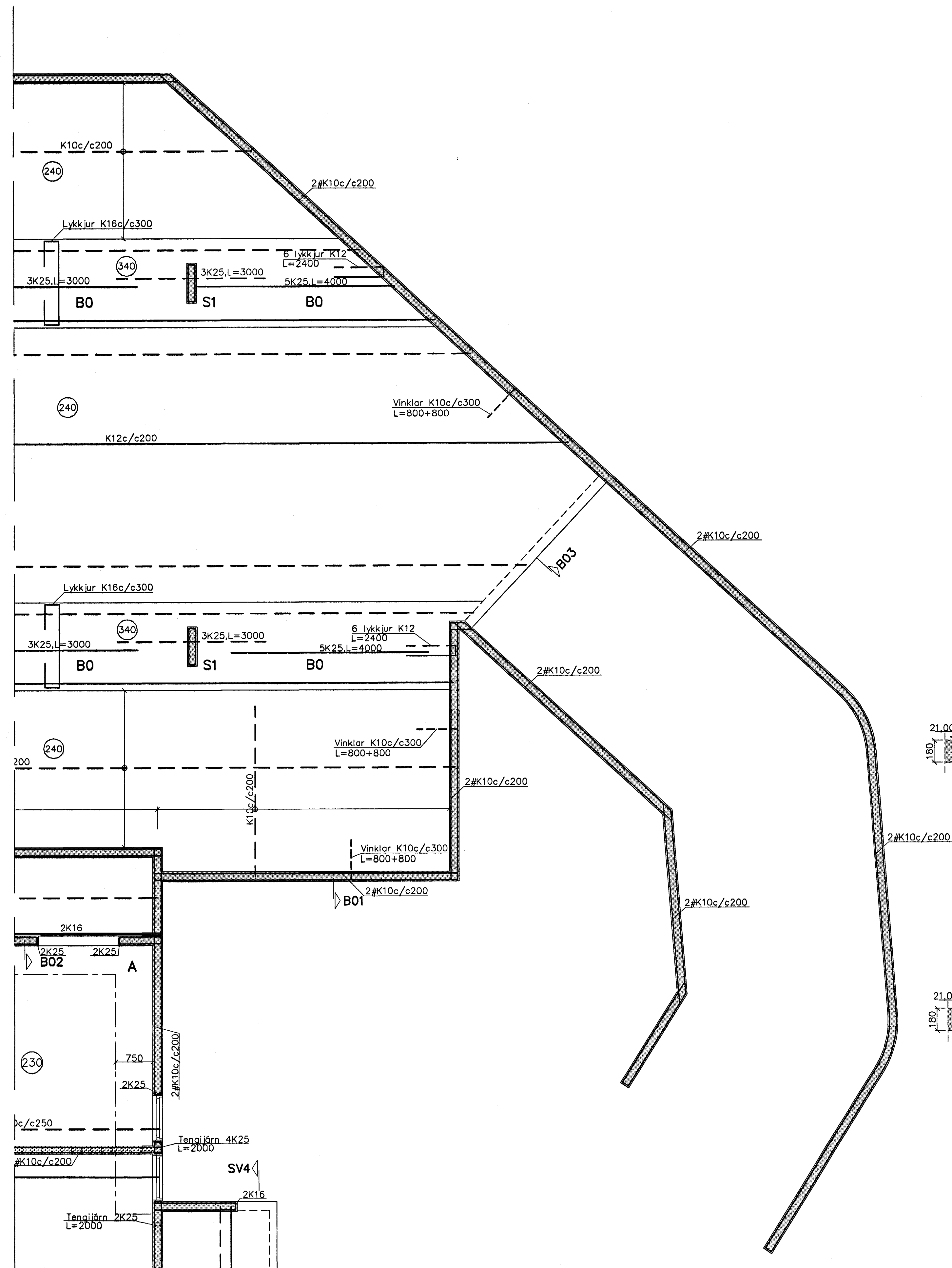
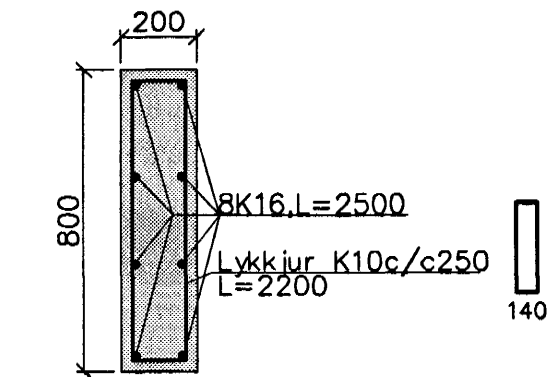


GRUNNMYND KJALLARA OG LOFT 1:50



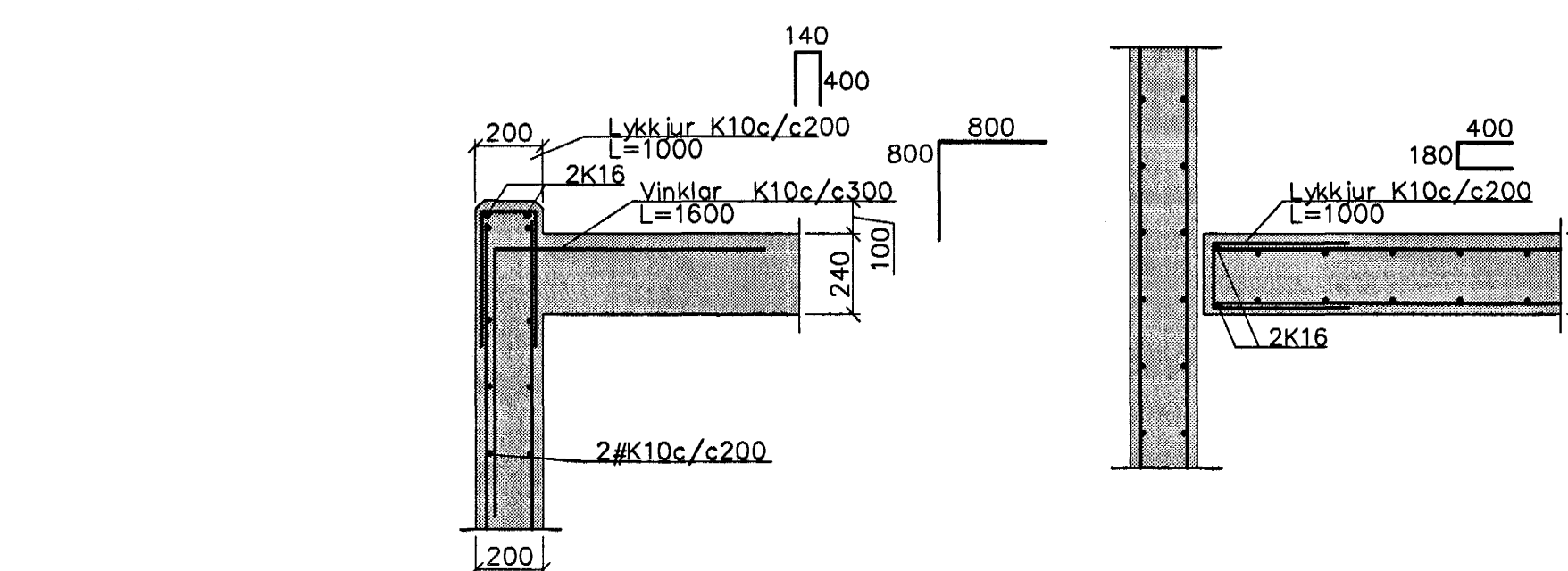
S1 1:20



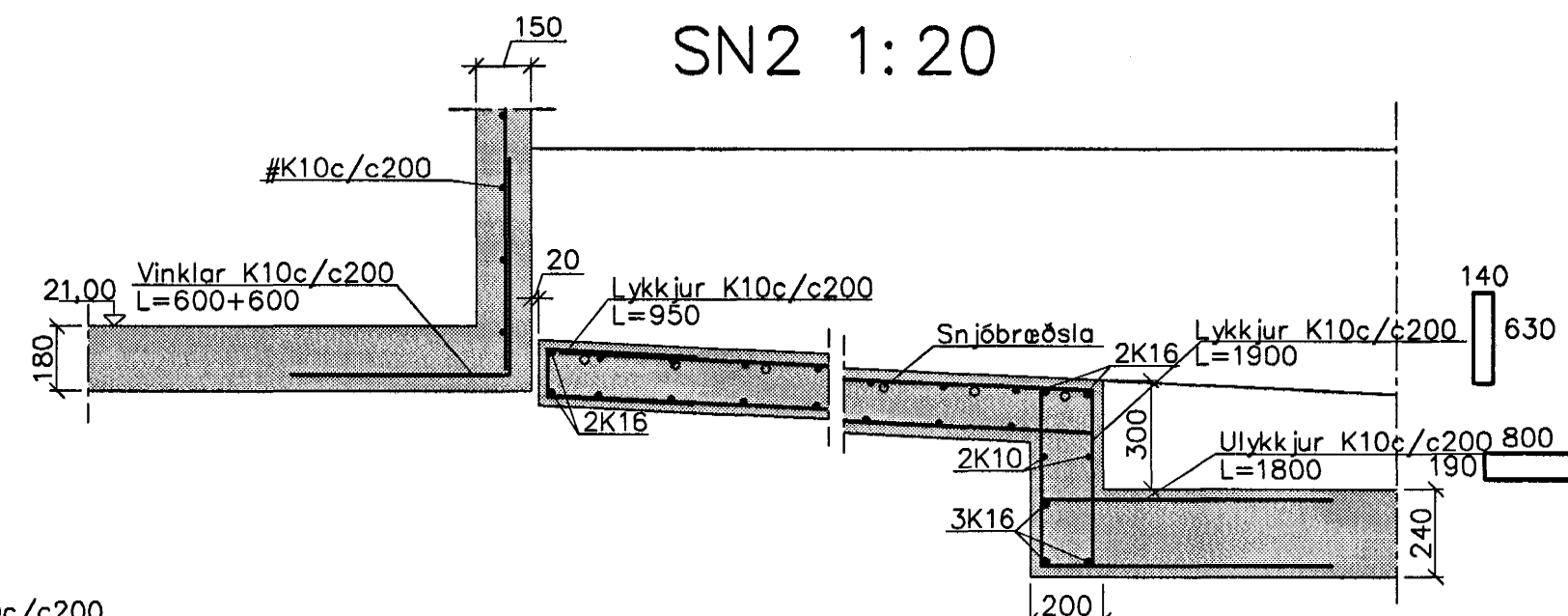
B02 1:20

B03 1:20

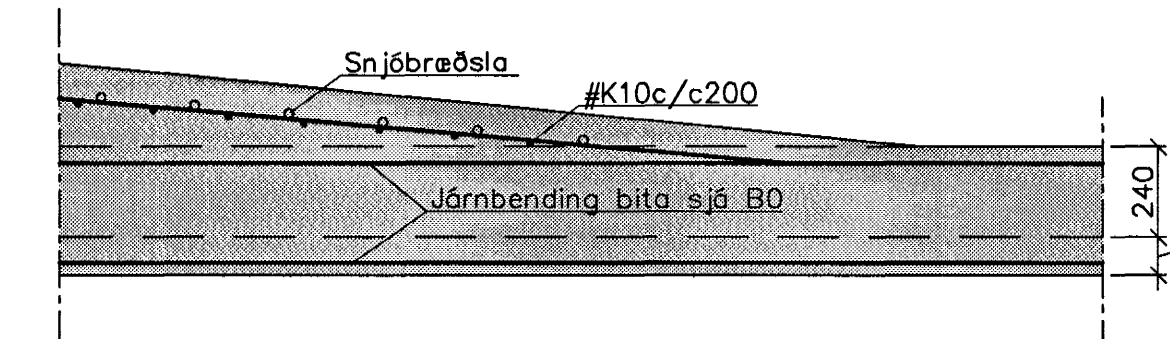
B01 1:20



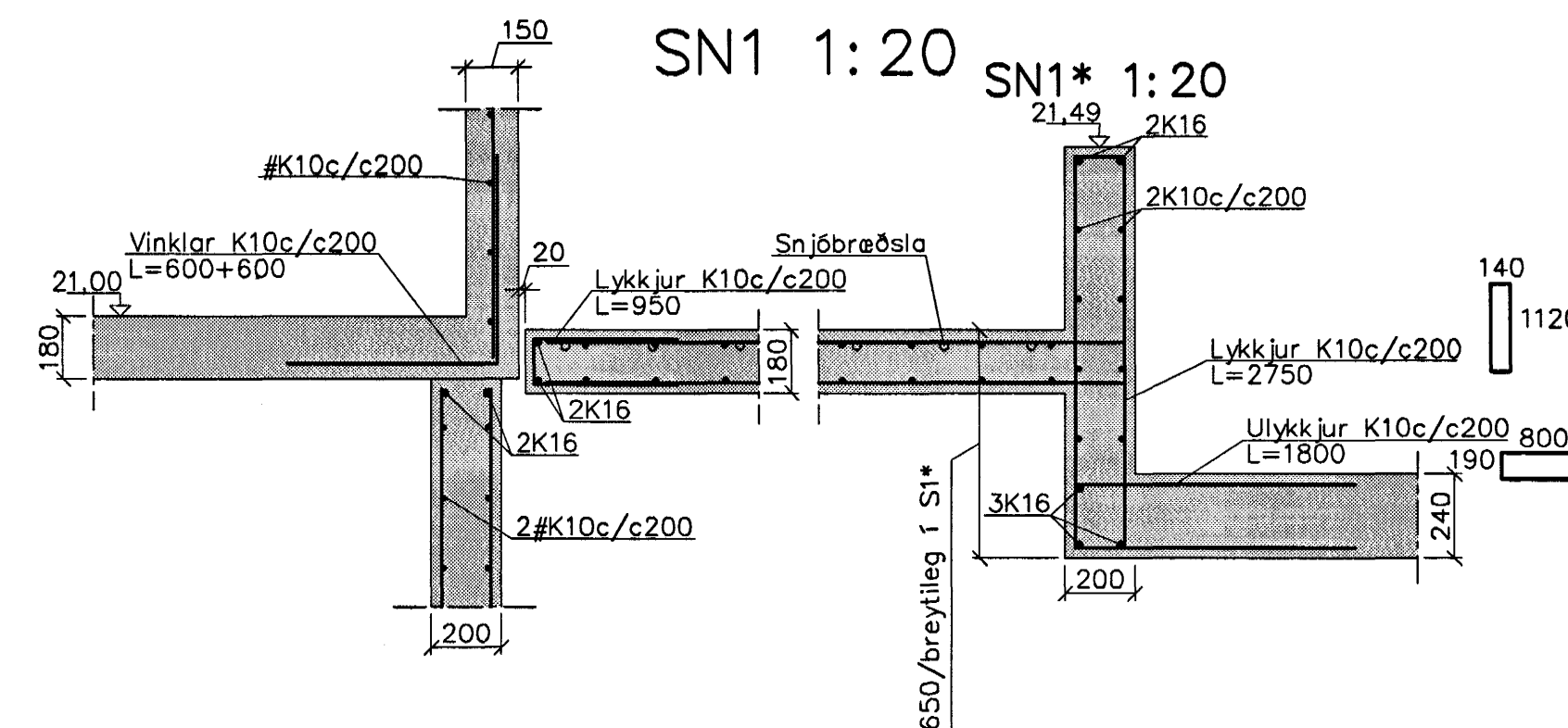
SN2 1:20



SN3 1:20



SN1 1:20



SN1* 1:20

Steypa S300.
 Sement > 350 kg/m³, vatnssementstala (v/s) <0.45, loftinnihald 5-6%, sigmál 80-100mm.
 Steypa og steypustyrktarstál KS40 skv. IST-14/DS-411.
 Steypuhúla á jörnum:
 veggir úti 30mm
 veggir inni 20mm
 plötur úti 30mm
 plötur inni 15mm
 bitar 25mm

Meðfram dyrum, gluggum og opum komi 2K16, er nái minnst 800mm. út fyrir brúnir opa.
 A: merkir 2#K10c/c500, L=1500mm, í efri og neðri brún plötu.
 Hönnun og framkvæmd verksins skal vera í samræmi við gildandi staðla og reglugerðir.

Sjá snið SN1-SN3 á bl. BK02

Samþykkt þann 18 FEB. 2005

Byggingafræðingur í Hafnarfirði
 F.H. Sigurbjörns Helldarsson

Breytingar	Nr.	Dags.	Nafn	DREKAVELLIR 18, HAFNARF.		
				Verkfræðistofa Þráinn & Benedikt	H.Þ.R.	T.H.S.
				Laugetvegi 178, 105 Bvk.	M	1:50/20
				Sími: 553 1770, 568 7775, Fax: 568-7701	Nr.	BK04
				Netfang: verkfræðistofa@verkfræðistofa.is	Dags.	nov. '04
				Burðarvirki veggir og loft		090838-4839
				bílahús		