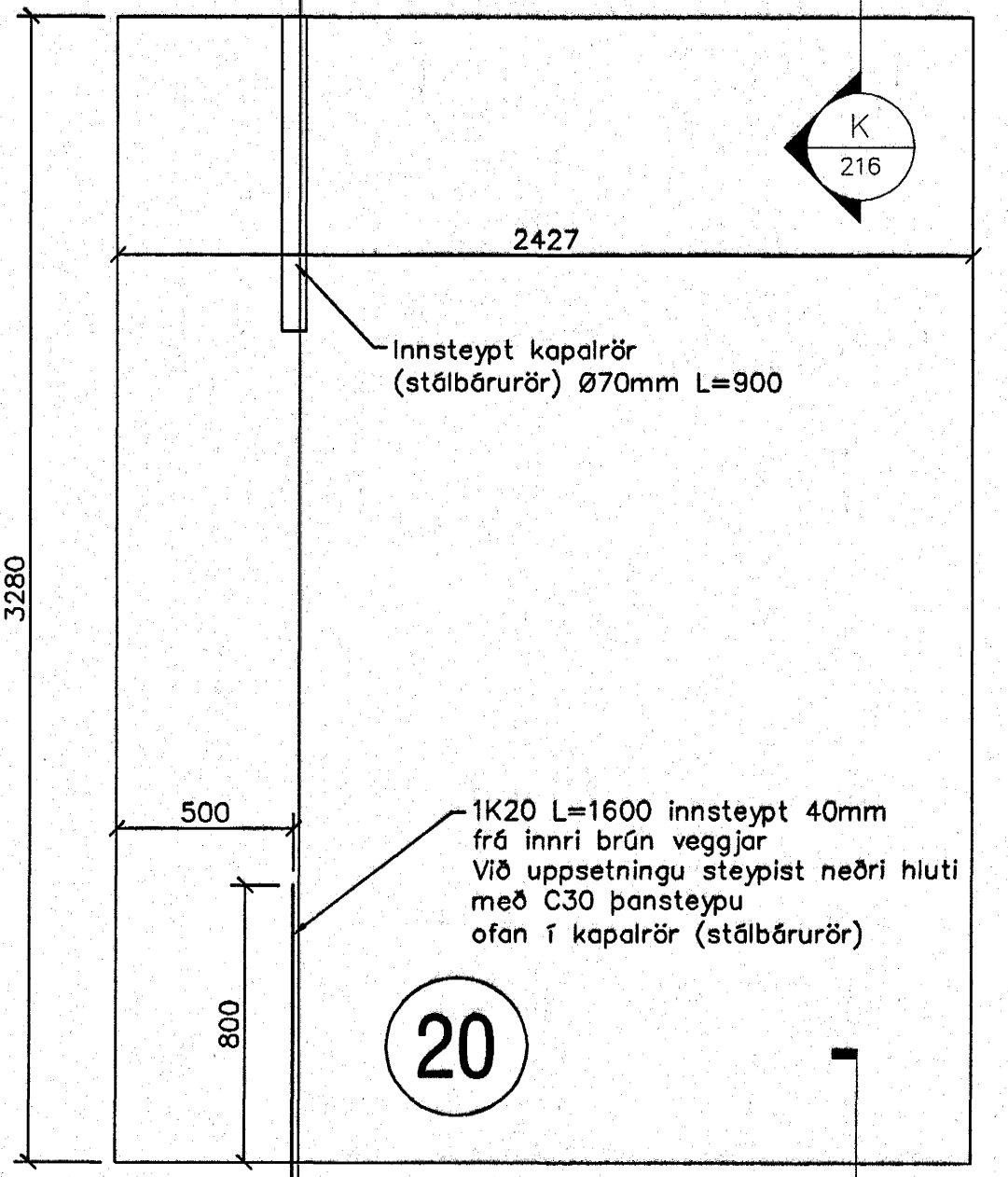
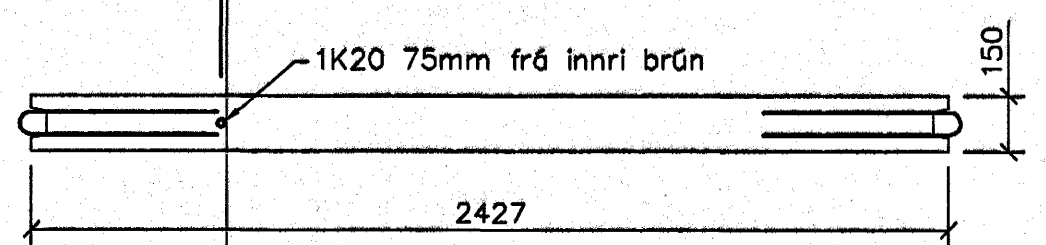


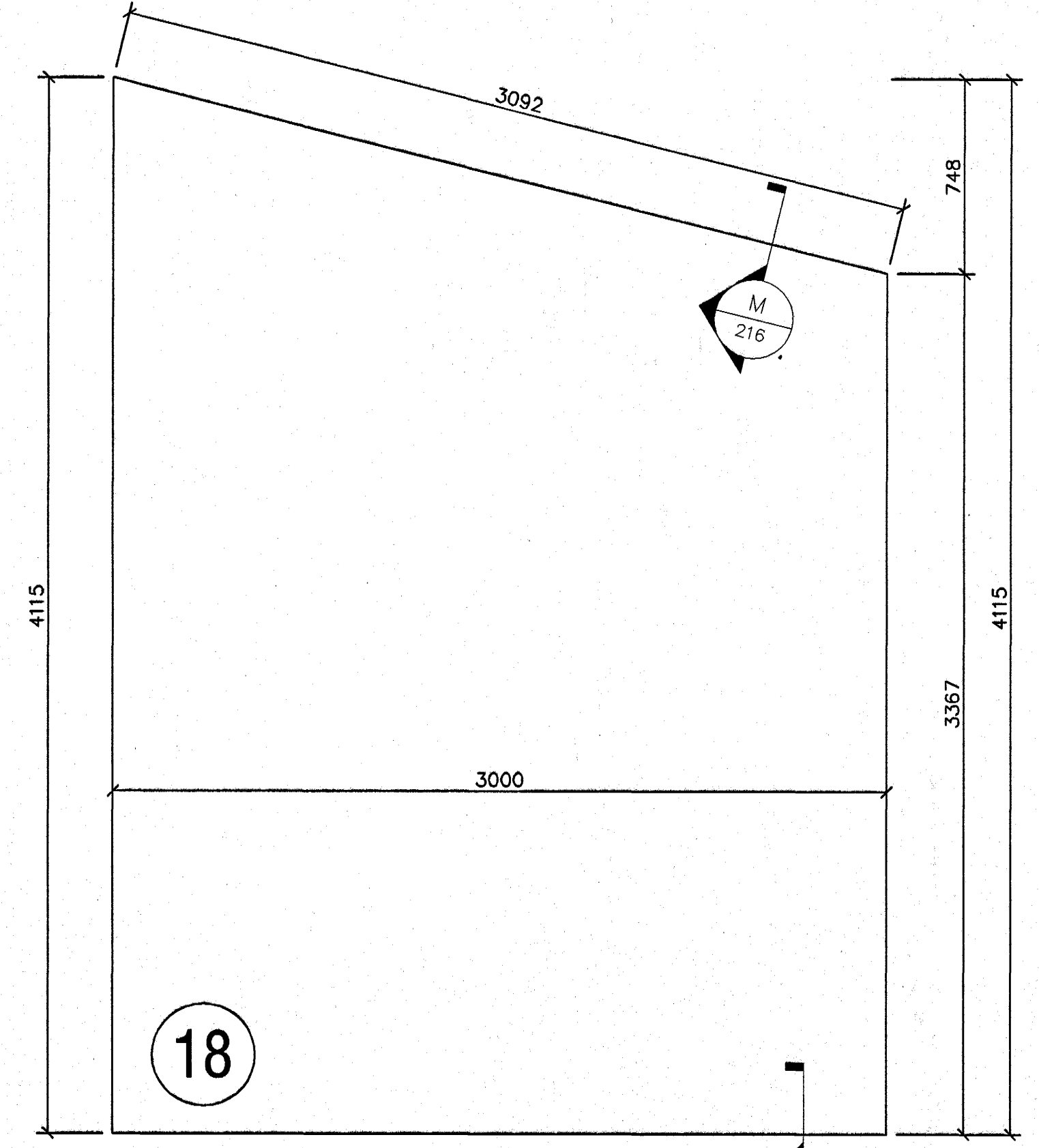
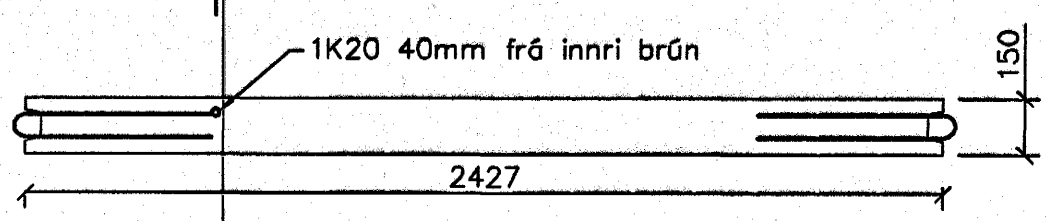
17

1 stk



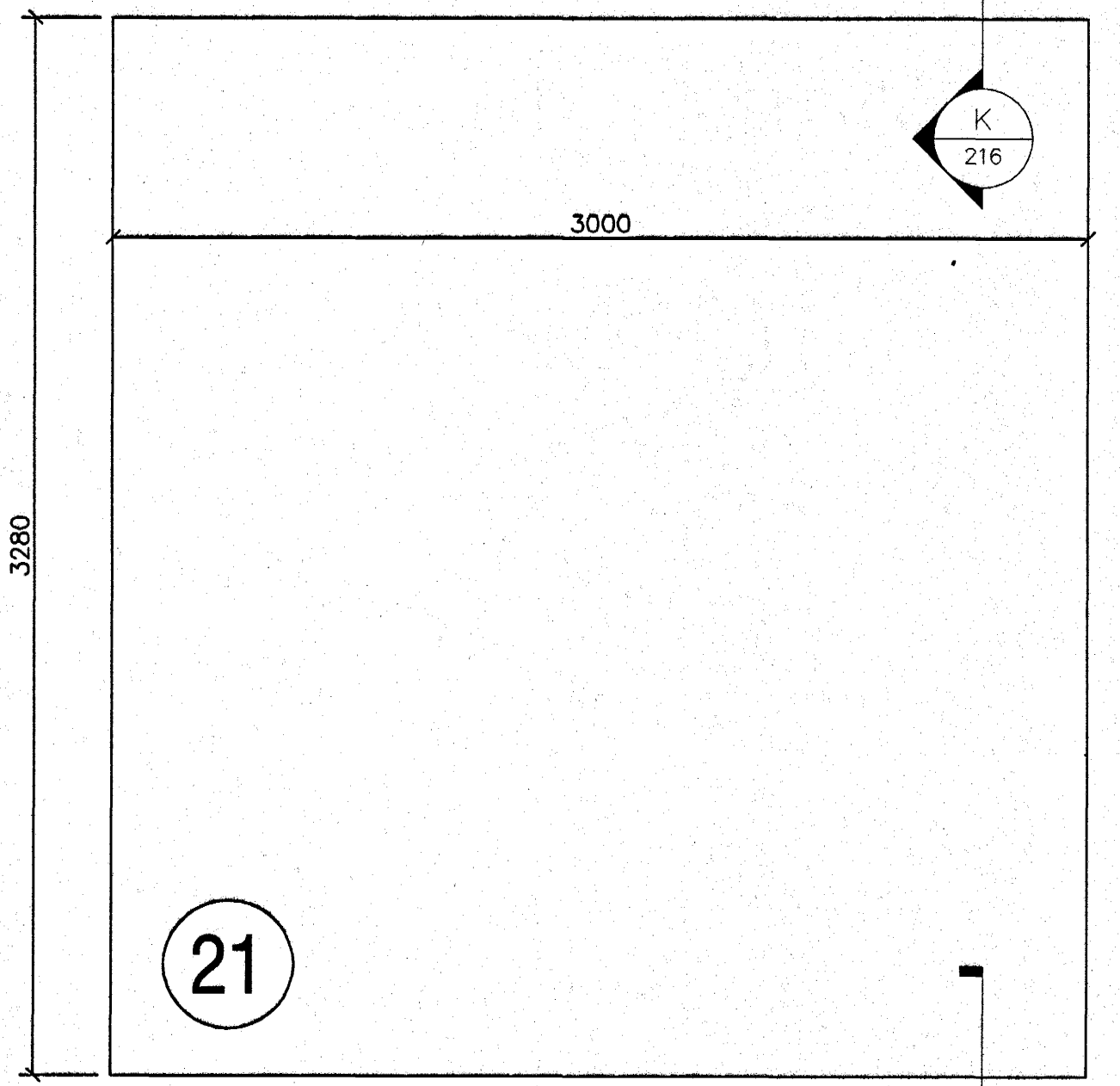
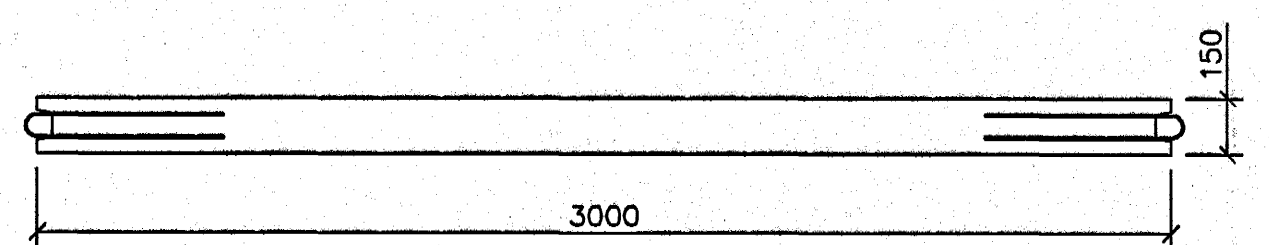
20

1 stk



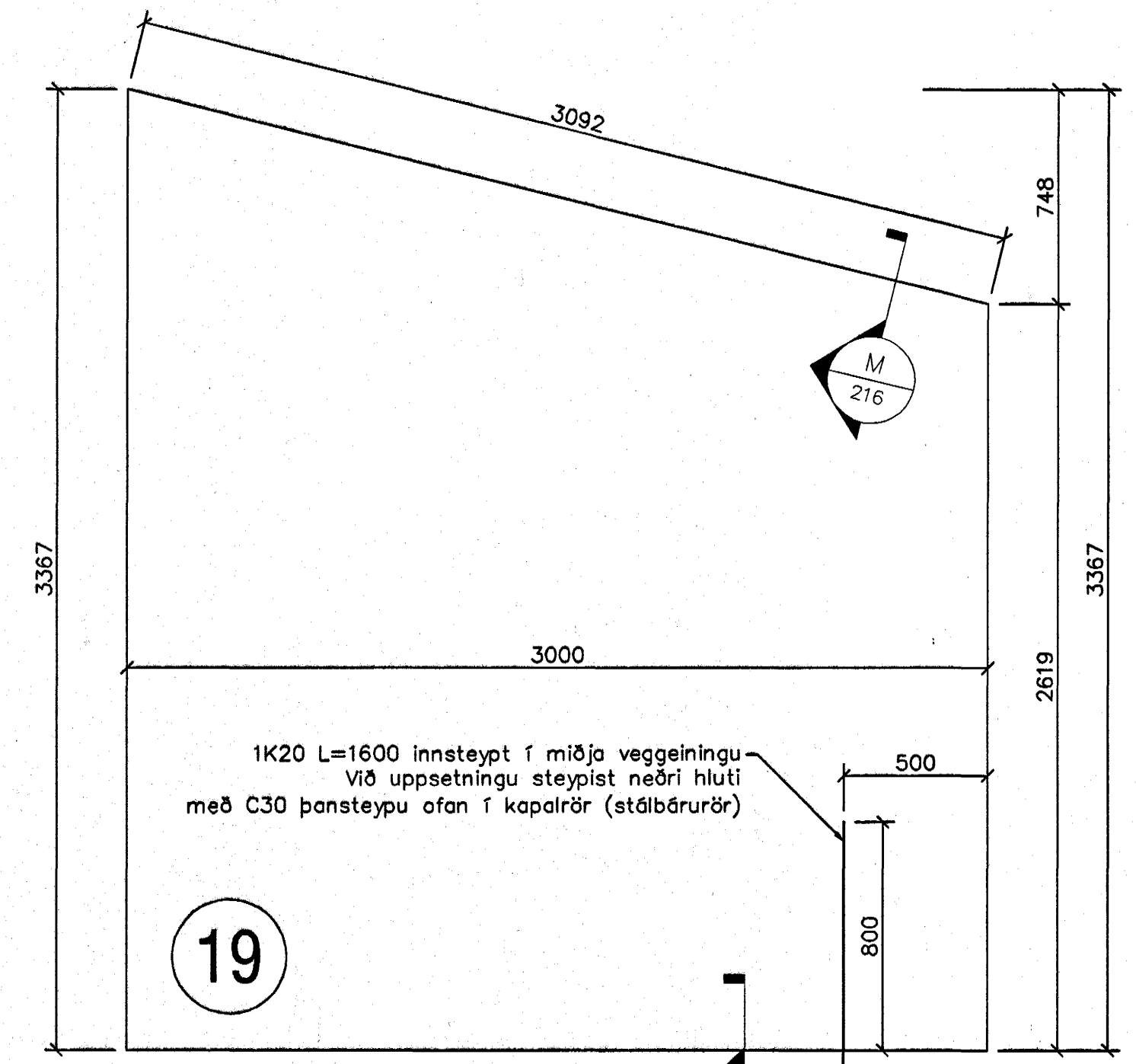
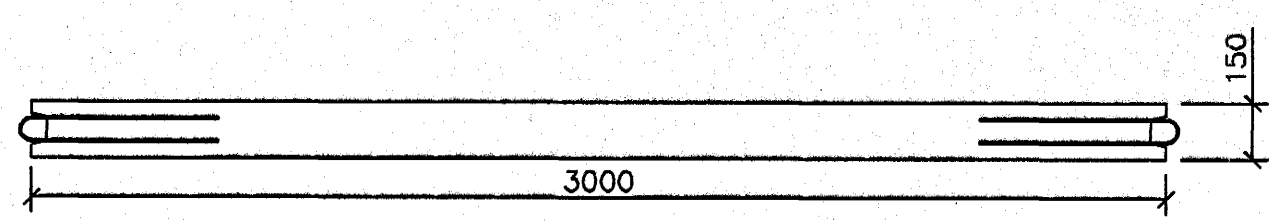
18

1 stk



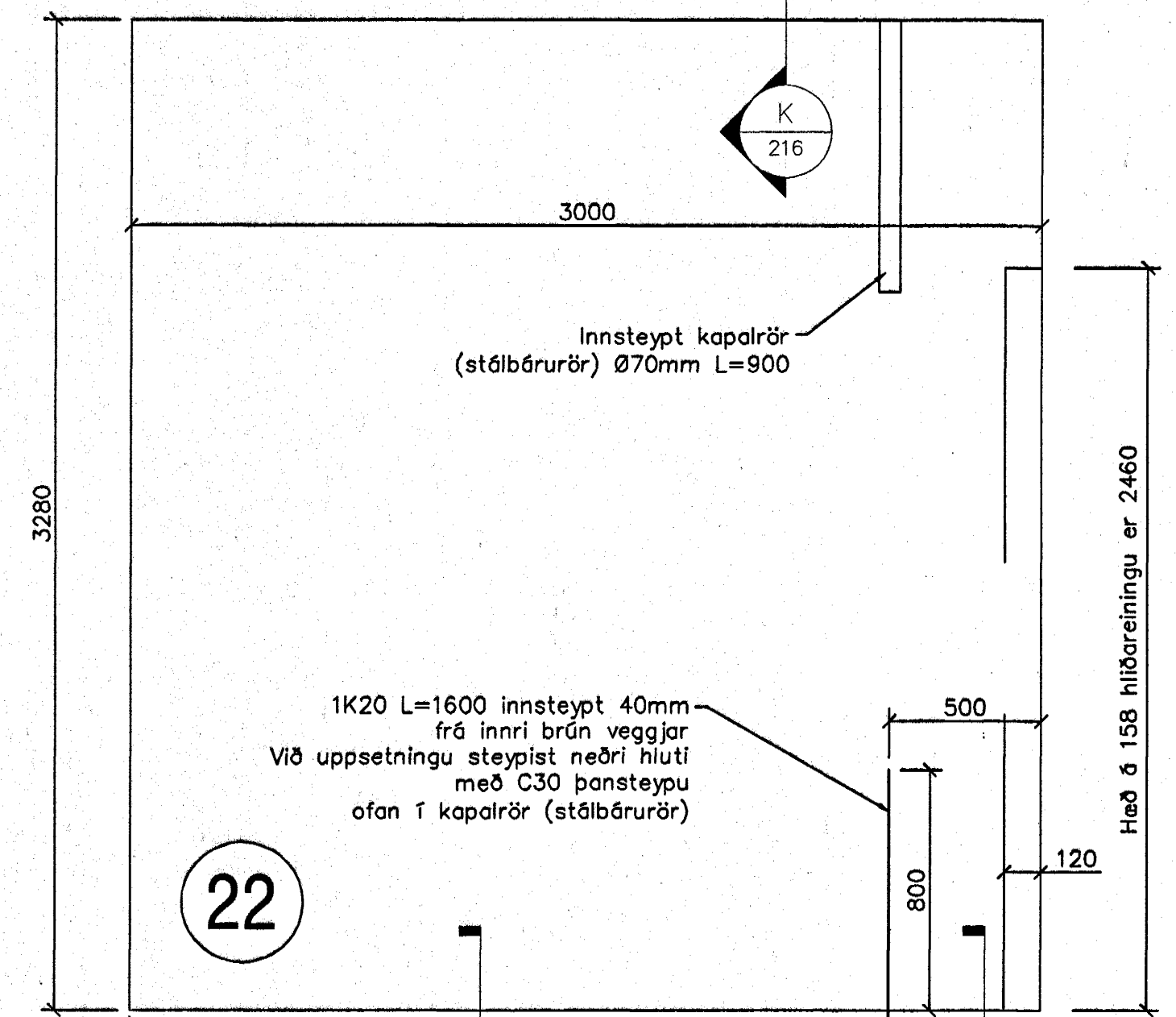
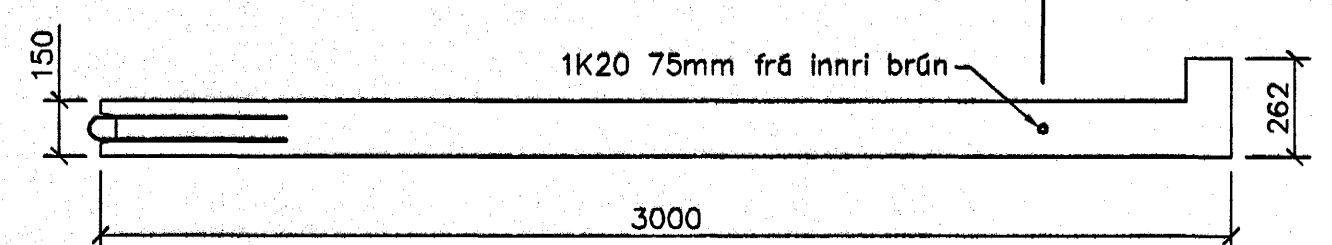
21

1 stk



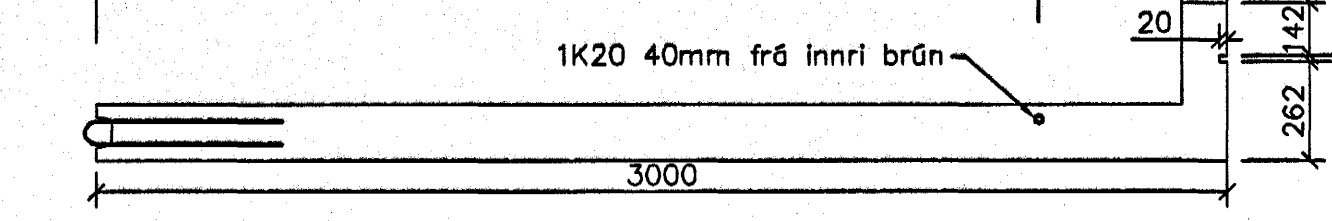
19

1 stk

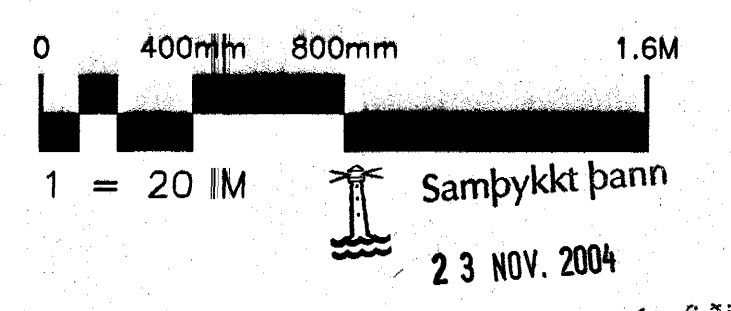


22

1 stk



Skýringar sjá teikningu nr.200
 Lámárgs bending eininga #K10 m150 í miðju og K16 í öllum útbrúnum
 Flutningar, hönnun og smíði hífingarlykkja er á ábyrgð framleiðanda eininga og skulu þannig útfærðar að þær trufli ekki uppsetningu, tengingu og frágang við einingar eftir að þær eru komnar á endanlegan stað.



ARKITEKSTOFAN ehf. Skólavíðisgata 1, 101 Reykjavík Sími 565 5444, Fax 565 5441		Ofl. Nr. Bræðingur Hönnuður Daga
Hvaleyrarskóli 4. áfangi		Verkefning
Strengingur ehf. Verkefni- og smíðastofa Fjarbergata 11-13, 220 Hafnarfirður Sími 565 5444, Fax 565 5441	Veggingingur Smíðateikning	Tekið / Hannaf af JW/HBM
Hönnuður: 17-11-04 Höfðun: Þórunn Markósson kt. 240563-2909 Samþykkingarhönnuður	Daga: sept. 2004 Málsvæði: 1:20	Wimer teikninga 215