
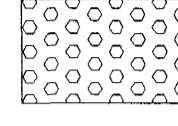
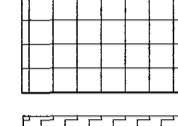
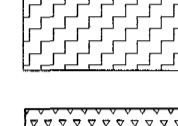
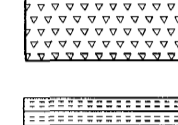
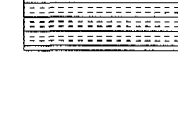
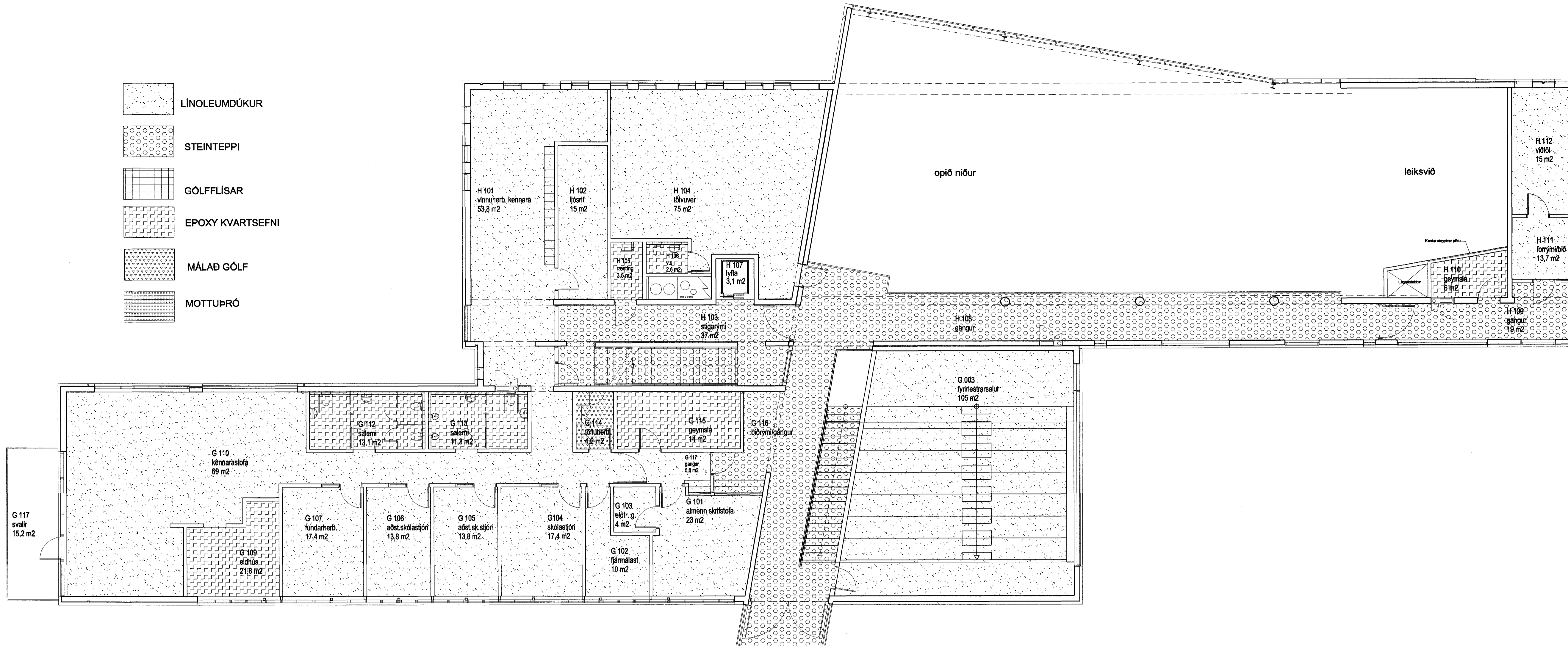
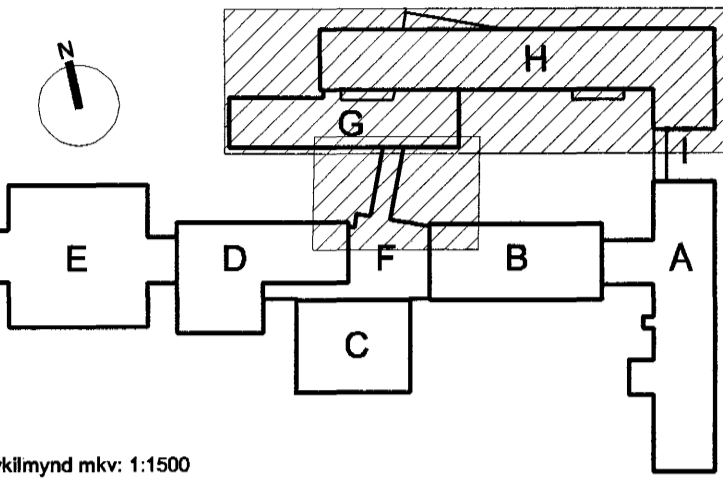


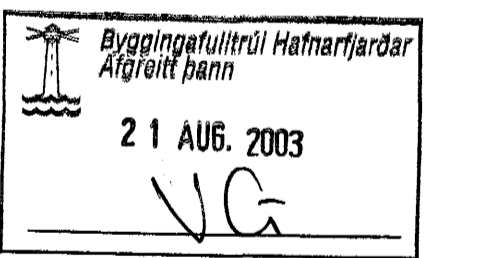
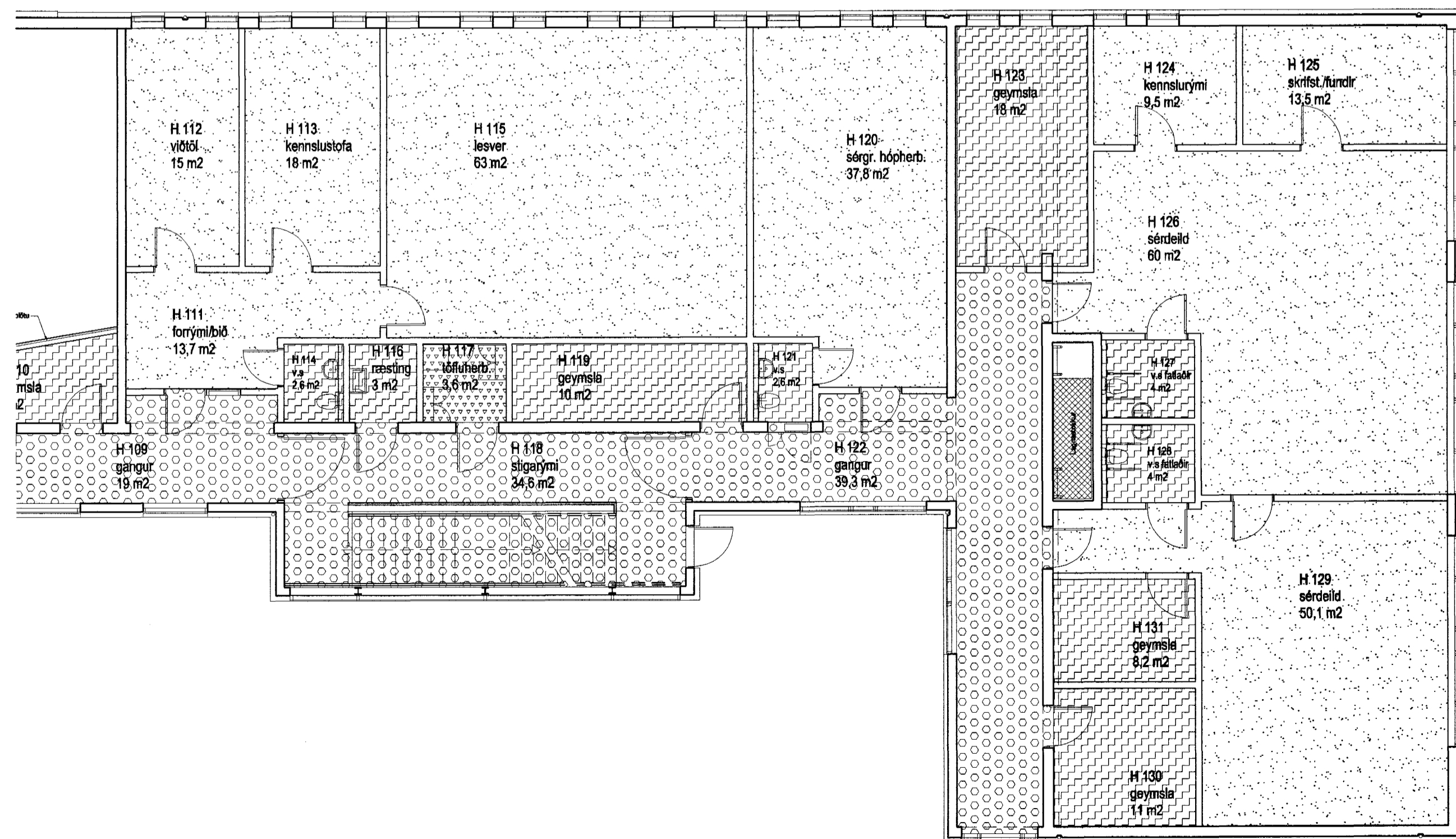
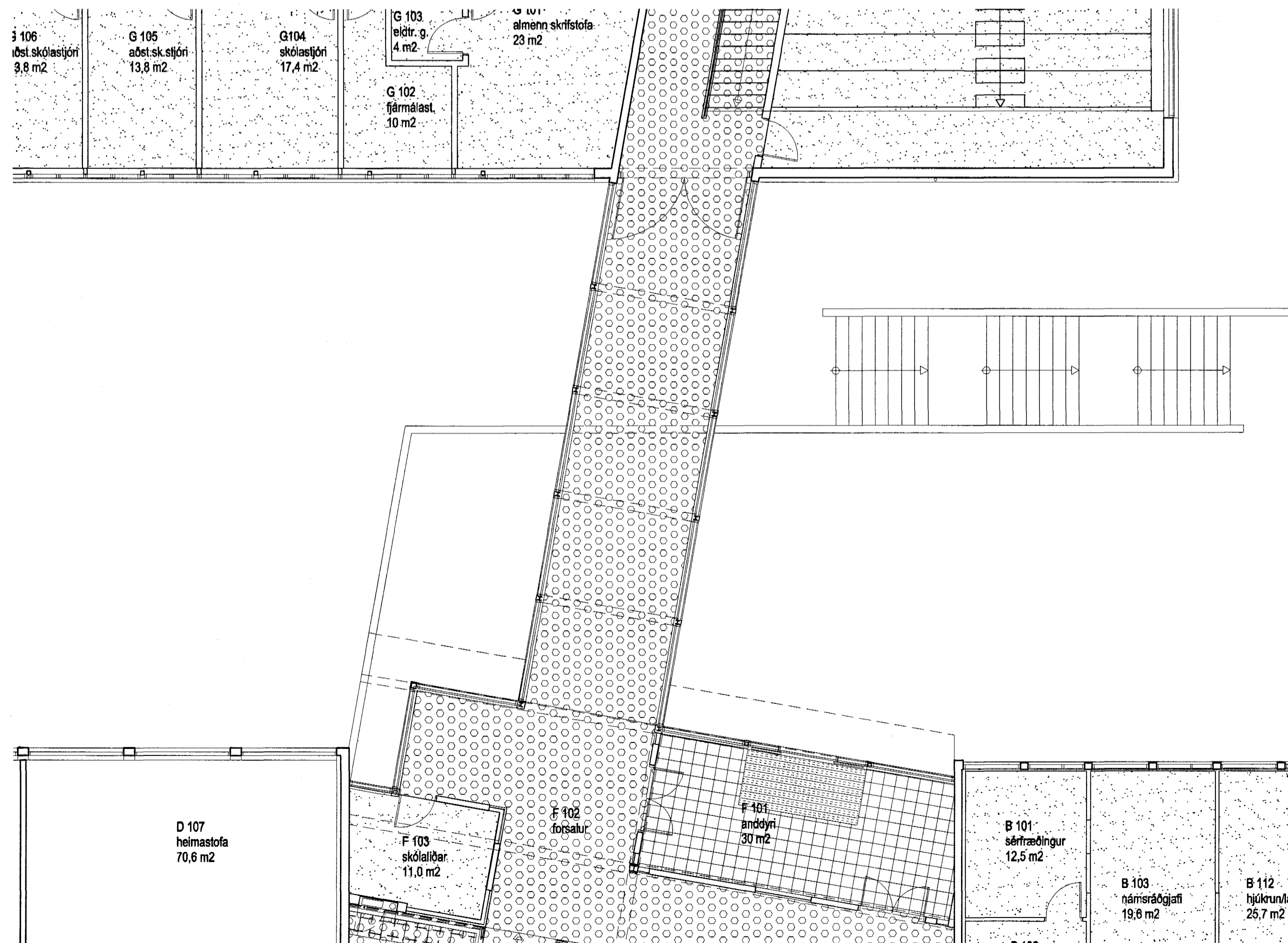
-  LÍNOLEUMDÚKUR
-  STEINTEPPI
-  GÓLFFLÍSAR
-  EPOXY KVARTSEFNI
-  MÁLÁÐ GÓLF
-  MOTTUÞRÓ



Höfundur eldri bygginga: Þorvaldur Kristmundsson



Lýkilmýnd mkr: 1:1500



21 AUG. 2003

VINNUTEIKNING

04 JUN 2003

Fasteignafélag Hafnarfjarðar

VÍÐISTÁÐASKÓLI, VÍÐBYGGING

Hrauntungu 7, stgr. 1400-01 43100070 0240

VERKTEIKNING

GRUNNMÝND, GÓLFFRÁGANGUR

1. HÆÐ, HÚS F, G OG H

MKV.: 1:100

DAGS: 14.03.2003

TEIKNAD: SH

SKRÁ: 0240, (43)3.02-(43)3.03.dwg

(43)3.02

Frumútg.

BATTERIÐ
ARKITEKTARÁÐ

Jón Ólafur Ólafsson FAL

kt: 030658-4592

Sigurður Einarsson FAL

kt: 110457-2709

Sigurður Harðarson FAL

kt: 030446-3999

kt: 521291-1259

Trénuhrauni 1

220 Hafnarfjarði

S: 54 54 700 F: 54 54 701

Netfang: batteri@arkitekt.is

Heimasíða: www.arkitekt.is

© BATTERIÐ EHF

ÖLL RÍGHT OG AFRITUN TERNINGAR AD HJUTA EBA I HELD ER HAD BIRFLOU LEYFI HOFRUDA