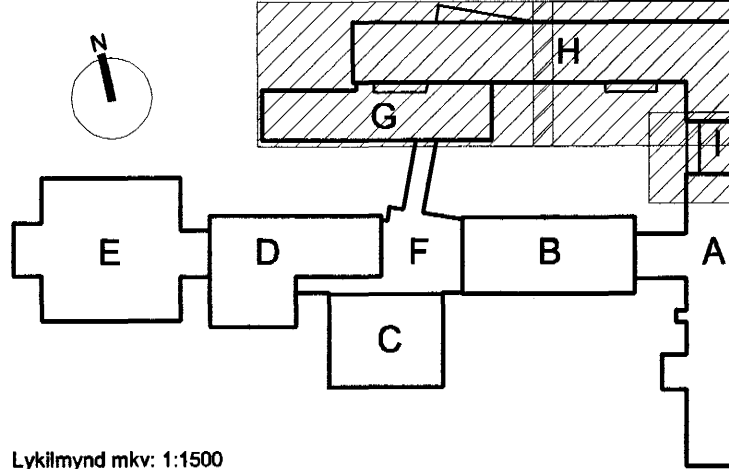
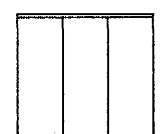
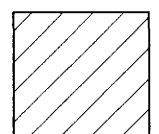
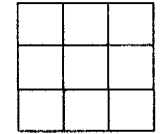
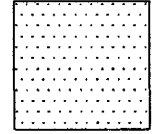
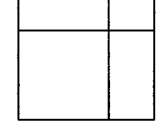
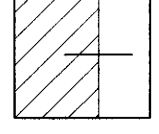
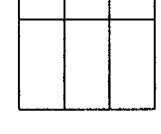
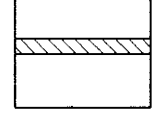
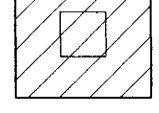
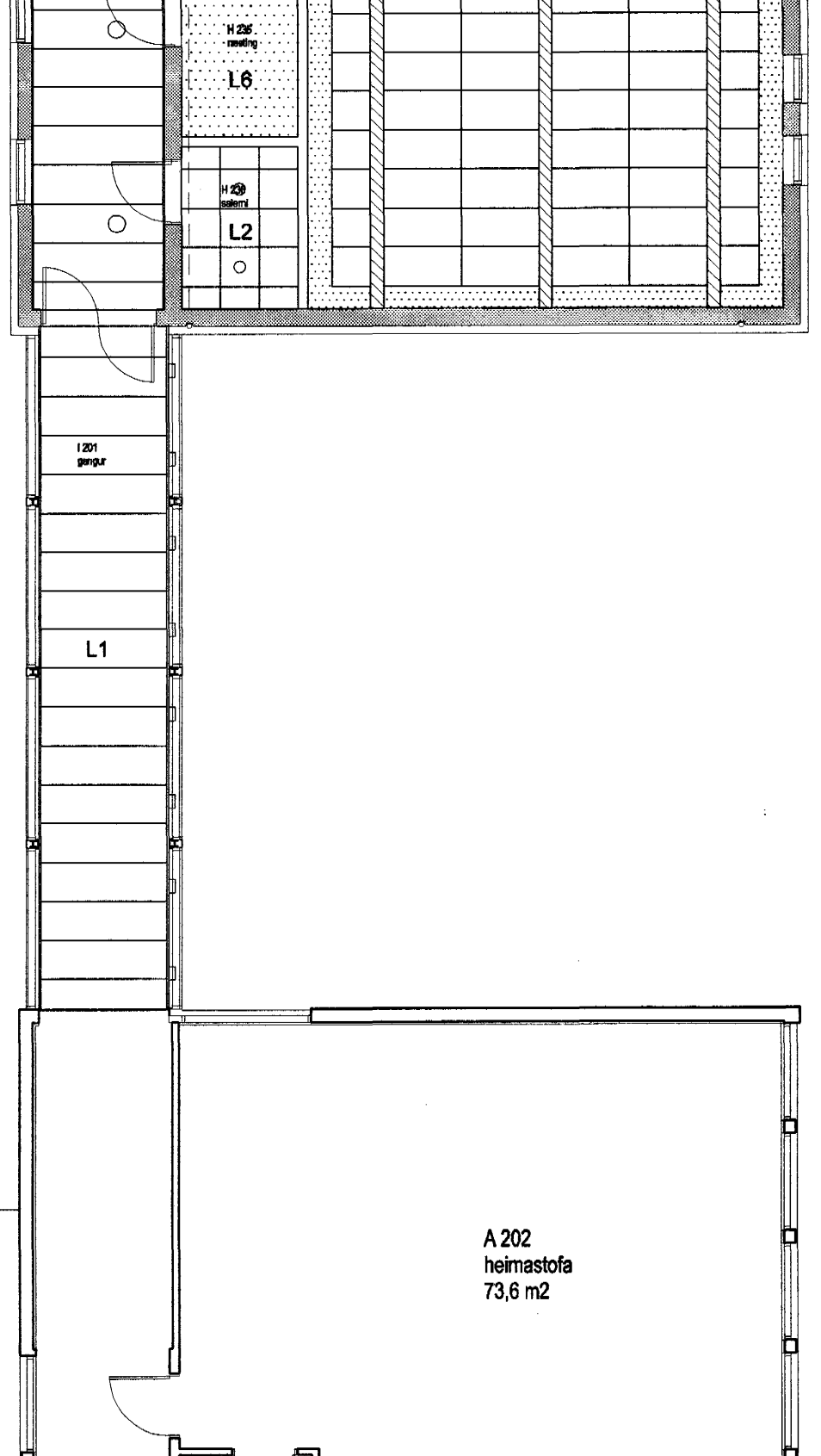
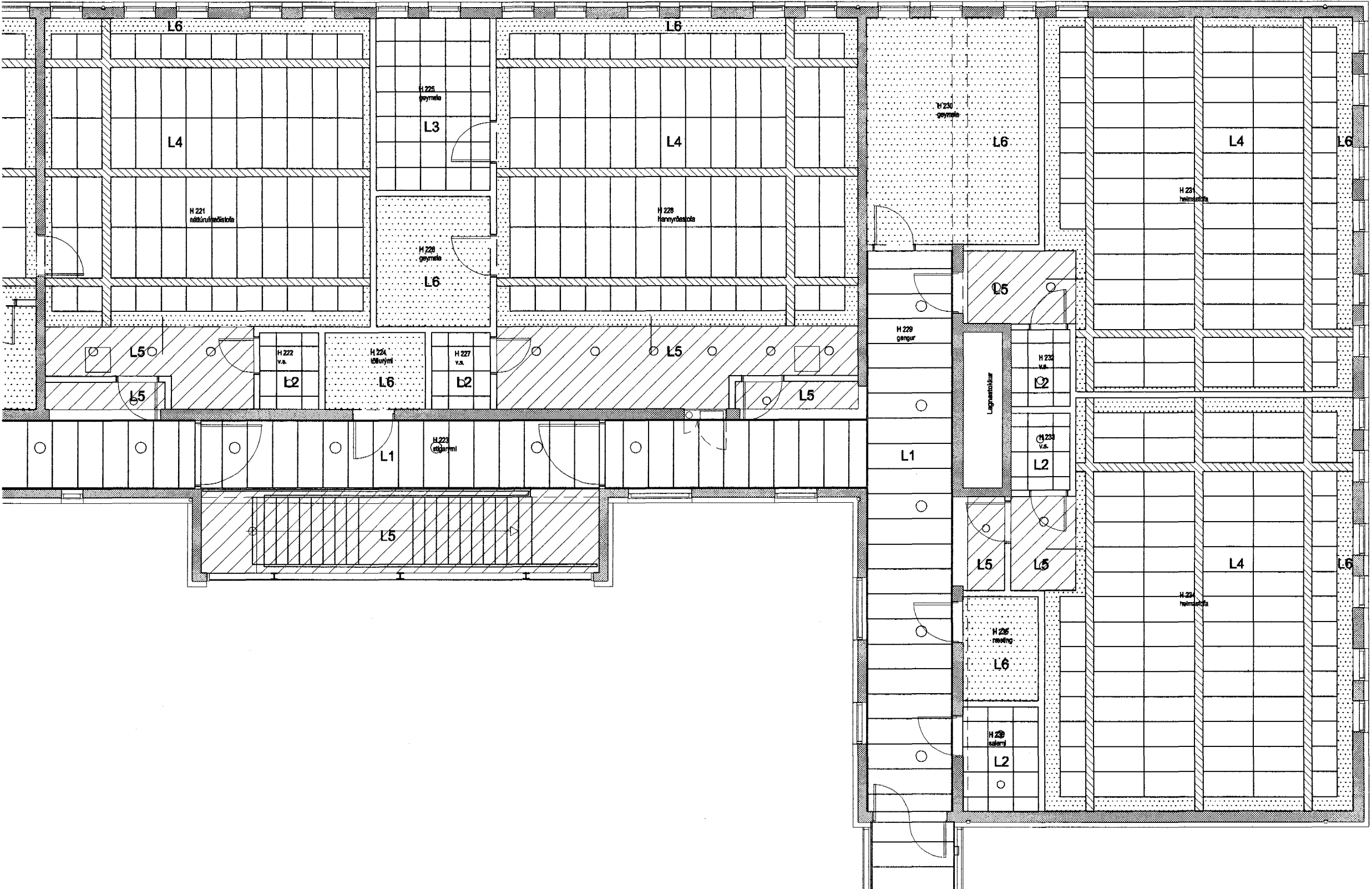


Höfundur eldri bygginga: Þorvaldur Kristmundsson



Lykillmynd mkr: 1:1500

	L1 kerfslöf		L5 slátur gíspólur á bikklektrum
	L2 kerfslöf, 600/600		L6 sandapartíð á stein og máláð
	L3 kerfslöf, 600/600 1200/1200		L7 hlíðarkokun
	L4 kerfslöf, á trégrind 600/600 600/1200		Lamprennur, galvanhúðað h. 40lb. 200 mm. Niðr hengdar.
			Laga í gíspólri 600/600 staðsetn. í samræði v/ lagnahönnuði



A 202
heimasíða
73,6 m²

VINNUTEIKNING

0 4 JUN 2003

Fasteignafélag Hafnarfjarðar
VÍÐISTAÐASKÓLI, VIÐBYGGING
Hrauntungu 7, stgr. 1400-01 43100070 **0240**

VERKTEIKNING
GRUNNMYND, LOFTAFIRLIT
2. HÆÐ, BYGGING H OG I
MKV.: 1:100
DAGS: 14.03.2003
TEIKNAD: AE
SKRA: 0240, (39)3.04.dwg

(45)3.04
Frumútg.

Byggingufulltrúi Hafnarfjarðar
Algreitt þann
21 AUG. 2003
VG

BATTERÍÐ
ARKITEKTUR
Jón Ólafur Ólafsson FAI
kt: 090609-4099
Sigurður Einarsson FAI
kt: 110457-2789
S: 54 54 700 F: 54 54 701
Netfang: batteri@arkitekt.is
Helmasíða: www.arkitekt.is