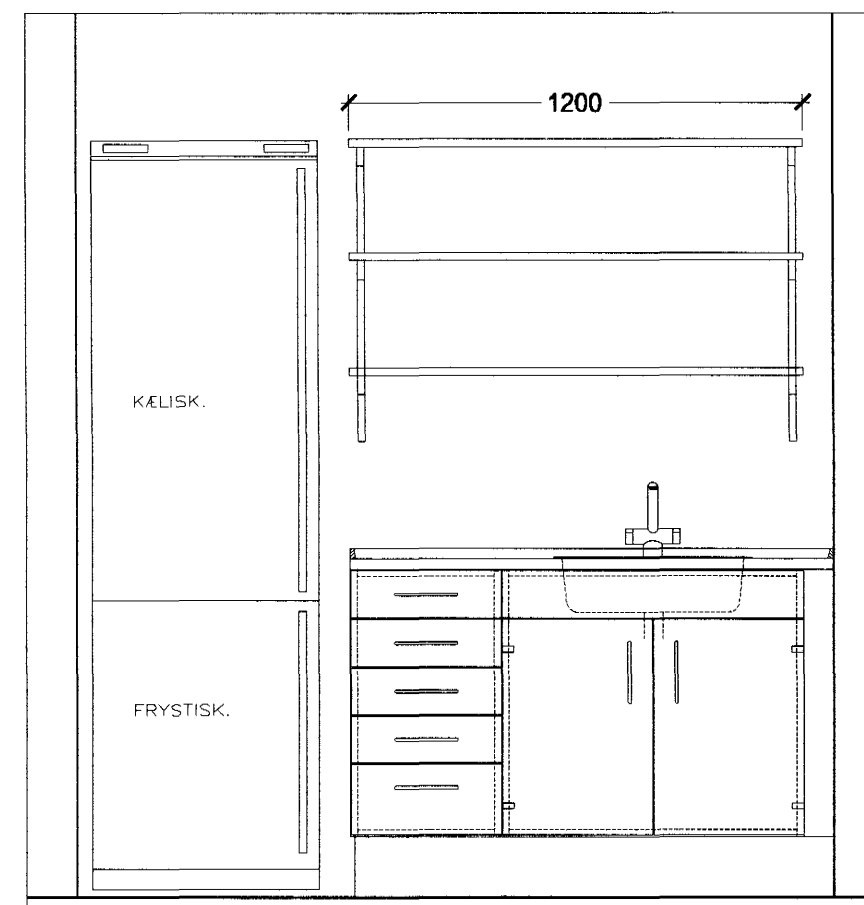
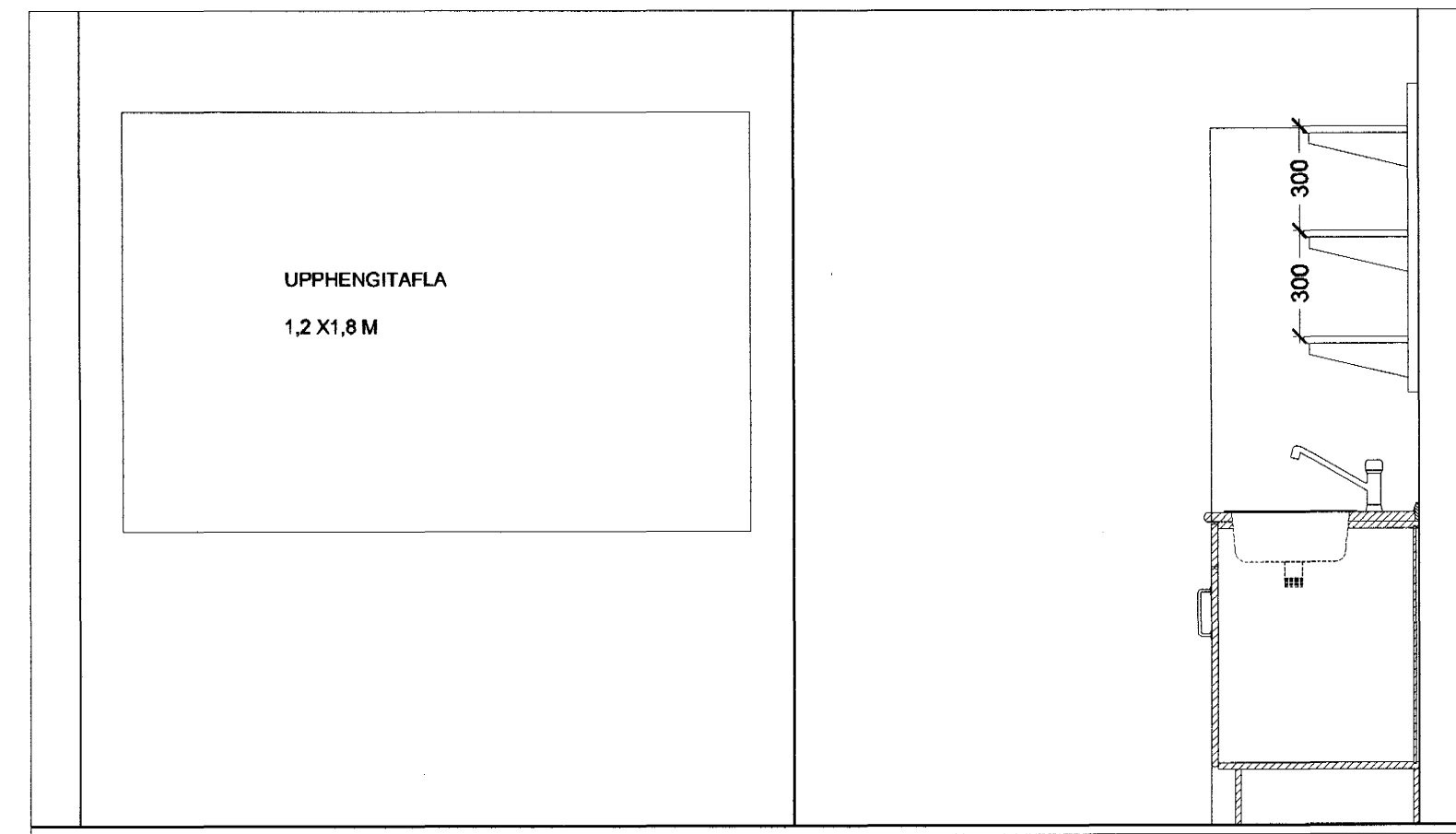


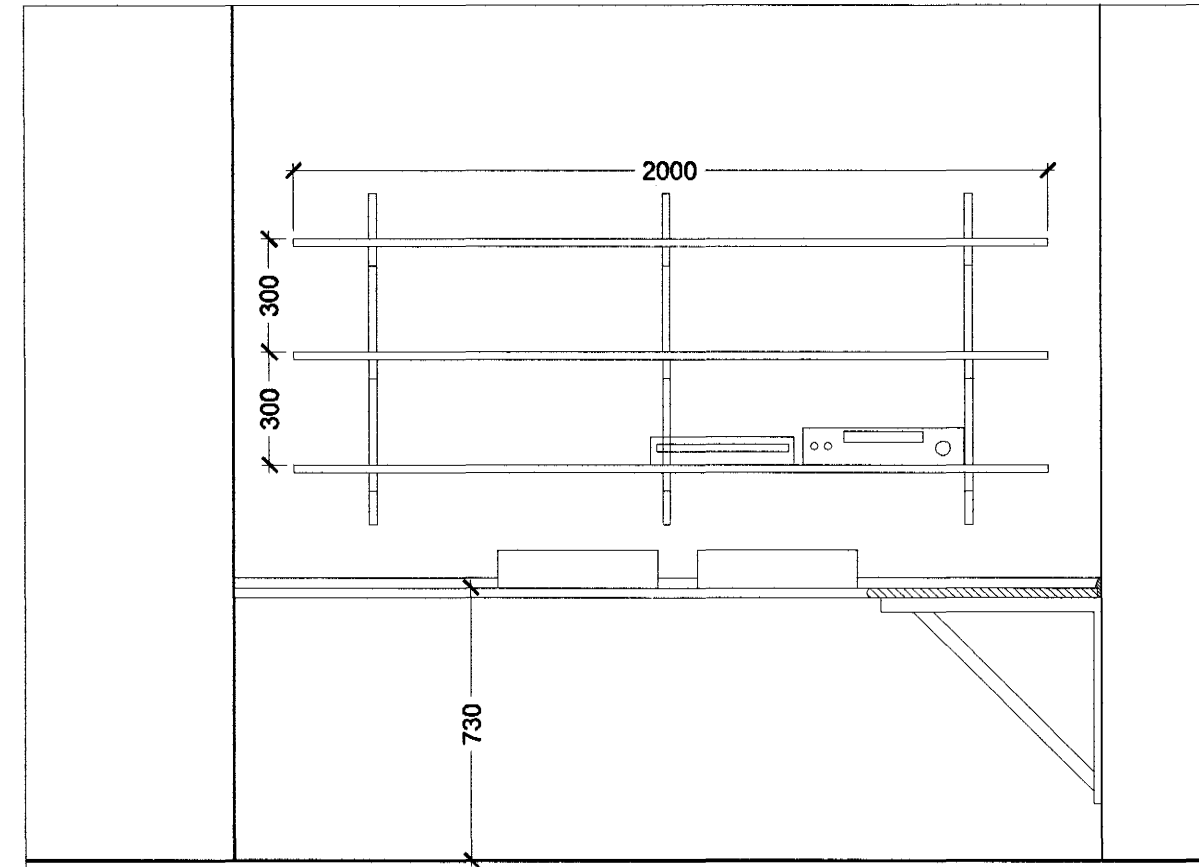
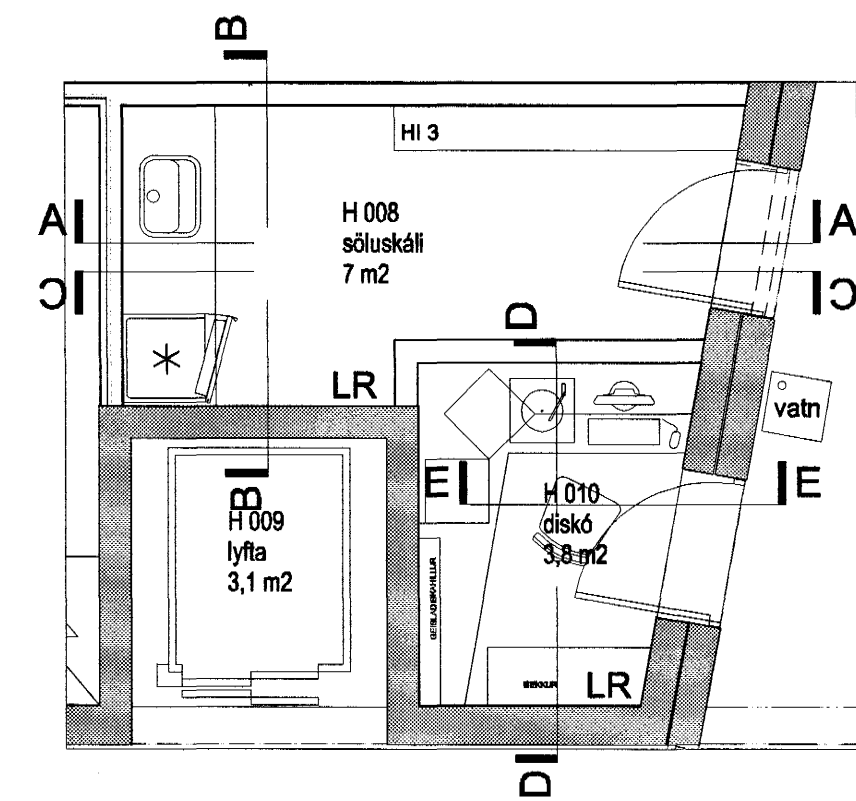
ÁSÝND A - A



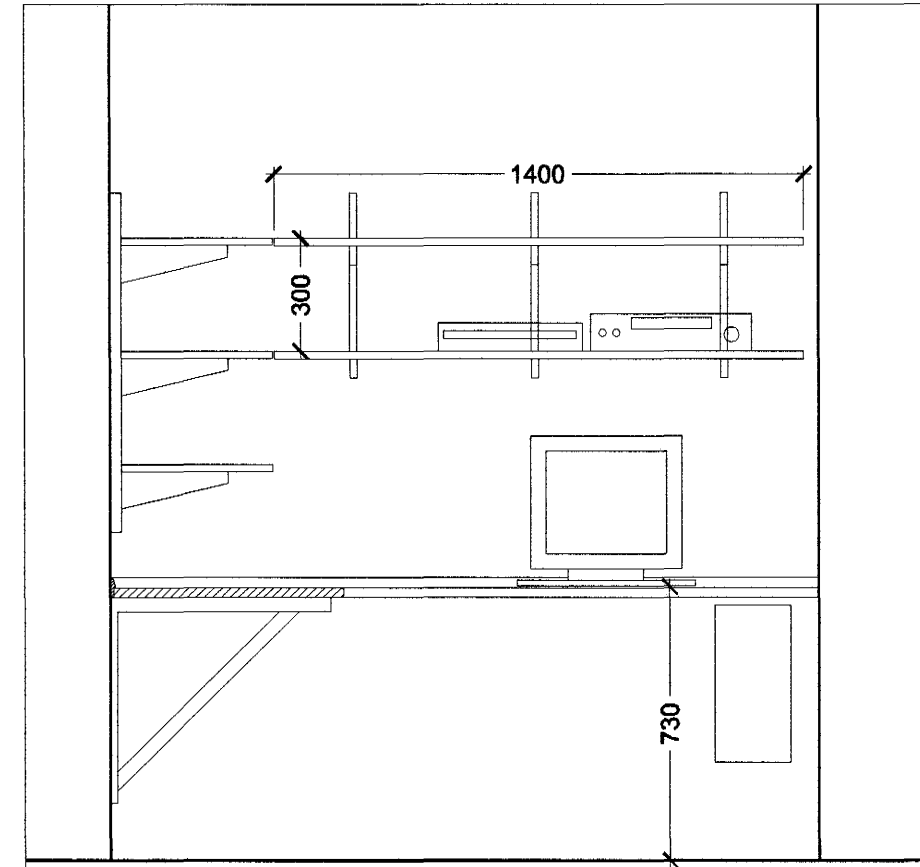
ÁSÝND B - B



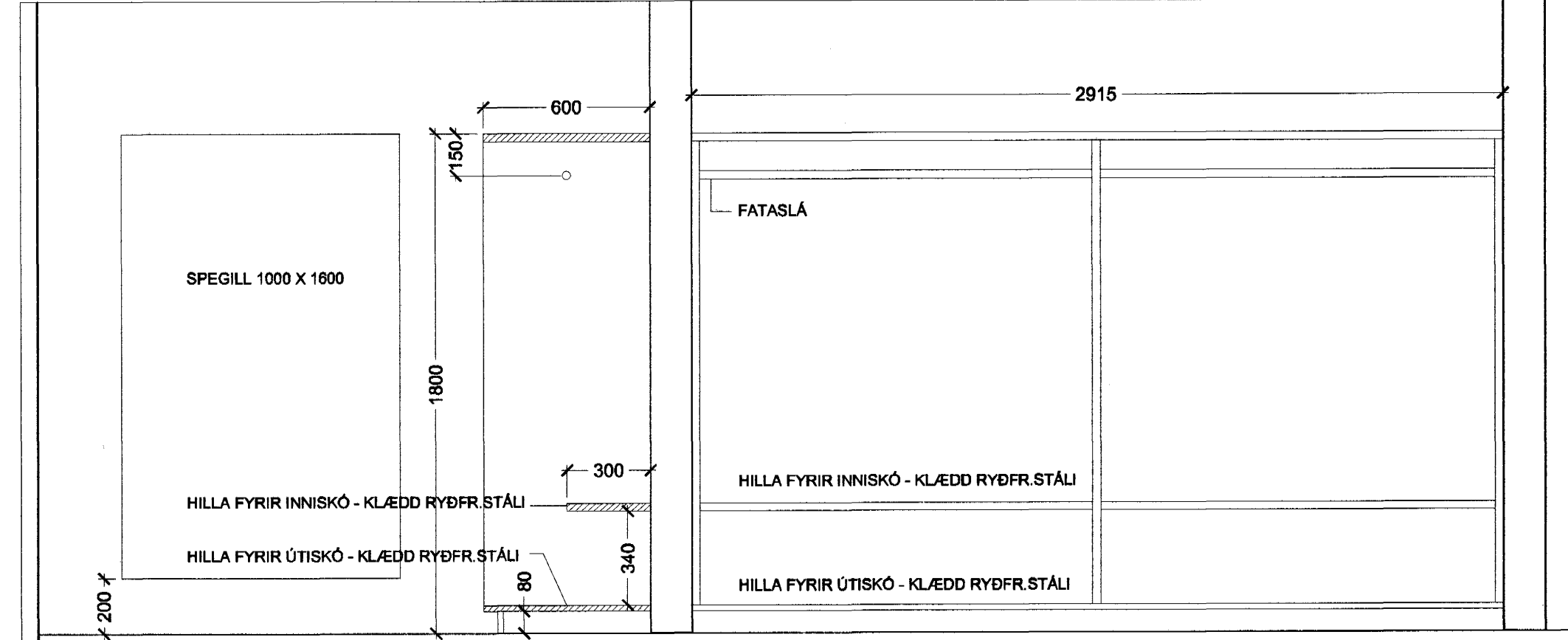
ÁSÝND C - C



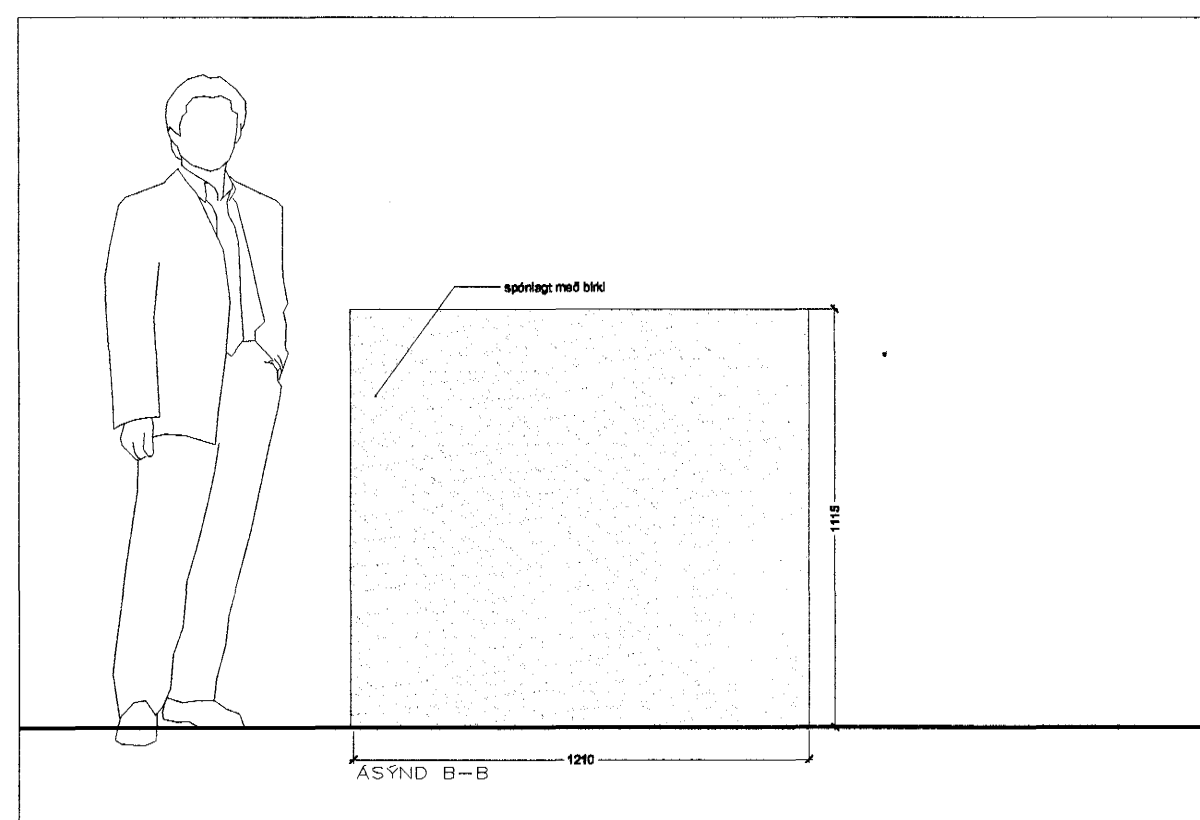
ÁSÝND D - D



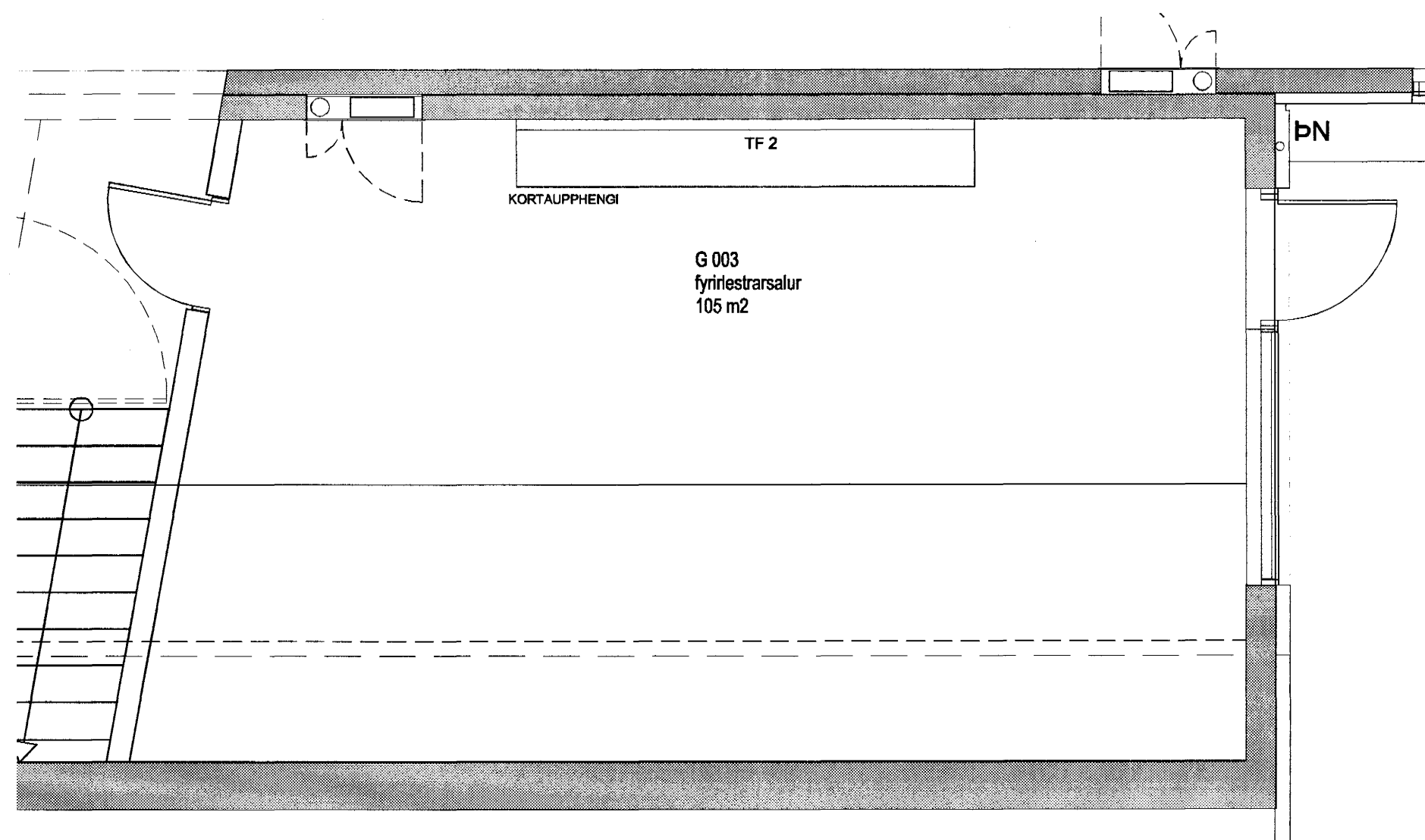
ÁSÝND E - E



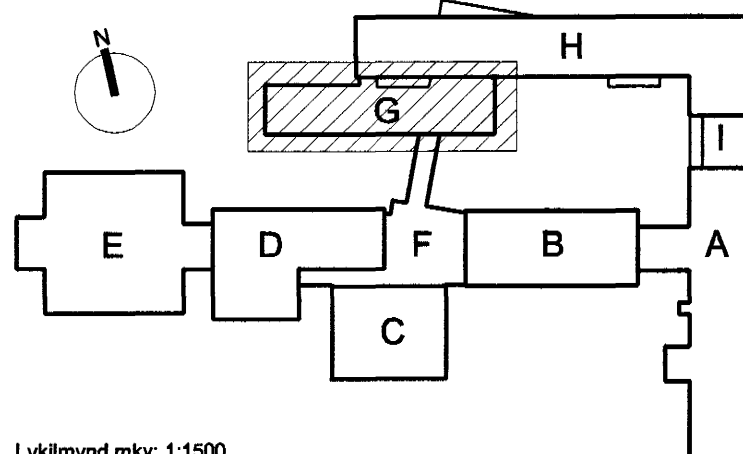
FATASLA - FH 1



ÁSÝND B-B



Höfundur eldri bygginga: Þorvaldur Kristmundsson



Lyklmýnd mkv: 1:1500

VINNUTEIKNING

0 4 JUN 2003

Fasteignafélag Hafnarfjarðar

VÍÐISTAÐASKÓLI, VIÐBYGGING

Hrauntungu 7, stgr. 1400-01 43100070

0240

HLUTATEIKNING

INNRETTINGAR

FYRIRLESTRARSALUR, RÝMI G 003, H108,H010

MKV.: 1:50, 1:20

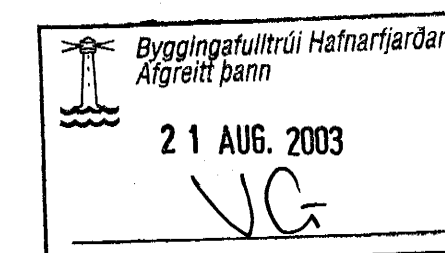
DAGS: 14.03.2003

TEIKNAD: ES,

SKRÁ: 0240, (72)4.09-(72)4.10.dwg

(72)4.05

Frumútg.



Jón Ólafur Ólafsson FAI

Kt: 050685-209

Sigurður Elínsson FAI

Kt: 110457-2789

BATTERIÐ

ARKITEKTAR

Sigurður Elínsson FAI

Kt: 110457-2789

Kt: 521291-1259

Trénuhrauni 1

220 Hafnarfrétt

Sigurður Elínsson FAI

Kt: 030446-3999

S: 54 54 700 F: 54 54 701

Netfang: batteri@arkitekt.is

Heimasíða: www.arkitekt.is

© BATTERIÐ EHF

ÖLL RÝMOT OG AFRITUN TEIKNINGAR AÐ HLUTA EÐNA Í HEILD ER HÁÐ BROTLEGGU LEYTI HÖFUNDNA