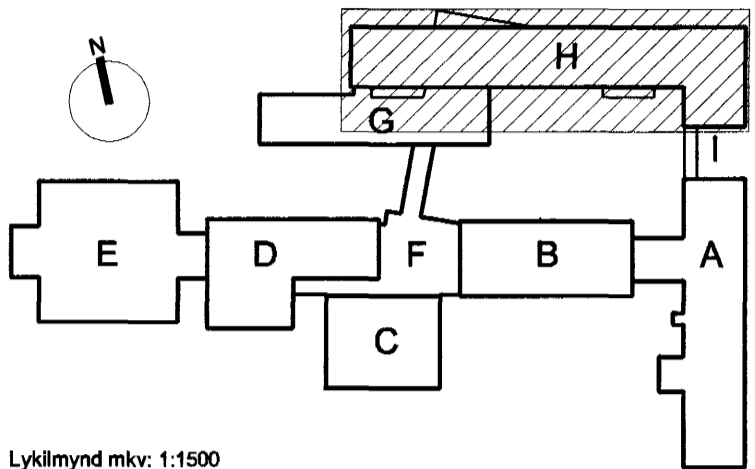
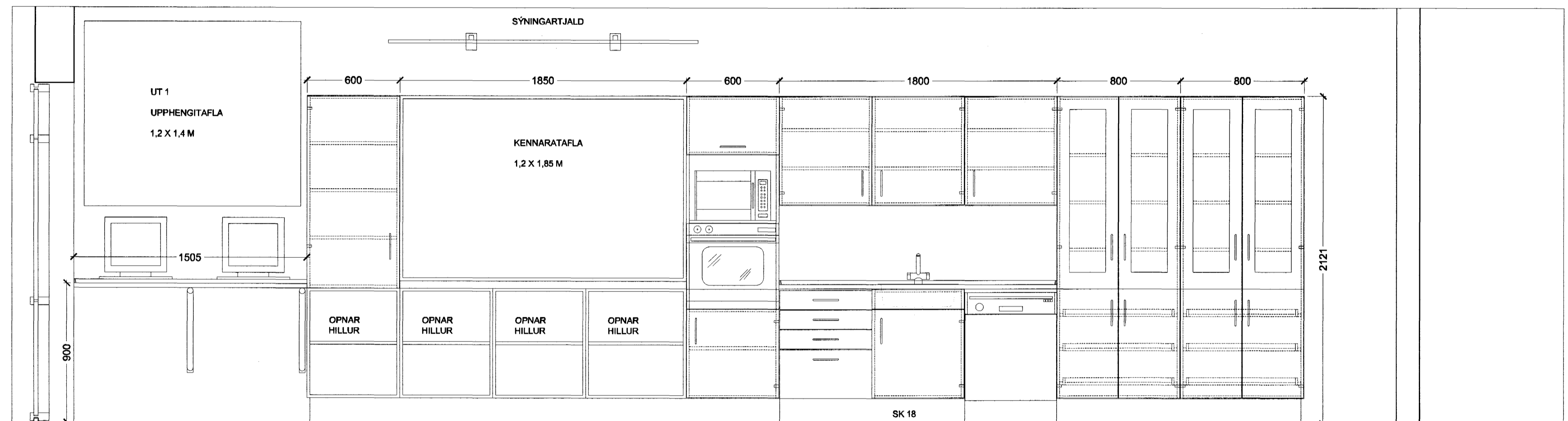
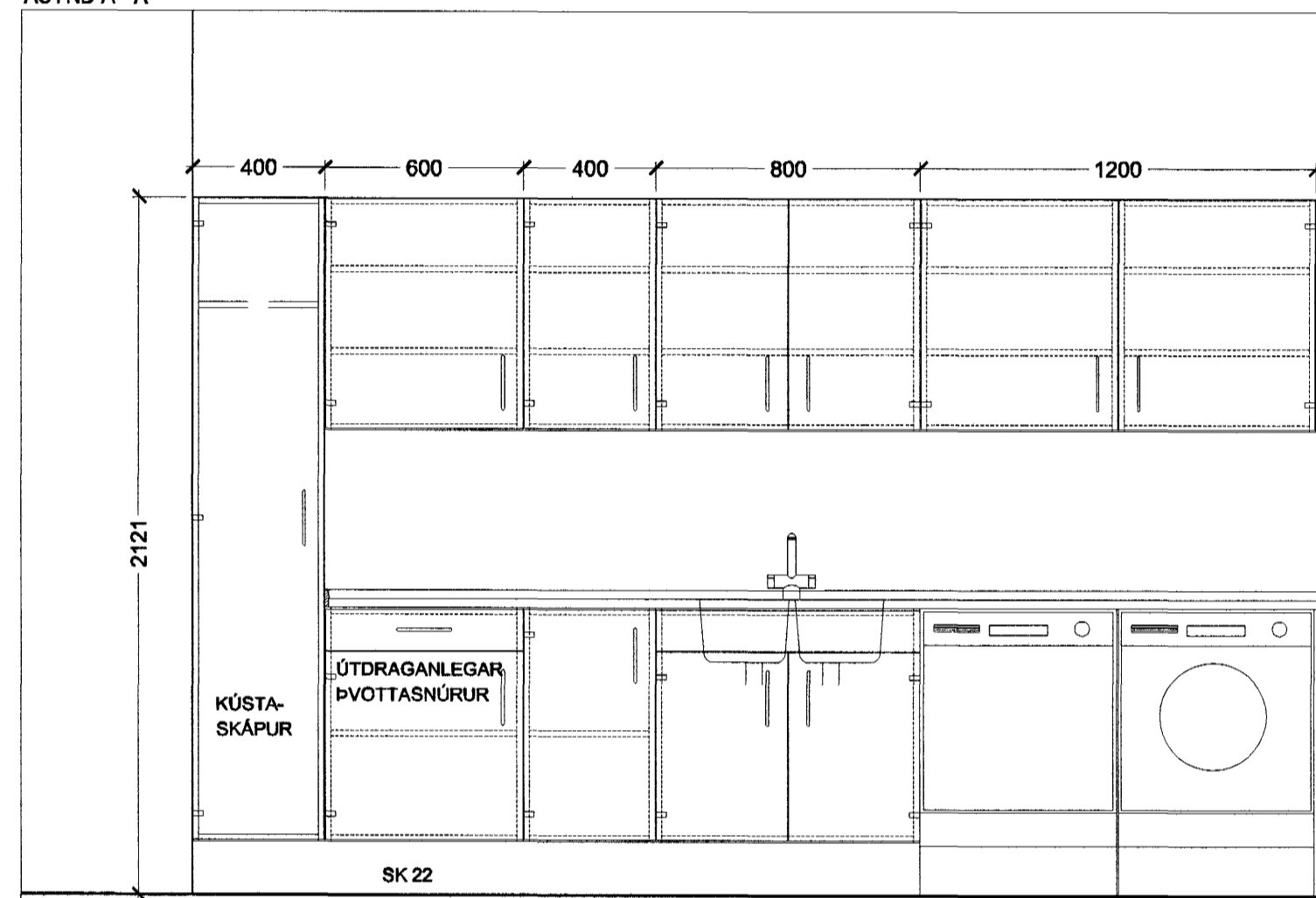


Höfundur eldri bygginga: Þorvaldur Kristmundsson



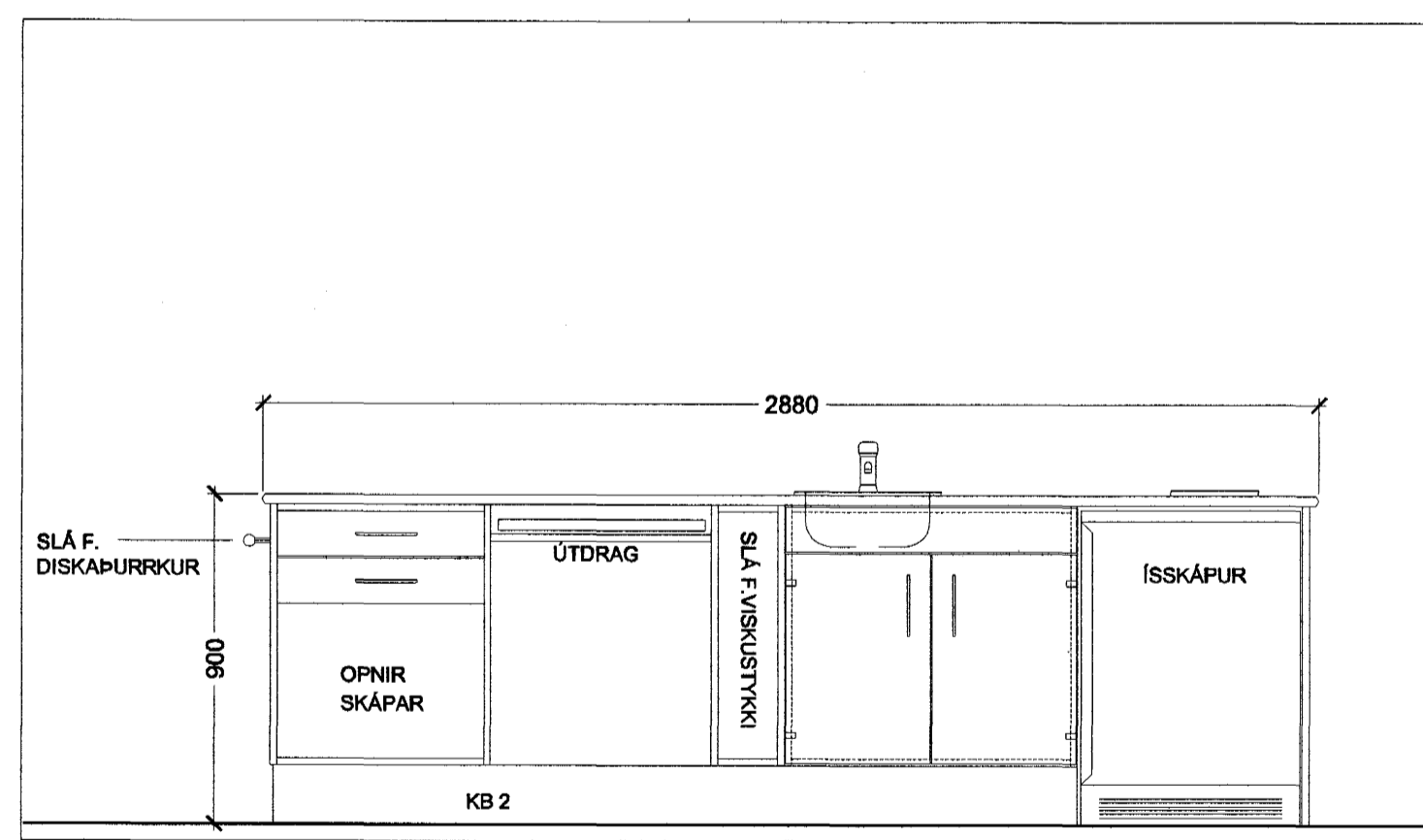
Lýklímynd mkv: 1:1500

ÁSYND A - A

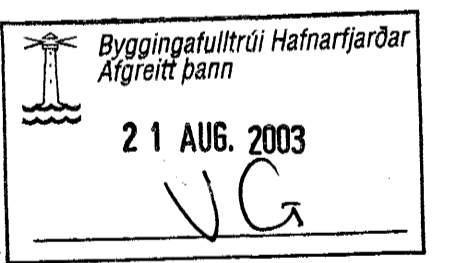
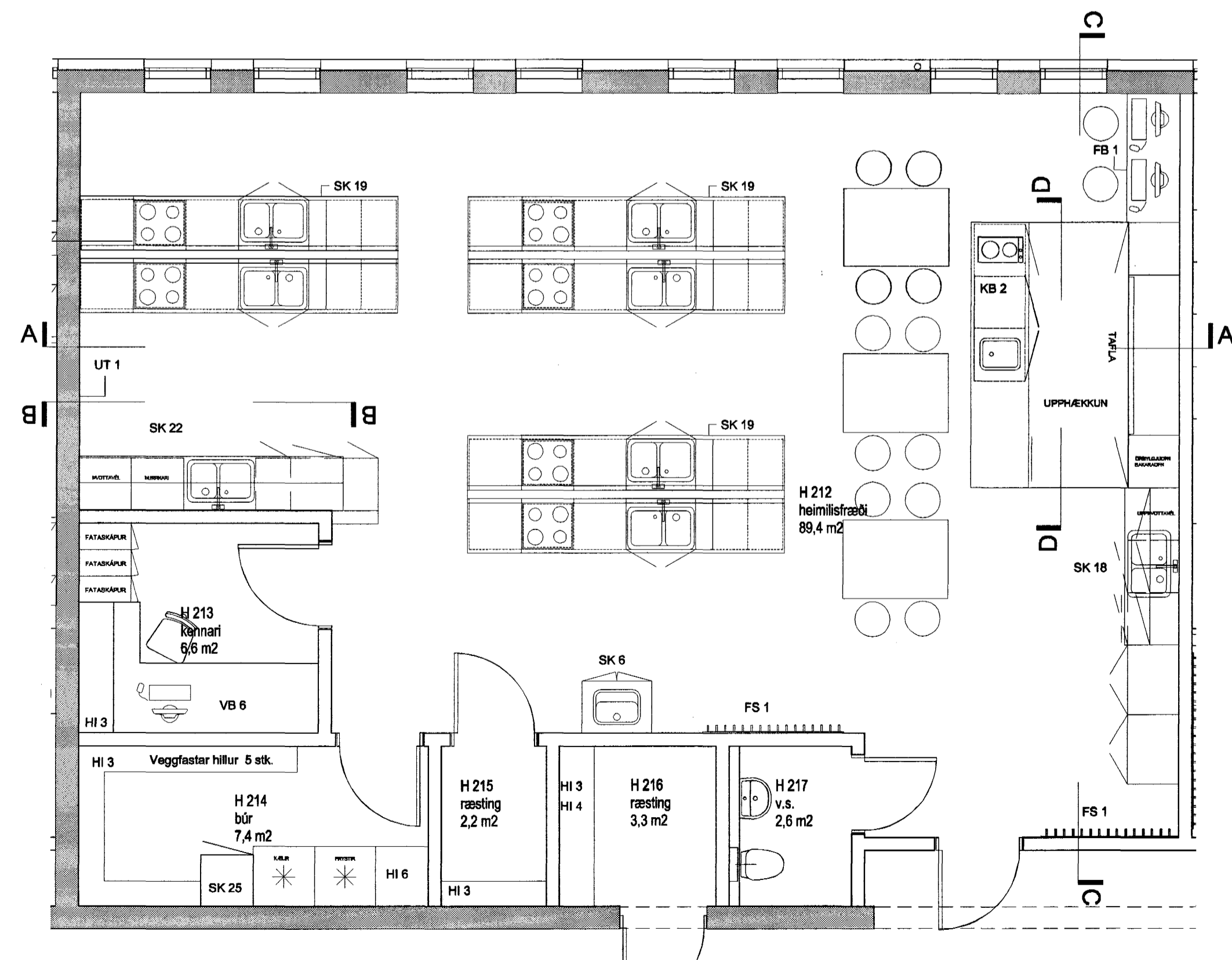


ÁSYND B - B

ÁSYND C - C



ÁSYND D - D



VINNUTEIKNING

0 4 JUN 2003

Fasteignafélag Hafnarfjarðar

VÍÐISTADASKÓLI, VÍÐBYGGING

Hrauntungu 7, stgr. 1400-01 43100070 0240

HLUTATEIKNING

INNRÉTTINGAR
HEIMILISFRÆÐI, RÝMI H 212

MKV: 1:50, 1:20

DAGS: 14.03.2003

TEIKNAD: ES,

SKRÁ: 0240, (72)4.18-(72)4.25.dwg

(72)4.16

Frumútg.

Jón Ólafur Ólafsson FAI

Kt: 090653-7999

Sigurður Einarsson FAI

Kt: 110457-2789

BATTERÍÐ

ARKITEKTAR

S: 54 54 700 F: 54 54 701

Netfang: batteri@arkitekt.is

Heimasíða: www.arkitekt.is

Trénuhúsi 1

220 Hafnarfjörð

© BATTERÍÐ EHF
ÖLL AFRÖD OG AFRITTUN TEIKNINGAR OG HEIÐA EÐA Í HEILD ER HÁÐ BIRGILEGU LEYFI HÖFUNDA