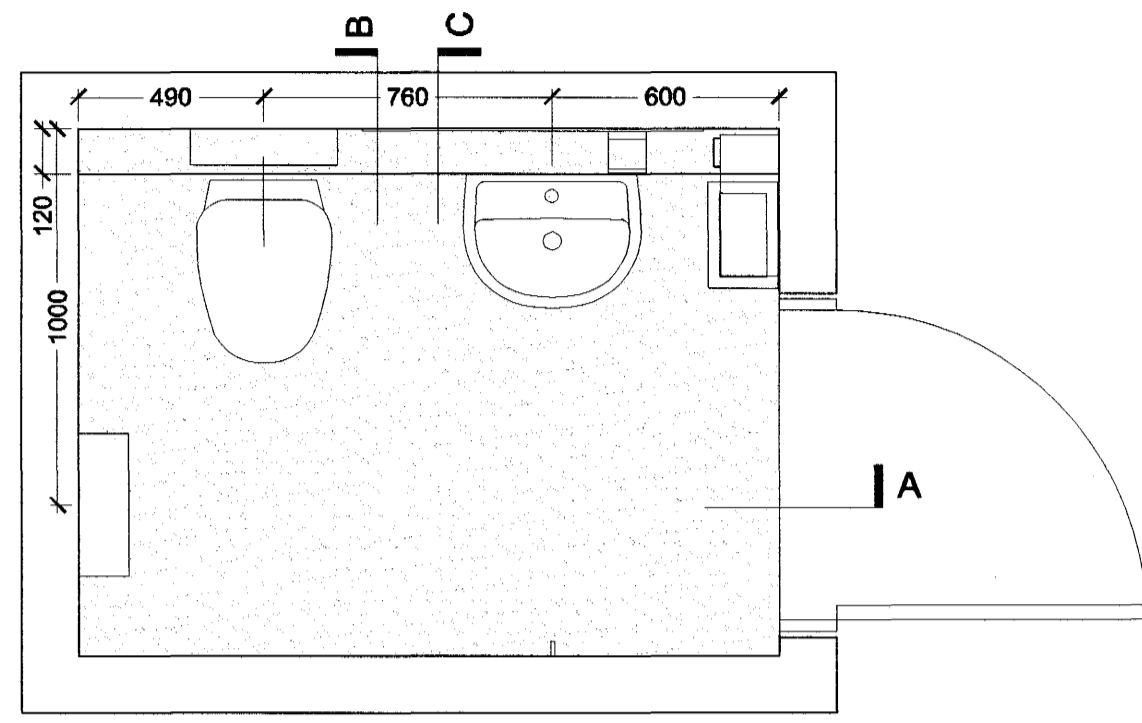
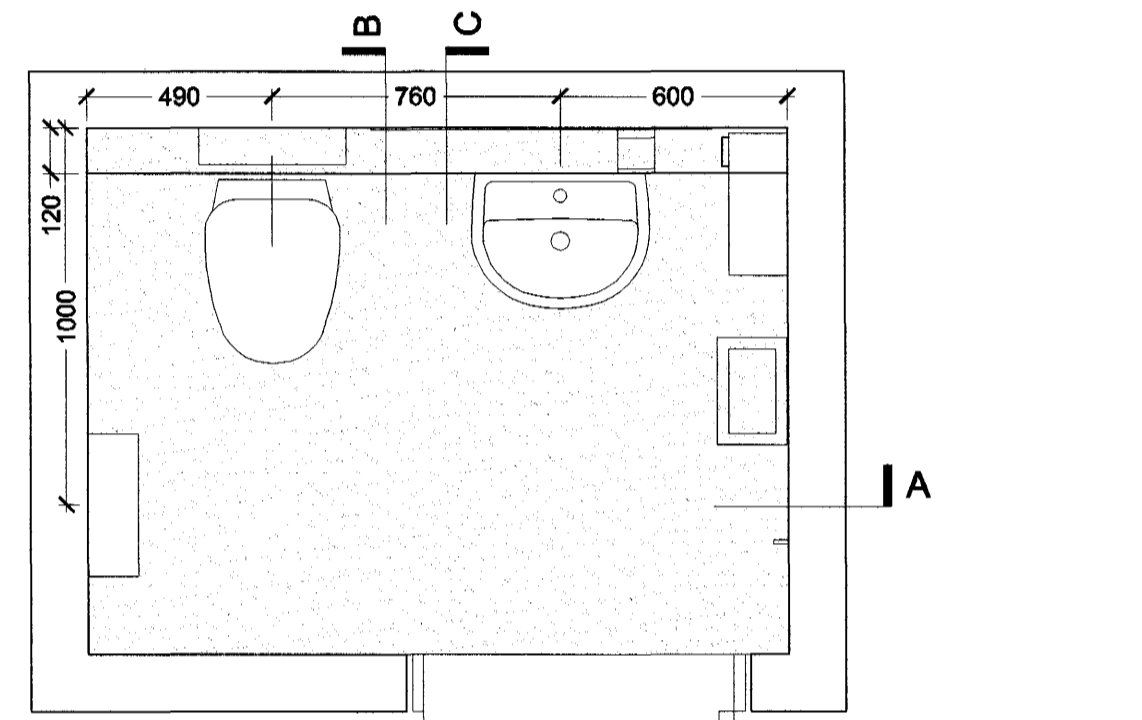


Lykillmynd mkr: 1:1500

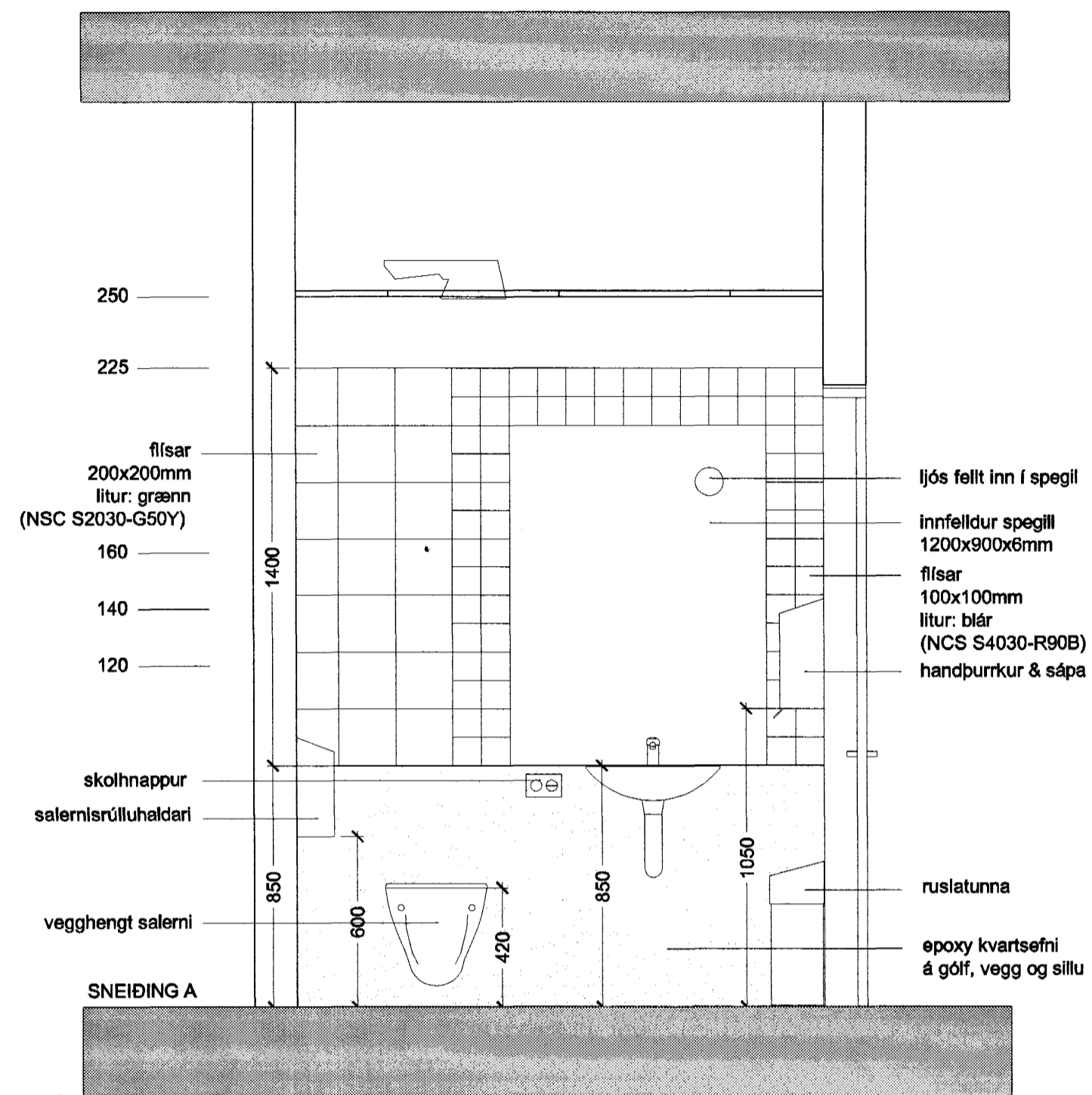


SALERNI A

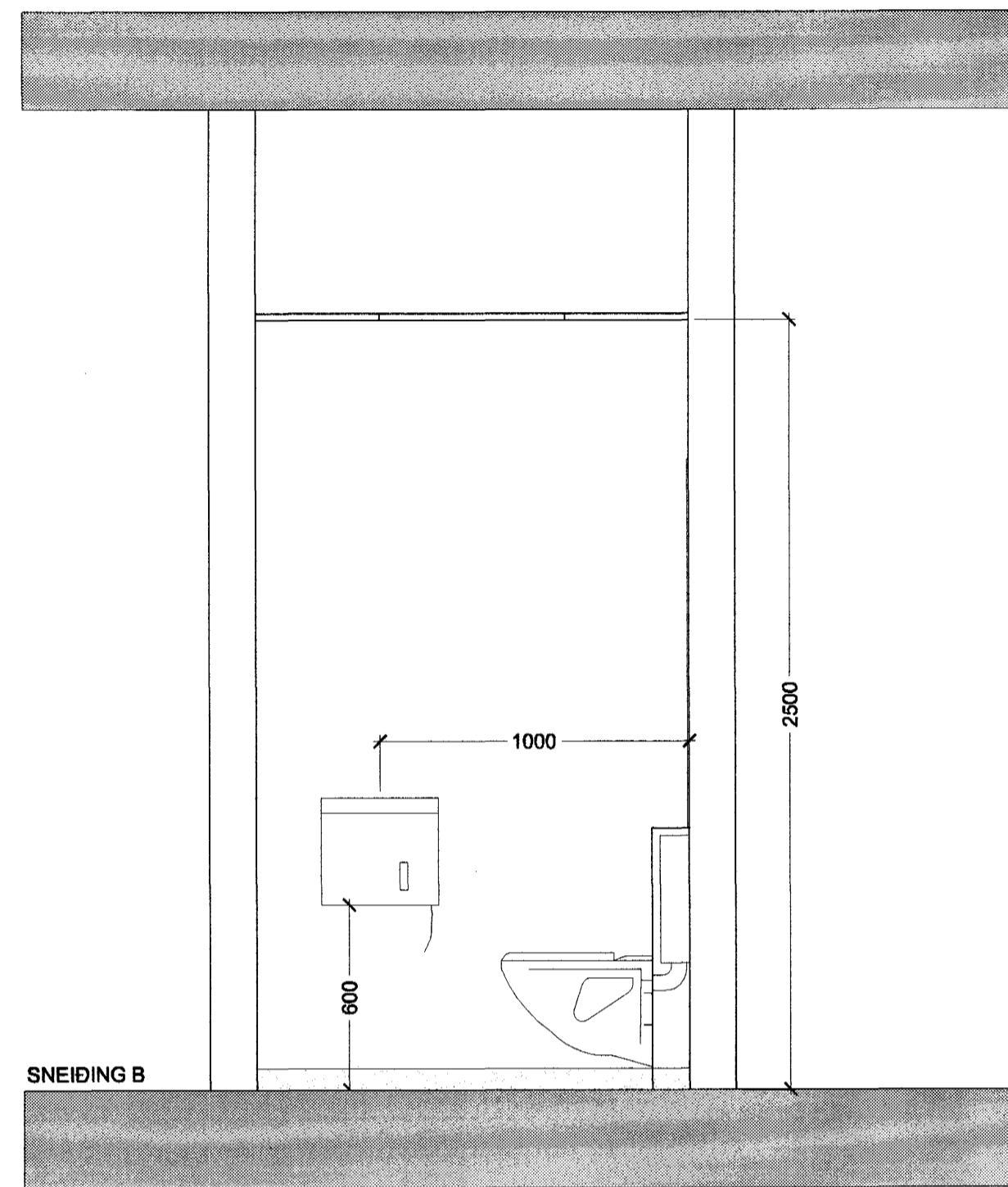


SALERNI B

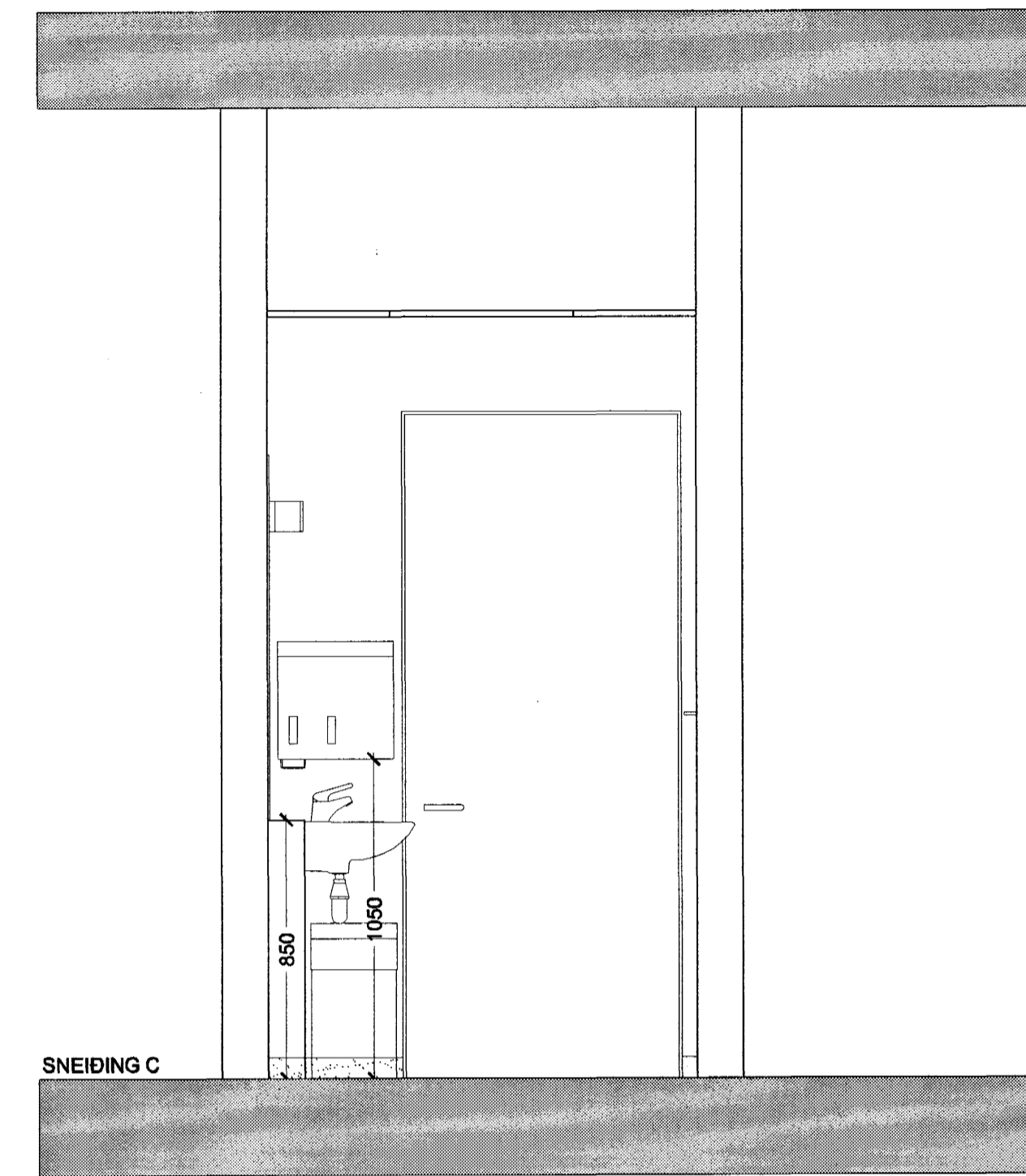
Hefur sömu innréttingu og salerni A nema flísalögn er frábrugðin.  
Flís 100x100 litur: appelsínugulur (NCS S2570-Y40R)  
Flís 200x200 litur: gulur (NCS S1040-Y20R)



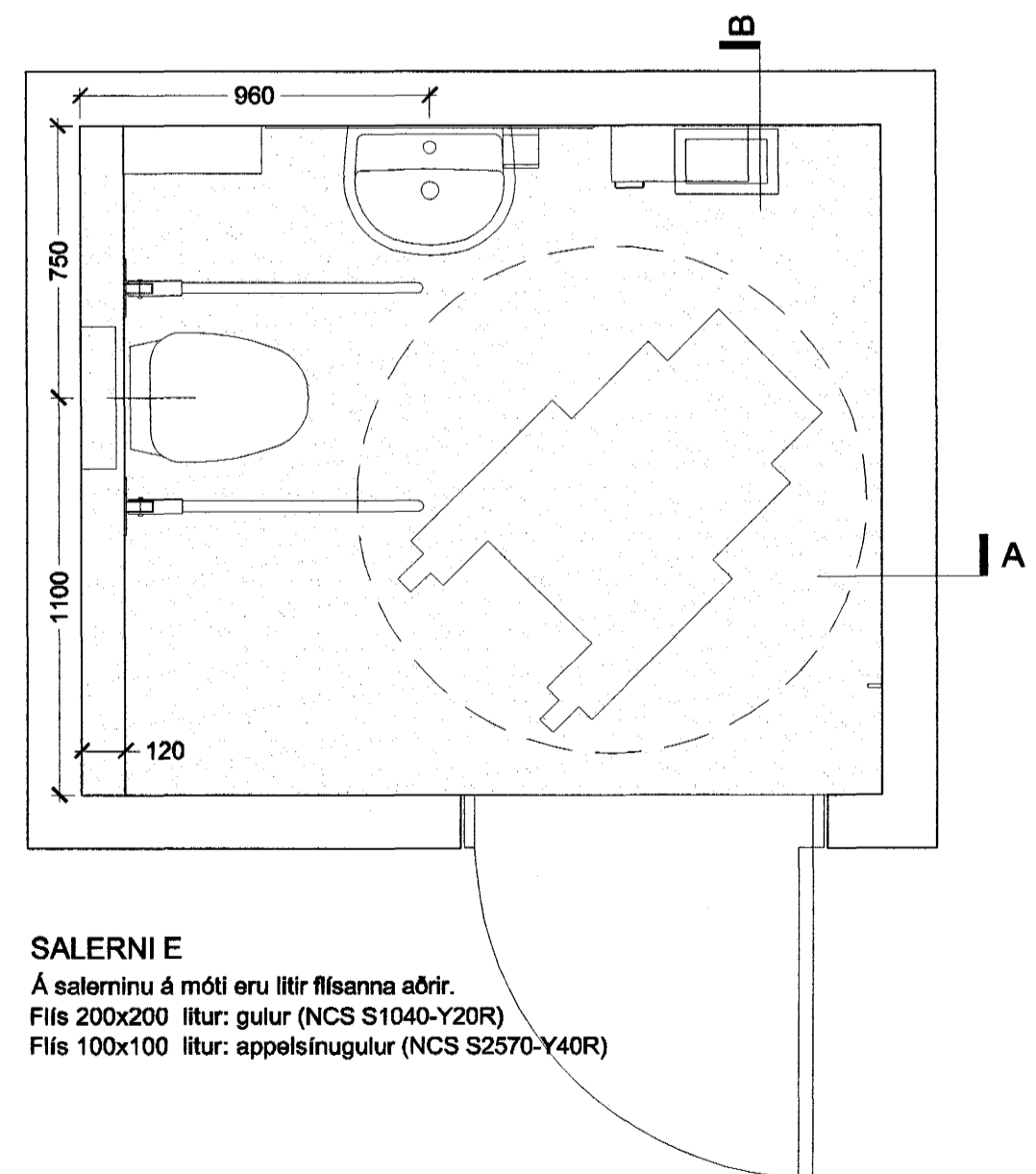
SNEIDING A



SNEIDING B

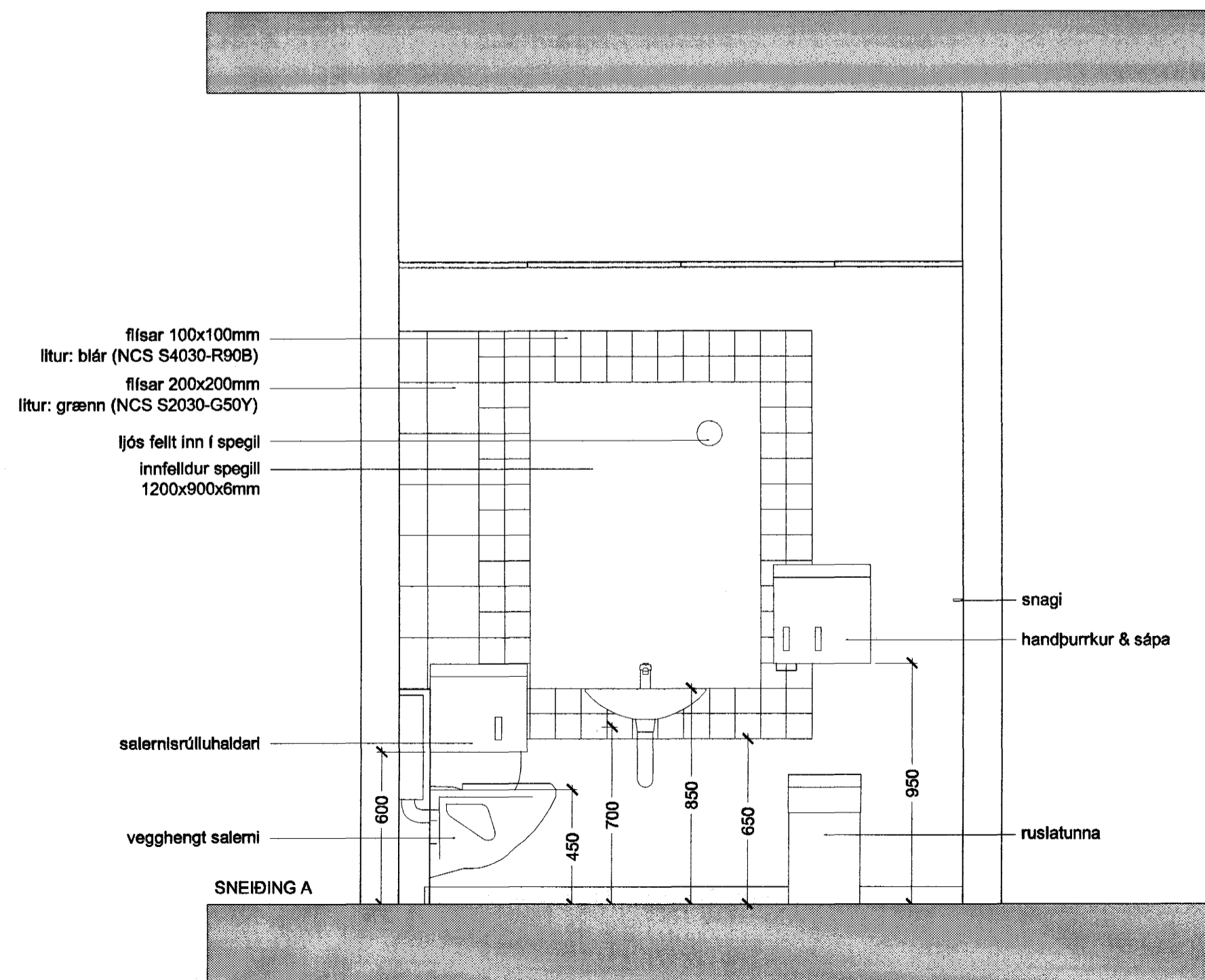


SNEIDING C

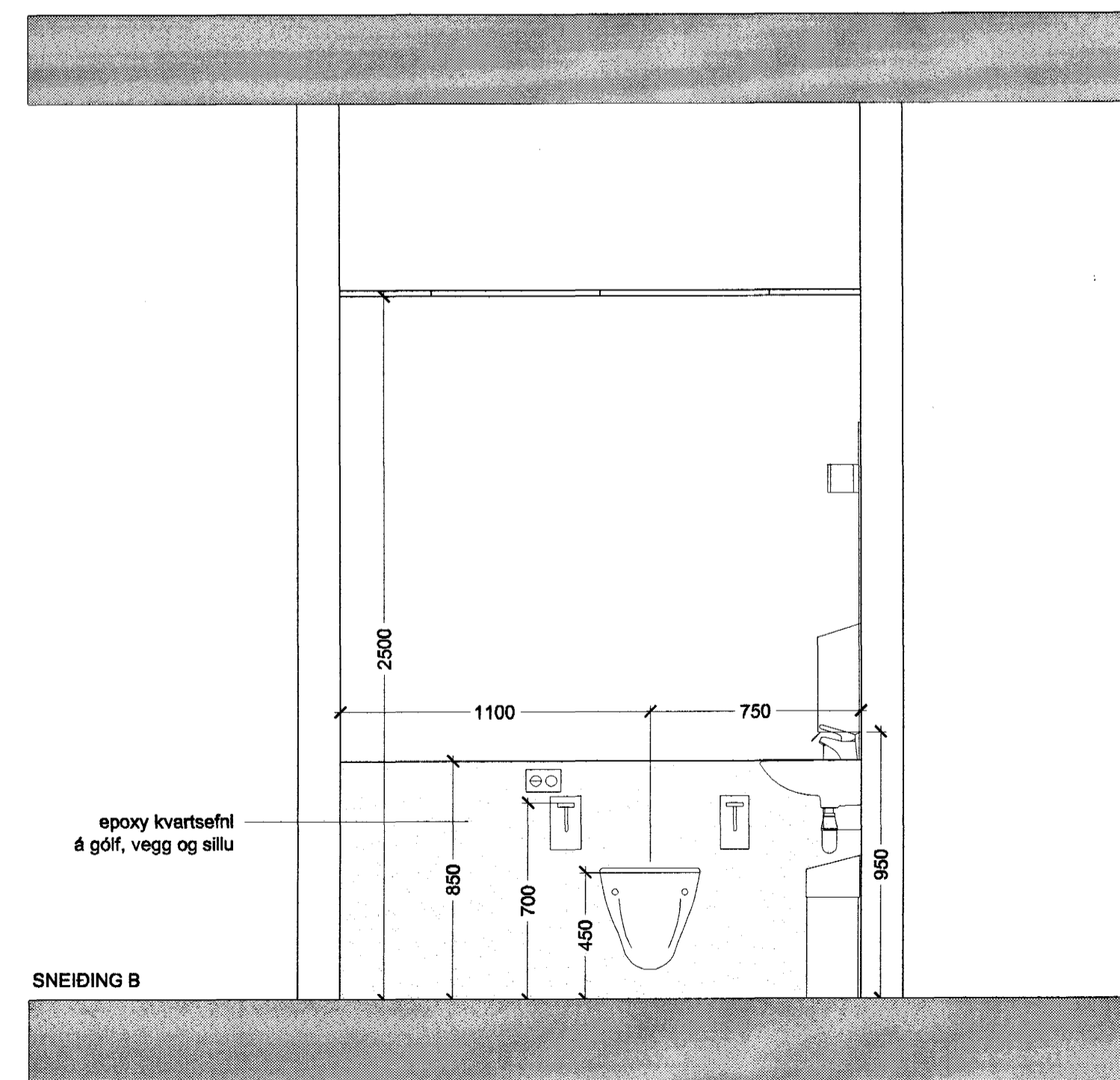


SALERNI E

Á salerninu á móti eru litir flísanna sömr.  
Flís 200x200 litur: gulur (NCS S1040-Y20R)  
Flís 100x100 litur: appelsínugulur (NCS S2570-Y40R)



SNEIDING A



SNEIDING B

VINNUTEIKNING

04. JUN 2003

Fastignafélag Hafnarfjarðar

VÍÐISTADASKÓLI, VIÐBYGGING

Hrauntungu 7, stgr. 1400-01 43100070 0240

HLUTATEIKNING

INNRETTINGAR

SALERNI A, B og E

MKV.: 1:20

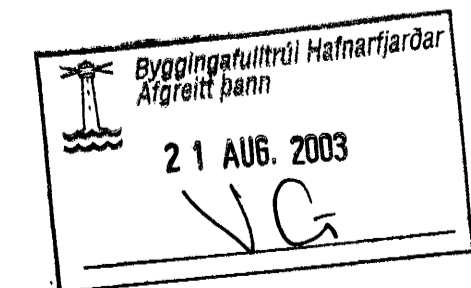
DAGS: 14.03.2003

TEIKNAD: AE

SKRÁ: 0240, (71)4.03.dwg

(79)4.01

Frumútg.



Jón Ólafur Ólafsson FAI

kt: 09068-4950

Sigurður Einarsson FAI

kt: 110487-2789

Sigurður Harðarson FAI

kt: 030446-3999

BATTERIÐ

ARKITEKTARFIRM

kt: 521291-1259

Trönuhrauni 1

220 Hafnarfréði

S: 54 54 700 F: 54 54 701

Netfang: batteri@arkitekt.is

Heimasíða: www.arkitekt.is

© BATTERIÐ EHF

ÖLL AFRYKT OG AFRYKTUN TEIKNINGAR EÐ HLUFTA EÐA Í HÉLD ER HÁÐ SÖFULEGU LEYTI HÖFUNDRA