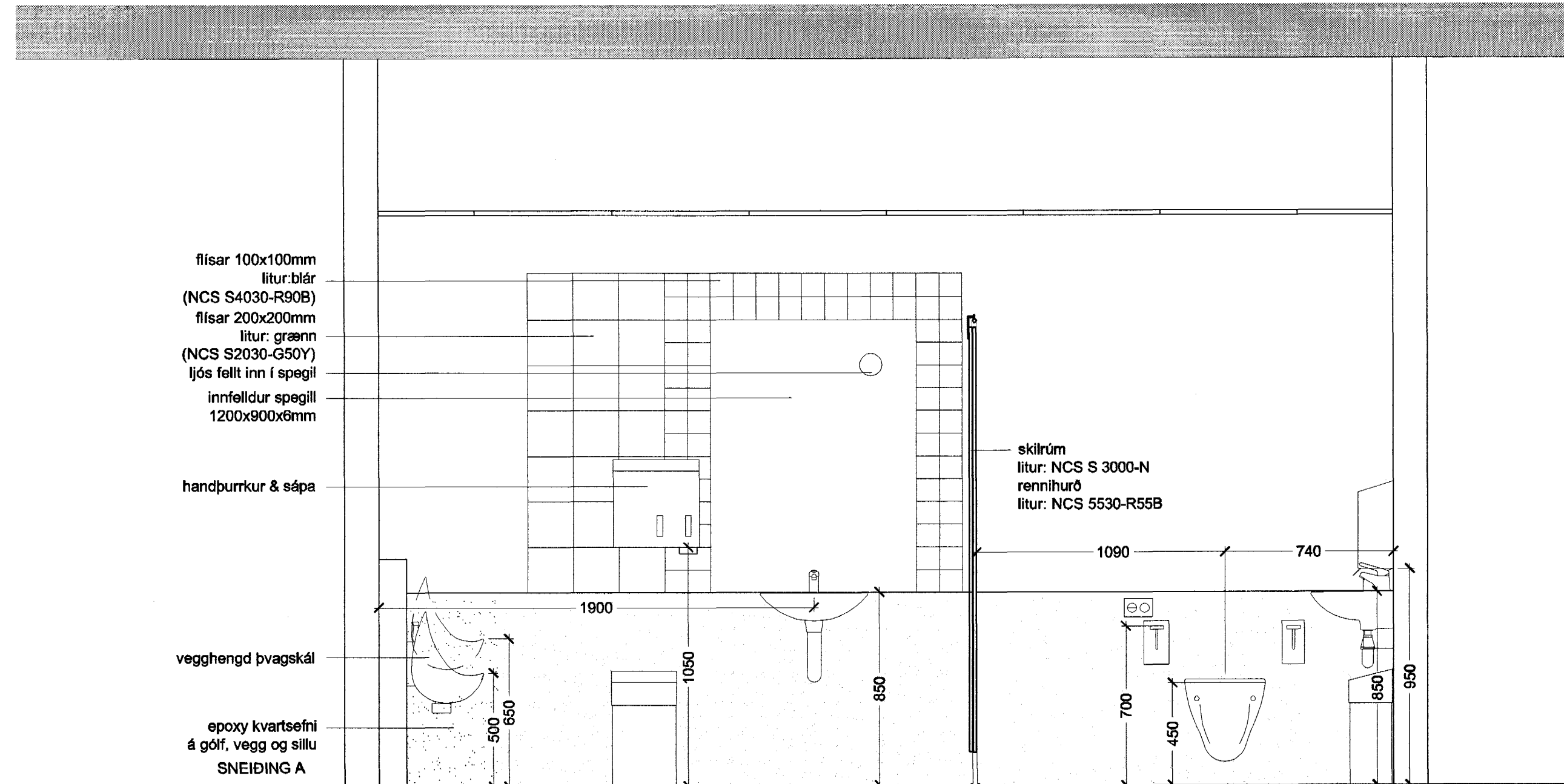
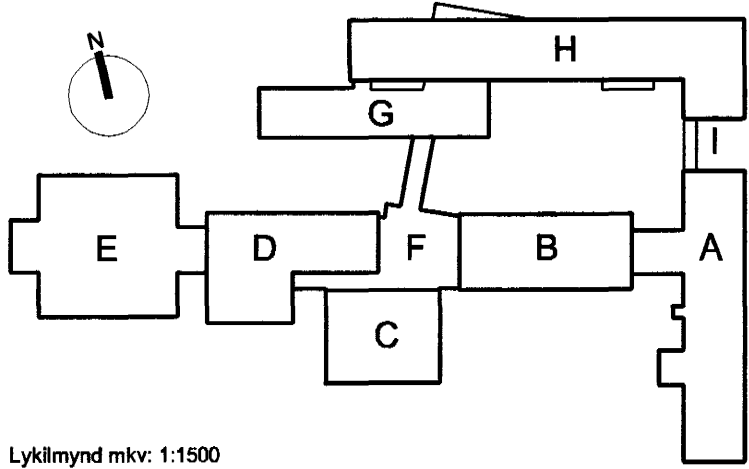


SALERNI D

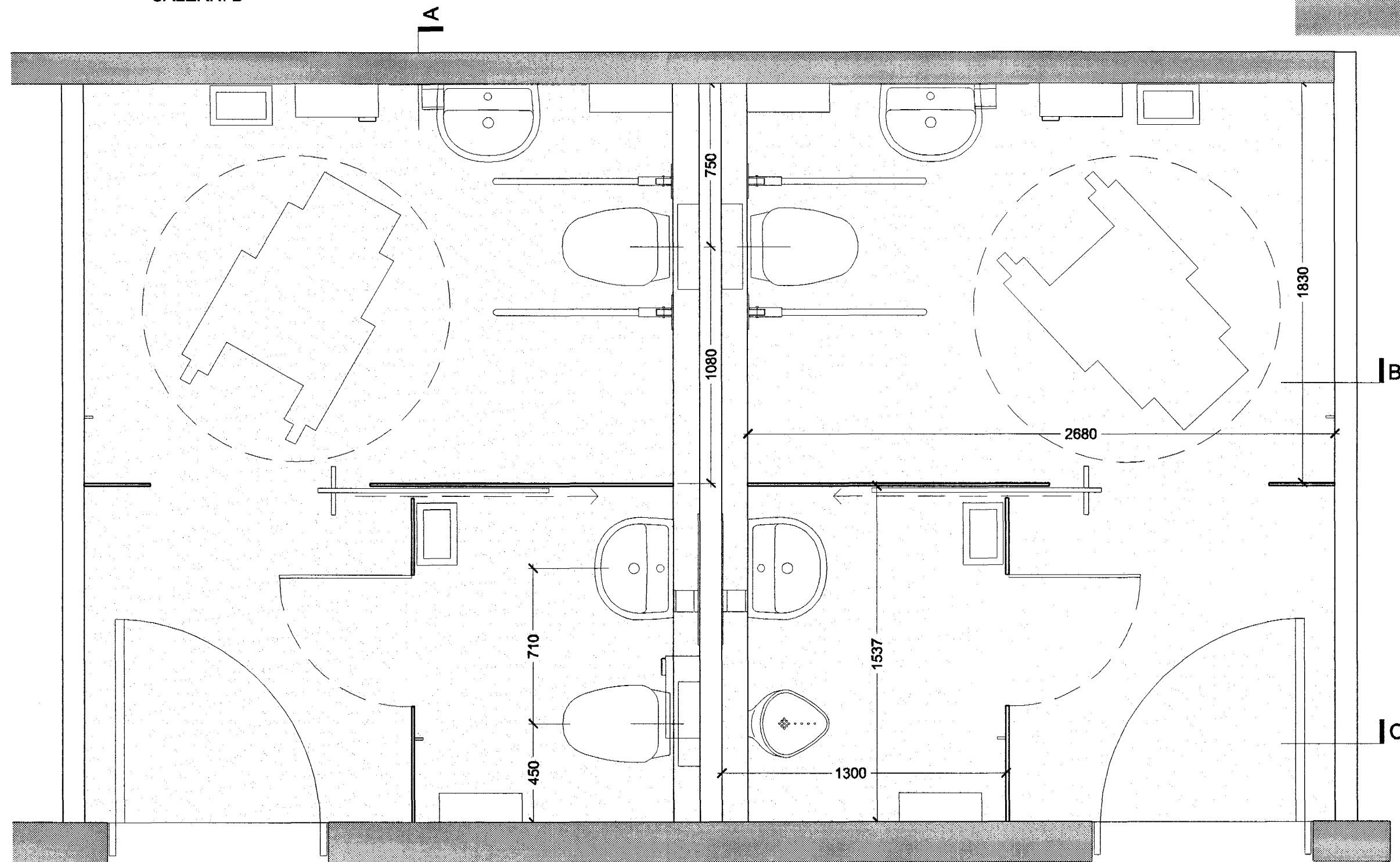


SNEIDING A

Höfundur eldri bygginga: Þorvaldur Kristmundsson

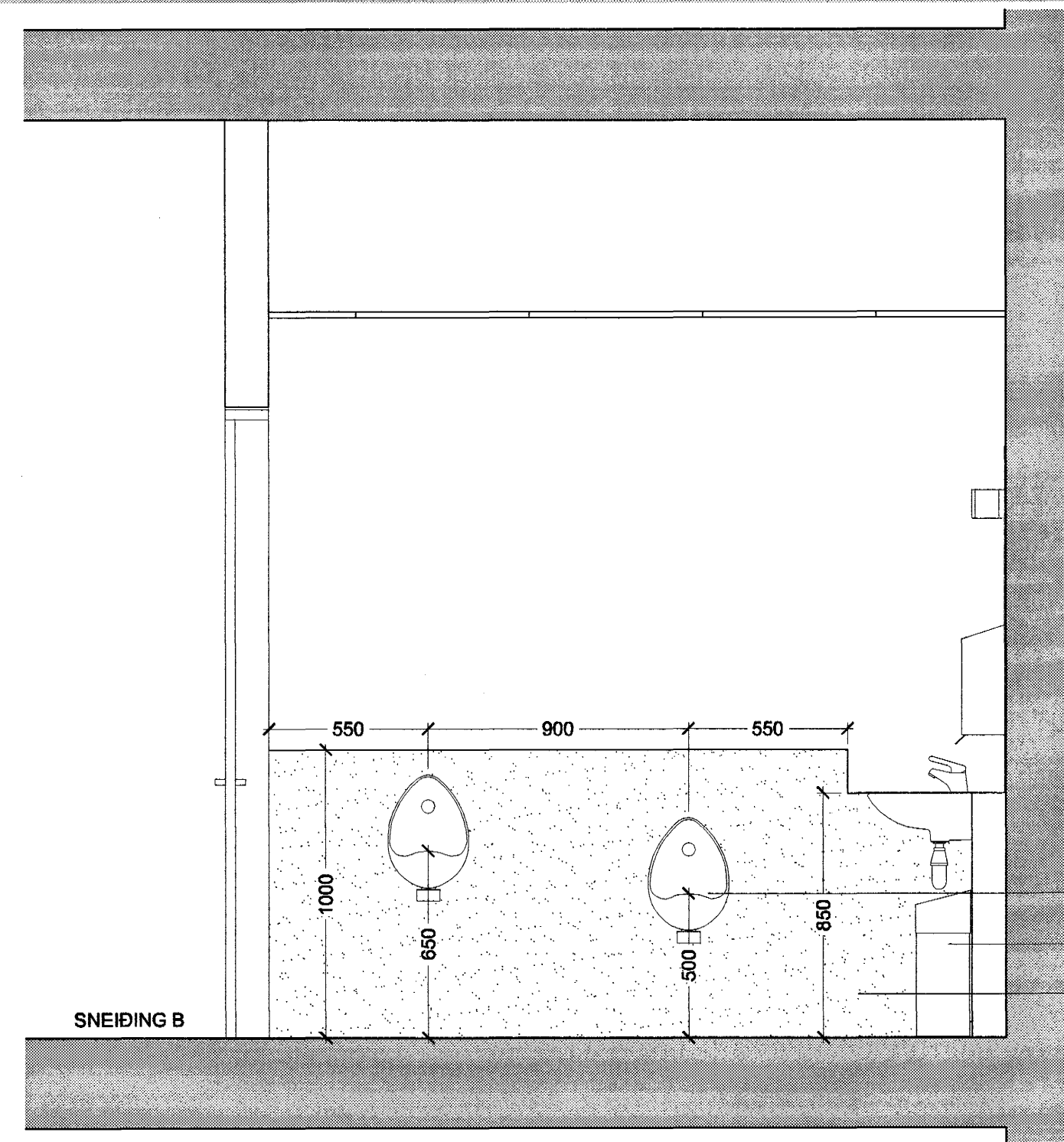


Lyklmynd mkv: 1:1500

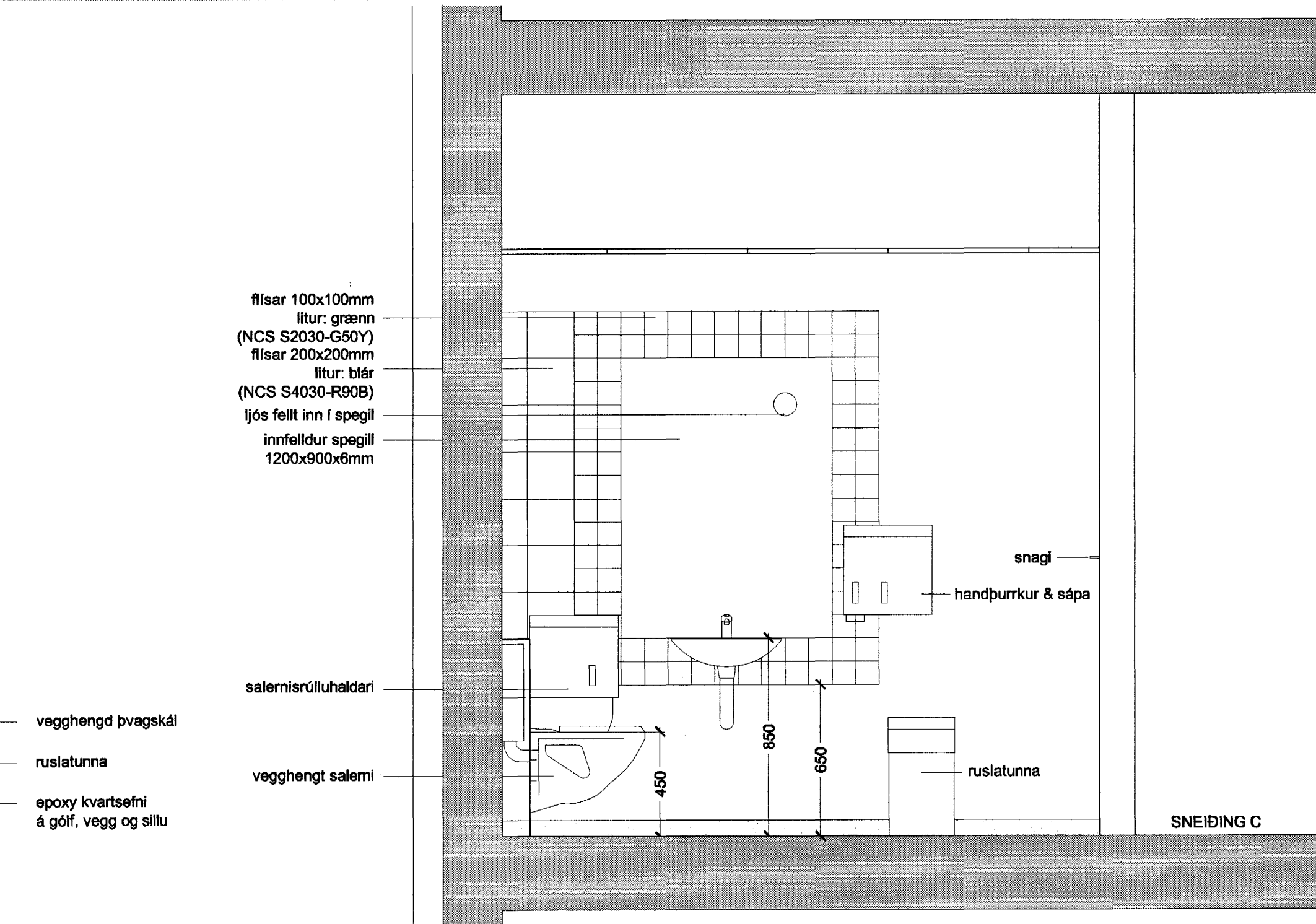


SALERNI G1

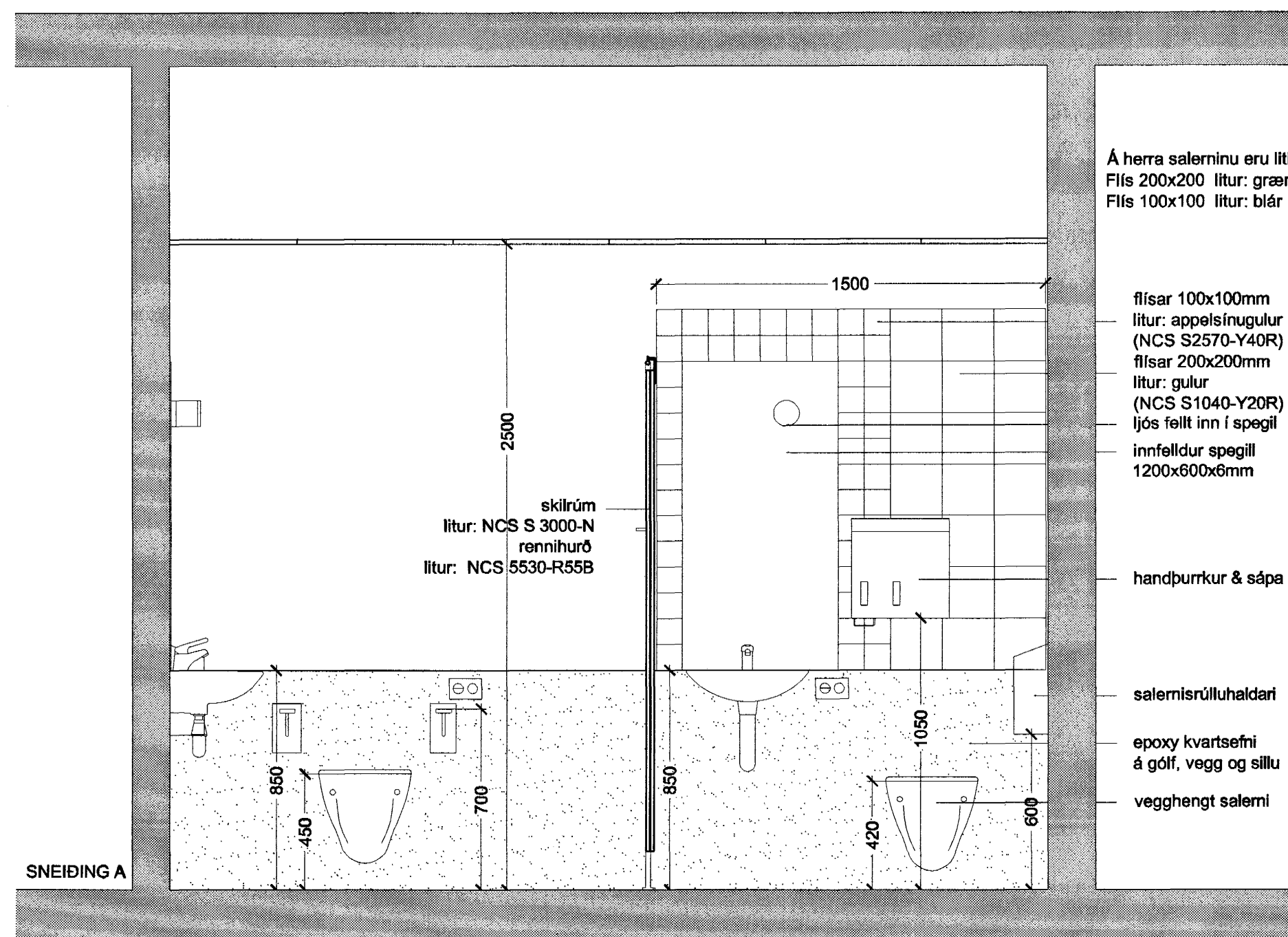
SALERNI G2



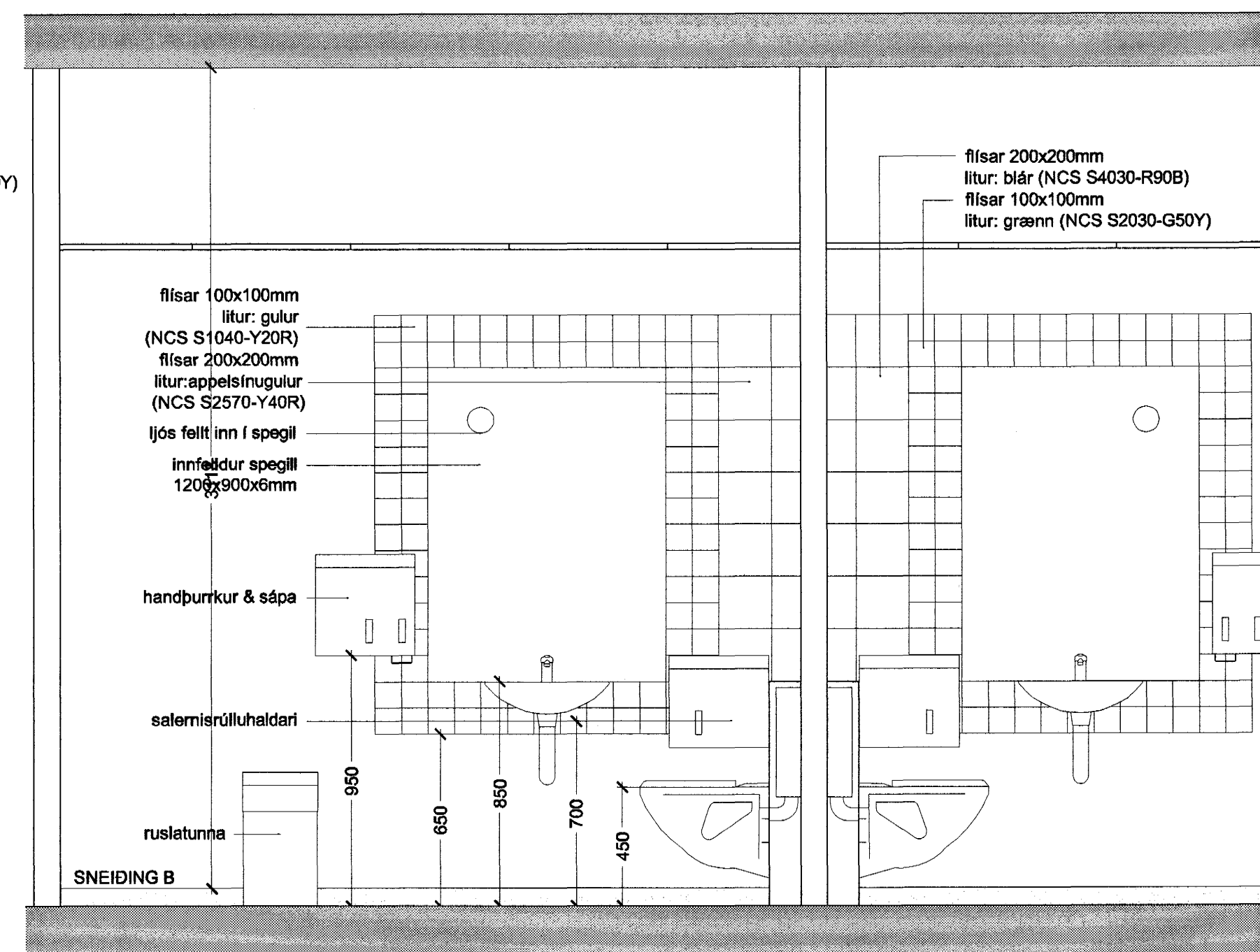
SNEIDING B



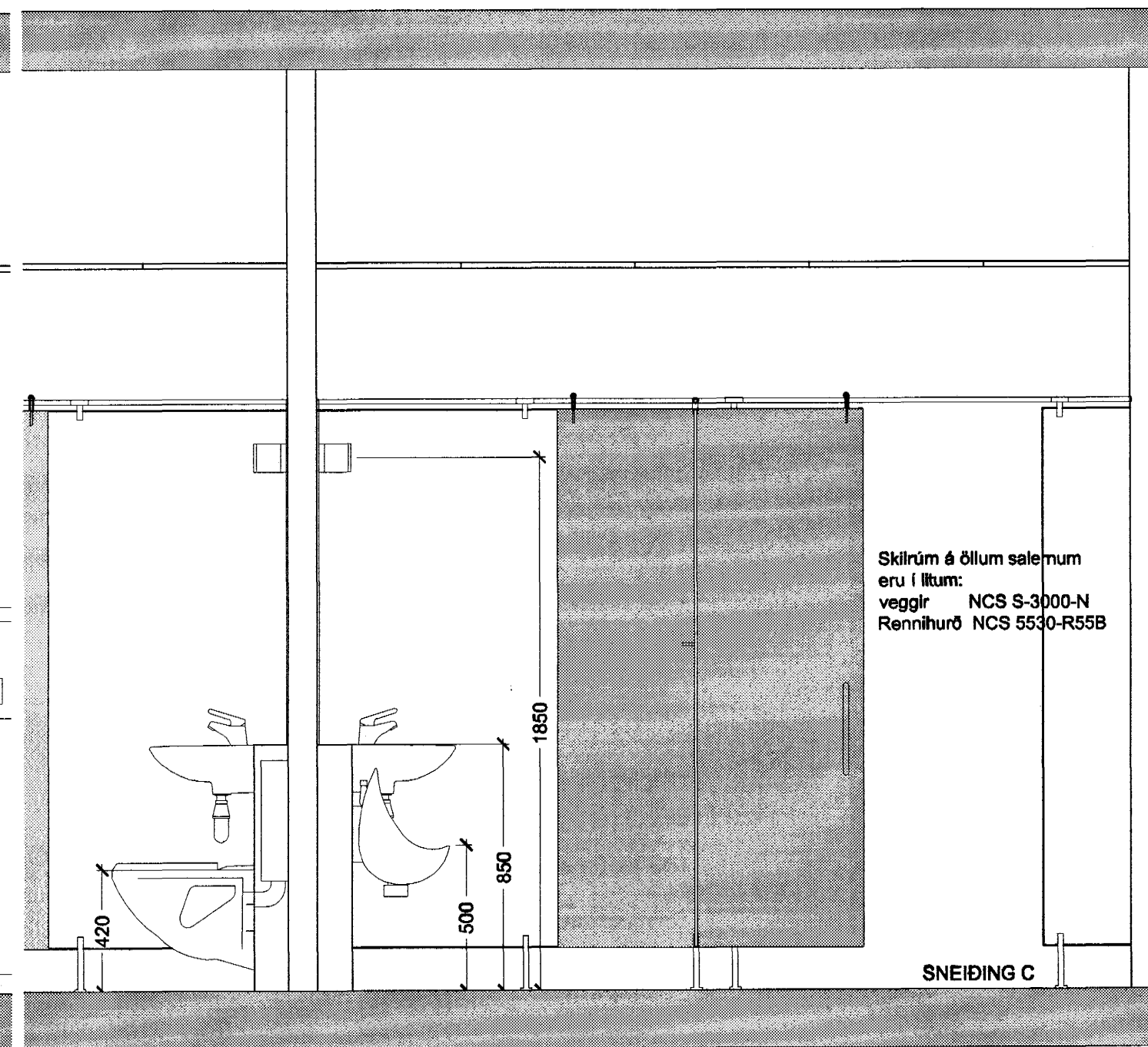
SNEIDING C



SNEIDING A



SNEIDING B



SNEIDING C

Á herra salerninu eru lítr flisanna aðrir
Flís 200x200 litur: grænn (NCS S2030-G50Y)
Flís 100x100 litur: blár (NCS S4030-R90B)

- flísar 100x100mm litur: appelsínugulur (NCS S2570-Y40R)
- flísar 200x200mm litur: gulur (NCS S1040-Y20R)
- ljós fellt inn í spegil
- innfældur spegill 1200x600x6mm
- handþurrkur & sápa
- salernisrúluhaldari
- epoxy kvartsefni á gólf, vegg og sillu
- vegghegt salerni

flísar 200x200mm litur: blár (NCS S4030-R90B)
flísar 100x100mm litur: grænn (NCS S2030-G50Y)

- flísar 100x100mm litur: gulur (NCS S1040-Y20R)
- flísar 200x200mm litur: appelsínugulur (NCS S2570-Y40R)
- ljós fellt inn í spegil
- innfældur spegill 1200x900x6mm
- handþurrkur & sápa
- salernisrúluhaldari
- ruslatunna

Skilrík á öllum salernum eru í litum:
veggir: NCS S-3000-N
Rennihurð: NCS S530-R55B

Byggingatútrúi Hafnarfjarðar
Afgreitt þann
21. AUG. 2003
VG
VINNUTEIKNING
04. JUN 2003

Fasteignafélag Hafnarfjarðar
VÍÐISTÁÐASKÓLI, VÍÐBYGGING
Hrauntunga 7, stgr. 1400-01 4310070 0240
HLUTATEIKNING
INNRETTINGAR
SALERNI D OG G
MKV.: 1:20
DAGS: 14.03.2003
TEIKNAD: AE
SKRÁ: 0240, (71)4.03.dwg
(79)4.03
Frumútg.

BATTERIÐ
Jón Ólafur Ólafsson FAI
kt. 030446-3999
Sigurður Einarsson FAI
kt. 140457-2789
Sigurður Harðarson FAI
kt. 030446-3999
S: 54 54 700 F: 54 54 701
Netfang: batteri@arkitekt.is
Helmasíða: www.arkitekt.is