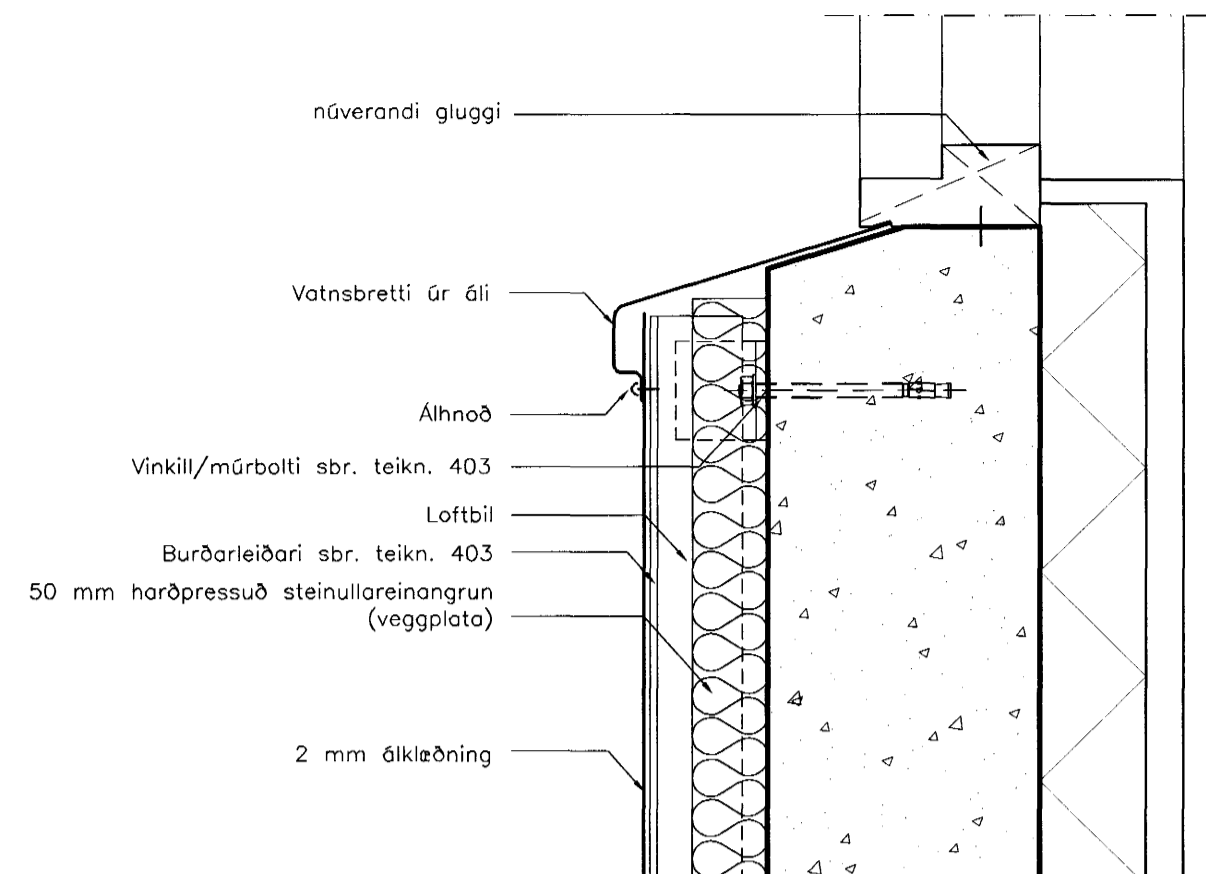
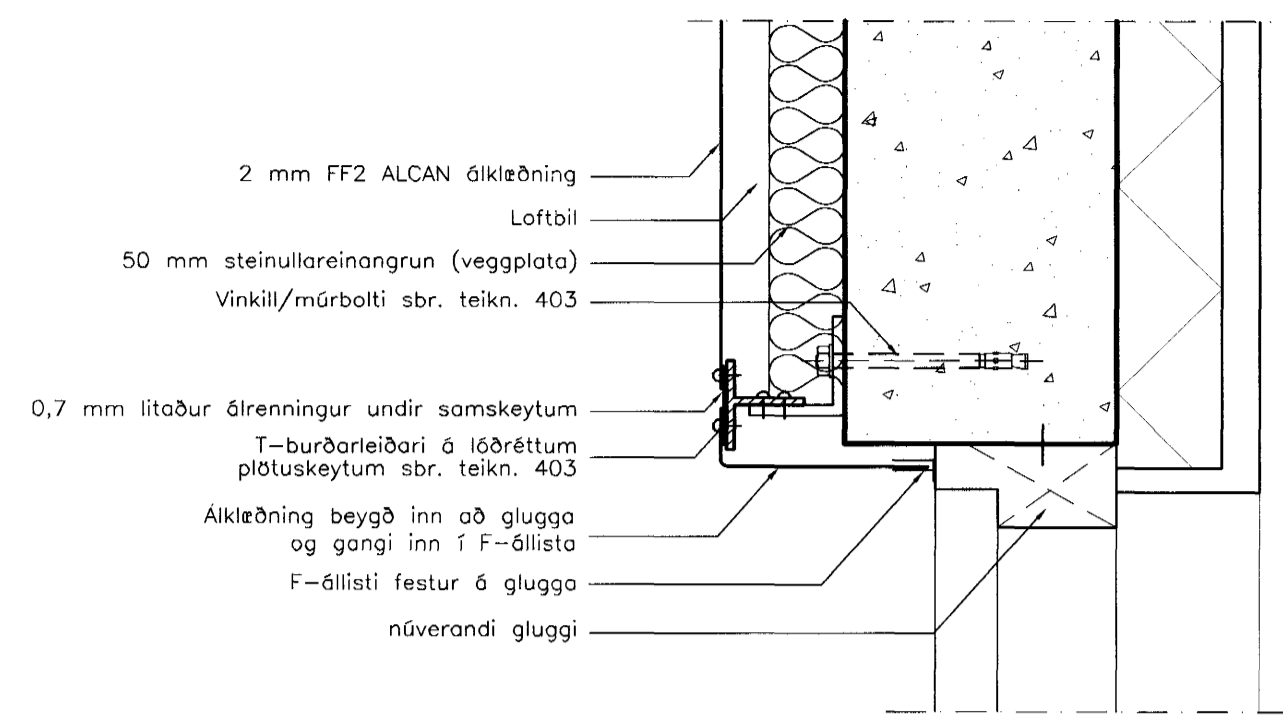


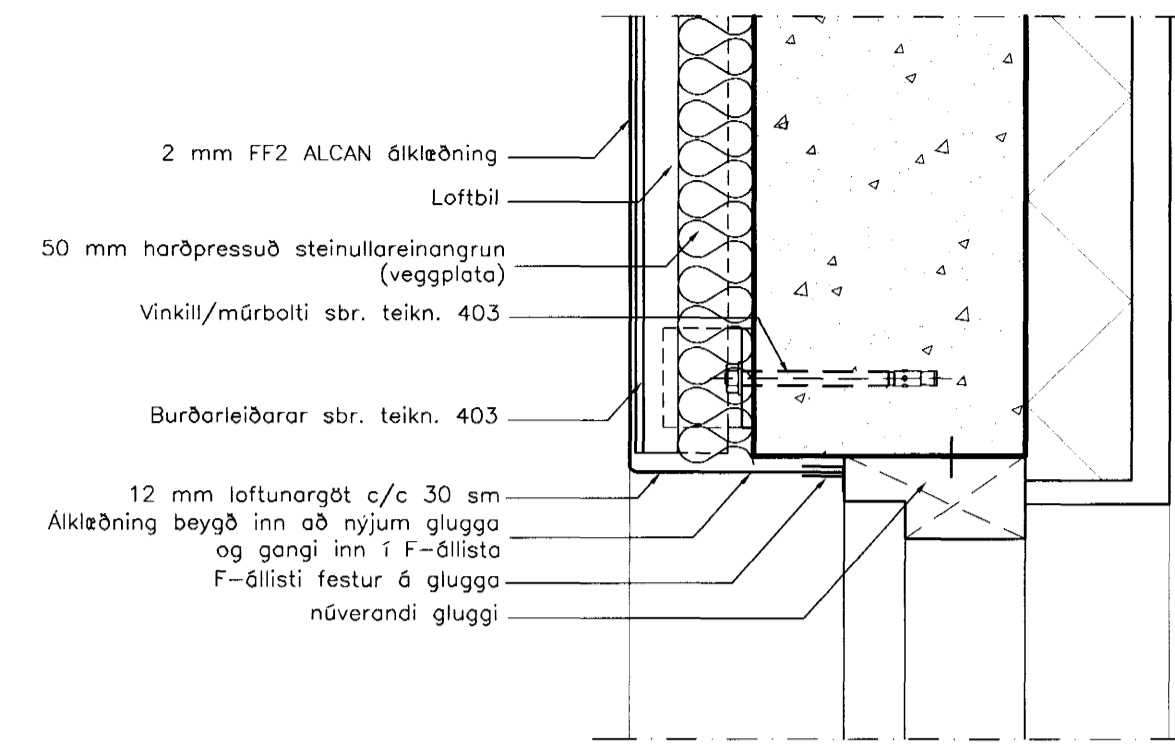
DEILI 1 (frágangur við jörð)
MKV. 1:5



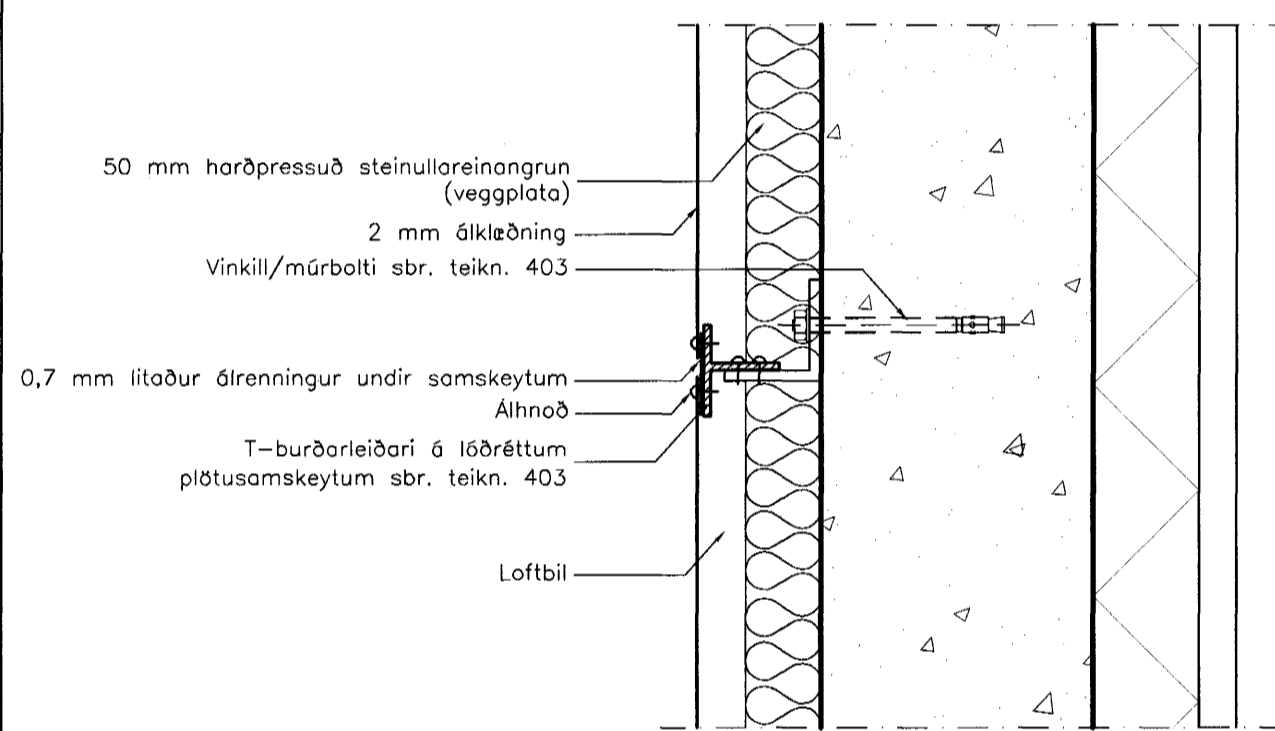
DEILI 2 (frágangur undir gluggum)
mkv. 1:5



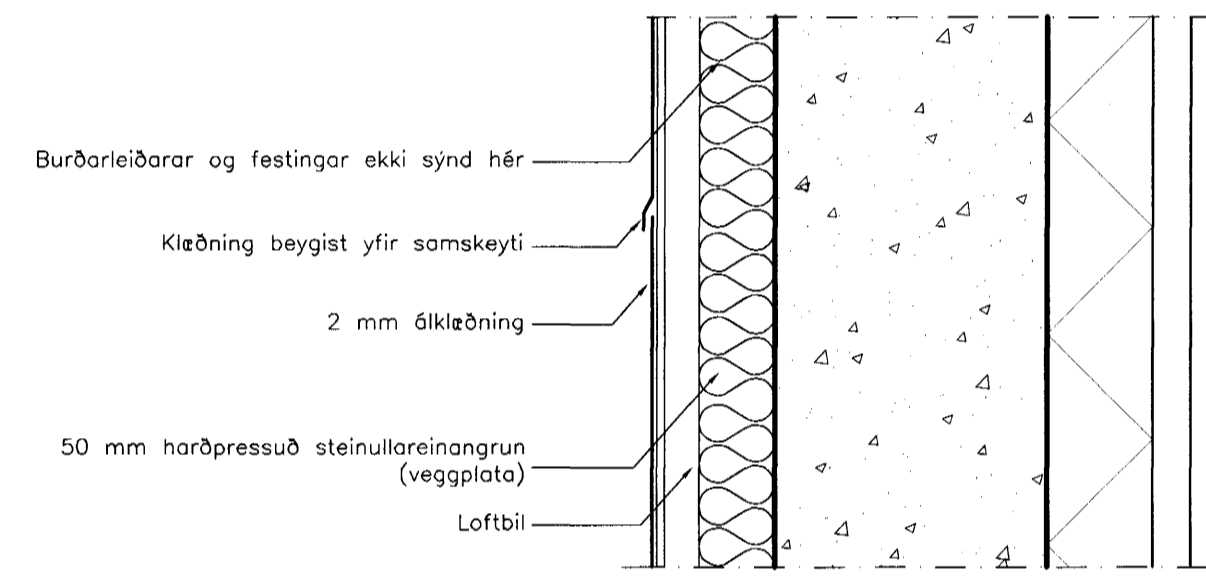
DEILI 3 (frágangur við gluggahliðar)
mkv. 1:5



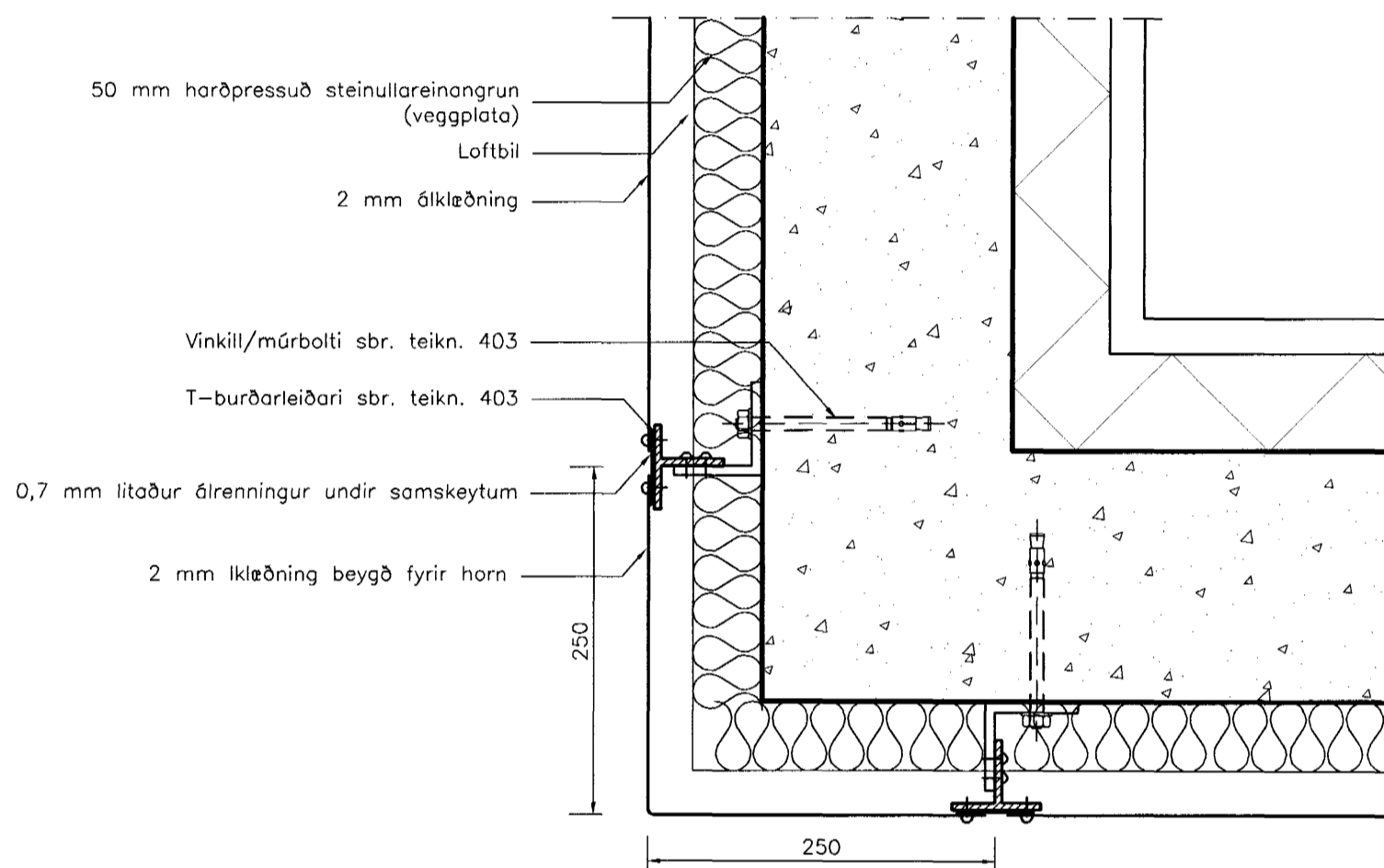
DEILI 4 (frágangur ofan við glugga)
mkv. 1:5



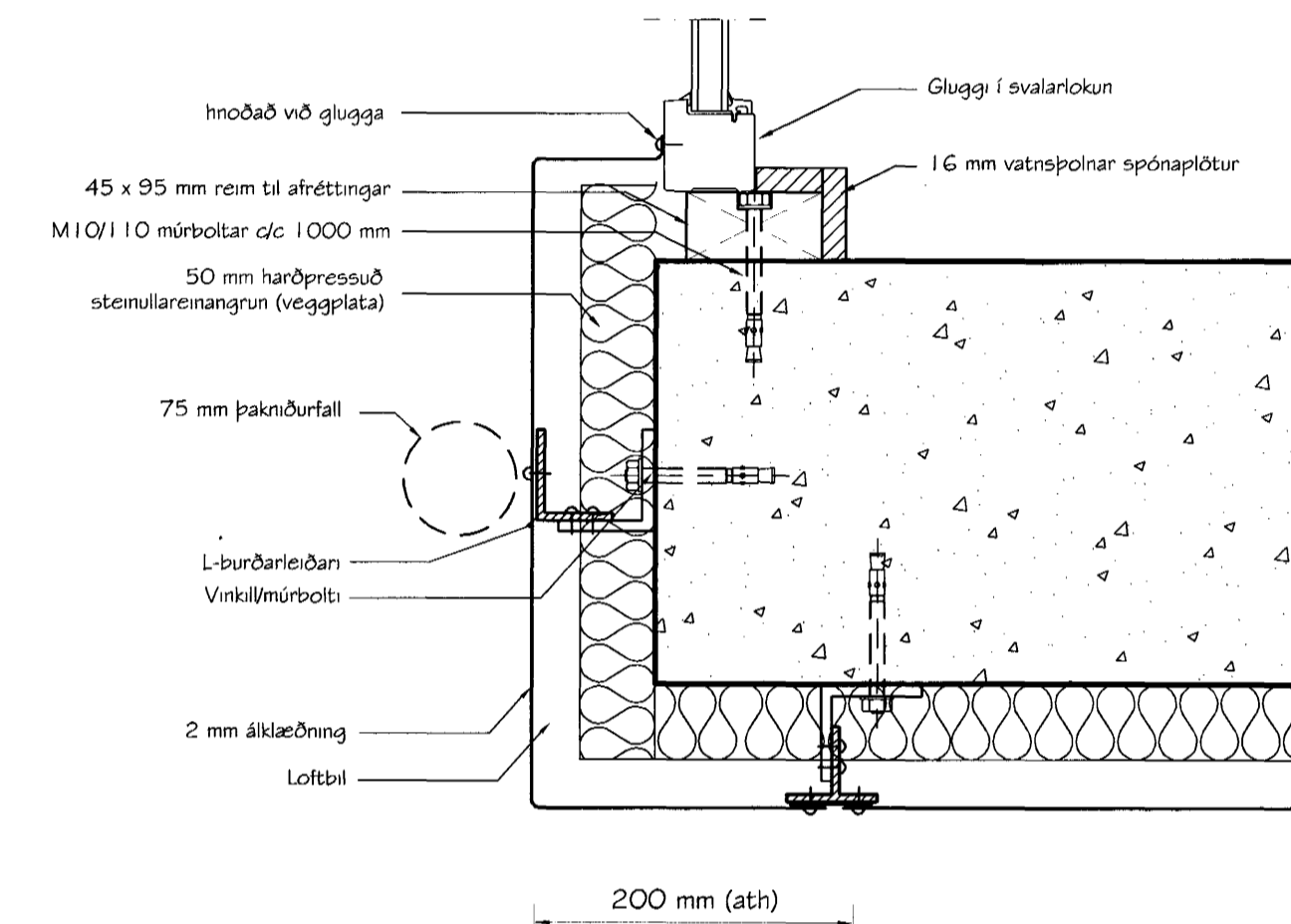
DEILI 5 (lóðrétt plötusamskeyti)
mkv. 1:5



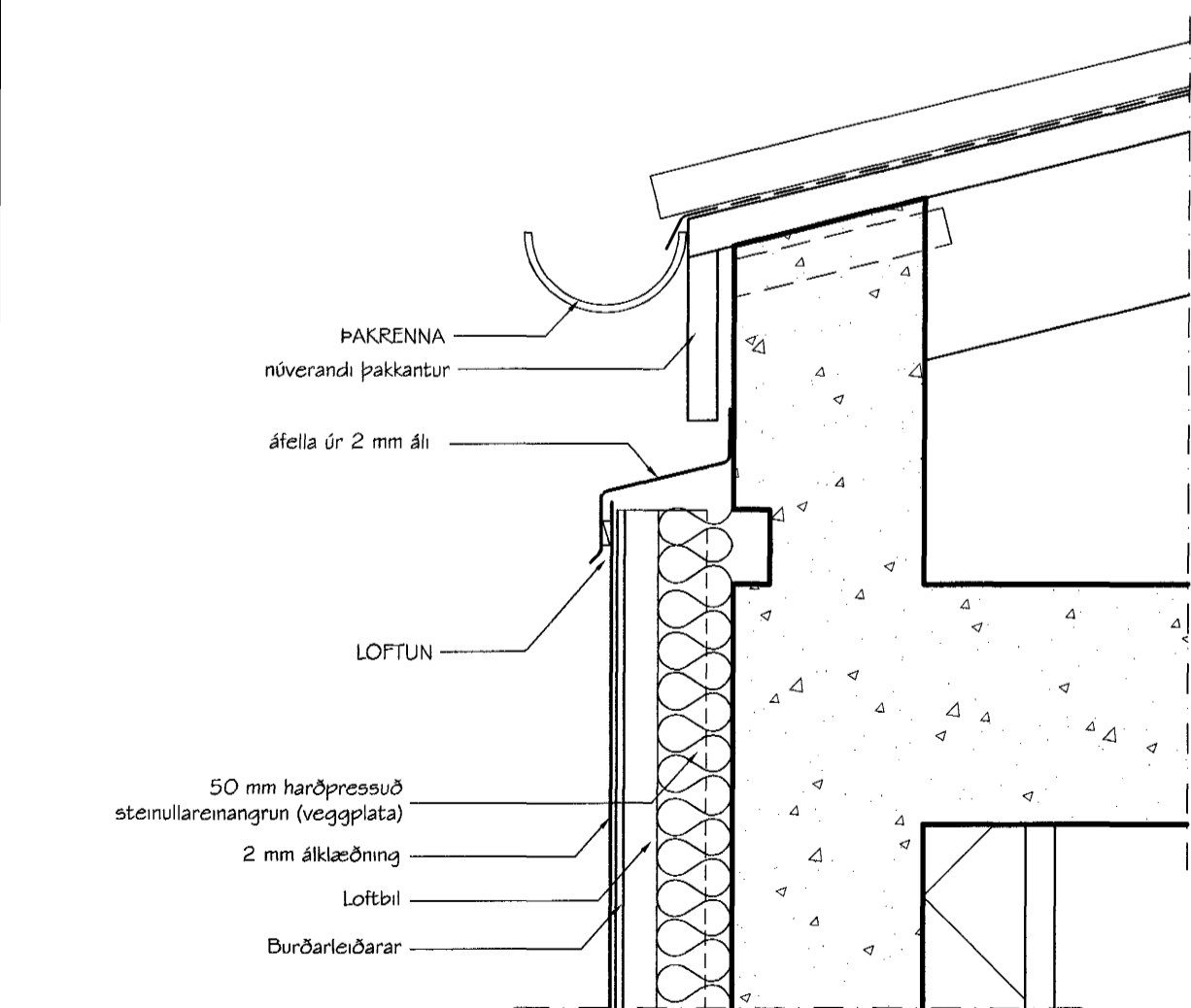
DEILI 6 (frágangur á lóðréttum plötusamskeytum)
mkv. 1:5



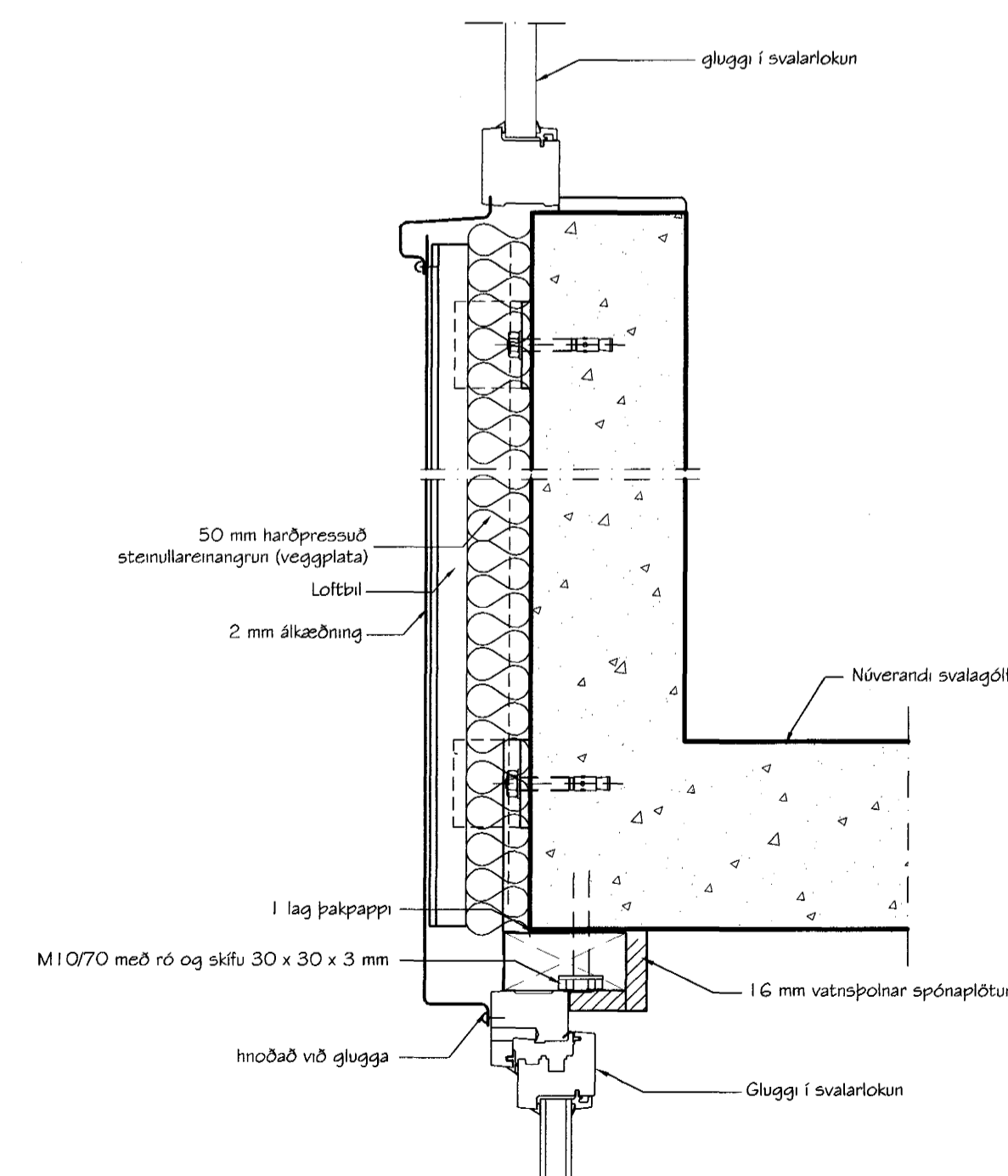
DEILI 7 (frágangur á úthornum)
mkv. 1:5



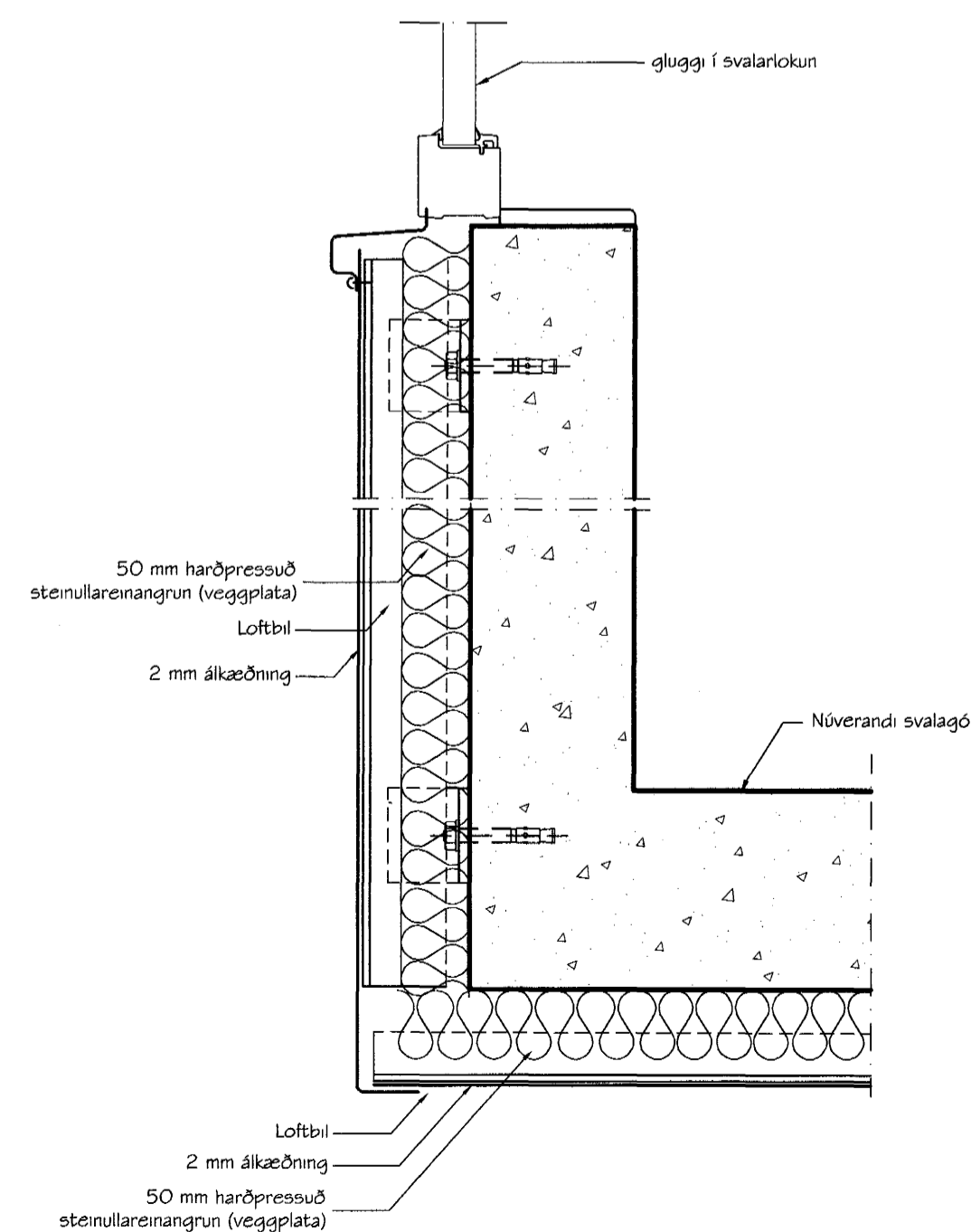
DEILI 8 (frágangur á úthornum við svalir 2.-4. h.)
MKV. 1:5



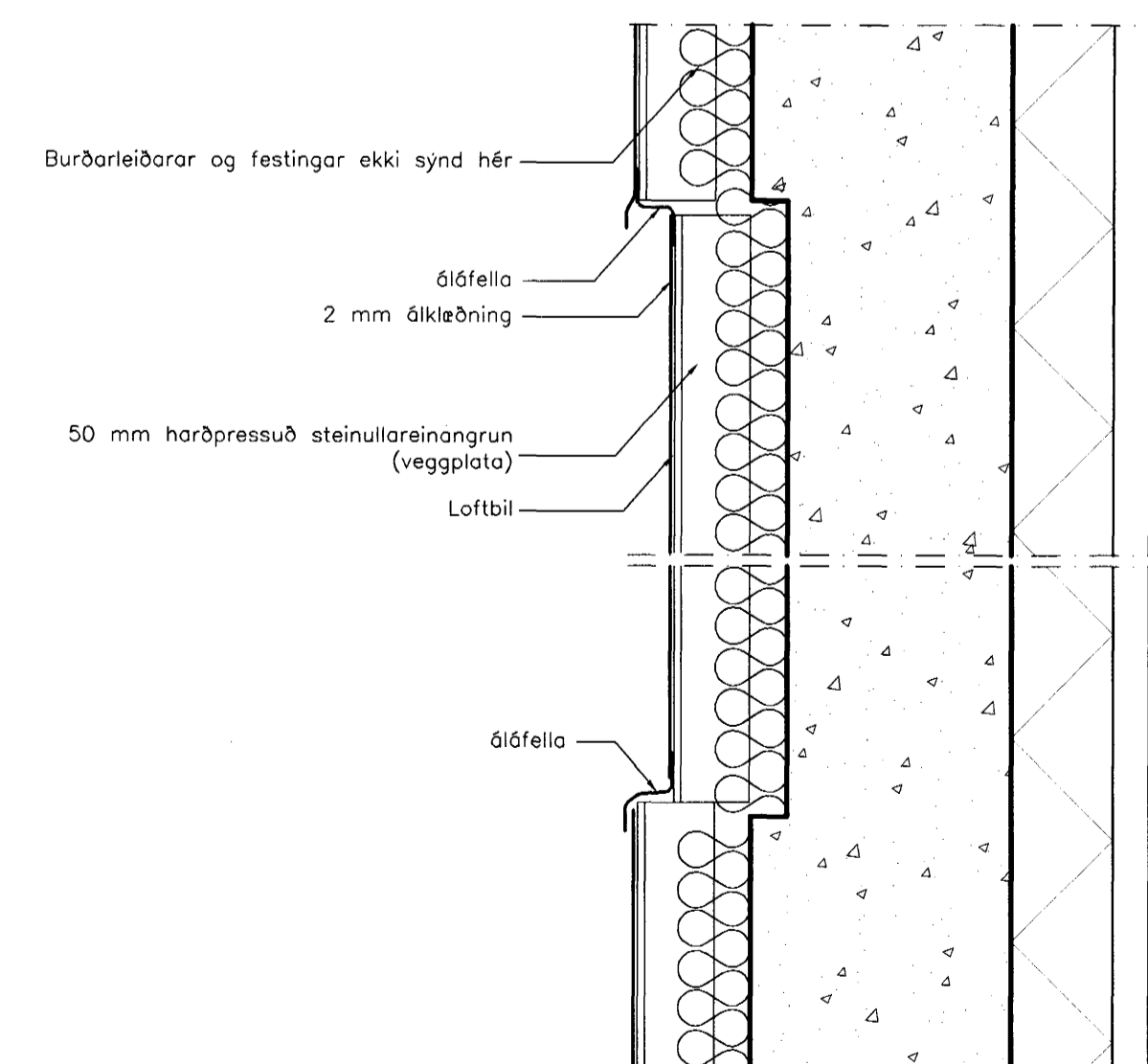
DEILI 9 (frágangur við þakbrún)
MKV. 1:5



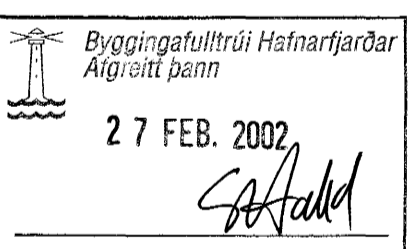
DEILI 10 (frágangur á milli svala, hæðarskil)
MKV. 1:5



DEILI 11 (frágangur undir svalalokunum)
MKV. 1:5



DEILI 12 (frágangur á lóðréttum stöllum í klæðningu)
mkv. 1:5



Br. nr.	Dags.	Af.	Breyting
(A)			
(B)			
(C)			
(D)			

**TEIKNISTOFAN
TORGIÐ**
RÁÐGJÖF - HÖNNUN - EFTIRLIT

ARMELI 36, 108 REYKJAVÍK, SÍMI 569-8866, FAX 569-8878
ÞORSTEINN FRIÐRÍÐSSON, Magnús Þ. Guðmundsson,
byggingateknifræðingur innanhússorkitekt.
Kt. 211055-5299 Kt. 240654-5559

**MÍÐVANGUR 10-16
HAFNARFJÖRÐUR**

Teikningarheiti: UTANHÜSSKLÆÐNING OG LOKUN SVALA
DEILIMYNDIR

Dags. 12.08.2001. Kvart. 1:5
Hönn. ÞF Teikn. ÞF Samp. *S. Adalsteinsson*
Verk. 01-903 Teikn. 401 Breyt. nr.