

BASE PLATE DETAIL BP-01  
LTS 5/8" BASE P. THK. 1/2"

BASE PLATE DETAIL BP-02  
A. BOLTS 3/4" BASE P. THK. 5/8"

BASE PLATE DETAIL BP-03  
A. BOLTS 1 1/4" BASE P. THK. 1"

BASE PLATE DETAIL BP-04  
A. BOLTS 1 1/4" BASE P. THK. 1"

BASE PLATE DETAIL BP-05  
A. BOLTS 1 1/4" BASE P. THK. 1"

BASE PLATE DETAIL BP-06  
A. BOLTS 3/4" BASE P. THK. 5/8"

BASE PLATE DETAIL BP-07  
A. BOLTS 3/4" BASE P. THK. 5/8"

BASE PLATE DETAIL BP-08  
LTS 3/4" BASE P. THK. 5/8"

BASE PLATE DETAIL BP-09  
A. BOLTS 3/4" BASE P. THK. 5/8"

BASE PLATE DETAIL BP-10  
A. BOLTS 3/4" BASE P. THK. 5/8"

BASE PLATE DETAIL BP-11  
A. BOLTS 5/8" BASE P. THK. 1/2"

BASE PLATE DETAIL BP-12  
A. BOLTS 5/8" BASE P. THK. 1/2"

FRAMED OPENING A.B. DETAIL (F-)  
A. BOLTS 1/2" BASE P. THK. 1/4"

FRAMED OPENING SCHEDULE

Main Frame Reactions at Lines 2-4 (BLDG.A)

NOTE: All reactions are shown in Kips. A negative value, indicates opposite direction.

Condition	Grid	Ver	Hor	Mom
DEAD + LIVE LOAD	A	25.7160	15.9950	0.0000
DEAD + LIVE LOAD	G	25.7160	15.9950	0.0000
DL + WL	A	-25.9790	24.3900	0.0000
DL + WL	G	-21.5520	5.1310	0.0000
DL + LL + WL	A	-3.2990	-10.0340	0.0000
DL + LL + WL	G	1.1280	-9.2250	0.0000
DL + WLR	A	-10.0290	-1.1700	0.0000
DL + WLR	G	-14.4560	20.4290	0.0000
DL + LL + WLR	A	12.6510	13.1860	0.0000
DL + LL + WLR	G	8.2240	6.0730	0.0000
DL+UNB SNOW L	A	20.5320	11.1660	0.0000
DL+UNB SNOW L	G	15.6430	-11.1660	0.0000
DL+UNB SNOW R	A	20.5320	11.1660	0.0000
DL+UNB SNOW R	G	15.6430	-11.1660	0.0000
DL+WLR+UNB SNOW L	A	-11.5190	-16.5010	0.0000
DL+WLR+UNB SNOW L	G	-11.9820	-2.7580	0.0000
DL+WLR+UNB SNOW R	A	4.4310	6.7190	0.0000
DL+WLR+UNB SNOW R	G	-4.8860	12.5400	0.0000
DL+WLR+UNB SNOW R	A	-11.5190	-16.5010	0.0000
DL+WLR+UNB SNOW R	G	-11.9820	-2.7580	0.0000
DL+WLR+UNB SNOW R	A	4.4310	6.7190	0.0000
DL+WLR+UNB SNOW R	G	-4.8860	12.5400	0.0000
DL+SEISMIC L	A	2.3470	0.1390	0.0000
DL+SEISMIC L	G	3.7260	-3.1380	0.0000
DL+SEISMIC R	A	3.7260	3.1380	0.0000
DL+SEISMIC R	G	2.3470	-0.1390	0.0000

Main Frame Reactions at Line 5 (BLDG.A)

NOTE: All reactions are shown in Kips. A negative value, indicates opposite direction.

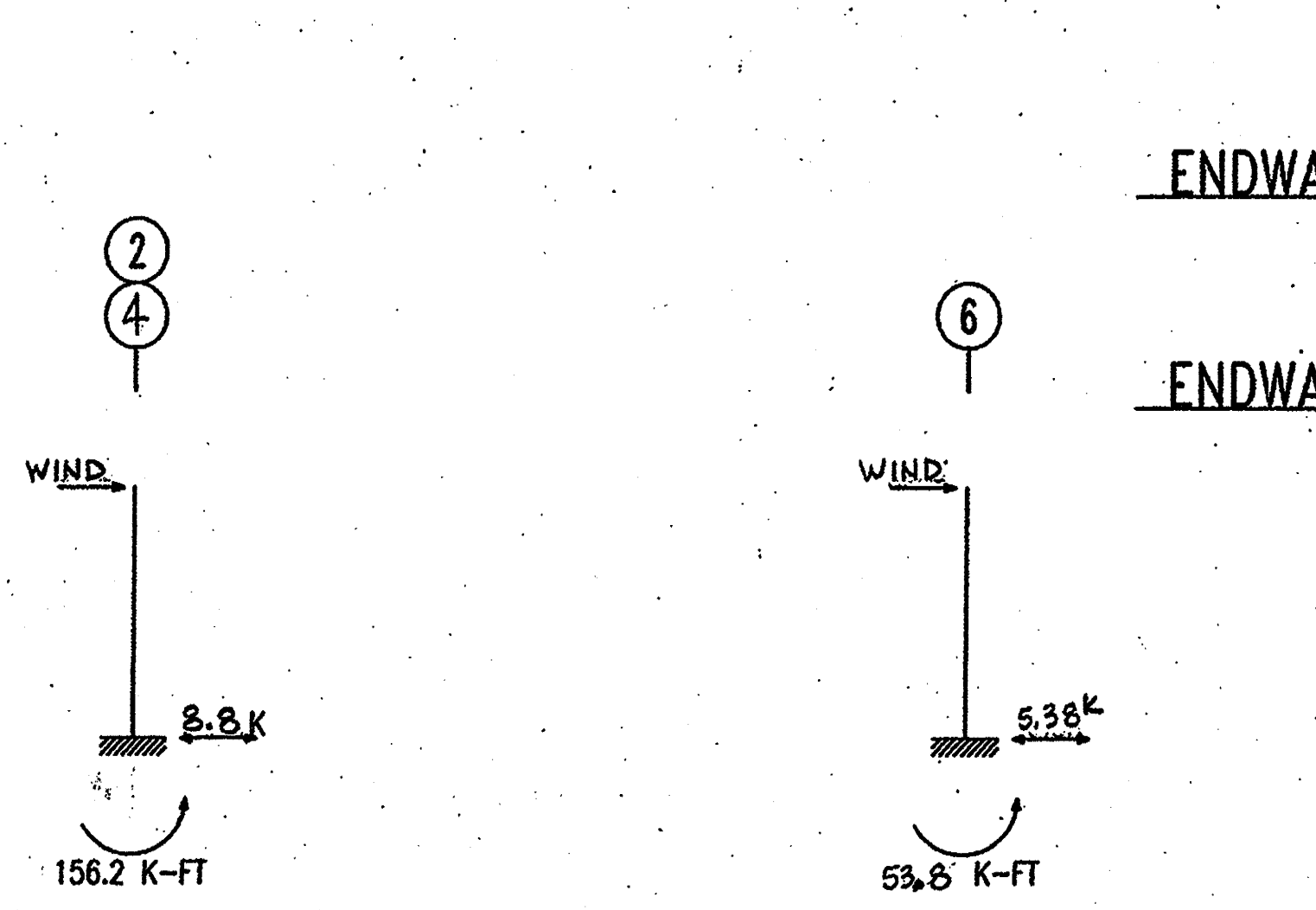
Condition	Grid	Ver	Hor	Mom
DEAD + LIVE LOAD	A	15.0710	10.1620	0.0000
DEAD + LIVE LOAD	G	15.0710	10.1620	0.0000
DL + WL	A	-14.7960	-14.7650	0.0000
DL + WL	G	-12.2410	3.6380	0.0000
DL + LL + WL	A	-1.6920	-5.7160	0.0000
DL + LL + WL	G	0.8630	-5.4120	0.0000
DL + WLR	A	-5.5830	-1.0460	0.0000
DL + WLR	G	-8.1390	12.1730	0.0000
DL + LL + WLR	A	7.5210	8.0030	0.0000
DL + LL + WLR	G	4.9650	3.1240	0.0000
DL+UNB SNOW L	A	12.0760	7.1190	0.0000
DL+UNB SNOW L	G	9.2540	-7.1190	0.0000
DL+UNB SNOW R	A	12.0760	7.1190	0.0000
DL+UNB SNOW R	G	9.2540	-7.1190	0.0000
DL+WLR+UNB SNOW L	A	-6.6540	-9.8710	0.0000
DL+WLR+UNB SNOW L	G	-6.9210	-1.2570	0.0000
DL+WLR+UNB SNOW R	A	2.5590	3.8480	0.0000
DL+WLR+UNB SNOW R	G	-2.8190	7.2790	0.0000
DL+WLR+UNB SNOW R	A	-6.6540	-9.8710	0.0000
DL+WLR+UNB SNOW R	G	-6.9210	-1.2570	0.0000
DL+WLR+UNB SNOW R	A	2.5590	3.8480	0.0000
DL+WLR+UNB SNOW R	G	-2.8190	7.2790	0.0000
DL+SEISMIC L	A	1.2780	-0.3880	0.0000
DL+SEISMIC L	G	2.6560	-2.6120	0.0000
DL+SEISMIC R	A	2.6560	2.6120	0.0000
DL+SEISMIC R	G	1.2780	0.3880	0.0000

Main Frame Reactions at Line 6 (BLDG.B)

NOTE: All reactions are shown in Kips. A negative value, indicates opposite direction.

Condition	Grid	Ver	Hor	Mom
DEAD + LIVE LOAD	B	14.7030	8.3870	0.0000
DEAD + LIVE LOAD	F	14.7030	8.3870	0.0000
DL + WL	B	-11.6560	-10.2550	0.0000
DL + WL	F	-9.7520	1.9770	0.0000
DL + LL + WL	B	1.8120	-2.5050	0.0000
DL + LL + WL	F	3.7160	-5.7730	0.0000
DL + WLR	B	-4.6670	-0.4900	0.0000
DL + WLR	F	-6.5710	8.7680	0.0000
DL + LL + WLR	B	8.8010	7.2600	0.0000
DL + LL + WLR	F	6.8970	1.0180	0.0000
DL+UNB SNOW L	B	9.1330	4.5440	0.0000
DL+UNB SNOW L	F	6.9160	-4.5440	0.0000
DL+UNB SNOW R	B	9.1330	4.5440	0.0000
DL+UNB SNOW R	F	6.9160	-4.5440	0.0000
DL+WLR+UNB SNOW L	B	-4.9940	-6.9850	0.0000
DL+WLR+UNB SNOW L	F	-5.3070	-1.2930	0.0000
DL+WLR+UNB SNOW R	B	1.9950	2.7800	0.0000
DL+WLR+UNB SNOW R	F	-2.1260	5.4990	0.0000
DL+WLR+UNB SNOW R	B	-4.9940	-6.9850	0.0000
DL+WLR+UNB SNOW R	F	-5.3070	-1.2930	0.0000
DL+WLR+UNB SNOW R	B	1.9950	2.7800	0.0000
DL+WLR+UNB SNOW R	F	-2.1260	5.4990	0.0000
DL+SEISMIC L	B	0.7750	-0.3630	0.0000
DL+SEISMIC L	F	1.6950	-1.6370	0.0000
DL+SEISMIC R	B	1.6950	1.6370	0.0000
DL+SEISMIC R	F	0.7750	0.3630	0.0000

BASE PLATE DETAILS  
( ) - DENOTES METRIC



FIXED BASE COLUMN at LINES A & G  
FIXED BASE COLUMN at LINES B & F

REACTIONS

ENDWALL COLUMN REACTIONS at LINE 1

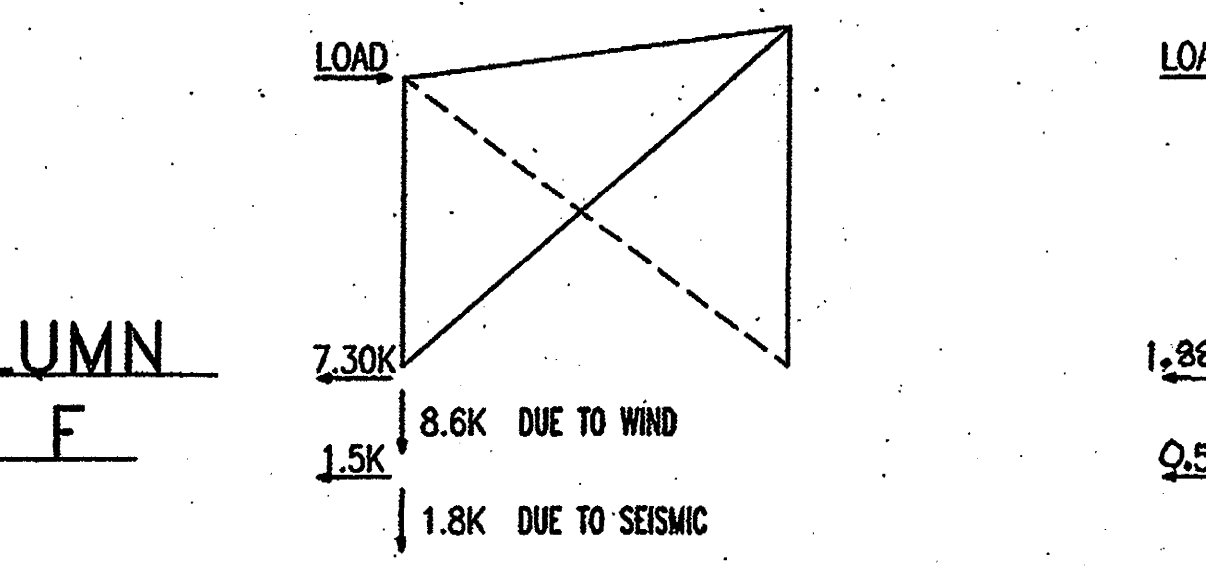
DL + LL + CL = ↑ 7.5 kips  
DL + WL = ↓ 11.3 kips  
→ WL = → 8.2 kips

ENDWALL COLUMN REACTIONS at LINE 5

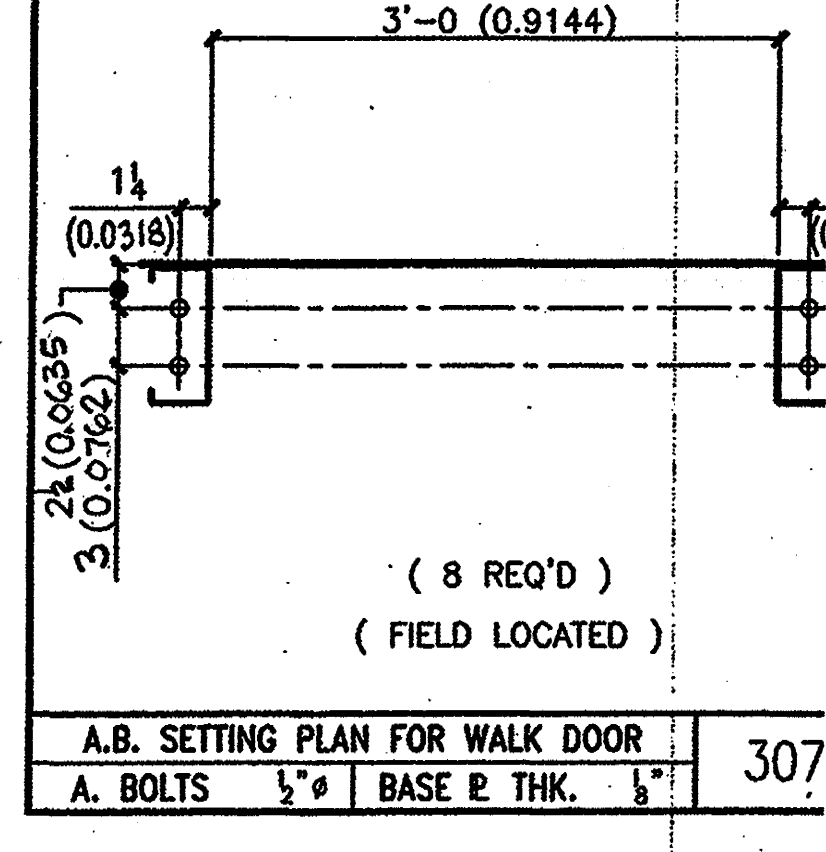
DL + LL + CL = ↑ 4.2 kips  
DL + WL = ↓ 6.0 kips  
→ WL = → 8.4 kips } @ INT. COLS ONLY

ENDWALL COLUMN REACTIONS at LINE 7

DL + LL + CL = ↑ 4.2 kips  
DL + WL = ↓ 6.0 kips  
→ WL = → 3.0 kips



ENDWALL BRACING REACTIONS at LINE 1 (BLDG. 'A')  
ENDWALL BRACING REACTIONS at LINE 5 (BLDG. 'B')



A.B. SETTING PLAN FOR WALK DOOR  
A. BOLTS 1/2" BASE P. THK. 1/4" 307

**DRAWING STATUS**

NO.	DATE	DESCRIPTION	BY	CK'D
X	10-30-01	FOR APPROVAL	BB	RES

**REVISIONS**

NO.	DATE	DESCRIPTION	BY	CK'D
A	10-30-01	FOR APPROVAL	BB	RES

**metallic building company**  
7301 FAIRVIEW • HOUSTON, TEXAS • P.O. BOX 40338  
ZIP 77041 (713) 466-7788 ZIP 77240

DESCRIPTION: BASE PLATE DETAILS AND REACTIONS  
SIZE: SEE BUILDING DESCRIPTION SHEET 'C1'  
CUSTOMER: SCAN-STEEL INTERNATIONAL  
LOCATION: ICELAND  
JOB NO.: 0105-197484  
PH: A  
BLDG. DESC.: A  
SHEET NO.: F2 of 2

NOTE: THE UNDERSIGNED IS NOT THE ENGINEER OF RECORD FOR THE OVERALL PROJECT.  
ISSUED APRIL 11, 2001  
APPROVED DATE: 06 NOV 2001  
Sambykkt bann  
Byggingafultráttinn í Hafnarfirði  
F.h. Sigurbjartur Halldórsson