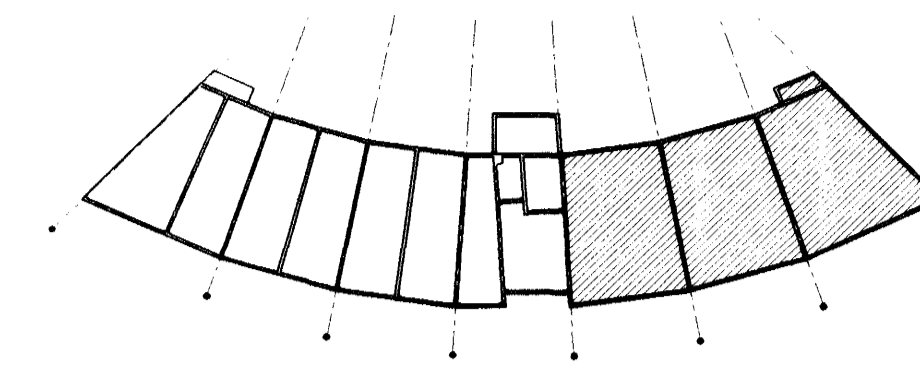


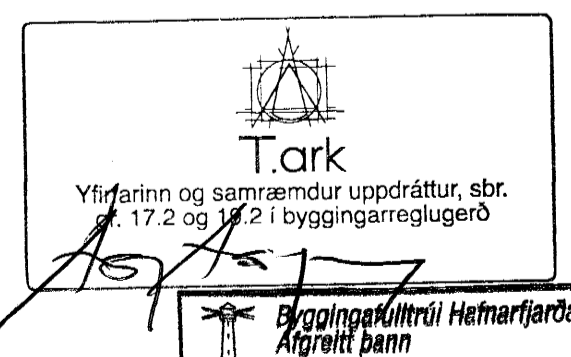
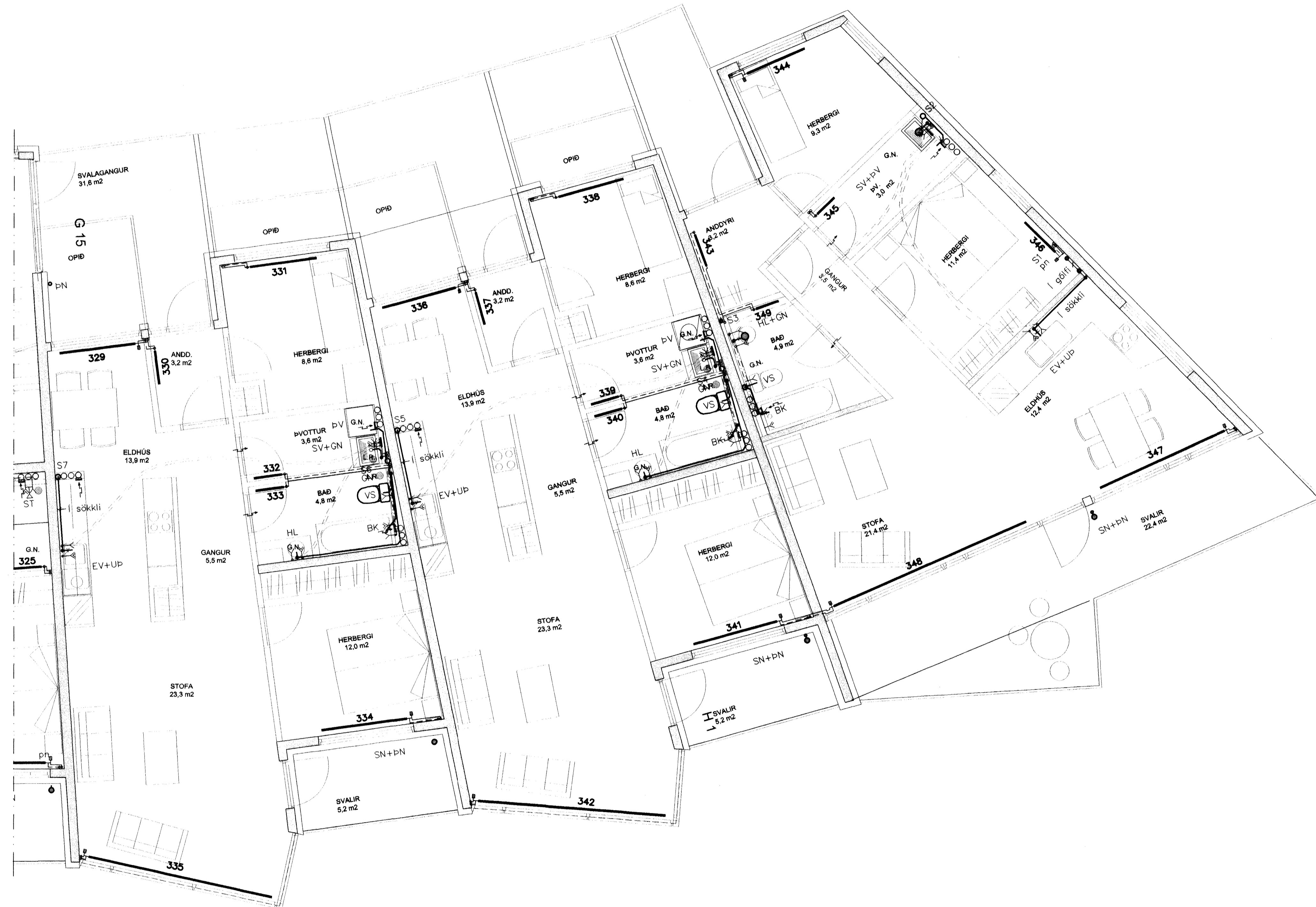
GRUNNMYND 3.hæð. 1:50



OFNASKRÁ

Önar skala vera vottádr af Rennsóknarstofnun Byggingferðadænis samkvæmt ÍST EN-442
Önar delta = 40°C Öfnatengi = 10mm Öfnioklar af gerðinni Heimeier delta ta 40°C

númer	rymi	vöð/klst	öfnategund	festing	stútar	öfniokli	stíll-	tala	flóid
301	0301 Herbergi	1080	P21-500/1200	Veggf.	A+B+C+D	Fexakt	3	1	
302	Anddyri	630	P21-500/700	Veggf.	A+B+C+D	RTL	-	1	
303	Baðherbergi	379	P11-500/600	Veggf.	A+B+C+D	RTL	-	1	
304	Stofa	2732	CP-21/4000	Gólf.	A+B	Fexakt	5	1	
306	Eldhús	2390	CP-21/3500	Gólf.	C+D	Fexakt	5	1	
306	Hjón	1093	P22-500/900	Veggf.	A+B+C+D	Fexakt	3	1	
307	Þvottur	379	P11-500/600	Veggf.	A+B+C+D	RTL	-	1	
308	0302 Eldhús	1093	CP-21/1600	Gólf.	C+D	Fexakt	3	1	
309	Anddyri	630	P21-500/700	Veggf.	A+B+C+D	RTL	-	1	
breytt 02.12.02	310 Herbergi	884	P11-800/1400	Veggf.	A+B+C+D	RTL	-	1	
311	Þvottur	379	P11-500/600	Veggf.	A+B+C+D	RTL	-	1	
312	Baðherbergi	379	P11-500/600	Veggf.	A+B+C+D	RTL	-	1	
313	Hjón	1137	P11-500/1800	Veggf.	A+B+C+D	Fexakt	3	1	
314	Stofa	2664	CP-21/3900	Gólf.	C+D	Fexakt	5	1	
315	0303 Eldhús	1093	CP-21/1600	Gólf.	C+D	Fexakt	3	1	
316	Anddyri	630	P21-500/700	Veggf.	A+B+C+D	RTL	-	1	
breytt 02.12.02	317 Herbergi	884	P11-800/1400	Veggf.	A+B+C+D	RTL	-	1	
318	Þvottur	379	P11-500/600	Veggf.	A+B+C+D	RTL	-	1	
319	Baðherbergi	379	P11-500/600	Veggf.	A+B+C+D	RTL	-	1	
320	Hjón	1137	P11-500/1800	Veggf.	A+B+C+D	Fexakt	3	1	
321	Stofa	2664	CP-21/3900	Gólf.	C+D	Fexakt	5	1	
322	0304 Anddyri	630	P21-500/700	Veggf.	A+B+C+D	RTL	-	1	
323	Eldhús	720	P21-500/800	Veggf.	A+B+C+D	RTL	-	1	
324	Þvottur	379	P11-500/600	Veggf.	A+B+C+D	RTL	-	1	
325	Baðherbergi	379	P11-500/600	Veggf.	A+B+C+D	RTL	-	1	
326	Hjón	1137	P11-500/1800	Veggf.	A+B+C+D	Fexakt	3	1	
327	Stofa	2664	CP-21/3900	Gólf.	C+D	Fexakt	5	1	
328	Stigahús	2243	P22-600/1600	Gólf.	C+D	Fexakt	5	1	
329	0305 Eldhús	1093	CP-21/1600	Gólf.	C+D	Fexakt	3	1	
330	Anddyri	630	P21-500/700	Veggf.	A+B+C+D	RTL	-	1	
breytt 02.12.02	331 Herbergi	884	P11-800/1400	Veggf.	A+B+C+D	RTL	-	1	
332	Þvottur	379	P11-500/600	Veggf.	A+B+C+D	RTL	-	1	
333	Baðherbergi	379	P11-500/600	Veggf.	A+B+C+D	RTL	-	1	
334	Hjón	1137	P11-500/1800	Veggf.	A+B+C+D	Fexakt	3	1	
335	Stofa	2664	CP-21/3900	Gólf.	C+D	Fexakt	5	1	
336	0306 Eldhús	1093	CP-21/1600	Gólf.	C+D	Fexakt	3	1	
337	Anddyri	630	P21-500/700	Veggf.	A+B+C+D	RTL	-	1	
breytt 02.12.02	338 Herbergi	884	P11-800/1400	Veggf.	A+B+C+D	RTL	-	1	
339	Þvottur	379	P11-500/600	Veggf.	A+B+C+D	RTL	-	1	
340	Baðherbergi	379	P11-500/600	Veggf.	A+B+C+D	RTL	-	1	
341	Hjón	1137	P11-500/1800	Veggf.	A+B+C+D	Fexakt	3	1	
342	Stofa	2664	CP-21/3900	Gólf.	C+D	Fexakt	5	1	
343	0307 Anddyri	630	P21-500/700	Veggf.	A+B+C+D	RTL	-	1	
344	Herbergi	1080	P21-500/1200	Veggf.	A+B+C+D	Fexakt	3	1	
345	Baðherbergi	379	P11-500/600	Veggf.	A+B+C+D	RTL	-	1	
346	Hjón	1093	P22-500/900	Veggf.	A+B+C+D	Fexakt	3	1	
347	Eldhús	1912	CP-21/2800	Gólf.	A+B	Fexakt	5	1	
348	Stofa	2937	CP-21/4300	Gólf.	C+D	Fexakt	5	1	
349	Baðherbergi	380	P21-500/400	Veggf.	A+B+C+D	RTL	-	1	
Samtals			Örkuflafi alla vöð/klst	53,890		Fjöldi öfna alls	49		
			Framrasaroklar	23		Bakrasaroklar	26		



* Öfn 348 tengdur inná stofnlögn fyrir 341

Breytingar	Nr.	Dags.	Nafn	25 JUNI 2003
	1	08.11.02	BS	
ERLUÁS 2 HAF.				VC
Verkfæðistofa Þráinn & Benedikt				
Laugavegi 178, 105 Rvk.				
Sími: 553 1770, 568 7775. Fax: 568-7701				
Netfang: post@islandia.is				
Lagnir inni				
				Nr. P304
				Dags. Sept 02
				080149-3609