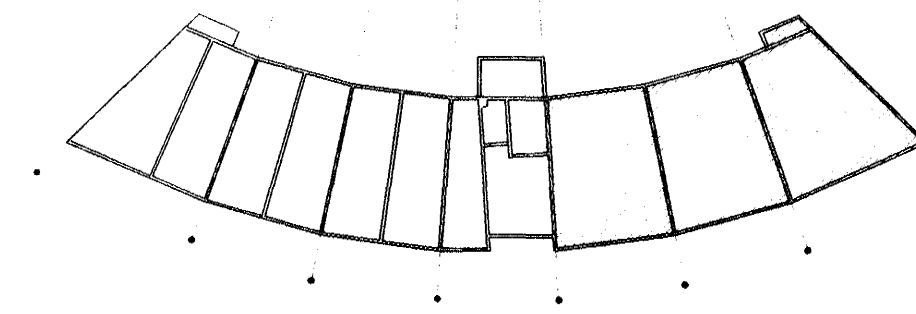


GRUNNMYND kjallara. 1:50



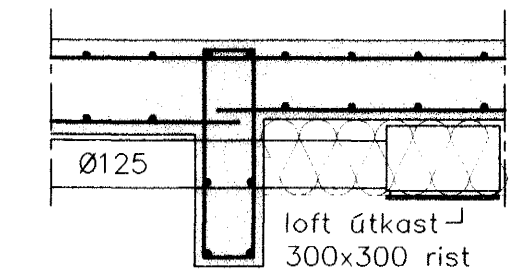
OFNASKRÁ

Önar skulu vera vottar af Rannsóknarstofnun Byggingaröndunarins samkvæmt ÍST EN-442
 Öflur dæla 1-40°C Öflubægi - 10mm Öflur átt að gerðinni Heimeir dæla to 40°C

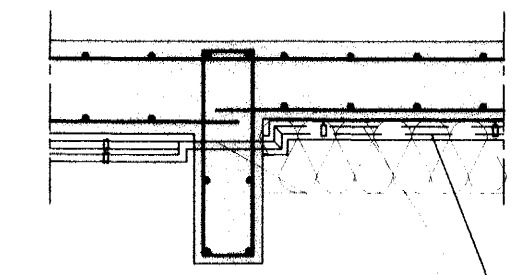
númer	rými	vöttikist	omategund	festing	stútur	ofnioki	tala	stíll	fjöldi
001	Bilskúr 0018	2243	P22-600/1600	Veggf.	A+B+C+D	RTL	-	-	1
002	Geymsla 0019	587	P11-600/800	Veggf.	A+B+C+D	RTL	-	-	1
003	Geymsla 0021	587	P11-600/800	Veggf.	A+B+C+D	RTL	-	-	1
004	Bilskúr 0020	1652	P21-600/1600	Veggf.	A+B+C+D	RTL	-	-	1
005	Bilskúr 0022	1652	P21-600/1600	Veggf.	A+B+C+D	RTL	-	-	1
006	Geymsla 0023	616	P21-600/800	Veggf.	A+B+C+D	RTL	-	-	1
007	Geymsla 0025	616	P21-600/800	Veggf.	A+B+C+D	RTL	-	-	1
008	Bilskúr 0024	1652	P21-600/1600	Veggf.	A+B+C+D	RTL	-	-	1
009	Bilskúr 0026	1652	P21-600/1600	Veggf.	A+B+C+D	RTL	-	-	1
010	Geymsla 0027	616	P21-600/800	Veggf.	A+B+C+D	RTL	-	-	1
011	Geymsla 0029	616	P21-600/800	Veggf.	A+B+C+D	RTL	-	-	1
012	Bilskúr 0028	1652	P21-600/1600	Veggf.	A+B+C+D	RTL	-	-	1
013	Stigahús	1136	P21-600/1100	Veggf.	A+B+C+D	RTL	-	-	1
014	Anddyri	1027	P11-600/1400	Veggf.	A+B+C+D	RTL	-	-	1
015	Hjólageymsla	1652	P21-600/1600	Veggf.	A+B+C+D	RTL	-	-	1
016	Hjólageymsla	1652	P21-600/1600	Veggf.	A+B+C+D	RTL	-	-	1
017	Geymsla	252	P11-500/400	Veggf.	A+B+C+D	RTL	-	-	1
018	Geymsla	252	P11-500/400	Veggf.	A+B+C+D	RTL	-	-	1
019	Geymsla	252	P11-500/400	Veggf.	A+B+C+D	RTL	-	-	1
020	Geymsla	252	P11-500/400	Veggf.	A+B+C+D	RTL	-	-	1
021	Geymsla	252	P11-500/400	Veggf.	A+B+C+D	RTL	-	-	1
022	Gangur	1282	P22-600/900	Veggf.	A+B+C+D	RTL	-	-	1
023	Bilskúr 0014	1652	P21-600/1600	Veggf.	A+B+C+D	RTL	-	-	1
024	Geymsla 0015	587	P11-600/800	Veggf.	A+B+C+D	RTL	-	-	1
025	Geymsla 0016	587	P11-600/800	Veggf.	A+B+C+D	RTL	-	-	1
026	Bilskúr 0018	2243	P22-600/1600	Veggf.	A+B+C+D	RTL	-	-	1
Samtals		Orkuþjafi alls vöttikist	27.199		Fjöldi ofna alls	25			
		Framrásarokar	0		Bakrásarokar	25			

Öfn felltur úr 29.04.03

Loftfresi-útkastr 1:20
Sneiðing A



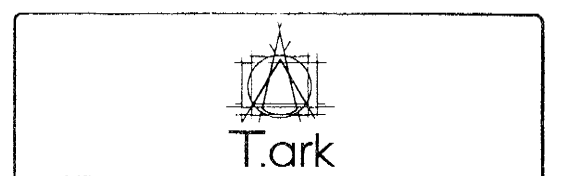
Stoflagnr hita 1:20
Sneiðing B



Lagnir eru hlið við hlið og fast við loft

Ótlagnir einangrist með Glerullar/steinullarhólkum og veftist með stölpappu

L-77,40



2* Reyndartekning = öfn 022 felltur út, stoflagnr fyrir snjóbræðu bati
 2* Öfnar í hjólageymslu ferðir á útvegg
 1* Breyting á stofniögnun fyrir stofur - bati inni snjó.

Breytingar	ERLUÁS 2 HAF.	25 JUNI 2003
Nr.	Dags. Nafn	VG
1	08.11.02 BS	Verkfræðistofa Þráinn & Benedikt
2	19.02.03 BS	Laugavegi 178, 105 Rík. Sími: 553 1770, 568 7775, Fax: 568-7701
3	20.06.03 BU	Netfang: post@islandia.is
	Lagnir innanhúss	Dags. Sept 02
		080149-3609