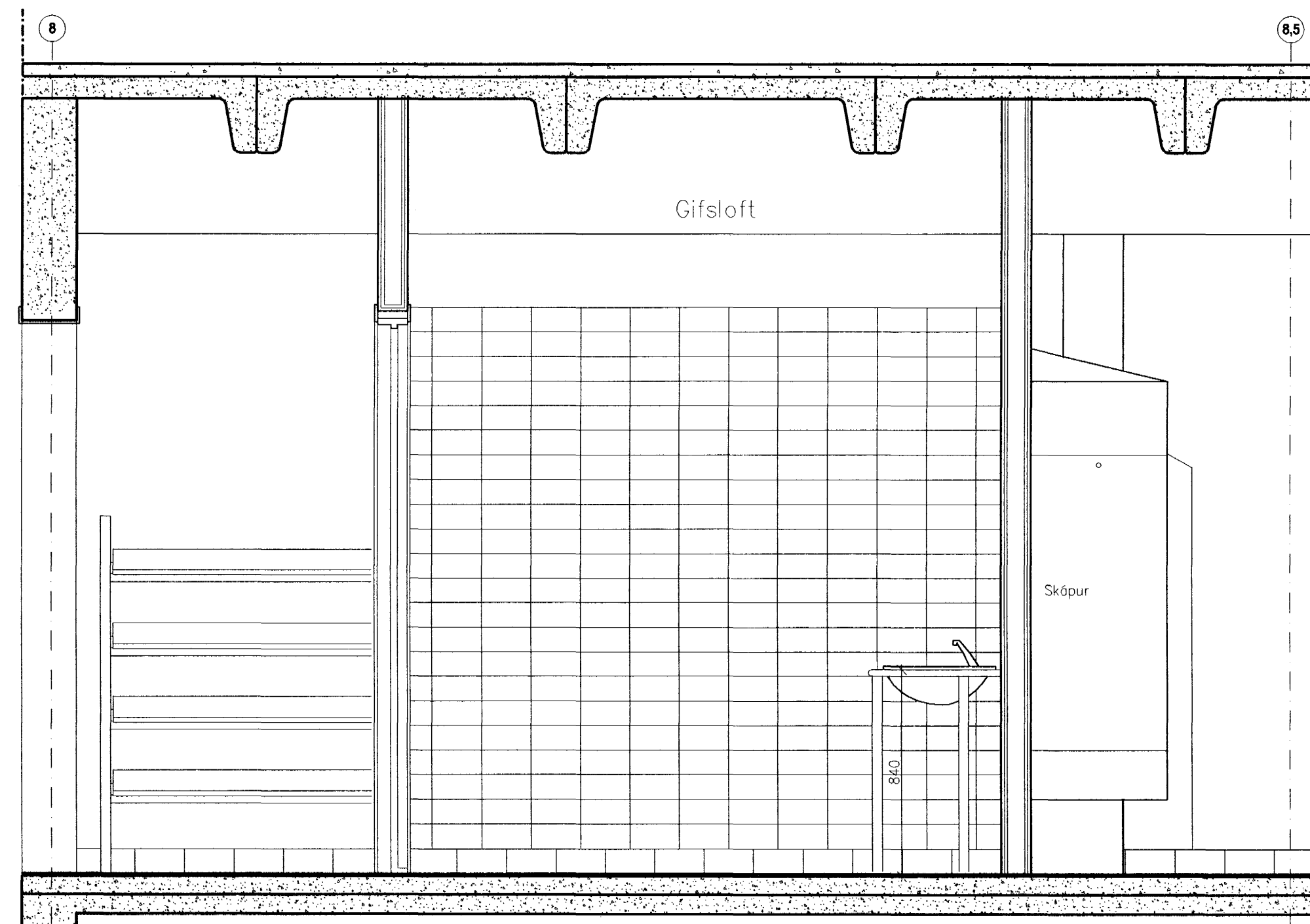
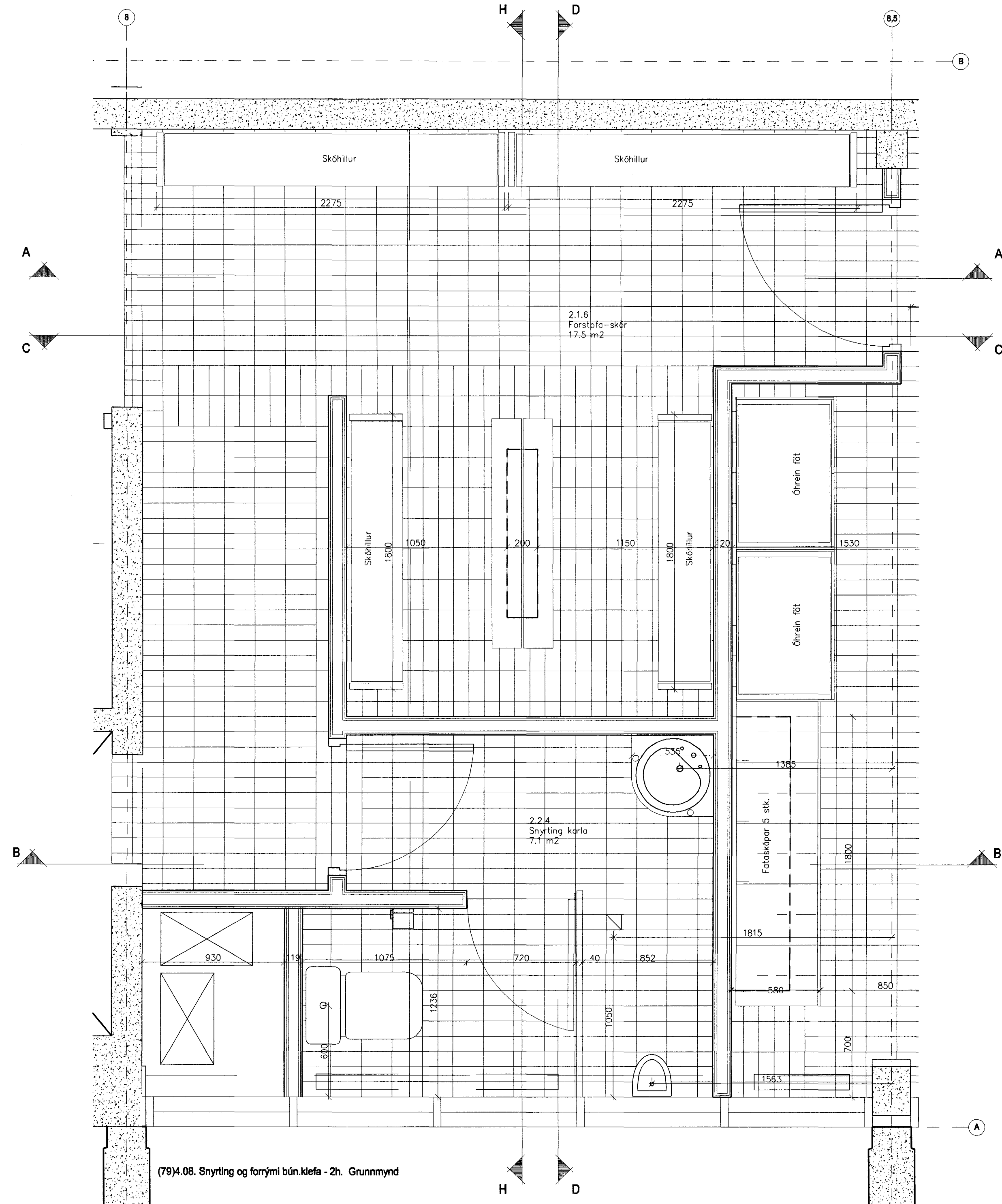


(79)4.08. Snyrting og forrými bæn.klefa - 2h. Sneiðing A-A

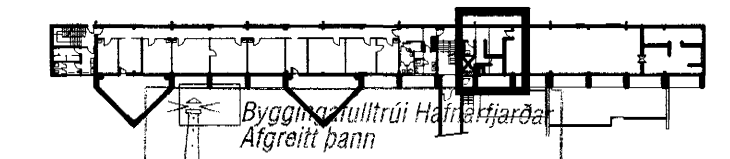


(79)4.08. Snyrting og forrými bæn.klefa - 2h. Sneiðing B-B



(79)4.08. Snyrting og forrými bæn.klefa - 2h. Grunnmynd

ÖLL MÁL OG AÐSTÆTUR SKOBIST Á STADNUM FYRIR SMÍÐ.
Ei ásetningu er á milli málsetninga á teikningum og
raunverðum á verkstöð skal þó söfameðna standa.



Skýringar:
Explanations:

ARK ÍS ehf
arkitektar ráðgjafar

Aðalsteinn Snorrason arkitekt f.él. 1611611-4769
Egill Guðmundsson 270152-6869
Gísli Gíslason arkitekt f.él. 160657-4809
klapparstig 16 101 Reykjavík
sími 511 2060
fax 511 2066
netfang arkis@ark.is

Breyt. Rev.	Breyting Revision	Dags. Date	Samþ. Approved	Nölk. heiml. Released

Tilvit. teikningar nr. ISAL Ref. drawing no. of ISAL

Samsetn. teikningar nr. ISAL Assembly drawing no. of ISAL

This drawing is the property of the ICELANDIC ALUMINIUM CO. LTD. and handed out for personal use only. It may neither be copied nor made available to others without permission of the ICELANDIC ALUMINIUM CO. LTD. The receiver is liable for any misuse.

Fjöldi stúka / Number of pieces	Hlutur / Object	eo. stlk. / Weight	Ítal. í heild / Total in total	Alhússæmdir / Remarks
IV III II I	Steypuskáli ANNEX Mhl.10 styrkingar / stækur Snyrting og forrými bæn.klefa - 2h.	2	2	Málvarði Scale 1: 20 Stærð frumtekn. Formst. of org. A1 CÓna - Eq. type - Eq. no. 6010 BA 1227

Veiknir / Supplier: ARKIS ehf (79)4.08

Teknað AS MS JG KE 29 11.02 Yfirfarið Checked AS
ALCAN PRIMARY METAL GROUP ISAL Straumeyri IS-222 Hafnarfjörður

166202