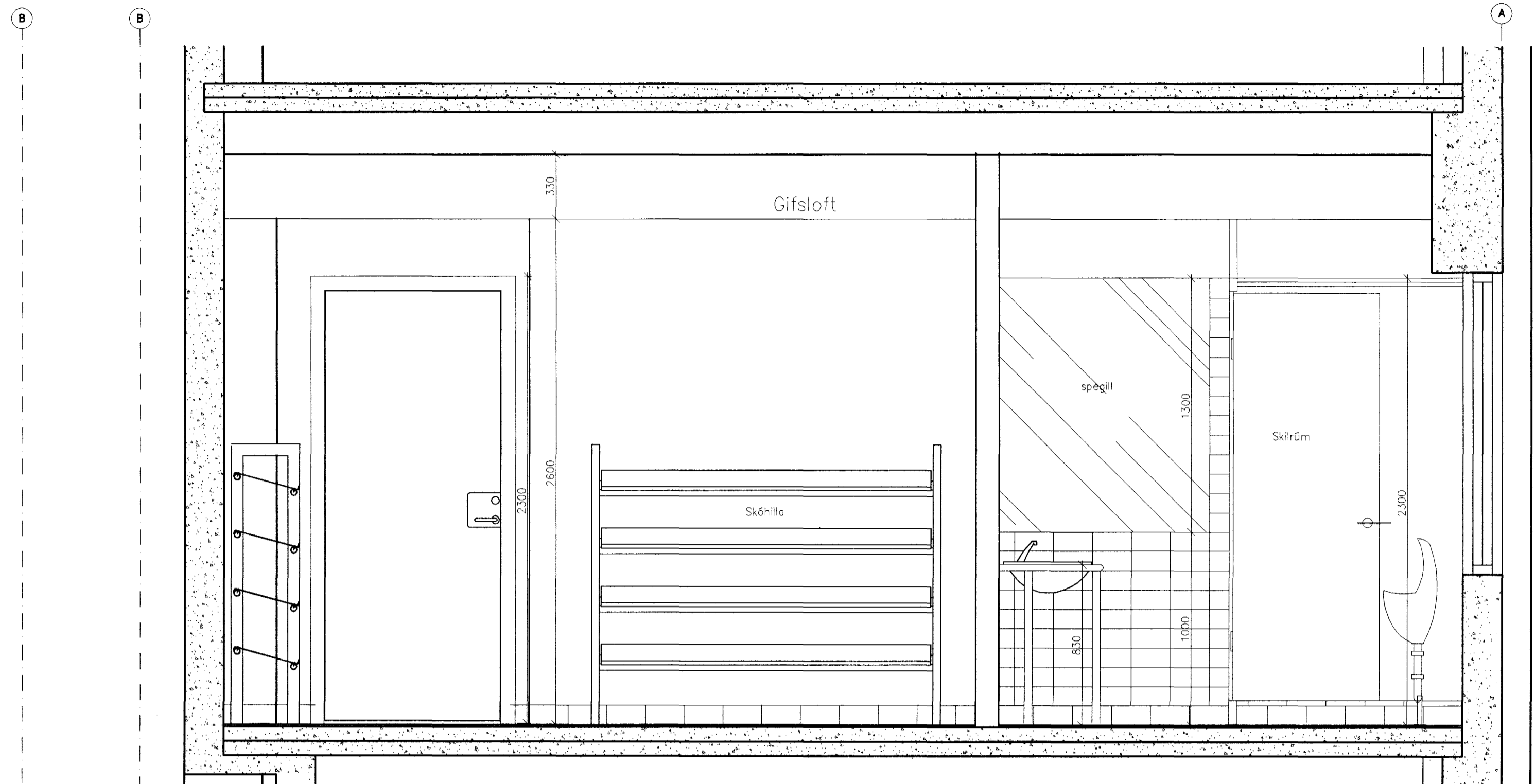
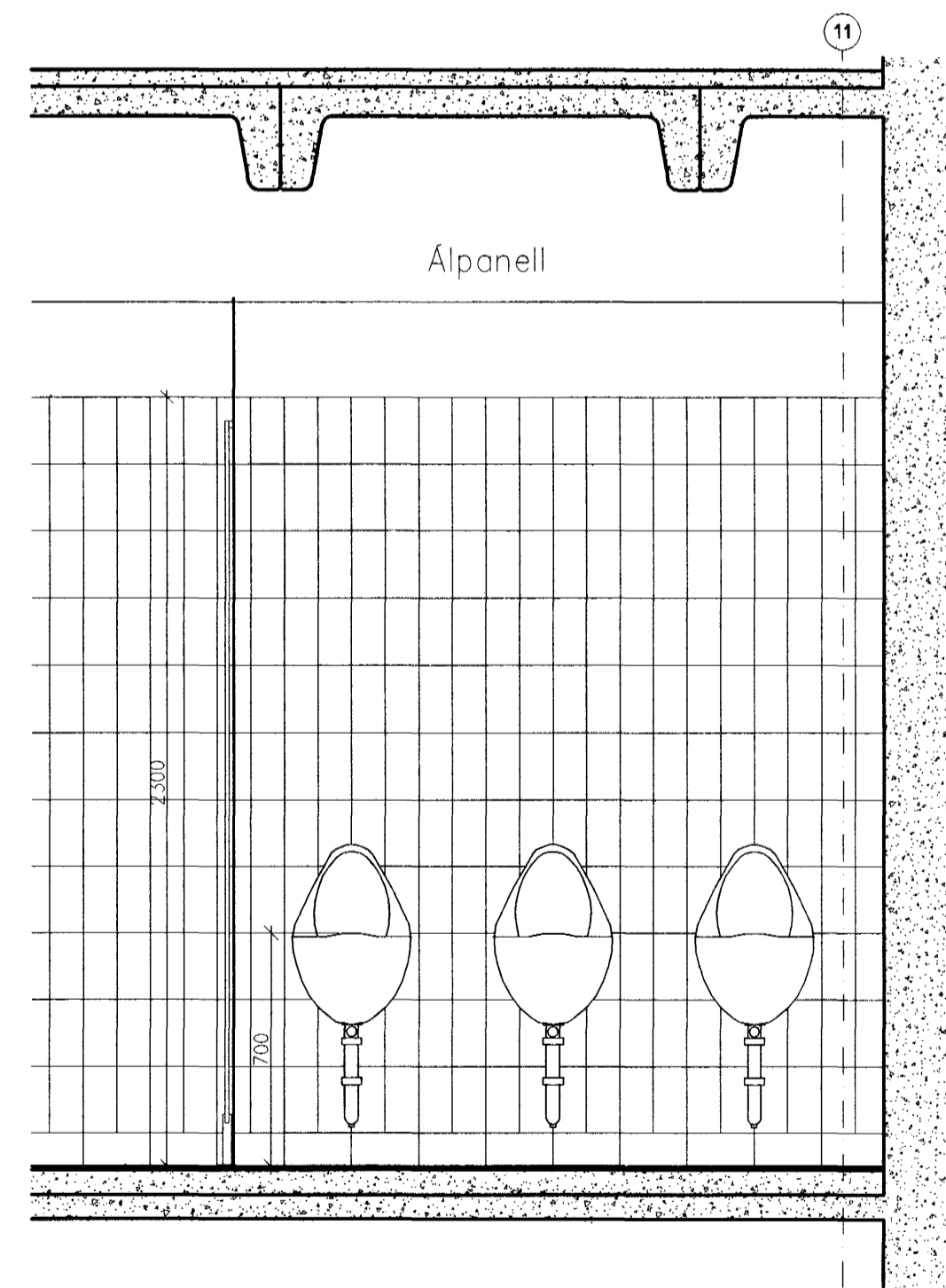


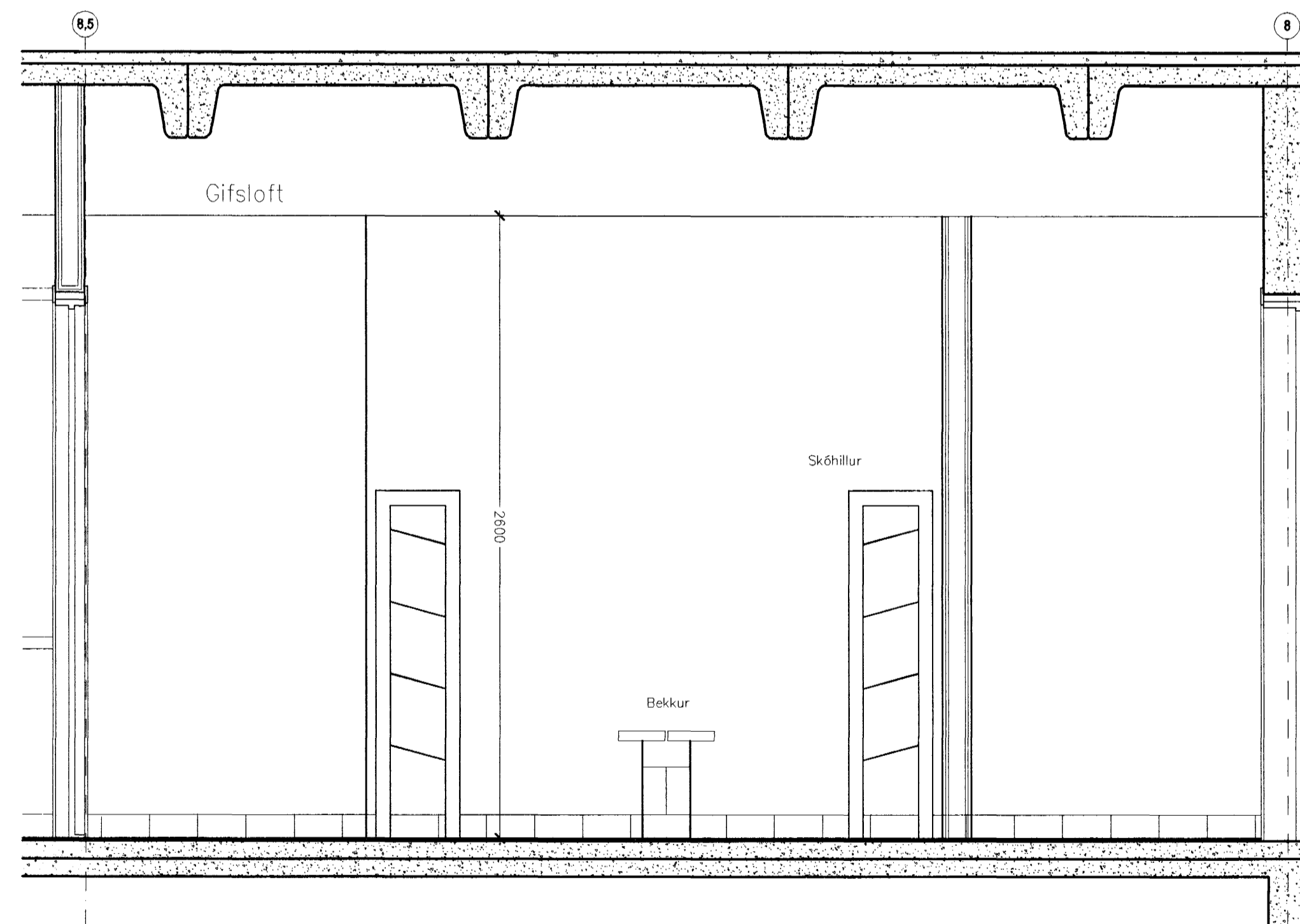
(79)4.08. Snyrting og forrými bún.klefa - 2h. Sneiðing H-H



(79)4.08. Snyrting og forrými bún.klefa - 2h. Sneiðing D-D

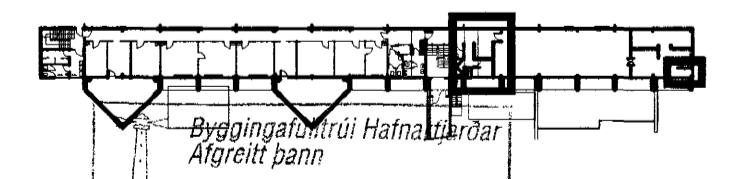


(79)4.08. Snyrting baðsvæði. Sneiðing G-G



(79)4.08. Gangur v. lyftu og forrými bún.klefa - 2h. Sneiðing C-C

ÖLL MÁL OG ABSTÆBUR SKOBIST Á STAÐNUM FYRIR SMÍÐ.
Ei ósamræmi er á milli málsetninga á teikningum og
raunstarðum á verkstöð skul þóð síðarmethá standi.



Skýringar:
Explanations:

ARK IS ehf
arkitektar ráðgjafar
Aðalsteinn Snorrason arkitekt fof 2779
Egill Guðmundsson arkitekt fof 2769
Gísli Gíslason arkitekt fof 160657-4809
klapparstíg 16 101 Reykjavík
sími 511 2060
fax 511 2066
netfang arkis@ark.is

Breyt./ Rev.	Breyting/ Revision	Dags./ Date	Samþ./ Approved	Nálg./ Released
Tilv. teikningar nr. ISAL Ref-drawing no. of ISAL	Samsættn. teikningar nr. ISAL Assembly drawing no. of ISAL			

This drawing is the property of the ICELANDIC ALUMINIUM CO. LTD. and handed out for personal use only. It may neither be copied nor made available to others without permission of the ICELANDIC ALUMINIUM CO. LTD. The receiver is liable for any misuse.

Fjöldi stúkkja Number of pieces	Hlutur Object	22	22	Efni/ Material	Al	Ítalgi/ Weight (kg)	Ítalgi/ Weight (kg)	Ítalgi/ Weight (kg)	Athugasemdir Remarks
IV	III	II	I						Malkvarði Scale
									1: 20
									Stærð frumteikn. Format of orig. A1
									CCO - Eq. Type - Eq. no. 6010 BA 1227
Væðing / Supplier		ARKIS ehf		Drögn. af sýni / Tekinn. vörðug. / Drawn. of sample / Checked and released		(79)4.09			
Teiknað / Drawn		AS MS JG KE 29.11.02		Yfirfarið / Checked		AS		Samþykkt / Approved	
ALCAN PRIMARY METAL GROUP		IS-222 Hafnarfordur		ALCAN		166203			
Teiknað / Drawn		Yfirfarið og skráð / Checked and filed		Nálgun heimilub / Released					