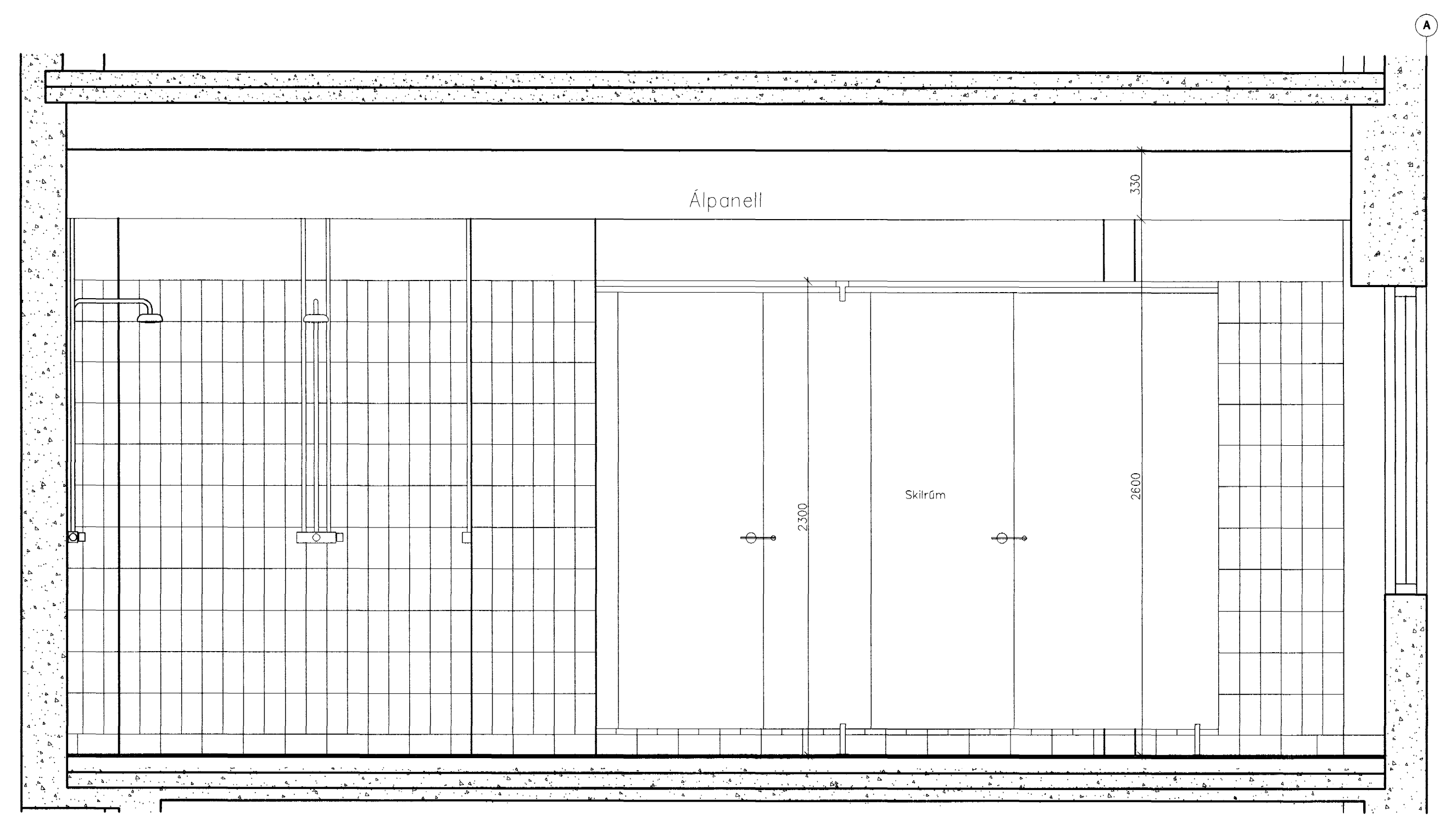
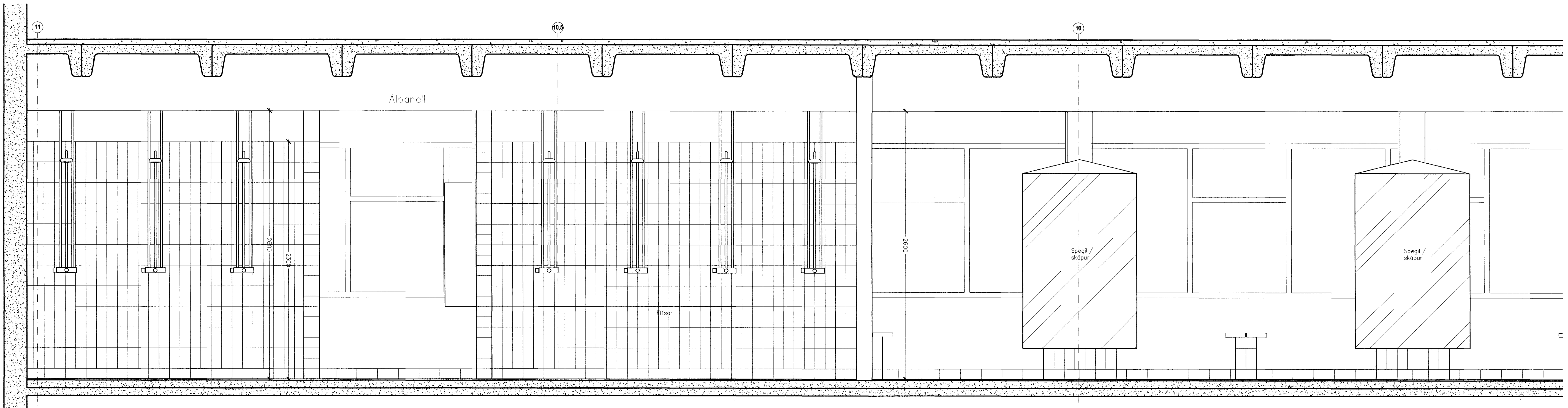


(79)4.11. Búningsklefi (partur), þvottasvæði og snyrtingar - 2h. Sneiðing E-E

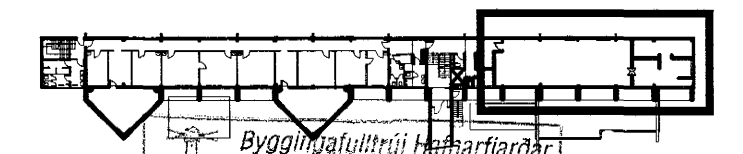


(79)4.11. Búningsklefi (partur), þvottasvæði og snyrtingar - 2h. Sneiðing F-F



(79)4.11. Búningsklefi (partur), þvottasvæði og snyrtingar - 2h. Sneiðing C-C

ÖLL MÁL OG ABSTÆUR SKOÐAST Á STAÐNUM FYRIR SMÍÐ.
Ei ásamræmi er á milli málsetninga á teikningum og
runstærnum á verkstöð skil það stöðmeðna standa.



Skýringar:
Explanations:

ARK IS ehf
arkitektar ráðgjafar
Aðalsteinn Snorrason arkitekt fof 270152-8869
Egill Guðmundsson arkitekt fof 160657-4809
Gísli Gíslason arkitekt fof 160657-4809
klapparstíg 16 101 Reykjavík
sími 511 2060
fax 511 2066
netfang arkis@ark.is

Breyt. Rev.	Breyting Revision	Dags. Date	Samþ. Approved	Helk. heiml. Released
Tilv. teikningar nr. ISAL Ref. drawing no. of ISAL		Samsetn. teikningar nr. ISAL Assembly drawing no. of ISAL		

This drawing is the property of the ICELANDIC ALUMINIUM CO. LTD. and handed out for personal use only. It may neither be copied nor made available to others without permission of the ICELANDIC ALUMINIUM CO. LTD. The receiver is liable for any misuse.		Fjöldi stykja / Number of pieces: 4	Hlutur / Object: Steypuskáli	sg. stlk. / Weight (kg): 200	Ítalaf. heild / Total area: 1:20	Althugsamendir / Remarks: Melkivandi / Scale: A1
ANNEX Mhl.10 styrkingar / stækun Búningsklefi (partur), Þv.svæði og snyrt. Sneiðingar		Stærð / Dimension: 6010 BA 1227	Verktaki / Supplier: ARKIS ehf	Drögn. af teikn. / Drawn by: (79)4.13	Stærð / Dimension: 6010 BA 1227	Stærð / Dimension: 6010 BA 1227
Teknað / Drawn: AS MS JG KE 29.11.02	Yfirfarið / Checked: AS	Samþykkt / Approved: AS	Drögn. af ISAL / Drawn by ISAL: (79)4.13	Drögn. af ISAL / Drawn by ISAL: (79)4.13	Drögn. af ISAL / Drawn by ISAL: (79)4.13	Drögn. af ISAL / Drawn by ISAL: (79)4.13
ALCAN PRIMARY METAL GROUP ISAL Alcan Iceland Ltd		Staðsmark / IS-222 Hafnarforður	ALCAN	166207		